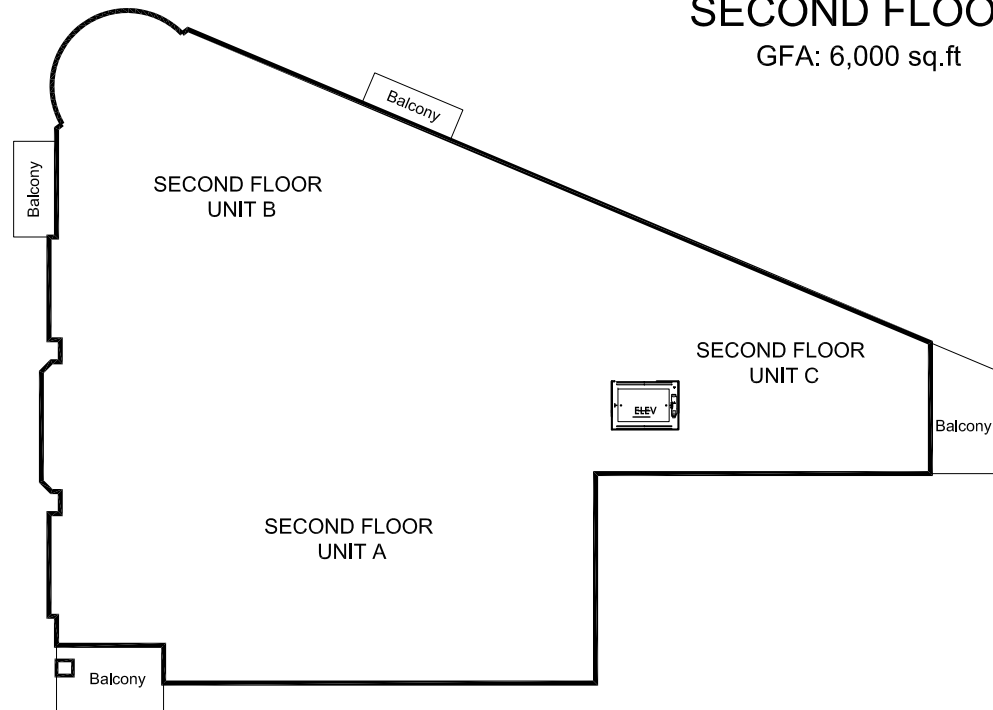


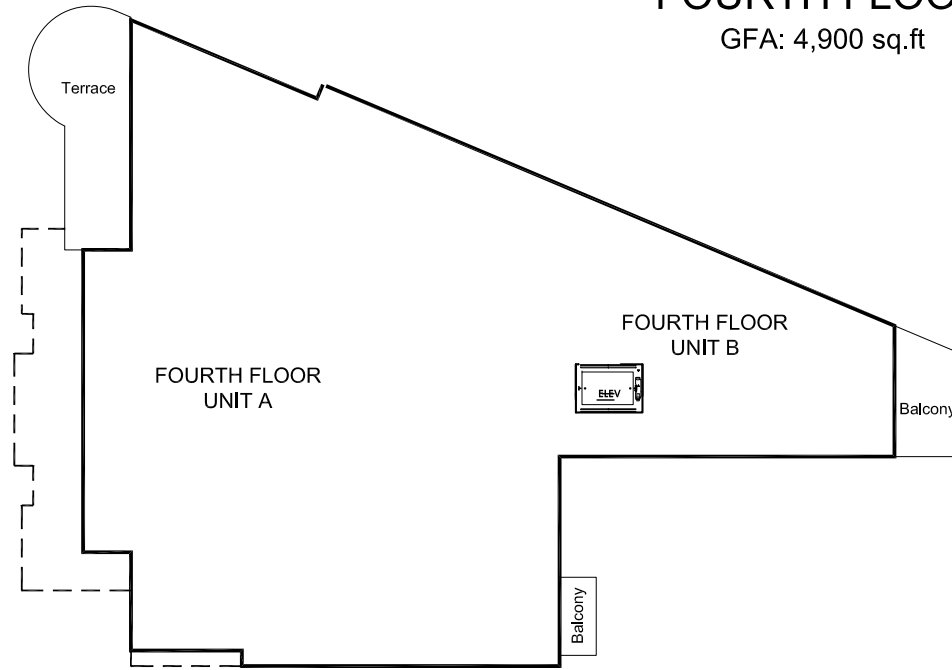
SECOND FLOOR

GFA: 6,000 sq.ft



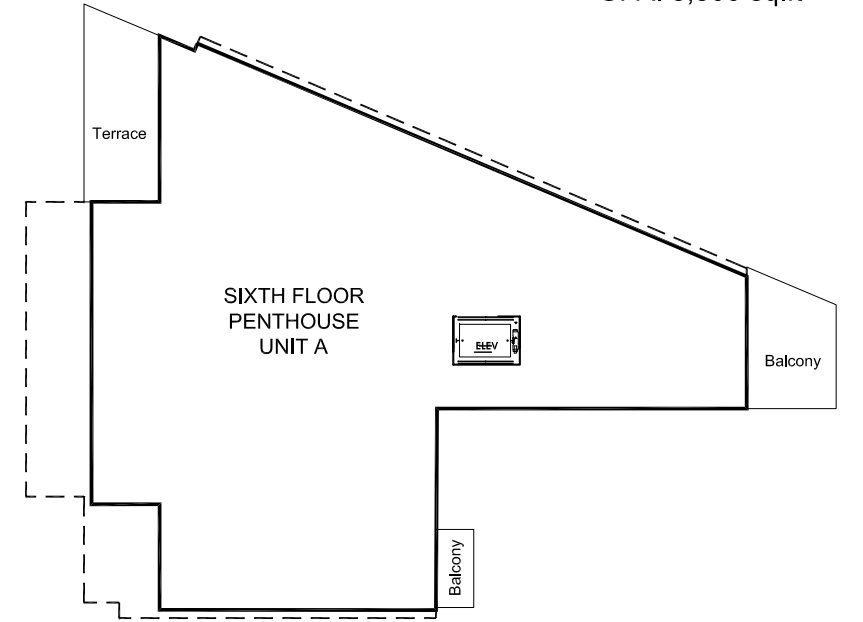
FOURTH FLOOR

GFA: 4,900 sq.ft



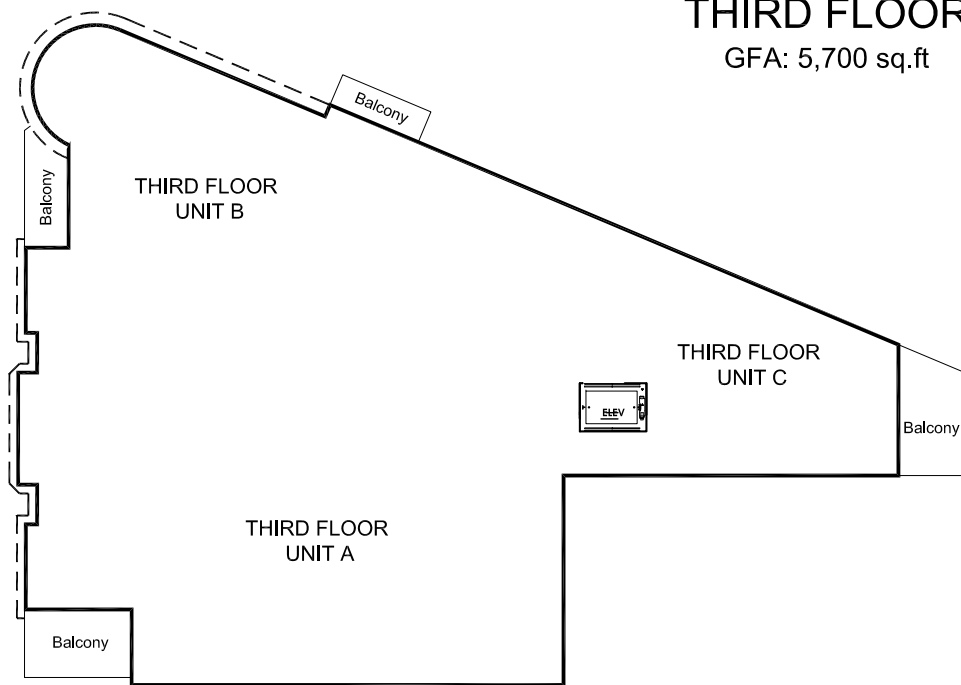
SIXTH FLOOR

GFA: 3,300 sq.ft



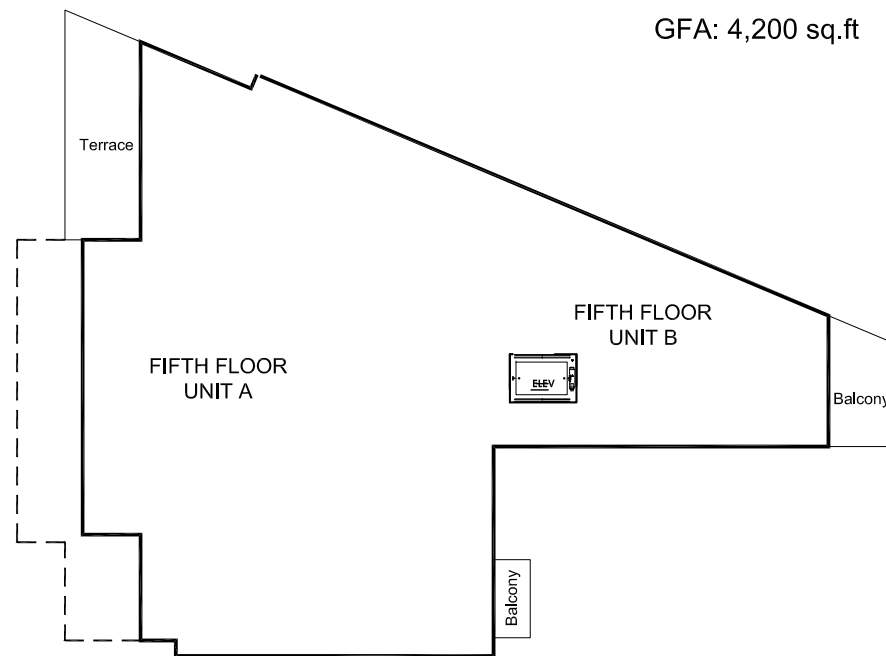
THIRD FLOOR

GFA: 5,700 sq.ft



FIFTH FLOOR

GFA: 4,200 sq.ft



STATS:

TOWNHOUSES:

AYLMER AVE.:	4
TOTAL:	4

CONDO UNITS:

GALT ST.:	
GROUND:	3
SECOND:	3
THIRD:	3
FOURTH:	2
FIFTH:	2
SIXTH:	1
TOTAL:	14
TOTAL UNITS	18

