



















1. **Preserve the church** and its landscaped approach as a community resource and gateway.



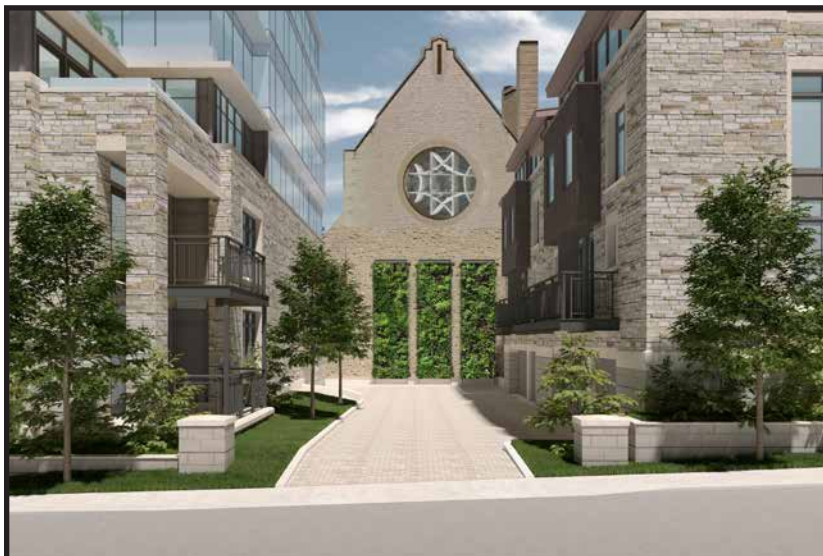
4. **Maintain the existing sense of scale on Galt** by establishing a masonry base of similar mass to the existing church education wing.



2. **Reintroduce the traditional Old Ottawa South streetscape** with parallel parking, street trees and landscaping and a residential architectural rhythm.



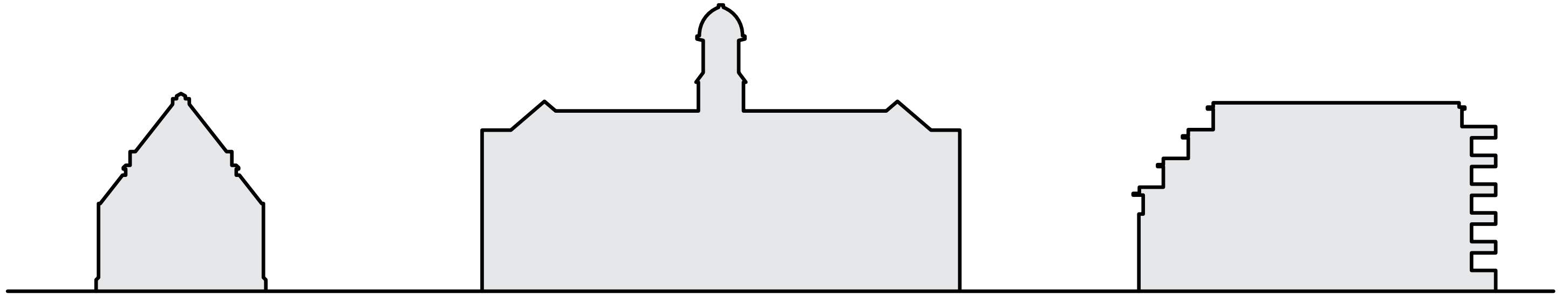
5. Use a **stepped approach** to the building mass above the building base to break up mass and preserve scale.



3. **Preserve views of the church** from all abutting streets



6. **Clad the base building with stone and precast concrete accents** to reflect the church and library gateway buildings.



Southminster United Church

15 Aylmer Avenue

Royal College of Physicians and Surgeons

774 Echo Drive

Proposed 6-Storey Building

7 Galt Street



