

I REQUIRE THIS PLAN TO BE DEPOSITED UNDER THE LAND TITLES ACT.  
 DATE: \_\_\_\_\_

**PLAN 4R-**  
 RECEIVED AND DEPOSITED  
 DATE: \_\_\_\_\_

REPRESENTATIVE FOR THE LAND REGISTRAR LAND TITLES DIVISION OF OTTAWA-CARLETON NO. 4.

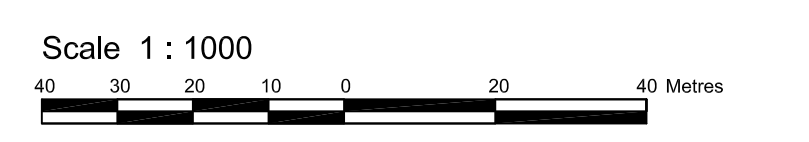
GORDON A. RAY  
 ONTARIO LAND SURVEYOR

SCHEDULE			
PART	LOT	CONCESSION	PIN
1			
2	PART OF 5	11	PART OF 04323-0084
3			
4			

Part 3 is subject to easement per Inst. OS21392

**PLAN OF SURVEY OF**  
**PART OF LOT 5**  
**CONCESSION 11**  
**(Geographic Township of Osgoode)**  
**CITY OF OTTAWA**

Surveyed by Annis, O'Sullivan, Vollebek Ltd.



**Metric**  
 DISTANCES AND COORDINATES SHOWN ON THIS PLAN ARE IN METRES AND CAN BE CONVERTED TO FEET BY DIVIDING BY 0.3048.

**Surveyor's Certificate**  
 I CERTIFY THAT:  
 1. This survey and plan are correct and in accordance with the Surveys Act, the Surveyors Act, the Land Titles Act and the regulations made under them.  
 2. The survey was completed on April 19, 2017.

Date: \_\_\_\_\_  
 Gordon A. Ray  
 Ontario Land Surveyor

**Notes & Legend**

□	Denotes	Survey Monument Planted
■		Survey Monument Found
SIB		Standard Iron Bar
SSIB		Short Standard Iron Bar
IB		Iron Bar
(WIT)		Witness
(AOC)		Annis, O'Sullivan, Vollebek Ltd.
Meas.		Measured
(P1)		Plan 4R-29160
(P2)		Plan 5R-9298
(O1)		Inst. OS21392
CL		Centreline
P&W		Post & Wire
Ø		Round

Distances shown on this plan are ground distances and can be converted to grid distances by multiplying by the combined scale factor of 0.99995.

Bearings are MTM grid, derived from specified control monuments 01019800604, 01019800626 and 01919740553, MTM Zone 9, NAD-83 (Original), Monument 1 - 01019800604 Northing 5020100.932 Easting 403411.048 Monument 2 - 01019800626 Northing 5020560.223 Easting 415315.091 Monument 3 - 01919740553 Northing 5012522.112 Easting 393256.224

Coordinate values are to urban accuracy in accordance with O. Reg. 216/10.

Bearings are referred to the line between Points A and B shown hereon to have a derived grid bearing of N 59° 19' 10" E.

Point A Northing 5019935.79 Easting 388151.91  
 Point B Northing 5020306.68 Easting 389782.09

Caution: Coordinates cannot, in themselves, be used to re-establish corners or boundaries shown on this plan.

