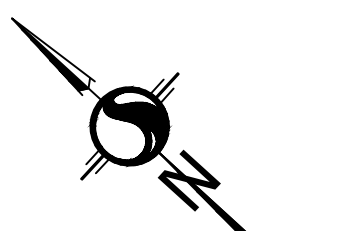
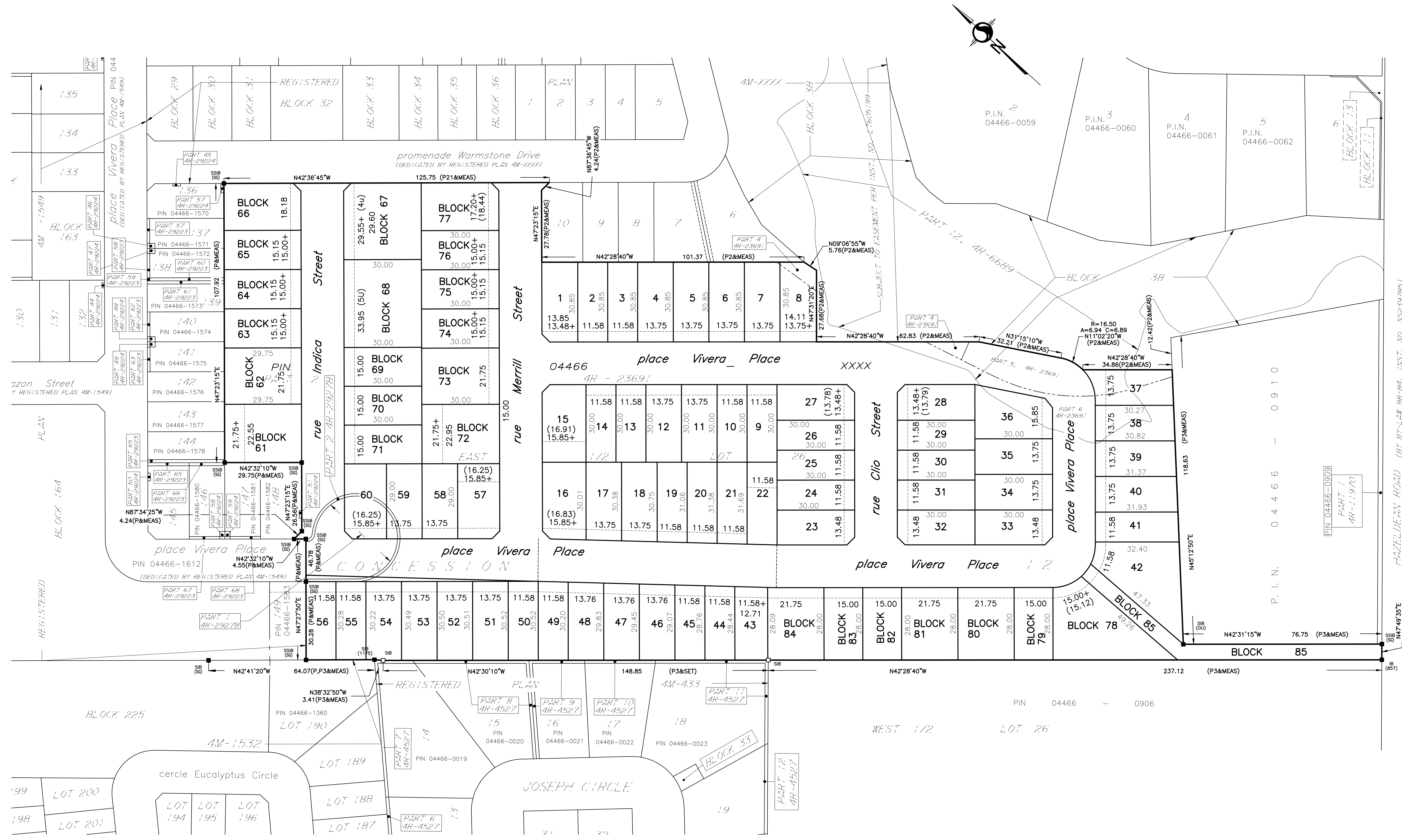
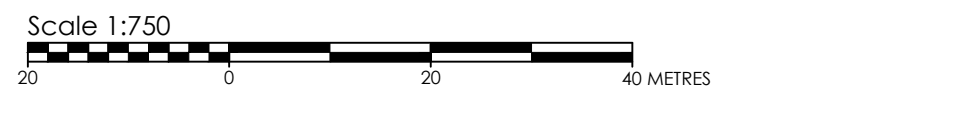


APPROVED UNDER SECTION 51 OF THE PLANNING ACT BY THE CITY OF OTTAWA THIS ____ DAY OF ____ 2017

PLAN 4M- I HEREBY CERTIFY THAT THIS PLAN 4M-____ IS REGISTERED IN THE LAND REGISTRY OFFICE FOR THE LAND TITLES DIVISION OF OTTAWA-CARLETON (No.4) AT ____ O'CLOCK ON THE ____ DAY OF ____ 2017 AND ENTERED IN THE REGISTER FOR P.I.N. ____ AND THE REQUIRED CONSENTS ARE REGISTERED AS PLAN DOCUMENT NUMBER OC-____ REPRESENTATIVE FOR LAND REGISTRAR



THIS PLAN COMPRISES PLAN OF SUBDIVISION of PART OF LOT 26 CONCESSION 12 (GEOGRAPHIC TOWNSHIP OF GOULBOURN) CITY OF OTTAWA



METRIC CONVERSION DISTANCES AND COORDINATES SHOWN ON THIS PLAN ARE IN METRES AND CAN BE CONVERTED TO FEET BY DIVIDING BY 0.3048

GRID SCALE CONVERSION DISTANCES ARE GROUND AND CAN BE CONVERTED TO GRID BY MULTIPLYING BY THE COMBINED SCALE FACTOR OF 0.999915.

BEARING NOTE BEARINGS HEREON ARE GRID BEARINGS DERIVED FROM THE CAN-NET VRS NETWORK AND ARE REFERRED TO THE CENTRAL MERIDIAN 76° 30' WEST LONGITUDE OF THE 3° MTM ONTARIO COORDINATE SYSTEM, NAD83 (ORIGINAL) ZONE 9.

Table with 3 columns: ORP ID, NORTHING, EASTING. Contains observed reference points derived from GPS observations.

LEGEND table listing symbols for DENOTES (IB, IB#, SIB, SIB#, CC, CP, WIT, PIN, MEAS, PROP, OU, SC, ORP, P, P3) and FOUND MONUMENTS (SET MONUMENTS, IRON BAR, ROUND IRON BAR, etc.).

OWNER'S CERTIFICATE THIS IS TO CERTIFY THAT: 1. LOTS 1 TO 60, BOTH INCLUSIVE, BLOCKS 61 TO 85, BOTH INCLUSIVE AND THE STREETS, NAMELY rue Indica Street, place Vivera Place, rue Merrill Street AND rue Clito Street, HAVE BEEN LAID OUT IN ACCORDANCE WITH OUR INSTRUCTIONS. 2. THE STREETS ARE DEDICATED AS PUBLIC HIGHWAYS.

Signature lines for Chris Taggart, Vice-President and R. Douglas Lazer, Vice-President, with their respective roles and dates.

SURVEYOR'S CERTIFICATE I CERTIFY THAT: 1. THIS SURVEY AND PLAN ARE CORRECT AND IN ACCORDANCE WITH THE SURVEYS ACT, THE SURVEYORS ACT AND THE LAND TITLES ACT AND THE REGULATIONS MADE UNDER THEM. 2. THE SURVEY WAS COMPLETED ON THE ____ DAY OF ____, 2017.

DATE and signature line for Brian J. Webster, Ontario Land Surveyor.

Stantec Geomatics Ltd. logo and contact information: CANADA LANDS SURVEYORS, ONTARIO LAND SURVEYORS, 1331 CLYDE AVENUE, SUITE 400, OTTAWA, ONTARIO, K2C 3G4.