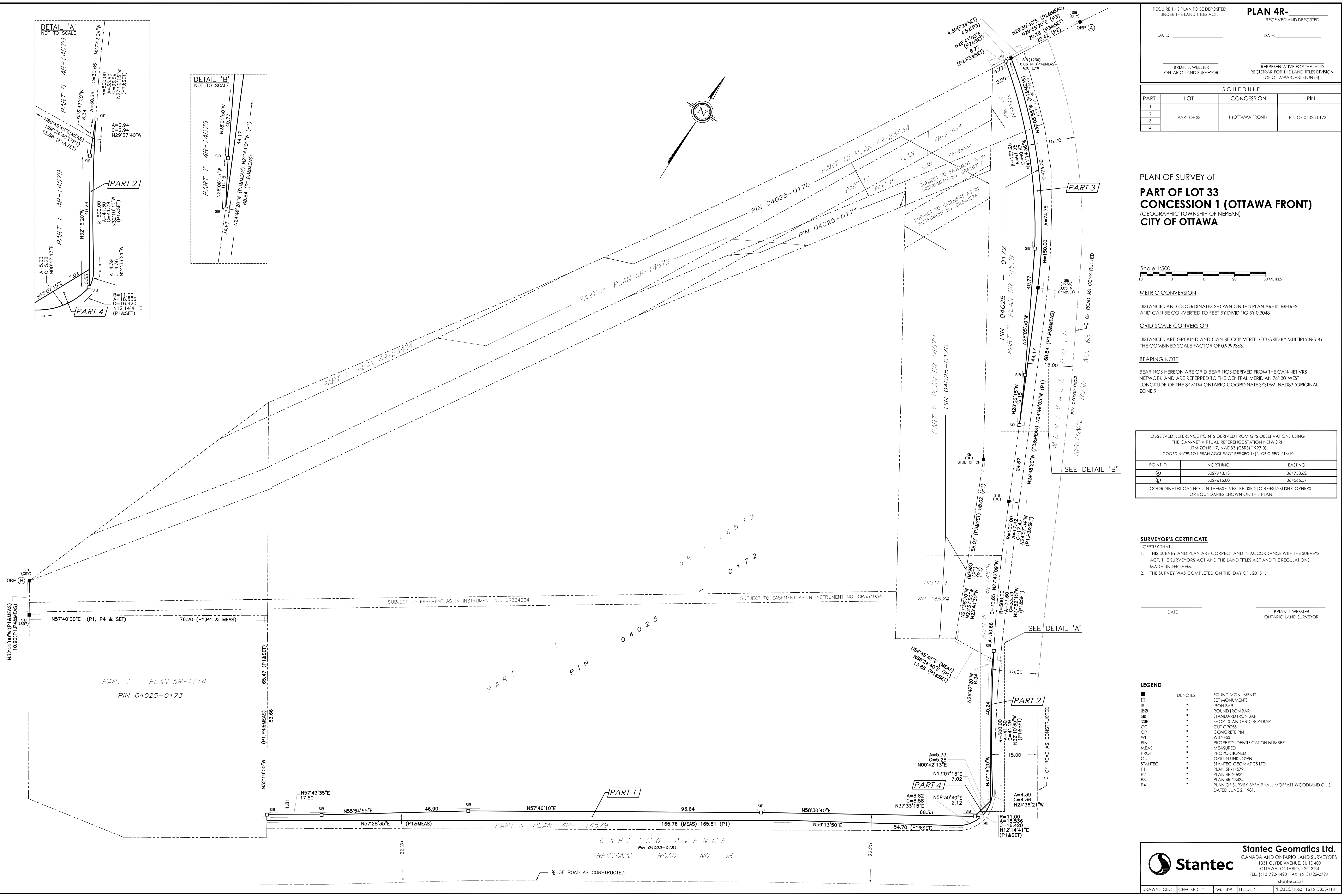
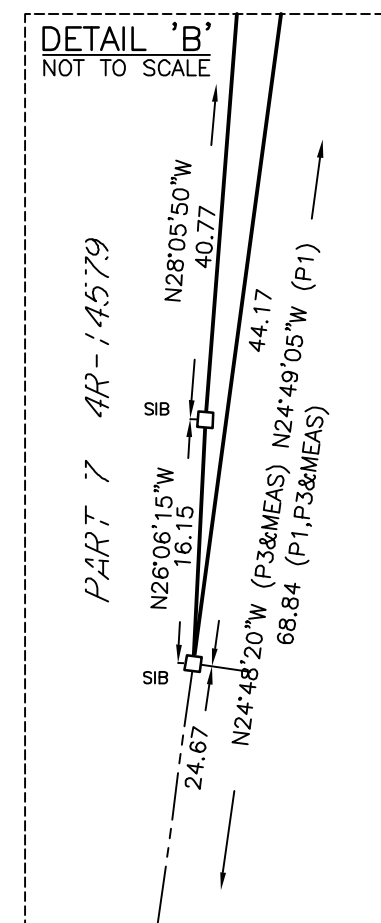
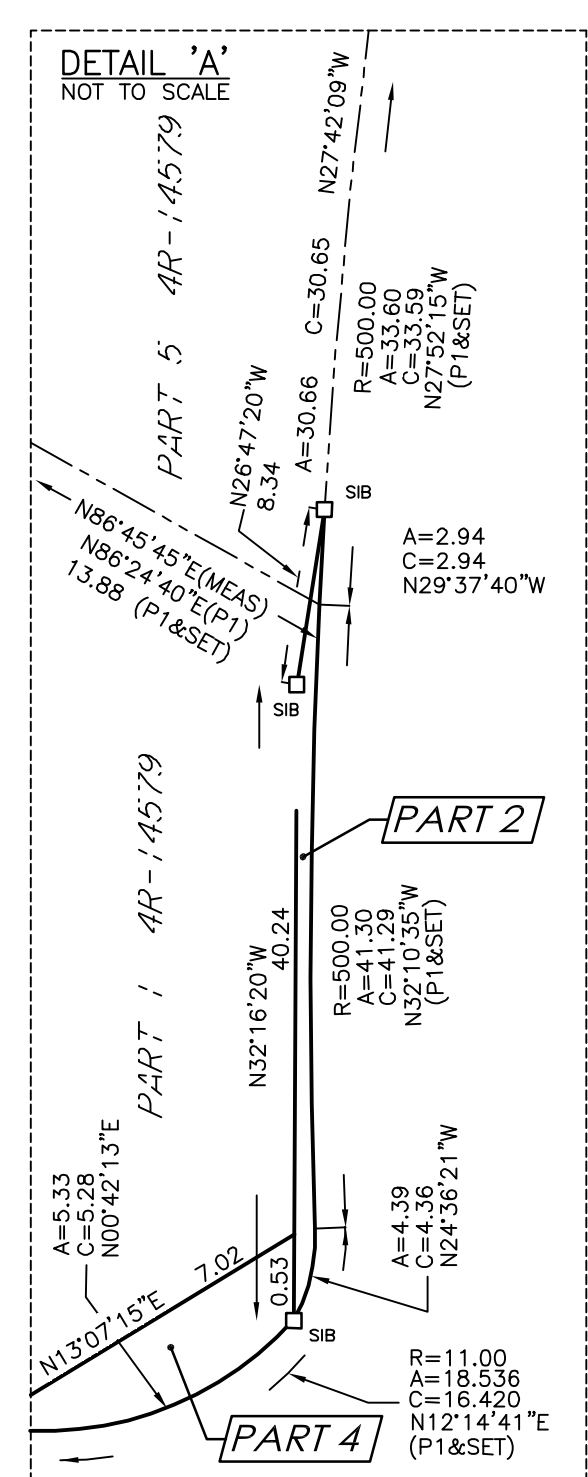


24 March 2016 13:34 PM



I REQUIRE THIS PLAN TO BE DEPOSITED UNDER THE LAND TITLES ACT.

**PLAN 4R-**

RECEIVED AND DEPOSITED

DATE: \_\_\_\_\_ DATE: \_\_\_\_\_

BRIAN J. WEBSTER  
ONTARIO LAND SURVEYOR

REPRESENTATIVE FOR THE LAND REGISTRAR FOR THE LAND TITLES DIVISION OF OTTAWA-CARLETON (4)

SCHEDULE			
PART	LOT	CONCESSION	PIN
1			
2	PART OF 33	1 (OTTAWA FRONT)	PIN OF 04025-0172
3			
4			

PLAN OF SURVEY OF  
**PART OF LOT 33  
CONCESSION 1 (OTTAWA FRONT)**  
(GEOGRAPHIC TOWNSHIP OF NEPEAN)  
CITY OF OTTAWA

Scale 1:500

**METRIC CONVERSION**  
DISTANCES AND COORDINATES SHOWN ON THIS PLAN ARE IN METRES AND CAN BE CONVERTED TO FEET BY DIVIDING BY 0.3048

**GRID SCALE CONVERSION**  
DISTANCES ARE GROUND AND CAN BE CONVERTED TO GRID BY MULTIPLYING BY THE COMBINED SCALE FACTOR OF 0.9999363.

**BEARING NOTE**  
BEARINGS HEREON ARE GRID BEARINGS DERIVED FROM THE CAN-NET VRS NETWORK AND ARE REFERRED TO THE CENTRAL MERIDIAN 76° 30' WEST LONGITUDE OF THE 3<sup>rd</sup> MTM ONTARIO COORDINATE SYSTEM, NAD83 (ORIGINAL) ZONE 9.

OBSERVED REFERENCE POINTS DERIVED FROM GPS OBSERVATIONS USING THE CAN-NET VIRTUAL REFERENCE STATION NETWORK:  
UTM ZONE 17, NAD83 (CRS) [1997.0].  
COORDINATES TO URBAN ACCURACY PER SEC 14(2) OF O-REG. 216/10

POINT ID	NORTHING	EASTING
①	5027948.13	364753.62
②	5027616.80	364566.57

COORDINATES CANNOT, IN THEMSELVES, BE USED TO RE-ESTABLISH CORNERS OR BOUNDARIES SHOWN ON THIS PLAN.

**SURVEYOR'S CERTIFICATE**  
I CERTIFY THAT:  
1. THIS SURVEY AND PLAN ARE CORRECT AND IN ACCORDANCE WITH THE SURVEYS ACT, THE SURVEYORS ACT AND THE LAND TITLES ACT AND THE REGULATIONS MADE UNDER THEM.  
2. THE SURVEY WAS COMPLETED ON THE DAY OF . 2015 .

DATE: \_\_\_\_\_ BRIAN J. WEBSTER  
ONTARIO LAND SURVEYOR

**LEGEND**

SYMBOL	DENOTES	FOUND MONUMENTS
■	SET MONUMENTS	
IB	IRON BAR	
IB2	ROUND IRON BAR	
SB	STANDARD IRON BAR	
SSB	SHORT STANDARD IRON BAR	
CC	CUT CROSS	
CP	CONCRETE PIN	
WT	WITNESS	
PIN	PROPERTY IDENTIFICATION NUMBER	
MEAS	MEASURED	
PROP	PROPORTIONED	
OU	ORIGIN UNKNOWN	
STANTEC	STANTEC GEOMATICS LTD.	
P1	PLAN 5R-14579	
P2	PLAN 4R-20902	
P3	PLAN 4R-23434	
P4	PLAN OF SURVEY BY FAIRHALL MOFFATT WOODLAND O.L.S. DATED JUNE 2, 1981.	

**Stantec Geomatics Ltd.**  
CANADA AND ONTARIO LAND SURVEYORS  
1331 CLYDE AVENUE, SUITE 400  
OTTAWA, ONTARIO, K2C 3G4  
TEL. (613) 722-4420 FAX. (613) 722-2799  
stantec.com

DRAWN: CEC CHECKED: \* PM: BW FIELD: \* PROJECT NO.: 161613355-114