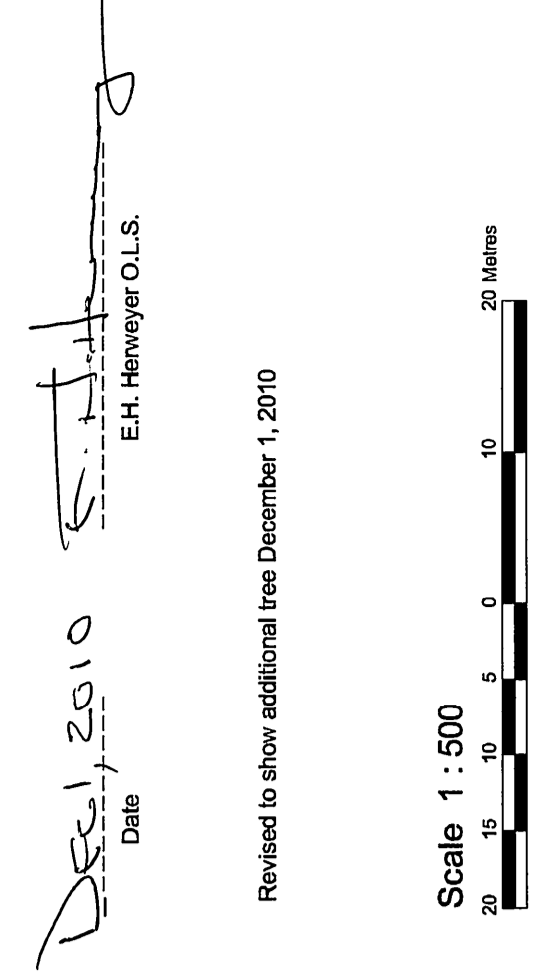


**TOPOGRAPHICAL PLAN OF
PART OF BLOCKS "I", "O" AND "P"
REGISTERED PLAN M-206
GEOGRAPHIC TOWNSHIP OF GLOUCESTER
CITY OF OTTAWA**

Prepared by Annis, O'Sullivan, Vollebek Ltd.
E.H. Henwey O.L.S.
Date: 2010



Revised to show additional fees December 1, 2010

Notes & Legend

	Deciduous Tree
	Coniferous Tree
	Fire Hydrant
	Water Valve
	Maintenance Hole (Storm Sewer)
	Maintenance Hole (Sanitary)
	Maintenance Hole (Hydro)
	Maintenance Hole (Traffic)
	Maintenance Hole (Unidentified)
	Valve Chamber (Waterman)
	Overhead Vents
	Cable Basin
	Cable Meter Well
	Hydro Meter
	Handhole
	Cable Terminal Box
	Sign
	Sign on Double Posts
	Chain Link Fence
	Board Fence
	Rail Fence
	Utility Pole
	Light Standard
	Air Conditioner
	Diameter
	Location of Elevations (Top of Cut)
	Top of Grade
	Invert
	Centreline
	Property Line
	Yellow Paint Line
	White Paint Line
	WPL

SITE AREA = 66750 m²

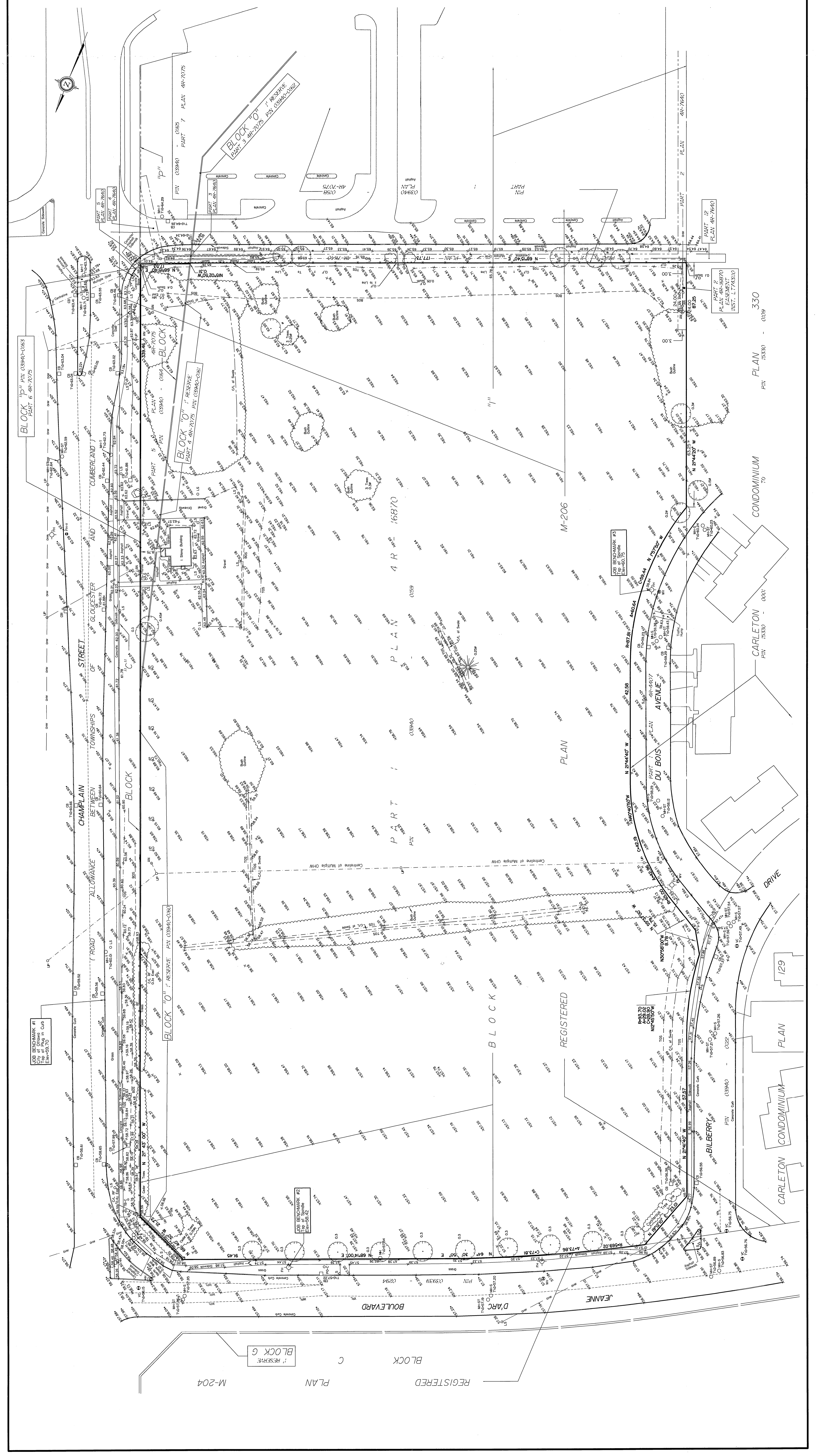
**BOUNDARY INFORMATION COMPILED FROM
PLANS 4R-7075 AND 4R-16870**

**THE PARKING AREA SOUTH OF THIS SITE AND
THE TOWNHOMES WEST OF THIS SITE ARE
TAKEN FROM EXISTING CITY OF OTTAWA
DIGITAL MAPPING.**

ELEVATION NOTES
1. The drawing cannot be accepted as acknowledging all of the utilities and it will be the responsibility of the user to contact the respective utility authorities for the location of all utilities.
2. It is the responsibility of the user of this information to verify that the job benchmark has not been altered or disturbed and that its relative elevation is in description agrees with the information shown on the drawing.

UTILITY NOTES
1. This drawing cannot be accepted as acknowledging all of the utilities and it will be the responsibility of the user to contact the respective utility authorities for the location of all utilities.
2. Only visible surface utilities were located.
3. A field location of underground plant by the pertinent utility authority is mandatory before any work involving breaking ground, probing, excavating etc.

ANNIS, O'SULLIVAN, VOLLEBEK LTD.
14 Commerce Gate, Suite 300
Ottawa, Ontario
K1H 1B1
Phone: (613) 733-2727
Fax: (613) 733-2729
www.annis-osullivan.com



PLAN 330 - 01039

PLAN 330 - 01039

PLAN 129

PLAN 129

PLAN 129