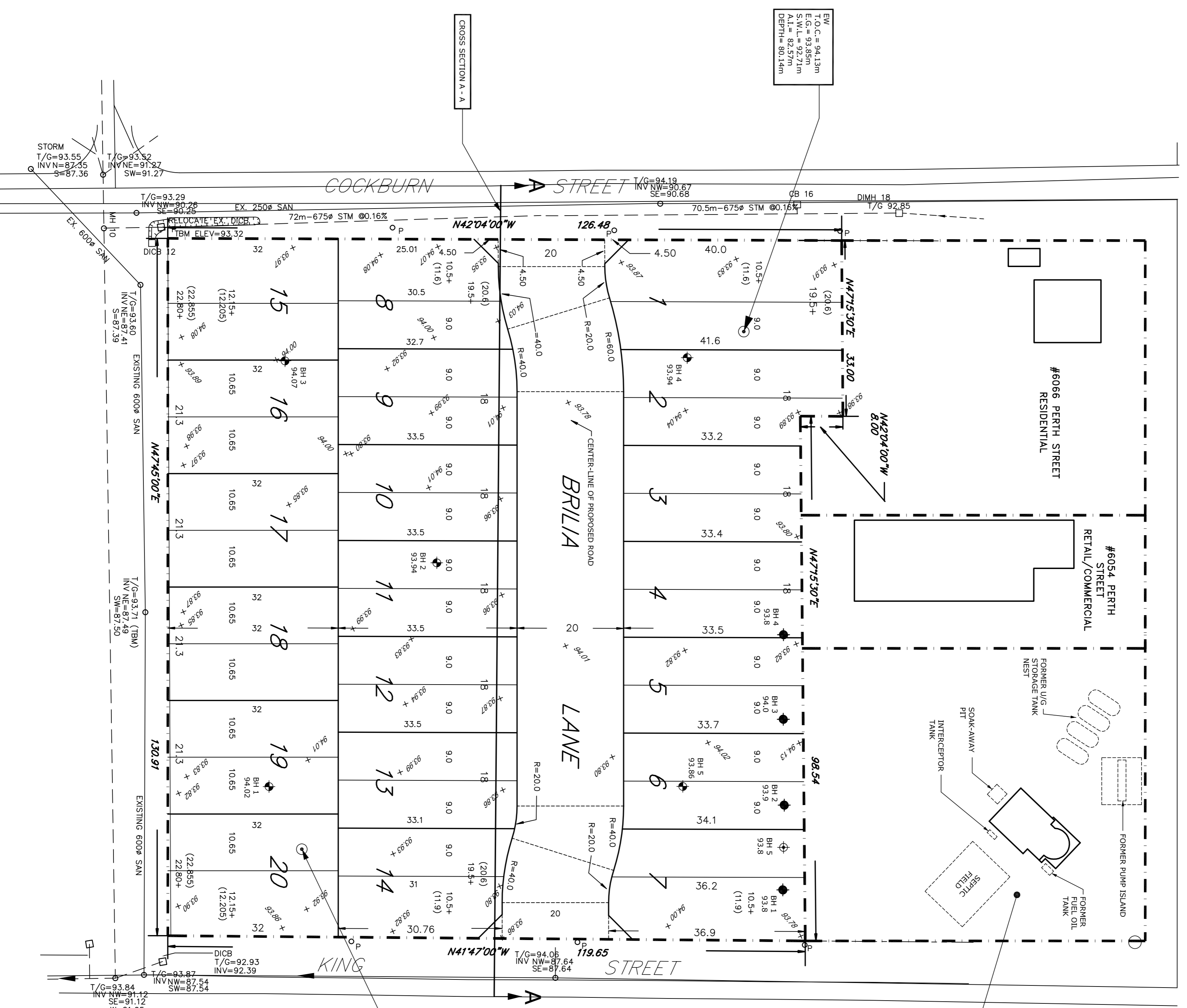


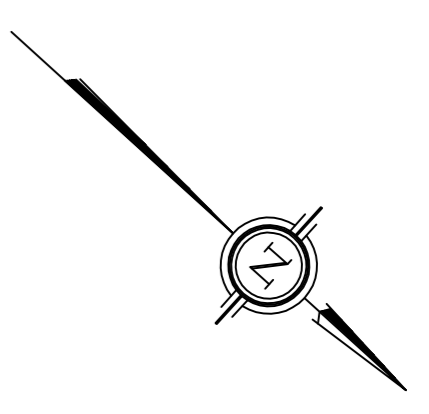
PERTH STREET



EW  
T.O.C. = 94.13m  
E.G. = 93.85m  
S.W.L. = 92.71m  
DEPTH = 88.14m

T-V 1  
T.O.C. = 94.59m  
E.G. = 93.25m  
S.W.L. = 92.39m  
DEPTH = 20.19m

EXCAVATION CONTRACTOR  
(FORMER SERVICE STATION)



LEGEND:

- ◆ BOREHOLE LOCATION, PATTERSON GROUP REPORT NO. PE1523-1, JULY 2009
- ⊕ BOREHOLE WITH MONITORING WELL INSTALLED, PATTERSON GROUP REPORT NO. PE1523-1, JULY 2009
- ⊖ BOREHOLE LOCATION, PATTERSON GROUP REPORT NO. PE2022-1, FEBRUARY 2010
- APPROXIMATE LOCATION OF DRILLED WELL
- TOP OF CASING
- EG EXISTING GRADE
- SWL STATIC WATER LEVEL
- AI AQUIFER INTERCEPT
- 93.30 GROUND SURFACE ELEVATION (m)

TBM - TOP OF GATE OF MANHOLE, GEODETIC ELEVATION = 93.71m.

NO.	DESCRIPTION	DATE

CLIENT  
**TALOS CUSTOM HOMES LTD.**

PROJECT LOCATION  
**PROPOSED RESIDENTIAL SUBDIVISION**  
10 KING STREET  
OTTAWA (RICHMOND), ONTARIO

DRAWING  
**TEST HOLE LOCATION PLAN**

DRAWING NO. **PH1292-1** REVISION NO.

**paterson group**  
Consulting engineers  
25 Concourse Gate, Unit 1, Ottawa, Ontario K2E 7T7