

PLAN OF SURVEY OF

PART OF LOT 1 CONCESSION 1 Geographic Township of Huntley CITY OF OTTAWA Surveyed by Annis, O'Sullivan, Vollebek Ltd.

Surveyor's Certificate

I CERTIFY THAT: 1. This survey and plan are correct and in accordance with the Surveys Act, the Surveyors Act, the Land Titles Act and the regulations made under them. 2. The survey was completed on the 15th day of February, 2013.

Date 15 Feb 2013 E. H. Herweyer Ontario Land Surveyor

Notes & Legend

- Denotes Survey Monument Planted
-■- Survey Monument Found
SIB Standard Iron Bar
SIBB Short Standard Iron Bar
IB Iron Bar
(WT) Witness
(AOC) Annis, O'Sullivan, Vollebek Ltd.
Meas. Measured
(P1) Plan 4R-21238
(P2) Registered Plan 4M-1364
(P3) Registered Plan 4M-1401
(P4) Plan 4R-20912
(P5) Plan SR-7189
(P6) Plan SR-4074
P&WF Remains of Post & Wire Fence
SRF Remains of Snake Rail Fence

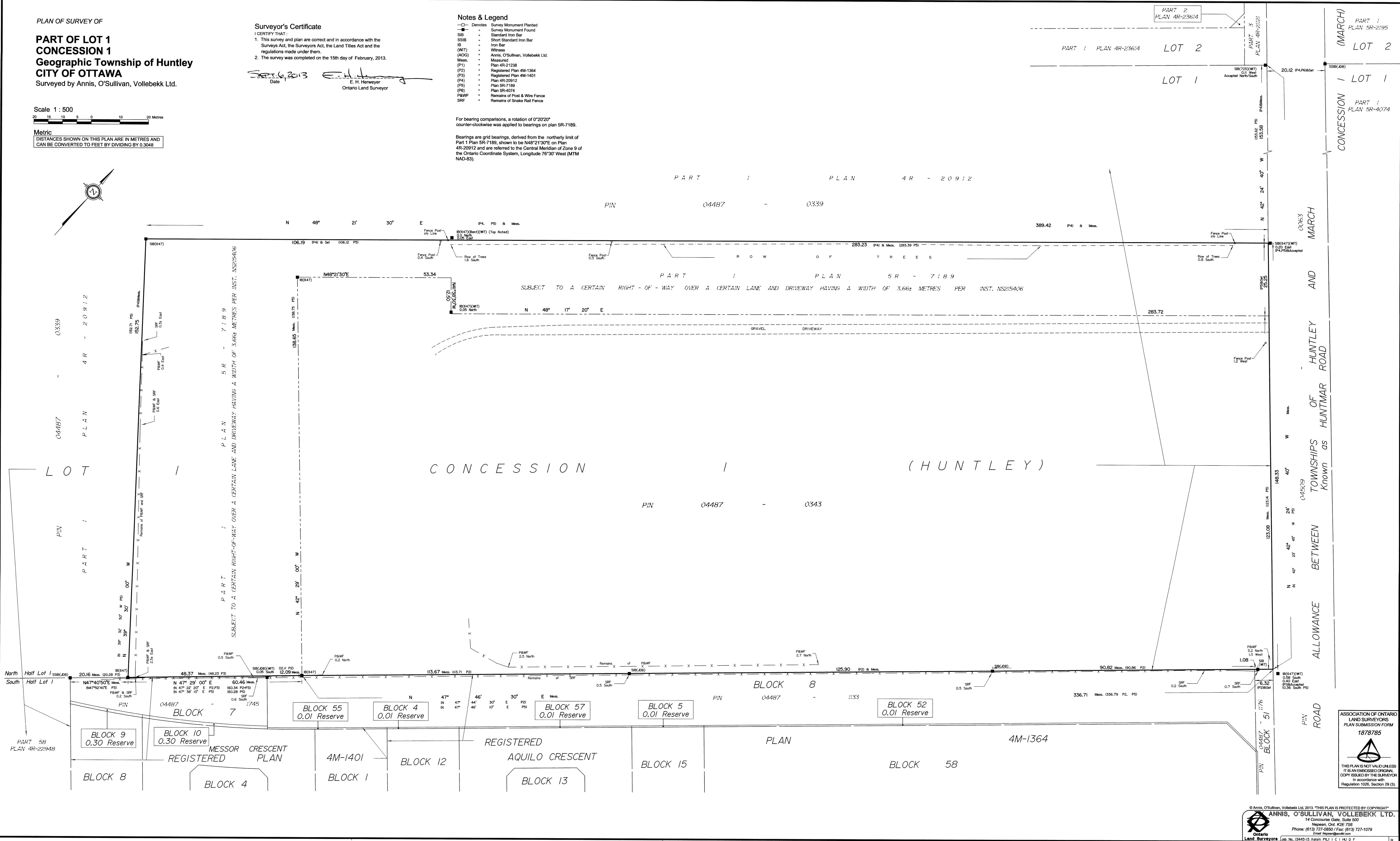
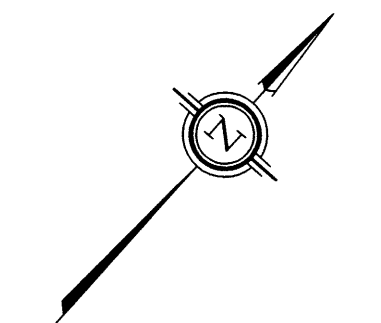
For bearing comparisons, a rotation of 0°20'20" counter-clockwise was applied to bearings on plan 5R-7189.

Bearings are grid bearings, derived from the northerly limit of Part 1 Plan SR-7189, shown to be N48°21'30"E on Plan 4R-20912 and are referred to the Central Meridian of Zone 9 of the Ontario Coordinate System, Longitude 76°30' West (MTM NAD-83).

Scale 1 : 500



Metric DISTANCES SHOWN ON THIS PLAN ARE IN METRES AND CAN BE CONVERTED TO FEET BY DIVIDING BY 0.3048



ASSOCIATION OF ONTARIO LAND SURVEYORS PLAN SUBMISSION FORM 1878785 THIS PLAN IS NOT VALID UNLESS IT IS AN EMBOSSED ORIGINAL COPY ISSUED BY THE SURVEYOR In accordance with Regulation 1026, Section 29 (3)