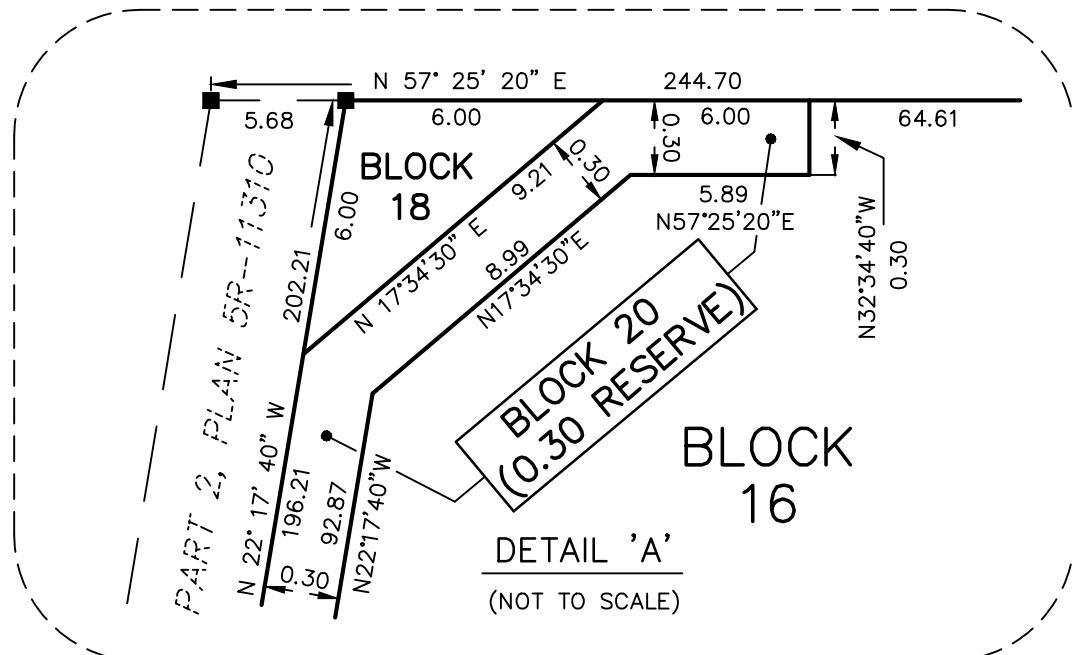


**METRIC** DISTANCES AND COORDINATES SHOWN ON THIS PLAN ARE IN METRES AND CAN BE CONVERTED TO FEET BY DIVIDING BY 0.3048.



APPROVED UNDER SECTION 51 OF THE PLANNING ACT BY THE CITY OF OTTAWA THIS \_\_\_\_\_ DAY OF \_\_\_\_\_ 2012.

JOHN L. MOSER, GENERAL MANAGER  
PLANNING AND GROWTH MANAGEMENT  
INFRASTRUCTURE SERVICES AND COMMUNITY SUSTAINABILITY  
CITY OF OTTAWA

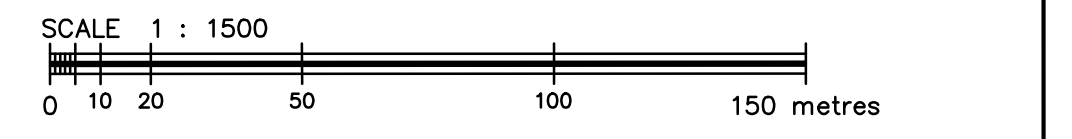
**PLAN 4M-**

I certify that this Plan is registered in the Land Registry Office for the Land Titles Division of Ottawa-Carleton N° 4 at \_\_\_\_\_ o'clock on the \_\_\_\_\_ day of \_\_\_\_\_ 2012 and entered in the register for Property Identifier 04318-0479 and required consents are registered as Plan Document No. \_\_\_\_\_

\_\_\_\_\_  
Land Registrar

THE SUBDIVISION REPRESENTED BY THIS PLAN AFFECTS ALL OF PIN 04318-0479

**PLAN OF SUBDIVISION OF PART OF LOT 11, CONCESSION 3 GEOGRAPHIC TOWNSHIP OF OSGOODE NOW CITY OF OTTAWA**



**FAIRHALL, MOFFATT & WOODLAND LIMITED**  
ONTARIO LAND SURVEYORS

**SURVEYOR'S CERTIFICATE**

I CERTIFY THAT:  
1. THIS SURVEY AND PLAN ARE CORRECT AND IN ACCORDANCE WITH THE SURVEYS ACT, THE SURVEYORS ACT, THE LAND TITLES ACT AND THE REGULATIONS MADE UNDER THEM.  
2. THE SURVEY WAS COMPLETED ON \_\_\_\_\_, 2012.

DATE \_\_\_\_\_ DAVID W. WOODLAND  
ONTARIO LAND SURVEYOR

**OWNER'S CERTIFICATE**

THIS IS TO CERTIFY THAT:  
1. LOTS 1 TO 15, BOTH INCLUSIVE, BLOCKS 16 & 17, THE STREET, NAMELY STREET 1, THE ROAD WIDENINGS, NAMELY BLOCKS 18 & 19, AND THE RESERVE, NAMELY BLOCK 20, HAVE BEEN LAID OUT IN ACCORDANCE WITH OUR INSTRUCTIONS.  
2. THE STREET AND ROAD WIDENINGS ARE HEREBY DEDICATED TO THE CITY OF OTTAWA AS PUBLIC HIGHWAY.

DATED THIS \_\_\_\_\_ DAY OF \_\_\_\_\_, 2012.

I HAVE THE AUTHORITY TO BIND THE CORPORATION \_\_\_\_\_

COORDINATES WERE DERIVED FROM REAL TIME NETWORK OBSERVATIONS (SMARTNET) 3' MTM ZONE 9, NAD83 ORIGINAL.

COORDINATES HAVE BEEN DETERMINED TO AN URBAN ACCURACY IN ACCORDANCE WITH SECTION 14(2) OF O.REG 216/10.

POINT ID	NORTHING	EASTING
*	*	*
*	*	*
*	*	*
*	*	*

COORDINATES CANNOT IN THEMSELVES BE USED TO RE-ESTABLISH CORNERS OR BOUNDARIES SHOWN ON THIS PLAN.

**Fairhall Moffatt & Woodland**  
LIMITED  
ONTARIO LAND SURVEYORS  
Surveying and Land Information Services  
235 TERENCE MATTHEWS CRESCENT, KANATA, ONTARIO K2M 2B3  
TEL: (613) 591-2580 FAX: (613) 591-1495  
www.fmw.on.ca

OT TAWA

JOB No. 015200  
FILE No. \_\_\_\_\_  
REFERENCE No. 161-3-OSGOODE  
S:\JOBS\015200\DWG\mplan.q152.ci\3d.dwg

- NOTES**
- BEARINGS HEREON ARE GRID BEARINGS AND ARE DERIVED FROM HORIZONTAL CONTROL MONUMENTS "\_\_\_\_\_" AND ARE REFERRED TO THE CENTRAL MERIDIAN 76°30' W LONGITUDE, ZONE 9 OF THE 3' MTM ONTARIO COORDINATE SYSTEM, NAD 83 ORIGINAL.
  - DISTANCES ARE GROUND AND CAN BE CONVERTED TO GRID BY MULTIPLYING BY THE COMBINED SCALE FACTOR OF 0.9999\_\_\_\_.

- LEGEND**
- - SURVEY MONUMENT SET
  - - SURVEY MONUMENT FOUND
  - SIB - STANDARD IRON BAR
  - SSIB - SHORT STANDARD IRON BAR
  - IB - IRON BAR
  - (P) -
  - (P1) -
  - PIN - PROPERTY IDENTIFIER NUMBER
  - PCM - PROJECT CONTROL MONUMENT
  - (73) - POINT NUMBER IDENTIFIER
  - (S) - SET
  - (M) - MEASURED
  - (UP) - UTILITIES POLE

