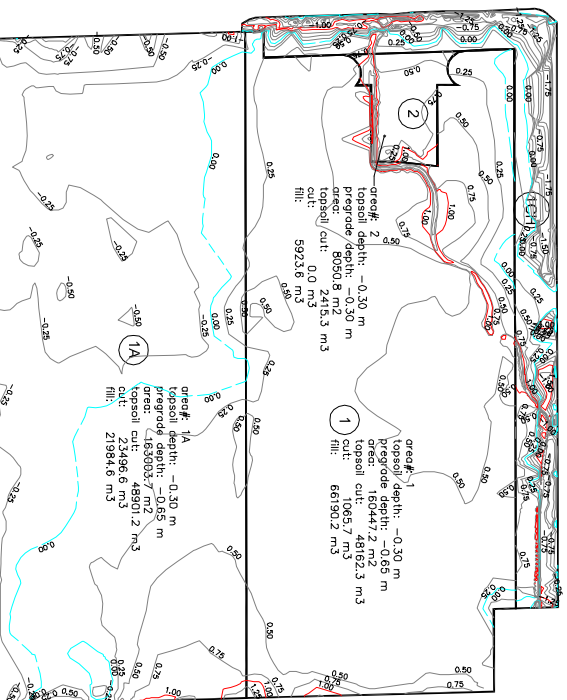
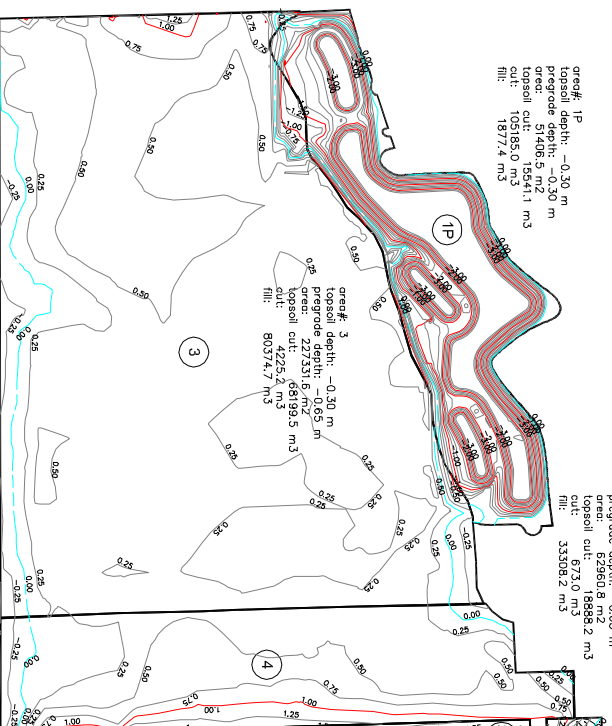


area# 10A  
 topsoil depth: -0.30 m  
 pregrade depth: -0.30 m  
 area: 34652.4 m<sup>2</sup>  
 pregrade area: 44444.8 m<sup>2</sup>  
 topsoil cut: 6208.1 m<sup>3</sup>  
 fill: 613.8 m<sup>3</sup>



area# 1P  
 topsoil depth: -0.30 m  
 pregrade depth: -0.30 m  
 area: 51408.5 m<sup>2</sup>  
 pregrade area: 51408.5 m<sup>2</sup>  
 topsoil cut: 15441.1 m<sup>3</sup>  
 fill: 1977.4 m<sup>3</sup>



area# 2CH  
 topsoil depth: -0.30 m  
 pregrade depth: -0.30 m  
 area: 2044.4 m<sup>2</sup>  
 pregrade area: 613.4 m<sup>2</sup>  
 topsoil cut: 21.4 m<sup>3</sup>  
 fill: 984.1 m<sup>3</sup>

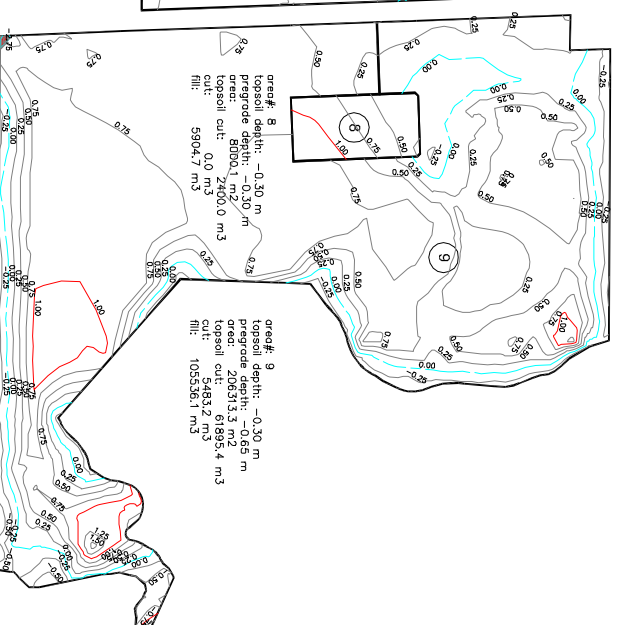
area# 2P  
 topsoil depth: -0.30 m  
 pregrade depth: -0.30 m  
 area: 2758.3 m<sup>2</sup>  
 pregrade area: 8255.5 m<sup>2</sup>  
 topsoil cut: 150.2 m<sup>3</sup>  
 fill: 2351.1 m<sup>3</sup>

area# 4CH  
 topsoil depth: -0.30 m  
 pregrade depth: -0.30 m  
 area: 8687.6 m<sup>2</sup>  
 pregrade area: 2606.3 m<sup>2</sup>  
 topsoil cut: 27.9 m<sup>3</sup>  
 fill: 9857.6 m<sup>3</sup>

area# 7  
 topsoil depth: -0.30 m  
 pregrade depth: -0.30 m  
 area: 32501.9 m<sup>2</sup>  
 pregrade area: 9750.6 m<sup>2</sup>  
 topsoil cut: 0.0 m<sup>3</sup>  
 fill: 3718.7 m<sup>3</sup>

area# 5  
 topsoil depth: -0.30 m  
 pregrade depth: -0.65 m  
 area: 6734.021 m<sup>2</sup>  
 pregrade area: 73402.1 m<sup>2</sup>  
 topsoil cut: 0.0 m<sup>3</sup>  
 fill: 198386.1 m<sup>3</sup>

area# 8  
 topsoil depth: -0.30 m  
 pregrade depth: -0.30 m  
 area: 8000.2 m<sup>2</sup>  
 pregrade area: 2600.0 m<sup>2</sup>  
 topsoil cut: 0.0 m<sup>3</sup>  
 fill: 5904.7 m<sup>3</sup>



Area#	cut	area	fill	Area	topsoil	cut	fill	net	strip	pregrade
ID	m <sup>2</sup>	m <sup>2</sup>	m <sup>2</sup>	m <sup>2</sup>	m <sup>3</sup>	m <sup>3</sup>	m <sup>3</sup>	m <sup>3</sup>	depth	depth
1	6,016	154,430	160,447	48,162	1,066	66,190	-65,125	-0.30	-0.65	
1A	92,930	70,072	163,004	48,901	23,497	21,985	-1,512	-0.30	-0.65	
2	0	8,051	2,415	0	5,924	-5,924	1,512	-0.30	-0.30	
1CH	20,007	14,655	34,662	10,452	16,208	6,164	10,044	-0.30	-0.30	
3	15,296	212,029	227,332	68,200	4,225	80,375	-76,150	-0.30	-0.65	
4	3,509	59,452	62,961	18,888	673	33,308	-32,635	-0.30	-0.65	
2CH	387	1,657	2,044	613	21	984	-963	-0.30	-0.30	
3CH	397	8,955	9,352	2,806	44	10,156	-10,112	-0.30	-0.30	
4CH	261	8,427	8,688	2,606	28	9,858	-9,830	-0.30	-0.30	
5	0	25,139	25,139	7,542	0	33,661	-33,661	-0.30	-0.30	
6	2,740	241,933	244,674	73,402	525	198,366	-197,841	-0.30	-0.65	
7	0	32,502	32,502	9,751	0	37,219	-37,219	-0.30	-0.30	
8	0	8,000	8,000	2,400	0	5,595	-5,595	-0.30	-0.30	
9	25,035	181,279	206,313	61,895	5,483	105,536	-100,053	-0.30	-0.65	
1P	46,517	4,865	51,407	15,541	105,185	1,877	103,308	-0.30	-0.30	
2P	23,349	4,125	27,518	8,256	49,350	2,351	46,999	-0.30	-0.30	
<b>Totals:</b>		<b>1,272,093</b>	<b>381,830</b>	<b>206,305</b>	<b>619,858</b>	<b>-413,553</b>				

