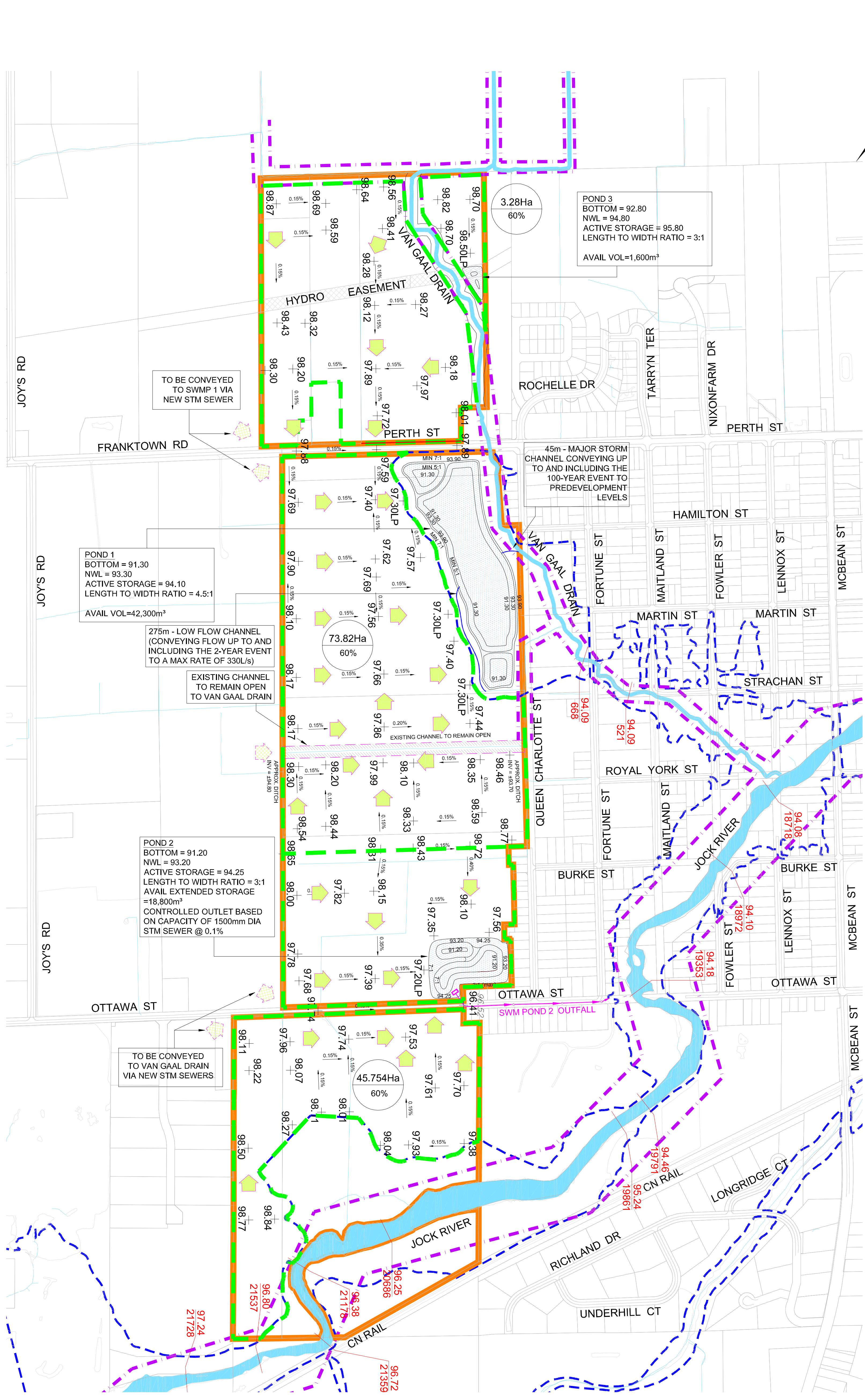


PUBLIC OPEN HOUSE: STORMWATER MANAGEMENT

DRAWING 5: OPTION 3, CONCEPTUAL STORMWATER MANAGEMENT PLAN



TO BE CONVEYED TO SWMP 1 VIA NEW STM SEWER

3.28Ha
60%

POND 3
BOTTOM = 92.80
NWL = 94.80
ACTIVE STORAGE = 95.80
LENGTH TO WIDTH RATIO = 3:1
AVAIL VOL=1,600m³

POND 1
BOTTOM = 91.30
NWL = 93.30
ACTIVE STORAGE = 94.10
LENGTH TO WIDTH RATIO = 4.5:1
AVAIL VOL=42,300m³

275m - LOW FLOW CHANNEL (CONVEYING FLOW UP TO AND INCLUDING THE 2-YEAR EVENT TO A MAX RATE OF 330L/s)

EXISTING CHANNEL TO REMAIN OPEN TO VAN GAAL DRAIN

73.82Ha
60%

POND 2
BOTTOM = 91.20
NWL = 93.20
ACTIVE STORAGE = 94.25
LENGTH TO WIDTH RATIO = 3:1
AVAIL EXTENDED STORAGE = 18,800m³
CONTROLLED OUTLET BASED ON CAPACITY OF 1500mm DIA STM SEWER @ 0.1%

TO BE CONVEYED TO VAN GAAL DRAIN VIA NEW STM SEWERS

45.754Ha
60%

- STUDY LIMIT
- - - MEANDER BELT
- - - REGULATORY FLOOD LINE
- - - STORM DRAINAGE AREA
- - - STORM OUTFALL
- OVERLAND FLOW DIRECTION
- EXTERNAL OVERLAND FLOW DIRECTION
- EXISTING ELEVATION CONTOUR
- 96.80 FLOOD LINE ELEVATION
- 21537 FLOOD LINE SECTION
- EXISTING DITCH
- 96.84 PROPOSED ELEVATION
- 94.61 EXISTING ELEVATION
- 73.82Ha DRAINAGE AREA
- 60% IMPERVIOUSNESS



CONCEPTUAL SWM PLAN
OPTION 3A

1:5,000
DRAWING: 5