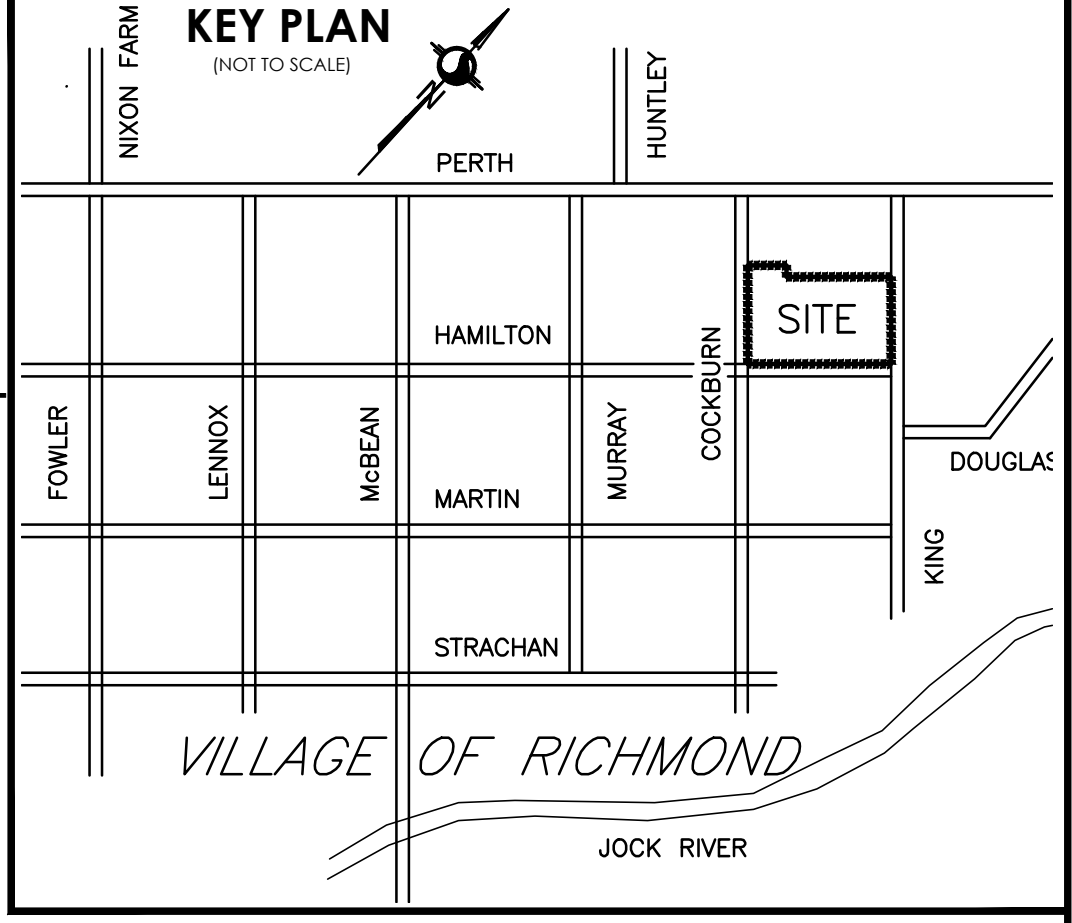


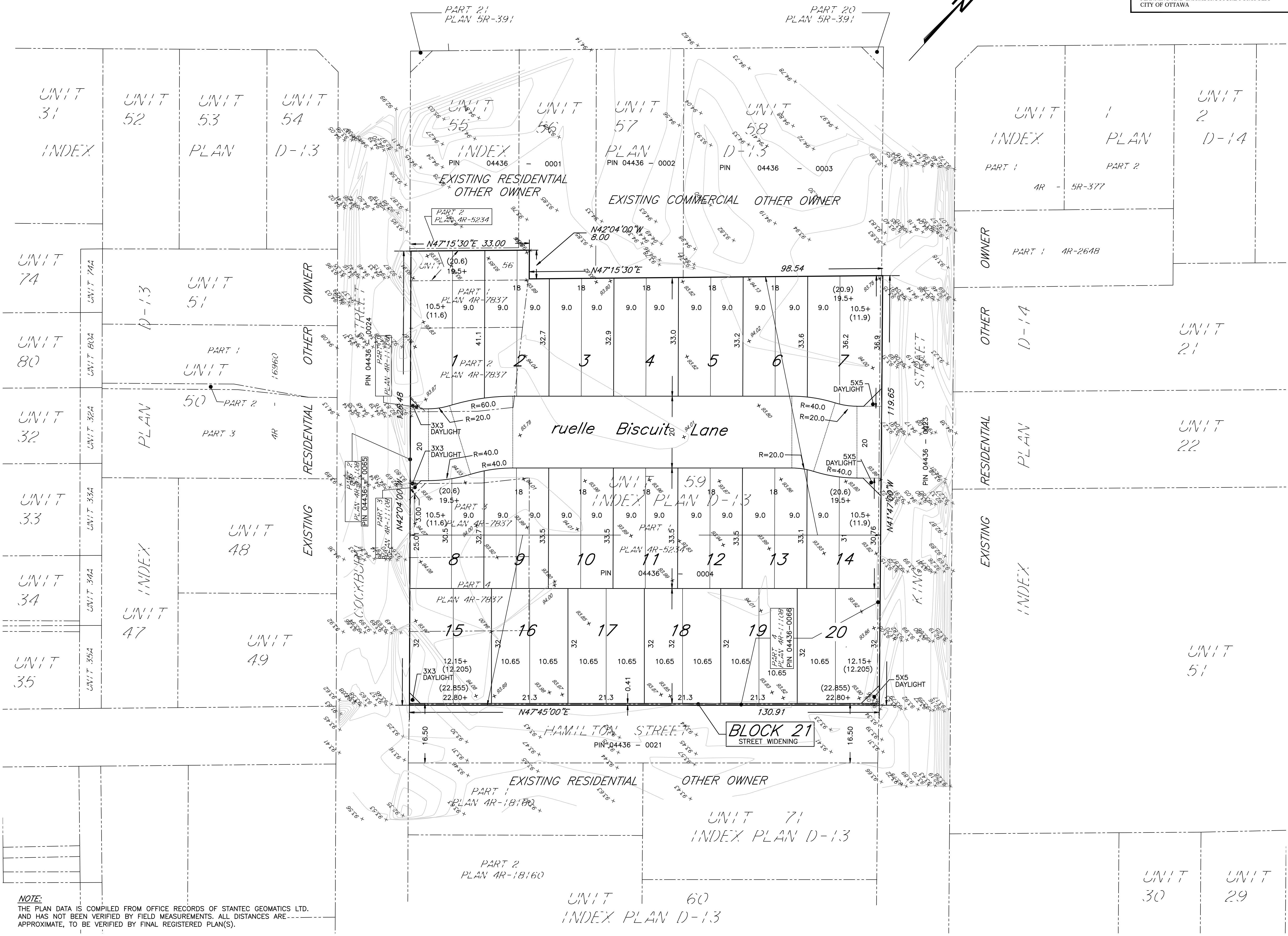
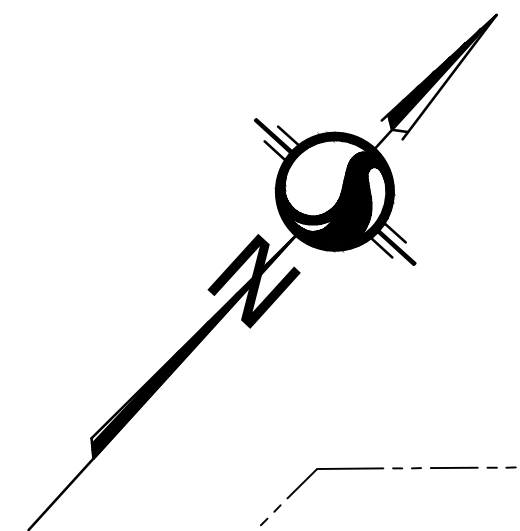
2 August 2016, 8:41 AM

SUBJECT TO THE CONDITIONS, IF ANY, SET FORTH IN OUR LETTER DATED _____ 20 ____ THIS DRAFT PLAN IS APPROVED BY THE CITY OF OTTAWA UNDER SECTION 51 OF THE PLANNING ACT. THIS _____ DAY OF _____, 2016.

DERRICK MOODIE, MANAGER
DEVELOPMENT REVIEW, RURAL SERVICES
PLANNING AND GROWTH MANAGEMENT DEPARTMENT
PLANNING AND INFRASTRUCTURE PORTFOLIO
CITY OF OTTAWA



PERTH STREET
(ROAD ALLOWANCE BETWEEN THE 3RD AND 4TH CONCESSION OF GOULBOURN TOWNSHIP (AS WIDENED))



**DRAFT PLAN OF SUBDIVISION OF
UNIT 59 AND PART OF UNIT 56
INDEX PLAN D-13
(GEOGRAPHIC TOWNSHIP OF GOULBOURN)
CITY OF OTTAWA**



METRIC CONVERSION
DISTANCES AND COORDINATES SHOWN ON THIS PLAN ARE IN METRES AND CAN BE CONVERTED TO FEET BY DIVIDING BY 0.3048

ADDITIONAL INFORMATION REQUIRED UNDER SECTION 51 OF THE PLANNING ACT.

- (A)-AS SHOWN ON DRAFT PLAN
- (B)-AS SHOWN ON DRAFT PLAN
- (C)-AS SHOWN ON DRAFT AND KEY PLANS
- (D)-RESIDENTIAL
- (E)-AS SHOWN ON DRAFT PLAN
- (F)-AS SHOWN ON DRAFT PLAN
- (G)-AS SHOWN ON DRAFT PLAN
- (H)-PRIVATE WELL
- (I)-SEE SOIL REPORT
- (J)-AS SHOWN ON DRAFT PLAN
- (K)-CITY STORM/SANITARY SERVICES AVAILABLE
- (L)-NONE KNOWN

LAND USE
AREA OF LOTS = 1.32 Hectares (3.26 Acres)
AREA OF BLOCK 21 = 0.23 Hectares (0.56 Acres)
AREA OF ROADS = 0.24 Hectares (0.60 Acres)
TOTAL AREA OF SUBDIVISION = 1.59 Hectares (3.92 Acres)

OWNER'S CERTIFICATE

I HEREBY AUTHORIZE STANTEC GEOMATICS LTD. TO SUBMIT THIS DRAFT PLAN OF SUBDIVISION ON MY BEHALF

DATE _____ DAVID TOSCANO, PRESIDENT
TOSCANO LAND CORP.
I HAVE THE AUTHORITY TO BIND THE CORPORATION

SURVEYOR'S CERTIFICATE

I HEREBY CERTIFY THAT THE BOUNDARIES OF THE SUBJECT LANDS AND THEIR RELATIONSHIP TO ADJOINING LANDS HAVE BEEN ACCURATELY AND CORRECTLY SHOWN.

DATE _____ I. HARTWICK
ONTARIO LAND SURVEYOR

AUG 27/16	add street name	07.dwg	CEC
FEB 17/16	add street widening block 21 adjusted lotting rec'd; land use schedule	05.dwg	CEC
JAN 20/16	add abutting lot fabric, and daylight and update titleblock to 2016	05.dwg	CEC
OCT 6/09	revisions to center-line, re-lot 7 and 14, pdf to WGS for review	Rev2.dwg	CS
OCT 2/09	insert (on built grades/topo) from rec'd Novatech dwg files, pdf to WGS for review	Rev2.dwg	CS
OCT 1/09	Revisions per WGS meeting, pdf Concept Oct 1-09 to WGS for preliminary review	Rev2.dwg	CS
SEPT 30/08	Prep Concept Sept 30-08-A per DT/WGS for rec'd Sept 29-08	Rev1.dwg	CS

DATE _____ REVISIONS

Stantec Geomatics Ltd.
ONTARIO LAND SURVEYORS
CANADA LANDS SURVEYORS
1331 CLYDE AVENUE, SUITE 400
OTTAWA, ONTARIO K2C 3G4
TEL: (613)722-4420 FAX: (613)722-2799
stantec.com

DRAWN: CS/CEC CHECKED: KJ PM: KJ FIELD: * PROJECT NO.: 16161899-130

NOTE:
THE PLAN DATA IS COMPILED FROM OFFICE RECORDS OF STANTEC GEOMATICS LTD. AND HAS NOT BEEN VERIFIED BY FIELD MEASUREMENTS. ALL DISTANCES ARE APPROXIMATE, TO BE VERIFIED BY FINAL REGISTERED PLAN(S).