


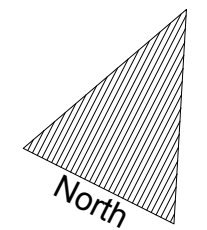


TO BE READ
 IN
 CONJUNCTION
 WITH IFS
 ASSOCIATES
 REPORT
 "TREE
 CONSERVATION
 REPORT 21
 Withrow
 Avenue
 Ottawa"

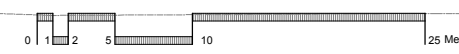
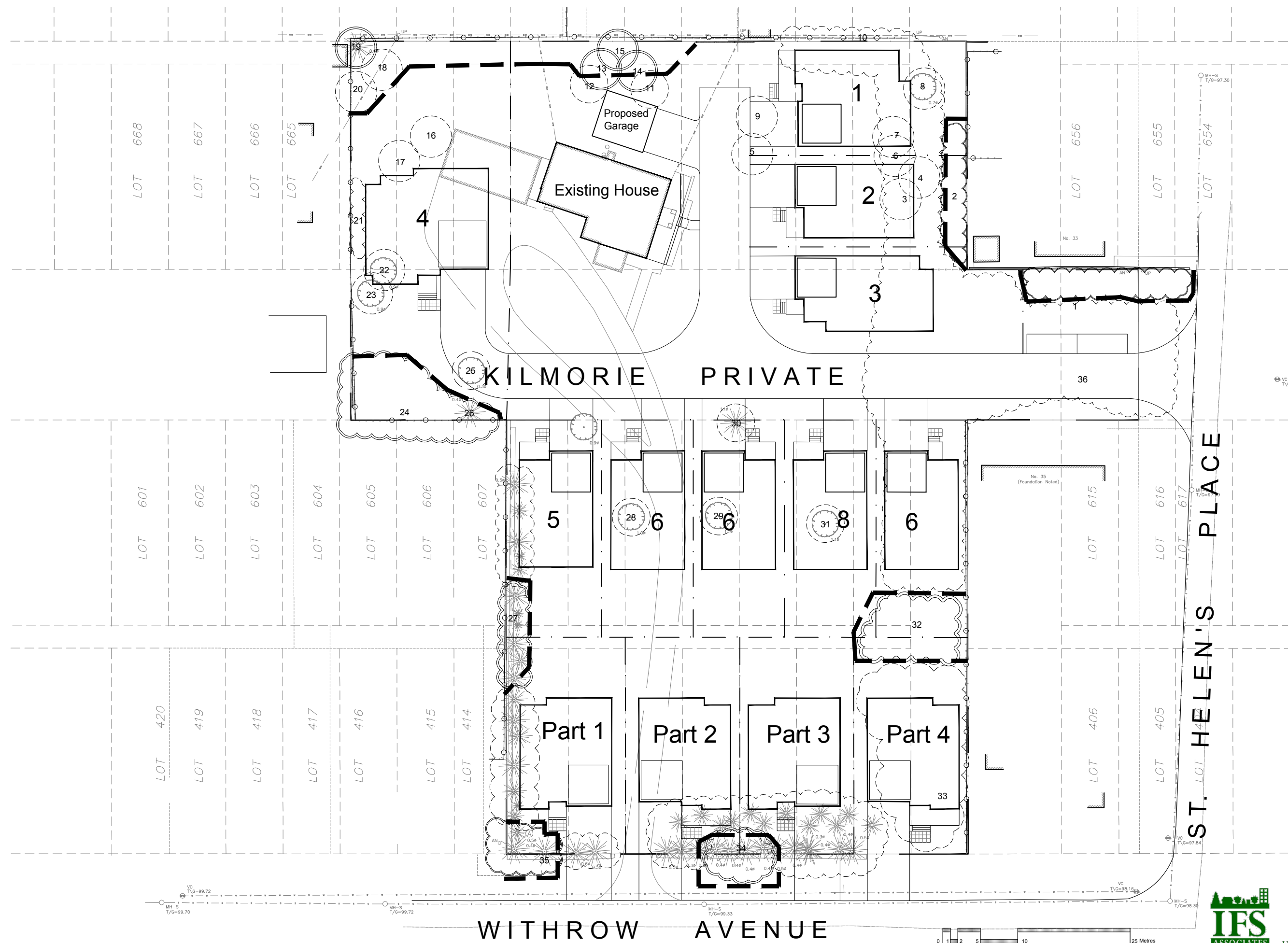
-  Existing Tree to Remain
-  Existing Tree to be Removed
-  Protection for Existing Trees

March 31
 2018



TCR
 TREE
 CONSERVATION
 REPORT

21
 Withrow
 Avenue



P.O. Box 13593, Ottawa, ON K2K 1X6
 Telephone: (613) 839-0101
 Fax: (613) 839-0114
 Website: www.ifsassociates.ca