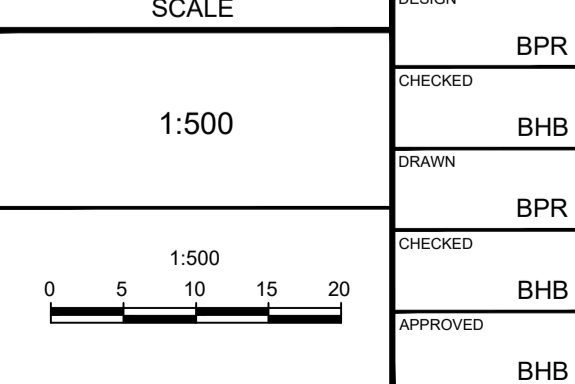


NOTE:
THE POSITION OF ALL POLE LINES, CONDUITS,
WATERMANS, SEWERS AND OTHER
UNDERGROUND AND OVERGROUND UTILITIES AND
STRUCTURES IS NOT NECESSARILY SHOWN ON
THE CONTRACT DRAWINGS, AND WHERE SHOWN,
THE ACCURACY OF THE POSITION OF SUCH
UTILITIES AND STRUCTURES IS NOT GUARANTEED.
BEFORE STARTING WORK, DETERMINE THE EXACT
LOCATION OF ALL SUCH UTILITIES AND
STRUCTURES AND ASSUME ALL LIABILITY FOR
DAMAGE TO THEM.

No.	REVISION	DATE	BY
5.	ISSUED FOR PH 2 REVIEW	JUN 16/26	BHB
4.	ISSUED FOR RE-SUBMISSION REVIEW	MAR 3/25	BHB
3.	ISSUED FOR RE-SUBMISSION REVIEW	DEC 20/24	BHB
2.	ISSUED FOR RE-SUBMISSION REVIEW	APR 10/24	BHB
1.	ISSUED FOR REVIEW	JAN 6/23	BHB

SCALE	DESIGN	CHECKED	DRAWN	APPROVED
1:500	BPR	BHB	BPR	BHB



FOR REVIEW ONLY

PROFESSIONAL ENGINEER
B. P. RUNDLE
100527529
Jun 24, 2026
PROVINCE OF ONTARIO

NOVATECH
Engineers, Planners & Landscape Architects
Suite 200, 240 Michael Cowland Drive
Ottawa, Ontario, Canada K2M 1P6
Telephone: (613) 254-9643
Facsimile: (613) 254-5867
Website: www.novatech-eng.com

LOCATION
CITY OF OTTAWA
STINSON LANDS SUBDIVISION

DRAWING NAME
CONCEPTUAL GENERAL PLAN OF SERVICES 1

PROJECT No. 121153-00
REV 1 REV #5
DRAWING No. 121153-GP1