

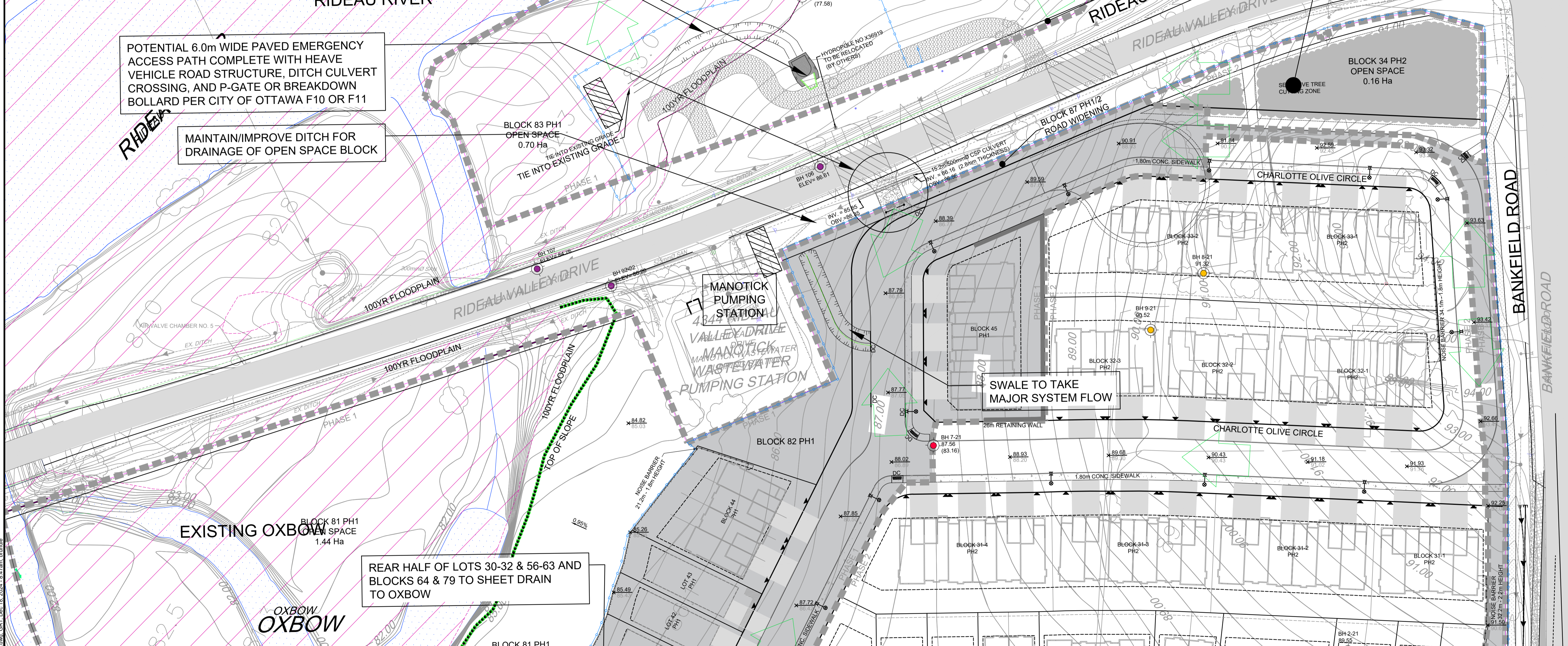
EROSION AND SEDIMENT CONTROL NOTES:

- ALL EROSION AND SEDIMENT CONTROLS ARE TO BE INSTALLED TO THE SATISFACTION OF THE CITY OF OTTAWA AND MINISTRY OF ENVIRONMENT, CONSERVATION AND PARKS (MOECP), APPROPRIATE TO THE SITE CONDITIONS, PRIOR TO UNDERTAKING ANY SITE ALTERATIONS (FILLING, GRADING, REMOVAL OF VEGETATION, ETC.) AND DURING ALL PHASES OF SITE PREPARATION AND CONSTRUCTION IN ACCORDANCE WITH THE CURRENT BEST MANAGEMENT PRACTICES FOR EROSION AND SEDIMENT CONTROL, SUCH AS BUT NOT LIMITED TO INSTALLING SILTSACKS ACROSS MANHOLE/CATCHBASIN LIDS TO PREVENT SEDIMENTS FROM ENTERING STRUCTURES AND INSTALL AND MAINTAIN A LIGHT DUTY SILT FENCE BARRIER AS REQUIRED.
- TO PREVENT SURFACE EROSION FROM ENTERING THE STORM SYSTEM DURING CONSTRUCTION, SILTSACKS WILL BE PLACED UNDER ALL PROPOSED AND SURROUNDING CATCHBASINS AND MANHOLES. THE SILTSACKS WILL REMAIN IN PLACE UNTIL VEGETATION HAS BEEN ESTABLISHED AND CONSTRUCTION COMPLETE.
- CONTRACTOR IS TO INSTALL LIGHT DUTY SILT FENCE AS PER OPSD 219.110. CONTRACTOR SHALL MAINTAIN SILT FENCE FOR THE DURATION OF THE CONTRACT.
- CONTRACTOR IS TO INSTALL STRAW BALES AS PER OPSD 219.180 AS INDICATED AND DIRECTED BY THE ENGINEER PRIOR TO THE COMMENCEMENT OF CONSTRUCTION.
- ALL AREAS DISTURBED BY CONSTRUCTION ARE TO BE TREATED WITH IMPORTED TOPSOIL, SEED AND MULCH.
- THE CONTRACTOR ACKNOWLEDGES THAT FAILURE TO IMPLEMENT EROSION AND SEDIMENT CONTROL MEASURES MAY BE SUBJECT TO PENALTIES IMPOSED BY ANY APPLICABLE REGULATORY AGENCY.
- ALL STREETS ARE TO BE SWEEPED ONCE ROADWAYS ARE PAVED AND TO CONTINUE FOR THE DURATION OF CONSTRUCTION ACTIVITY. STREETS ARE TO BE SWEEPED REGULARLY AS INDICATED BY THE ENGINEER.
- THE CONTRACTOR SHALL KEEP MATERIAL FOR ADDITIONAL EROSION AND SEDIMENT CONTROLS ON-SITE AT ALL TIMES. THESE MATERIALS INCLUDE BUT ARE NOT LIMITED TO: SILT FENCES, STRAW BALES, SEDIMENT BAGS AND CLEAR STONE. A CONTINGENCY PLAN TO INCLUDE THE PROVISION OF ADDITIONAL LABOUR, EQUIPMENT OR MATERIALS TO INSTALL ADDITIONAL CONTROL MEASURES, AS WELL AS PROVIDE AN EMERGENCY RESPONSE PLAN IN CASE OF AN ACCIDENTAL EVENT. AS SUCH, THE CONTRACTORS SHALL HAVE ADDITIONAL CONTROL MEASURES ON-SITE AT ALL TIMES WHICH ARE EASILY ACCESSIBLE AND MAY BE IMPLEMENTED AT A MOMENT'S NOTICE.
- MUD MATS ARE TO BE INSTALLED AND MAINTAINED AT CONSTRUCTION ACCESS POINTS TO MINIMIZE SEDIMENT TRANSFER TO EXISTING ROADWAYS (SEE MUD MAT DETAIL).
- COORDINATE ALL WORK WITH THE OWNER AND CONTRACT ADMINISTRATOR

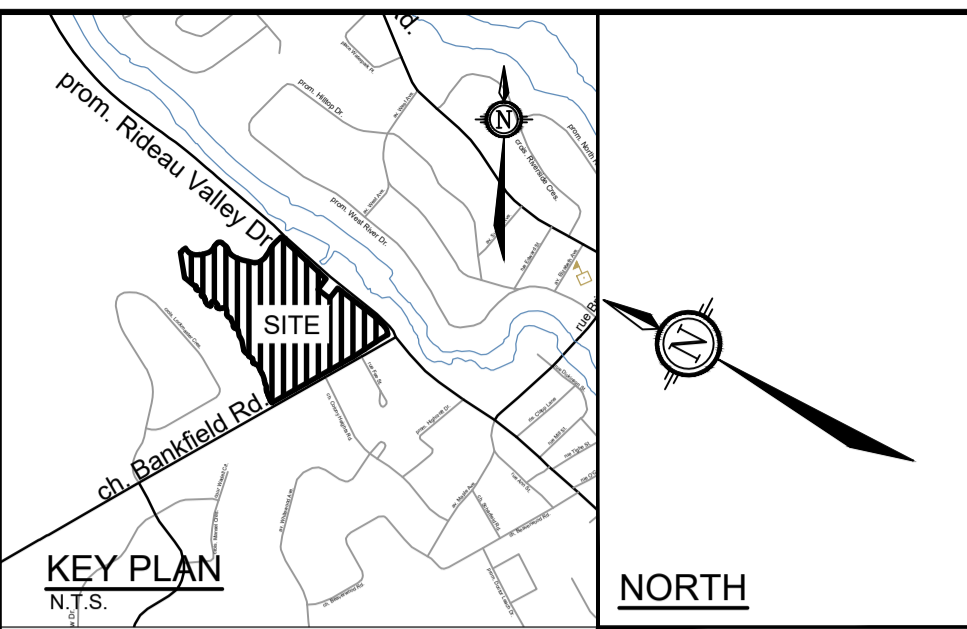
LEGEND

- x 89.85 PROPOSED ELEVATION
- x 87.72 EXISTING ELEVATION
- EMERGENCY OVERLAND FLOW
- LIGHT DUTY SILT FENCE BARRIER AS PER OPSD 219.110
- TEMPORARY LIGHT-DUTY STRAW BALE BARRIER AS PER OPSD 219.180
- FLOODPLAIN
- Top of Slope (AOV, Matrix)
- New Top of Slope (Novatech)
- Existing Gravel Shoulder
- Existing Paved Shoulder
- Existing Ditch

KEY PLAN
N.T.S.



SEE DRAWING No. 121153-GR1



LEGEND

	PROPOSED ELEVATION		FLOODPLAIN
	EXISTING ELEVATION		Top of Slope (AOV, Matrix)
	EMERGENCY OVERLAND FLOW		New Top of Slope (Novatech)
	LIGHT DUTY SILT FENCE BARRIER AS PER OPSD 219.110		Existing Gravel Shoulder
	TEMPORARY LIGHT-DUTY STRAW BALE BARRIER AS PER OPSD 219.180		Existing Paved Shoulder
			Existing Ditch

REAR HALF OF LOTS 30-32 & 56-63 AND BLOCKS 64 & 79 TO SHEET DRAIN TO OXBOW

BLOCK 81 PH1 OPEN SPACE 1.44 Ha

BLOCK 80 PH1 OPEN SPACE 2.87 Ha

BLOCK 79 PH1 EDMUND STINSON PARK 0.24 Ha

BLOCK 80 PH1 OPEN SPACE 2.87 Ha

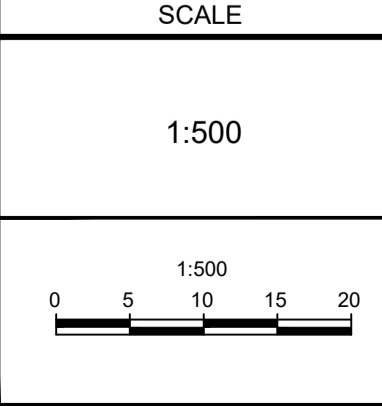
REAR HALF OF LOTS 1-29 TO SHEET DRAIN TO WILSON COWAN DRAIN

REFER TO 121153-GR1 FOR EROSION AND SEDIMENT CONTROL NOTES

M:\2024\121153\CAD\Design\121153-GR_V3.dwg, GR2, Dec 18, 2024, 8:47 am, bundle

NOTE:
THE POSITION OF ALL POLE LINES, CONDUITS, WATERMANS, SEWERS AND OTHER UNDERGROUND AND OVERGROUND UTILITIES AND STRUCTURES IS NOT NECESSARILY SHOWN ON THE CONTRACT DRAWINGS, AND WHERE SHOWN, THE ACCURACY OF THE POSITION OF SUCH UTILITIES AND STRUCTURES IS NOT GUARANTEED. BEFORE STARTING WORK, DETERMINE THE EXACT LOCATION OF ALL SUCH UTILITIES AND STRUCTURES AND ASSUME ALL LIABILITY FOR DAMAGE TO THEM.

No.	REVISION	DATE	BY
6.	ISSUED FOR PH 2 REVIEW	JUN 18/26	BHB
5.	ISSUED FOR RE-SUBMISSION REVIEW	MAR 3/25	BHB
4.	ISSUED FOR RE-SUBMISSION REVIEW	DEC 13/24	BHB
3.	ISSUED FOR RE-SUBMISSION REVIEW	OCT 23/24	BHB
2.	ISSUED FOR RE-SUBMISSION REVIEW	APR 11/24	BHB
1.	ISSUED FOR REVIEW	JAN 6/23	BHB



DESIGN	FOR REVIEW ONLY
BPR	
CHECKED	
BHB	
DRAWN	
BPR	
CHECKED	
BHB	
APPROVED	
BHB	

NOVATECH
Engineers, Planners & Landscape Architects
Suite 200, 240 Michael Cowpland Drive
Ottawa, Ontario, Canada K2M 1R6
Telephone: (613) 254-9643
Facsimile: (613) 254-5867
Website: www.novatech-eng.com

LOCATION CITY OF OTTAWA STINSON LANDS SUBDIVISION	PROJECT No. 121153-00
DRAWING NAME CONCEPTUAL GRADING, EROSION, & SEDIMENT CONTROL PLAN	REV # REV
	DRAWING No. 121153-GR2