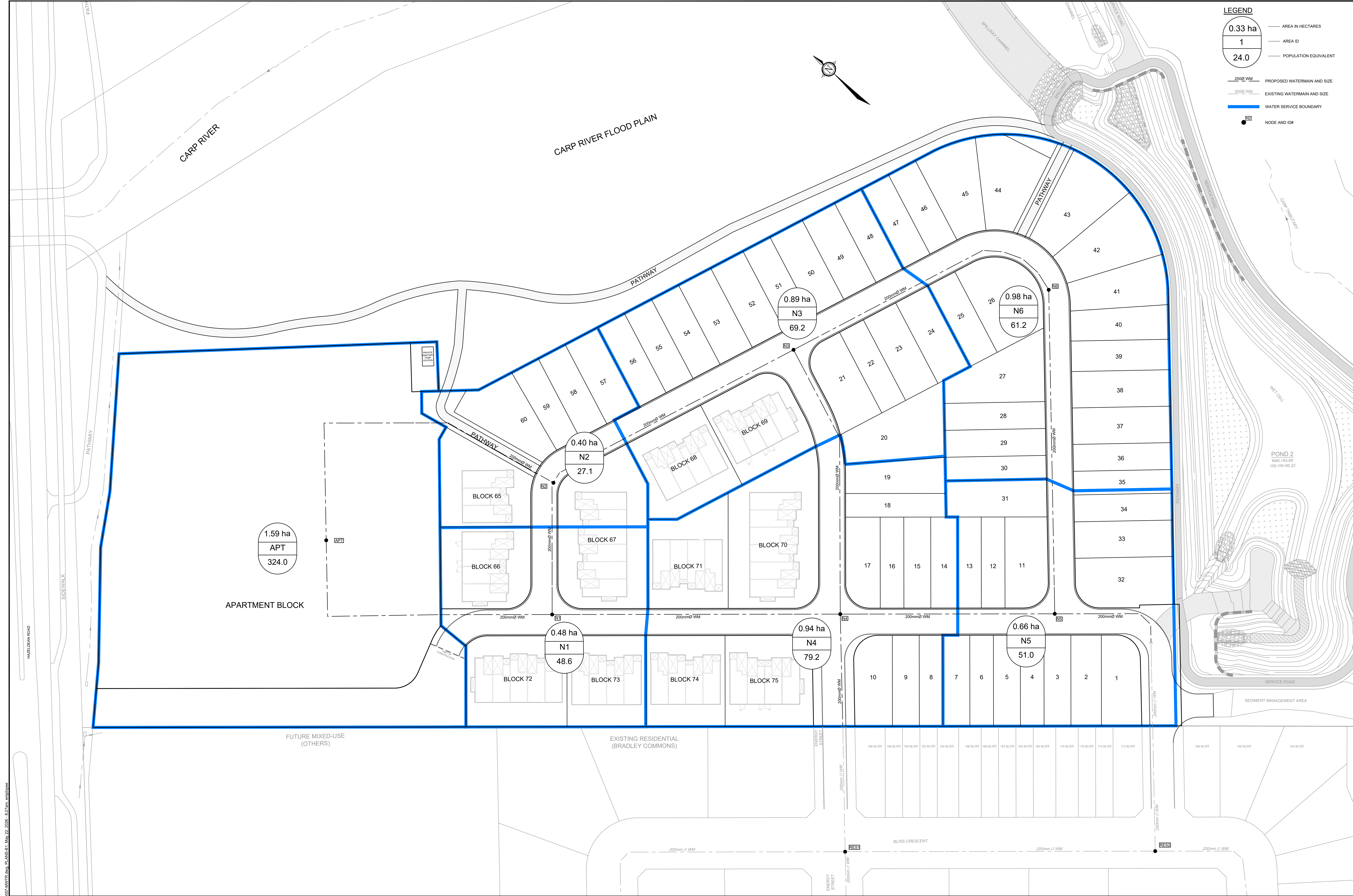
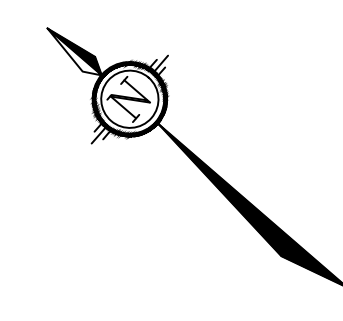


**LEGEND**

- 0.33 ha — AREA IN HECTARES
- 1 — AREA ID
- 24.0 — POPULATION EQUIVALENT
- 200mm WM — PROPOSED WATERMAIN AND SIZE
- 200mm WM — EXISTING WATERMAIN AND SIZE
- WATER SERVICE BOUNDARY
- N1 — NODE AND ID#



**NOTE:**  
 THE POSITION OF ALL POLE LINES, CONDUITS, WATERMANS, SEWERS AND OTHER UNDERGROUND AND OVERGROUND UTILITIES AND STRUCTURES IS NOT NECESSARILY SHOWN ON THE CONTRACT DRAWINGS, AND WHERE SHOWN, THE ACCURACY OF THE POSITION OF SUCH UTILITIES AND STRUCTURES IS NOT GUARANTEED. BEFORE STARTING WORK, DETERMINE THE EXACT LOCATION OF ALL SUCH UTILITIES AND STRUCTURES AND ASSUME ALL LIABILITY FOR DAMAGE TO THEM.

No.	REVISION	DATE	BY
3	DP COMMENT RESOLUTION	MAY 22/26	MAB
2	DP COMMENT RESOLUTION	JAN 20/26	MAB
1	DRAFT PLAN APPLICATION	AUG 15/25	MAB

SCALE

1:500

**FOR REVIEW ONLY**

DESIGN	LRW
CHECKED	MAB
DRAWN	DTD
CHECKED	MAB
APPROVED	MAB

**NOVATECH**  
 Engineers, Planners & Landscape Architects  
 Suite 200, 240 Michael Cowpland Drive  
 Ottawa, Ontario, Canada K2M 1P6  
 Telephone: (613) 254-9643  
 Facsimile: (613) 254-5867  
 Website: www.novatech-eng.com

CITY OF OTTAWA - 560 HAZELDEAN ROAD  
 DOUBLE DECK SUBDIVISION

**WATER DISTRIBUTION PLAN**

PROJECT No: 100057-05  
 REV: REV # 3  
 DRAWING No: 100057-WTR

C:\0001\100057\Subdivision\CAD\Drawings\100057-WTR.dwg, PLANS-B1, May 22, 2026 - 8:27am, employee