

- LEGEND**
- 3-D1 DETAIL SHEET # NOVATECH OR CITY DETAIL NUMBER SEE LIST FOR CODE
 - PROPERTY LIMIT
 - SEED
 - SHRUB RENATURALIZATION
 - PROPOSED CALIPER DECIDUOUS TREE
 - PROPOSED CALIPER CONIFEROUS TREE
 - QUANTITY SPECIES (SEE PLANT LIST)
 - 3 QR TREE PROTECTION FENCE
 - PROPOSED TURTLE/CHAINLINK FENCE
 - NOISE BARRIER 1.8m HT.

- NOVATECH DETAILS**
- Found on Sheet L2.
- D1. Standard Deciduous Tree Planting
 - D2. Standard Coniferous Tree Planting
 - D3. Shrub Renaturalization
 - D4. Tree Protection Fence
 - D5. Chainlink and Turtle Fencing
 - D6. Alcur Noise Barrier 1.8m HT.

- GENERAL**
- Read and interpret this drawing/ drawing set in conjunction with all the contract details and specifications, including related civil, utility, structural, architectural, mechanical, electrical, environmental, geotechnical, and survey information.
 - The Contractor is to determine the exact location, size, material, and elevation of all existing utilities prior to commencing construction. Protect and assume responsibility for all existing utilities regardless of being shown on the drawings.
 - It is essential to use the plans and details in conjunction with the specifications and notes.
 - Do not scale drawings. Work to dimensions only.
 - Protect all existing and retained vegetation for the duration of construction according to the contract details and specifications.
 - Reinstate all areas and items damaged or disturbed, beyond the Limit of Work, because of construction activities, including but not limited to construction staging areas, haul roads, stockpile areas, etc. to the satisfaction of the Consultant. Unless otherwise noted, Contractor is to reinstate all areas to pre-construction condition or better to the satisfaction of the Contract Administrator.
- PLANTING**
- Plant material to be No. 1 Grade and is to comply with Canadian Standards for Nursery Stock (latest edition) published by the Canadian Nursery Landscape Association.
 - Use structurally sound plant material with strong fibrous root system free of disease, defects, and injuries. Use trees with straight trunks, well and characteristically branched for species. Obtain approval from consultant of plant material at source prior to digging. All trees and shrubs to be container grown, potted, W/B or B/B, as indicated on Plant List. Bare root plants are only acceptable for certain species and as approved by the Landscape Architect.
 - Plant material substitutions are not permitted without the written approval from the Consultant, with 48 hours notice, prior to shipping plant material.
 - Plant locations are schematic / approximate only. Contractor is to stake out locations on site for approval by the Landscape Architect prior to installation. Contractor will assume full responsibility if the Landscape Architect is not notified.
 - The illustrated number of plants shown in the Planting Plan supersedes the estimated number in the Plant List. Contractor to report any discrepancies to the Landscape Architect prior to installation. Contractor will assume full responsibility if the Landscape Architect is not notified.
 - Ensure trees are thoroughly watered following planting. Monitor material and ensure adequate moisture until acceptance.
 - In heavy clay or poorly drained soils, set root ball with root collar 75-100mm higher than finished grade.
 - Approved topsoil depths are as follows:
 - a. Plant Beds - 450mm continuous depth. Applies to shrubs, perennials, vines, and groundcovers.
 - b. Sod/ Seed Areas - 100mm depth.
 - c. Reforestation - 300mm depth.
 - Sod to be No. 1 Kentucky Bluegrass Sod grown from minimum mixture of 3 Kentucky Bluegrass cultivars. Quality and source are to comply with Canadian Standards for Nursery Stock, Section 17, (latest edition) published by the Canadian Nursery Landscape Nursery Landscape Association.
 - Apply the following mineral fertilizer unless soil tests show other requirements:
 - a. Plant Beds - (8-32-16), i.e. 8% Nitrogen, 32% Phosphorus, 16% Potash per manufacturer specifications.
 - b. Sod Areas - (8-32-16), i.e. 8% Nitrogen, 32% Phosphorus, 16% Potash at a rate of 350kg/ha.
 - Where applicable, for any plant areas with a mix of species/ cultivars notes, Contractor is to cluster like plants in groups of 3-5 and evenly distribute these in the noted area.

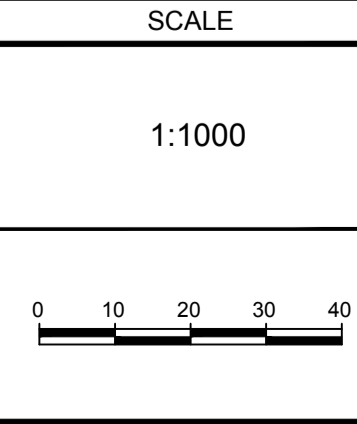
PLANT LIST

KEY	QTY	BOTANICAL NAME	COMMON NAME	SIZE	COND	SPACING
Coniferous Trees						
LL	6	<i>Larix laricina</i>	Tamarack	200cm HT	WB	As Shown
PG	12	<i>Picea glauca</i>	White Spruce	200cm HT	WB	As Shown
PNS	11	<i>Pinus strobus</i>	Eastern White Pine	200cm HT	WB	As Shown
Deciduous Trees						
ASI	4	<i>Acer saccharinum</i>	Silver Maple	50mm Cal	WB	As Shown
AES	4	<i>Acer saccharum</i>	Sugar Maple	50mm Cal	WB	As Shown
BAL	1	<i>Betula alleghaniensis</i>	Yellow Birch	50mm Cal	WB	As Shown
CCL	3	<i>Carpinus caroliniana</i>	American Hornbeam, Muscledwood, Ironwood	50mm Cal	WB	As Shown
CCY	3	<i>Carya cordiformis</i>	Bitternut Hickory	50mm Cal	PT	As Shown
JN	4	<i>Juglans nigra</i>	Black Walnut	50mm Cal	WB	As Shown
OV	3	<i>Ostrya virginiana</i>	Hop-hornbeam, Ironwood	50mm Cal	WB	As Shown
QM	3	<i>Quercus macrocarpa</i>	Burr Oak	50mm Cal	WB	As Shown
QR	7	<i>Quercus rubra</i>	Red Oak	50mm Cal	WB	As Shown
121153 - Renaturalization Mix (Rmix)						
%	QTY	BOTANICAL NAME	COMMON NAME	SIZE	COND	SPACING
Deciduous + Coniferous Shrubs						
8%	50	<i>Ilex melanocarpa</i>	Black Chokeberry	0.60m HT	PT	2.0m O.C.
5%	31	<i>Cephalanthus occidentalis</i>	Butterbush	0.60m HT	PT	2.0m O.C.
10%	61	<i>Cornus racemosa</i>	Grey Dogwood	0.60m HT	PT	2.0m O.C.
5%	31	<i>Myrica pensylvanica</i>	Bayberry	0.60m HT	PT	2.0m O.C.
14%	86	<i>Rhus typhina</i>	Staghorn Sumac	0.60m HT	PT	2.0m O.C.
5%	31	<i>Rubus occidentalis</i>	Black Raspberry	0.60m HT	PT	2.0m O.C.
15%	92	<i>Thuja occidentalis</i>	Eastern White Cedar	0.60m HT	PT	2.0m O.C.
5%	31	<i>Salix bebbiana</i>	Barked Willow	0.60m HT	PT	2.0m O.C.
8%	50	<i>Salix petiolaris</i>	Slender Willow	0.60m HT	PT	2.0m O.C.
5%	31	<i>Sorbus decora</i>	Shovoy Mountain-Ash	0.60m HT	PT	2.0m O.C.
10%	61	<i>Symphoricarpos alba</i>	Snowberry	0.60m HT	PT	2.0m O.C.
10%	61	<i>Viburnum lentago</i>	Nannyberry	0.60m HT	PT	2.0m O.C.
100%	616					

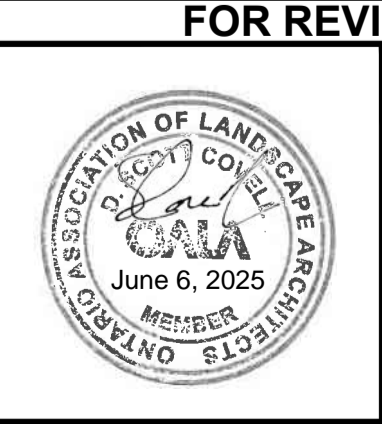
NOTE:
THE POSITION OF ALL POLE LINES, CONDUITS,
WATERMAINS, SEWERS AND OTHER
UNDERGROUND AND OVERGROUND UTILITIES AND
STRUCTURES IS NOT NECESSARILY SHOWN ON
THE CONTRACT DRAWINGS, AND WHERE SHOWN,
THE ACCURACY OF THE POSITION OF SUCH
UTILITIES AND STRUCTURES IS NOT GUARANTEED.
BEFORE STARTING WORK, DETERMINE THE EXACT
LOCATION OF ALL SUCH UTILITIES AND
STRUCTURES AND ASSUME ALL LIABILITY FOR
DAMAGE TO THEM.

NOT FOR
CONSTRUCTION

No.	REVISION	DATE	BY
3.	REVISED PER CITY COMMENTS	JUN 6/2025	SC
2.	ISSUED FOR CITY REVIEW	APR 29/2025	SC
1.	ISSUED FOR CLIENT REVIEW	DEC 16/2024	SC



DESIGN	JMK
CHECKED	SC
DRAWN	JMK
CHECKED	SC
APPROVED	SC



FOR REVIEW ONLY

NOVATECH
Engineers, Planners & Landscape Architects
Suite 200, 240 Michael Cowpland Drive
Ottawa, Ontario, Canada K2M 1P6
Telephone (613) 254-9643
Facsimile (613) 254-5867
Website www.novatech-eng.com

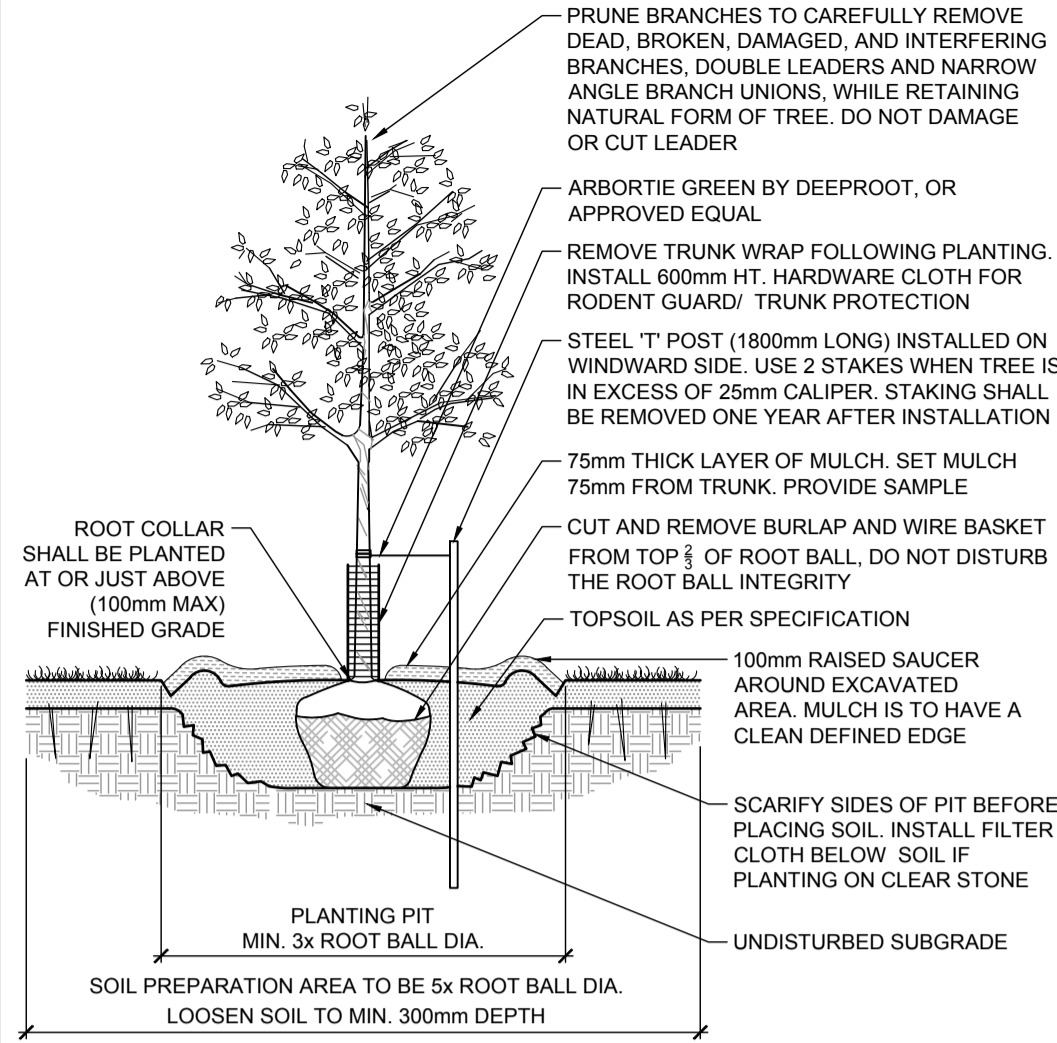
LOCATION CITY OF OTTAWA - STINSON LANDS 4386 RIDEAU VALLEY DRIVE		PROJECT NO.	121153
DRAWING NAME RENATURALIZATION PLAN FOR BLOCKS 49, 50 & 51		REV	REV # 3
		DRAWING NO.	121153-L1

C:\temp\p\p\121153_CP18_renaturalization.dwg, L1: Renaturalization, Jun 09, 2025 - 3:50pm, mlsat

PLANTING PLAN

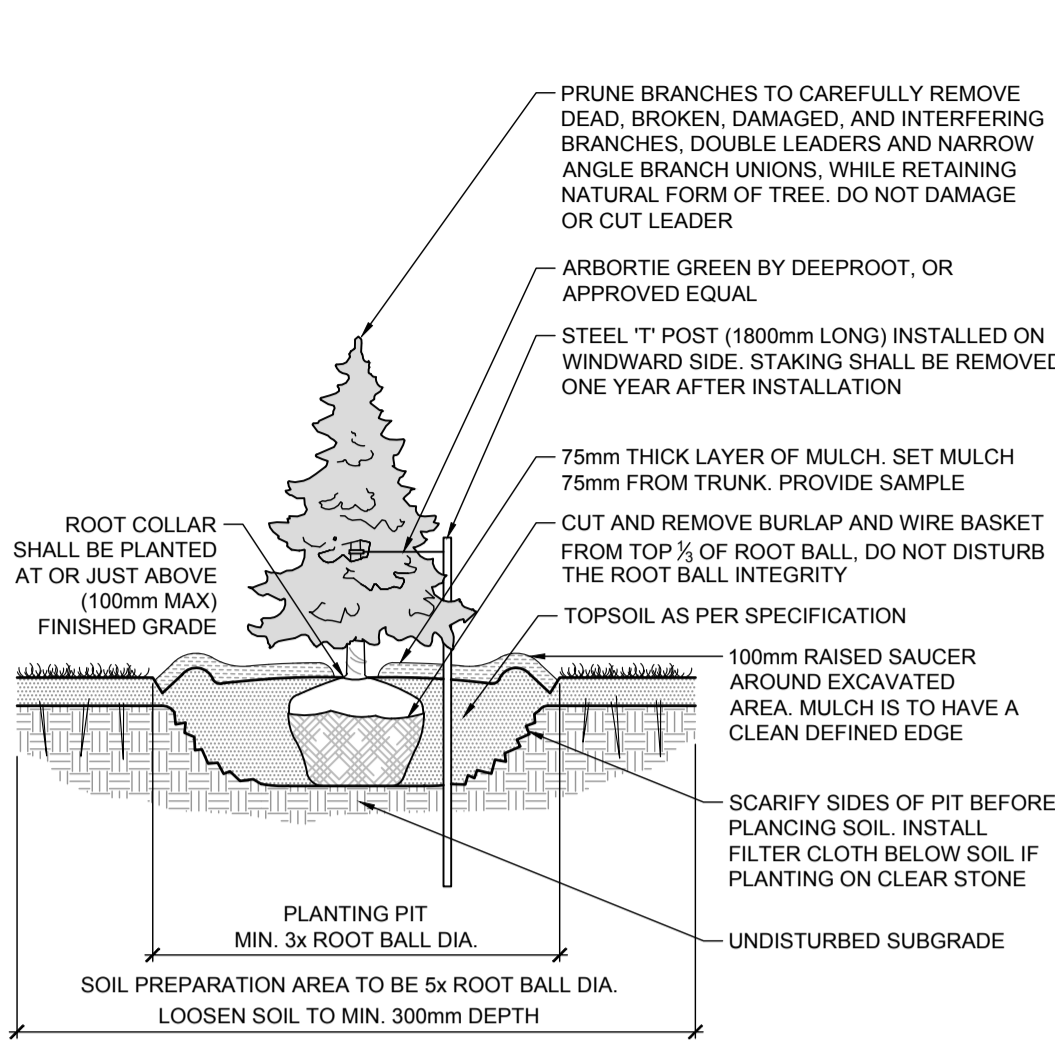
#00000

D07-16-22-0026



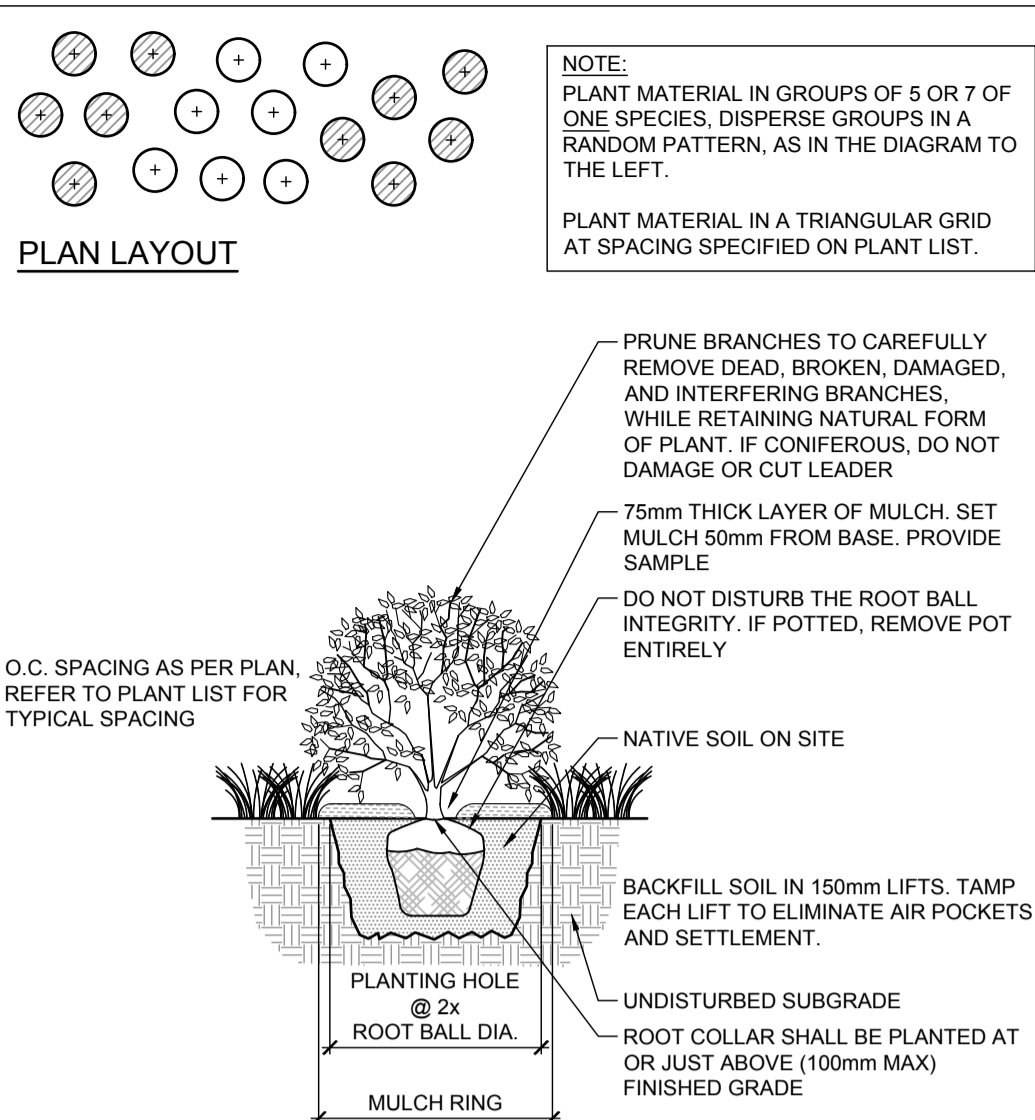
STANDARD DECIDUOUS TREE PLANTING

D1



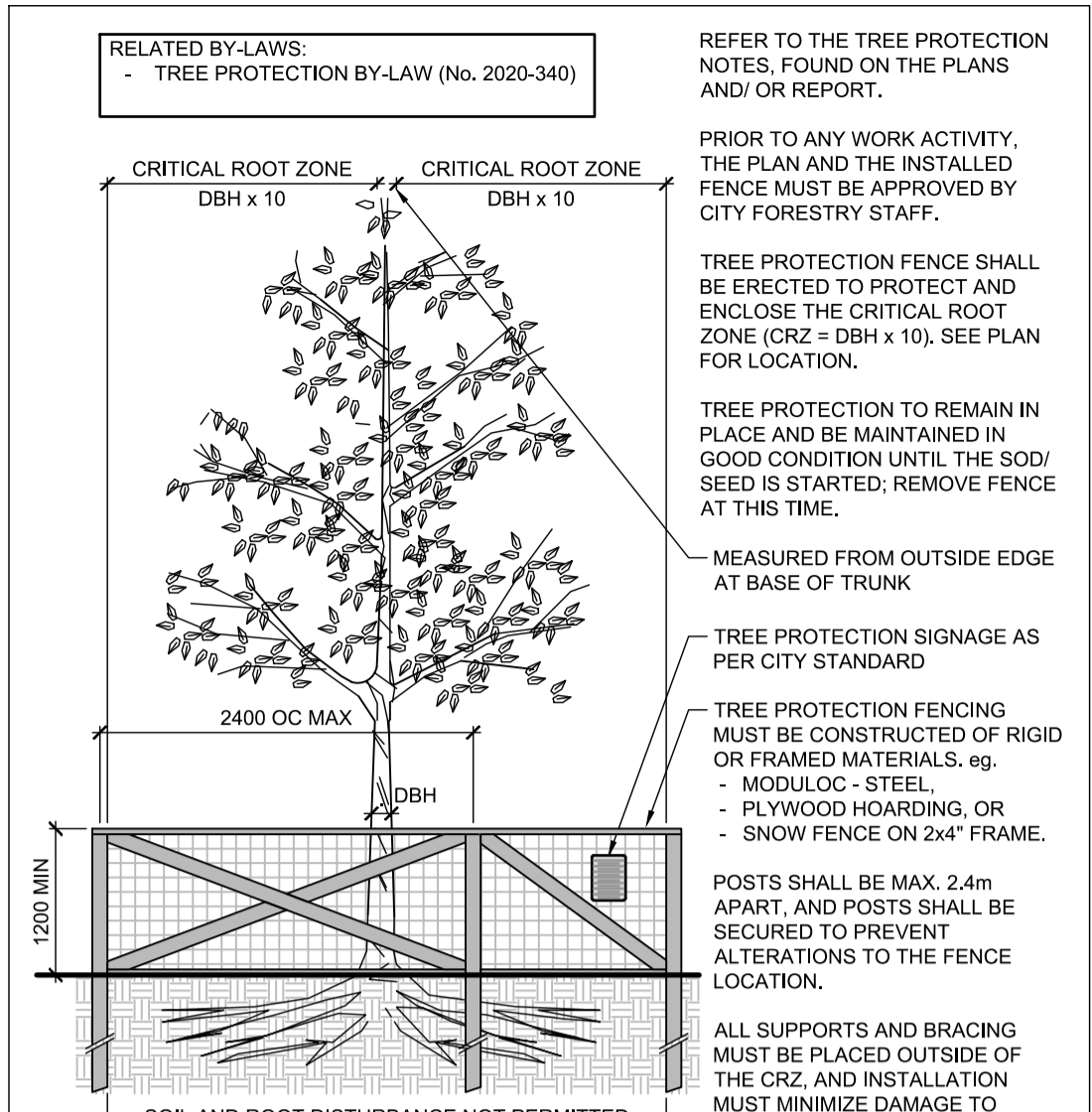
STANDARD CONIFEROUS TREE PLANTING

D2



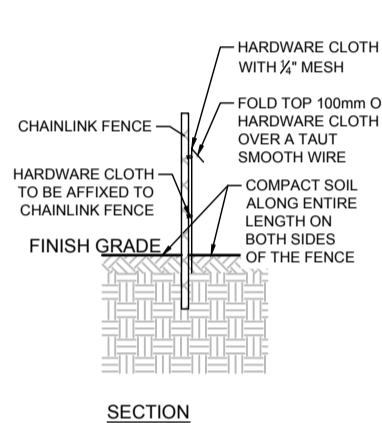
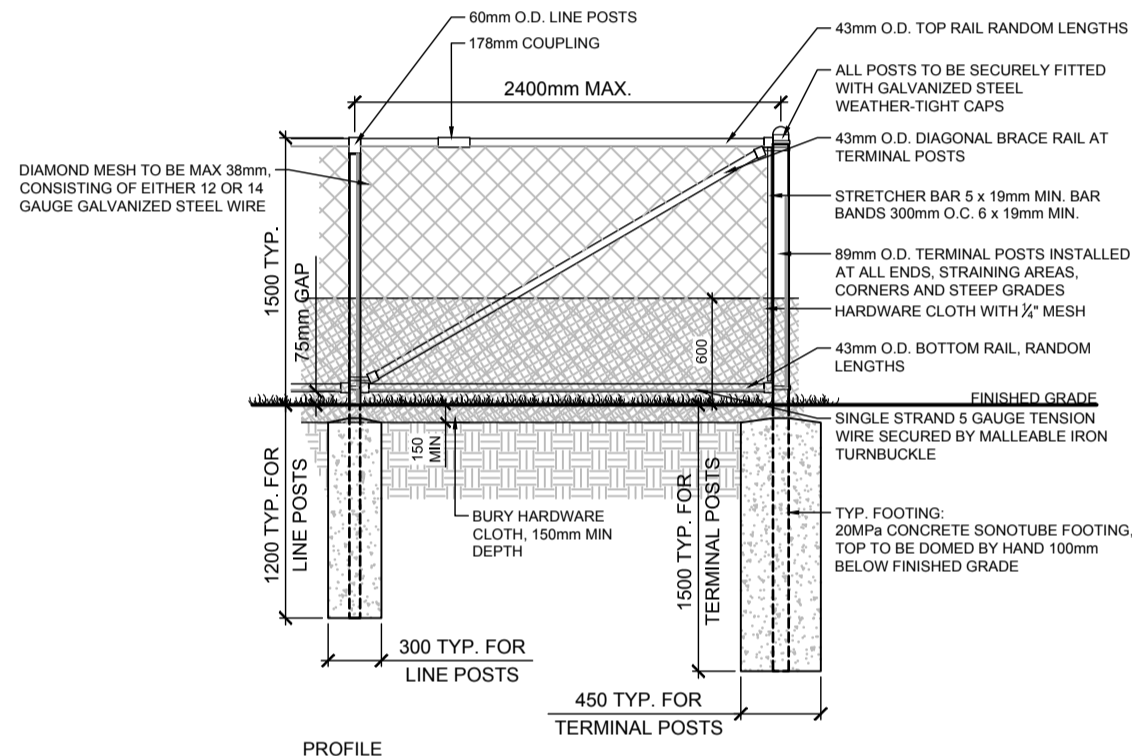
SHRUB RENATURALIZATION PLANTING

D3



TREE PROTECTION FENCE

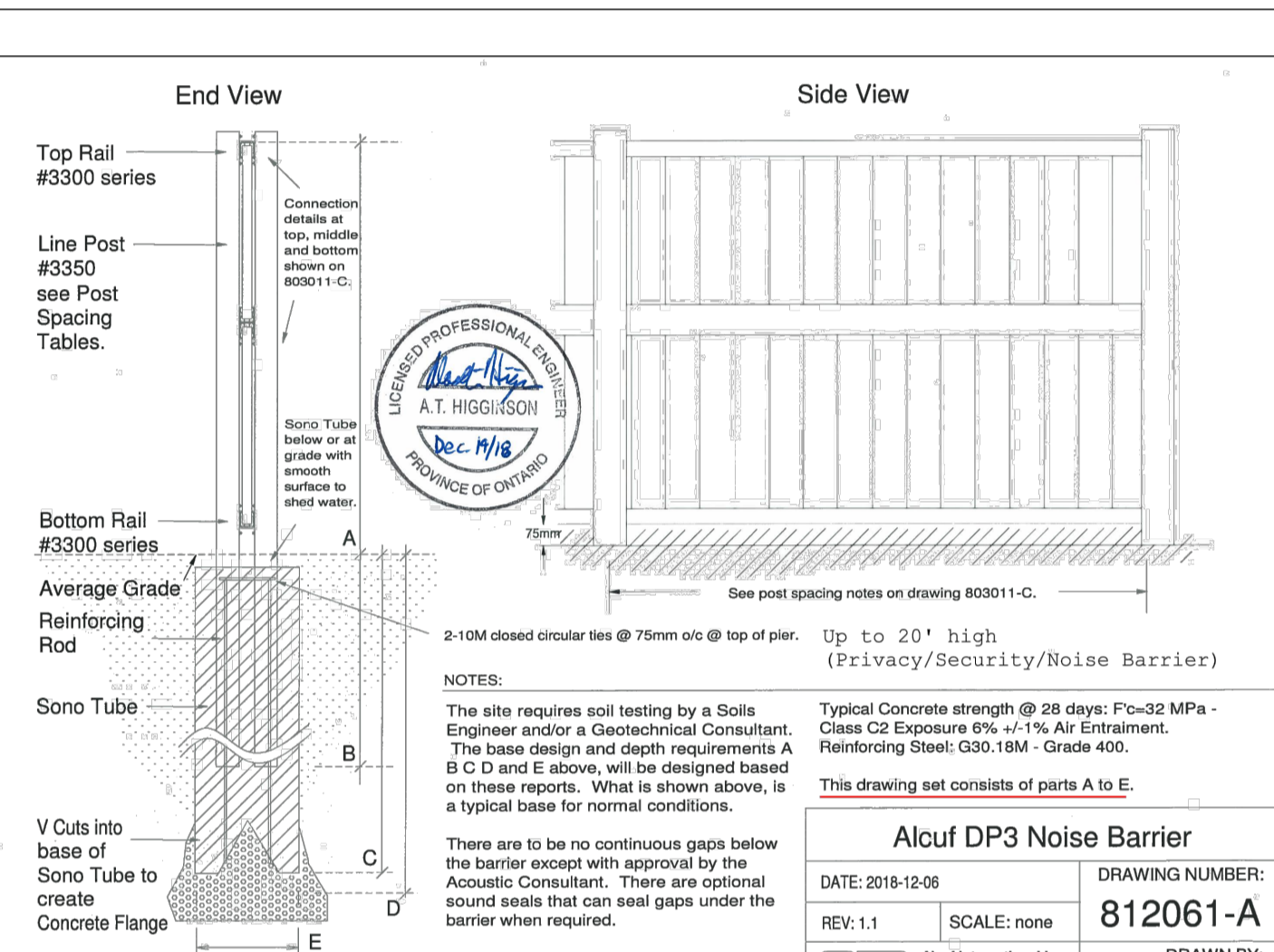
D4



- NOTES:
1. FOR INSTALL, PULL HARDWARE CLOTH TAUT AND SECURE.
 2. MARK TOP EDGE WITH FLAGGING TAPE EVERY 4m INTERVAL OR ON SEGMENTS BETWEEN POSTS.
 3. IF NEEDED, HARDWARE CLOTH TEARS CAN BE MENDED WITH 18-GAUGE GALVANIZED WIRE.
 4. ALL FENCE COMPONENTS SHALL BE GALVANIZED. NO PLASTIC FITTINGS OR COMPONENTS ARE TO BE USED.
 5. ALL FENCE POSTS AND PIPE TO BE SCHEDULE 40" PIPE.
 6. CHAINLINK FABRIC TO HAVE FOLDED EDGES TOP AND BOTTOM, TO BE FASTENED TO TOP RAIL, BRACE RAIL, LINE POST, STRETCHER BAR AND TENSION WIRE WITH 3.5 GAUGE GALVANIZED WIRE AT 450 O.C. AVERAGE MASS OF ZINC COATING TO BE NOT LESS THAN 610g/m² OF UNCOATED WIRE.
 7. CONTRACTOR TO ENSURE THAT THE FENCE MESH IS SAFE, SUFFICIENTLY TENSIONED AND SECURELY FASTENED AND THAT THE FENCE IS COMPLETED TO THE HIGHEST INDUSTRY STANDARD.
 8. ALL DIMENSIONS ARE IN MILLIMETRES.
 9. REFER TO SPECIFICATIONS.

CHAINLINK AND TURTLE FENCING

D5



ALCUF NOISE BARRIER

D6

NOTE:
THE POSITION OF ALL POLE LINES, CONDUITS, WATERMANS, SEWERS AND OTHER UNDERGROUND AND OVERGROUND UTILITIES AND STRUCTURES IS NOT NECESSARILY SHOWN ON THE CONTRACT DRAWINGS, AND WHERE SHOWN, THE ACCURACY OF THE POSITION OF SUCH UTILITIES AND STRUCTURES IS NOT GUARANTEED. BEFORE STARTING WORK, DETERMINE THE EXACT LOCATION OF ALL SUCH UTILITIES AND STRUCTURES AND ASSUME ALL LIABILITY FOR DAMAGE TO THEM.

NOT FOR CONSTRUCTION

No.	REVISION	DATE	BY
3.	REVISED PER CITY COMMENTS	JUN 6/2025	SC
2.	ISSUED FOR CITY REVIEW	APR 29/2025	SC
1.	ISSUED FOR CLIENT REVIEW	DEC 16/2024	SC

SCALE

DESIGN

JMK

CHECKED

SC

DRAWN

JMK

CHECKED

SC

APPROVED

SC

FOR REVIEW ONLY



NOVATECH

Engineers, Planners & Landscape Architects
Suite 200, 240 Michael Cowpland Drive
Ottawa, Ontario, Canada K2M 1P6

Telephone (613) 254-9643
Facsimile (613) 254-5867
Website www.novatech-eng.com

LOCATION
CITY OF OTTAWA - STINSON LANDS
4386 RIDEAU VALLEY DRIVE

DRAWING NAME
DETAILS -
RENATURALIZATION PLAN
FOR BLOCKS 49, 50 & 51

PROJECT No.
121153

REV
REV # 3

DRAWING No.
121153-L2

#00000