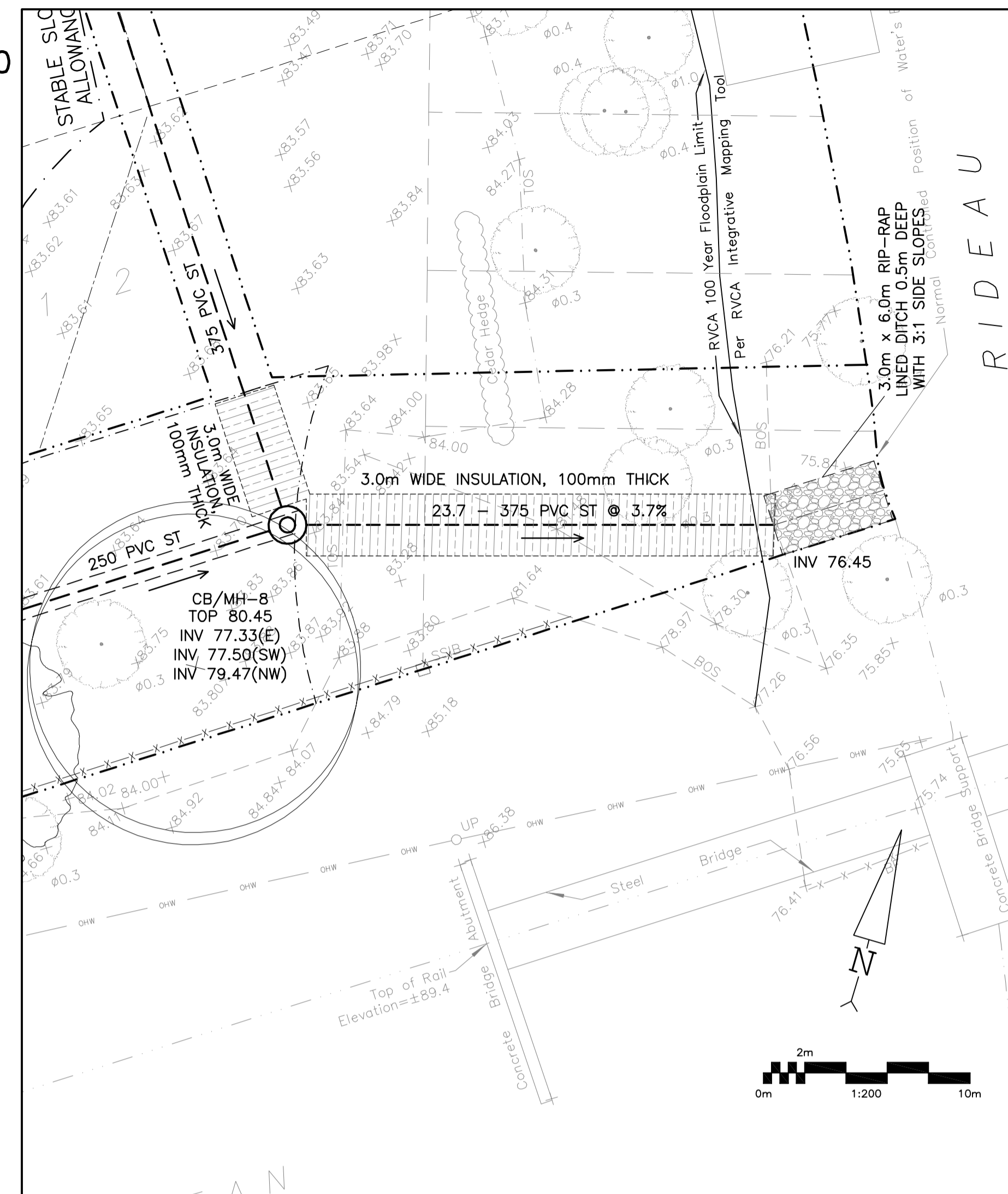


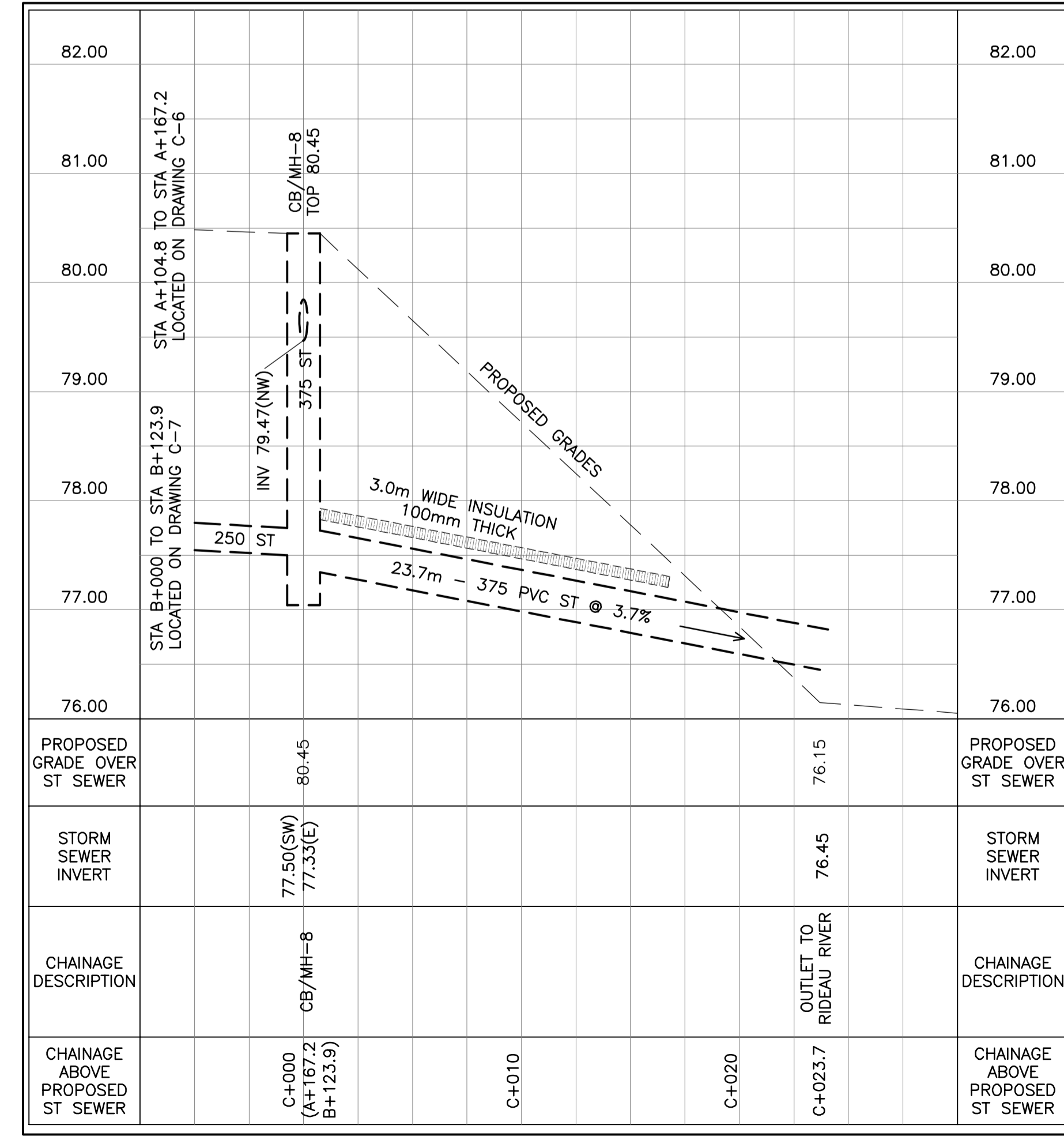
REFER TO NOTES, DETAILS & SCHEDULES ON DRAWINGS C-9 & C-10



**LEGEND**

- F.F.L. FINISHED FLOOR ELEVATION
- T.O.F. TOP OF FOUNDATION
- B.F.L. BASEMENT FLOOR ELEVATION
- U.S.F. UNDERSIDE OF FOOTING
- PROPERTY LINE
- C.R.Z. CRITICAL ROOT ZONE
- CB CATCH-BASIN
- MH STORM MANHOLE
- CB/MH CATCH-BASIN/MANHOLE
- MH SANITARY MANHOLE
- VC VALVE CHAMBER
- FH FIRE HYDRANT
- VB VALVE & VALVE BOX
- SAN SANITARY SEWER
- ST STORM SEWER
- WS/WM WATER SERVICE/WATERMAN
- SPL SPRINGLINE OF PIPE
- INV INVERT OF PIPE
- T.O.S. TOP OF SLOPE
- B.O.S. BOTTOM OF SLOPE
- CENTERLINE OF SWALE
- 150mm BARRIER CURB
- D.C. DEPRESSED CURB
- ROAD CUT REINSTATEMENT

**KEY PLAN**



| No. | DATE      | REVISION               |
|-----|-----------|------------------------|
| 2   | APR 14-25 | RE-ISSUED FOR APPROVAL |
| 1   | JAN 28-25 | RE-ISSUED FOR APPROVAL |

**D. B. GRAY ENGINEERING INC.**  
*Stormwater Management - Grading & Drainage - Storm & Sanitary Sewers - Watermain*  
 700 Long Point Circle 613-425-8044  
 Ottawa, Ontario d.gray@dbgrayengineering.com

Project  
**PROPOSED 7 LOT DEVELOPMENT**  
**2009-2013 PRINCE OF WALES DR**  
 OTTAWA, ONTARIO

Drawing Title  
**PLAN AND PROFILE**  
 STA C+000.0 TO C+023.7

Engineer's Seal  
  
 NOT VALID UNLESS SIGNED & DATED

Drawn D.B.G.  
 H. Scale 1:200  
 V. Scale 1:40  
 Date JUN 29-23  
 Job No. 22055

Drawing No.  
**C-8**  
 of 10