

PLANTING SCHEDULE								
KEY	QTY.	BOTANICAL NAME	COMMON NAME	CALIPER (mm)	SIZE (cm)	CONDITION/FORM	MIN. O.C. SPACING (m)	SPECIES %
Ab	2	<i>Abies balsamea</i>	Balsam fir	50		W.B. Standard tree form	5	7%
AbA	3	<i>Amelanchier × grandiflora 'Autumn Brilliance'</i>	Autumn brilliance serviceberry	50		W.B. Standard tree form	6	10%
Ap	3	<i>Acer pensylvanicum</i>	Striped maple	50		W.B. Standard tree form	8	21%
Ar	3	<i>Acer rubrum</i>	Red maple	50		W.B. Standard tree form	13	7%
Cc	2	<i>Carpinus caroliniana</i>	American hornbeam	50		W.B. Standard tree form	10	10%
CcC	3	<i>Crataegus crus-galli 'Cruzam'</i>	Crusader Cockspur thorn	50		W.B. Standard tree form	10	10%
Co	3	<i>Celtis occidentalis</i>	Common hackberry	50		W.B. Standard tree form	16	10%
Mi	3	<i>Malus 'Thunderchild'</i>	Thunderchild flowering crabapple	50		W.B. Standard tree form	6	10%
Pg	3	<i>Picea glauca</i>	White spruce	50		W.B. Standard tree form	5	10%
To	2	<i>Thuja occidentalis</i>	Eastern white cedar	50		W.B. Standard tree form	5	7%
Ps	1	<i>Pinus strobus</i>	Eastern white pine	50		W.B. Standard tree form	5	3%
Tc	1	<i>Tsuga canadensis</i>	Eastern hemlock	50		W.B. Standard tree form	5	3%
TOTAL:	29							100%

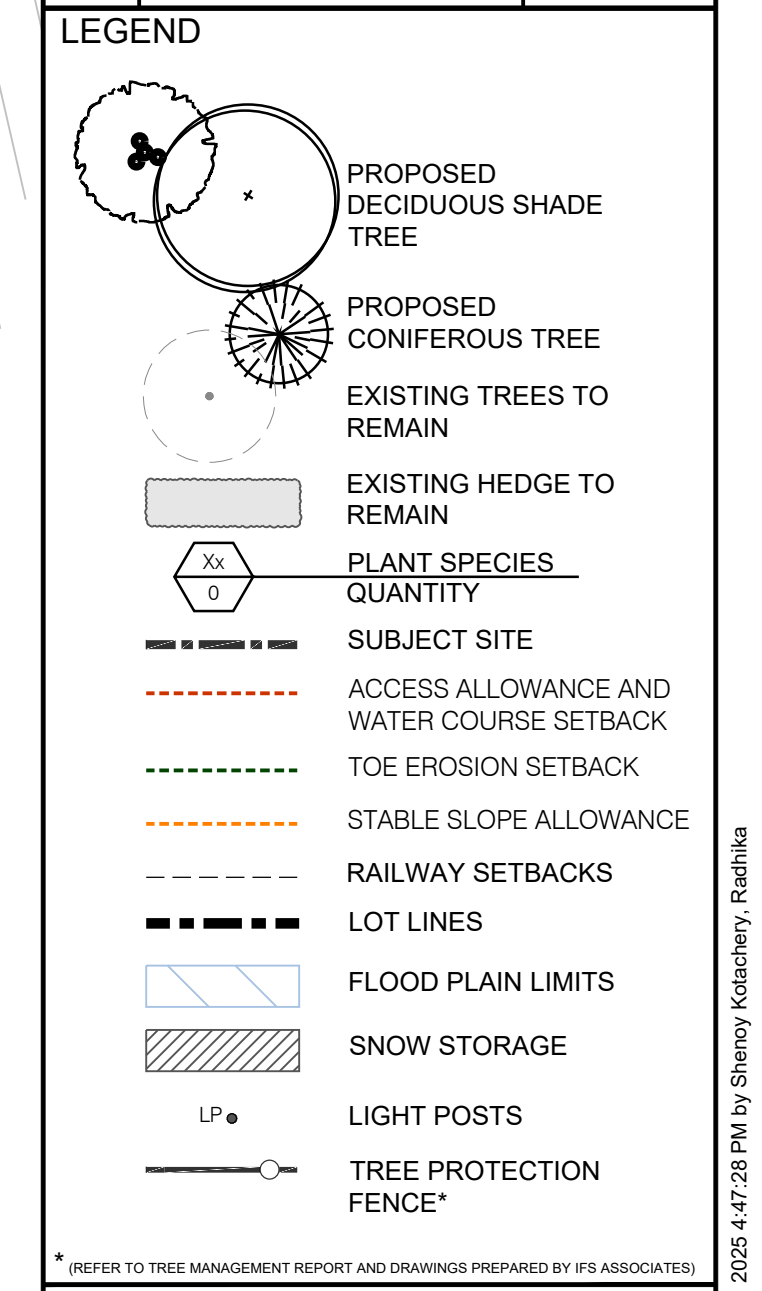
CLIENT
ALEX SIVASAMBU 7 LEAVER AVENUE

OTTAWA, ON K2E 5P5

COPYRIGHT
This drawing has been prepared solely for the intended use, thus any reproduction or distribution for any purpose other than authorized by Arcadis is forbidden. Written dimensions shall have precedence over scaled dimensions. Contractors shall verify and be responsible for all dimensions and conditions on the job, and Arcadis shall be informed of any variations from the dimensions and conditions shown on the drawing. Shop drawings shall be submitted to Arcadis for general conformance before proceeding with fabrication.

Arcadis Professional Services (Canada) Inc.
formerly B|G Group Professional Services (Canada) Inc.

ISSUES		
No.	DESCRIPTION	DATE
1	ISSUED FOR SPA	2024-07-25
2	ISSUED FOR SPA	2024-01-07
3	ISSUED FOR SPA	2025-02-06



NO ALTERATIONS WILL OCCUR IN THE WATERCOURSE SETBACK EXCEPT WHERE THE STORMWATER MANAGEMENT OUTLET IS INSTALLED. ALL WORK TO BE IN ACCORDANCE WITH THE ENVIRONMENTAL IMPACT STATEMENT PREPARED BY LRL ASSOCIATES SECTION 9.3. MITIGATION MEASURES AND COORDINATED WITH THE LANDSCAPE ARCHITECT

PRIME CONSULTANT
ARCADIS
410 Albert Street - Suite 101
Waterloo ON N2L 3V3 Canada
tel 519 585 2255
www.arcadis.com

PROJECT
2009/2013 PRINCE OF WALES
OTTAWA, ON

PROJECT NO:
143075

DRAWN BY:
R.S.

CHECKED BY:
M.P.

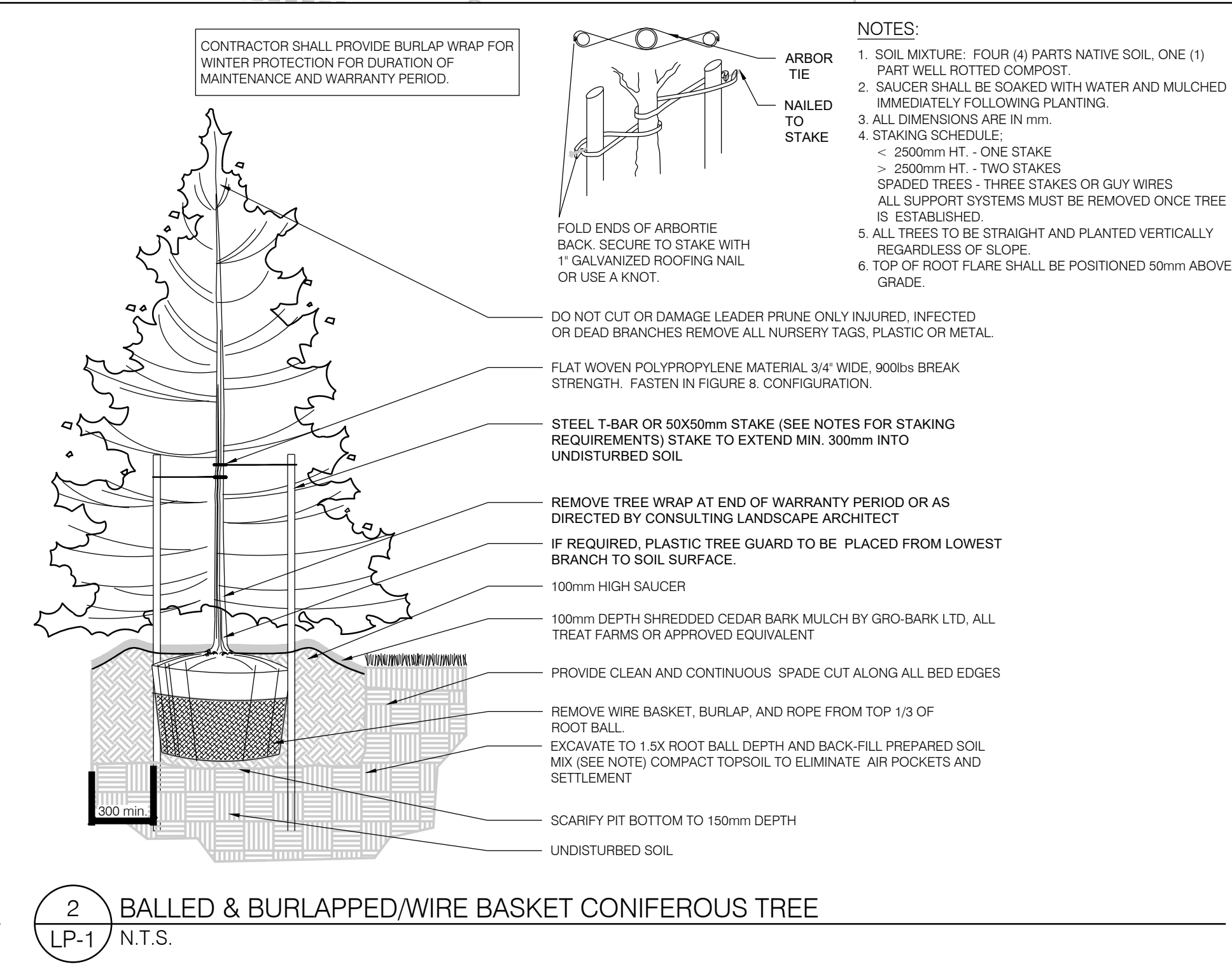
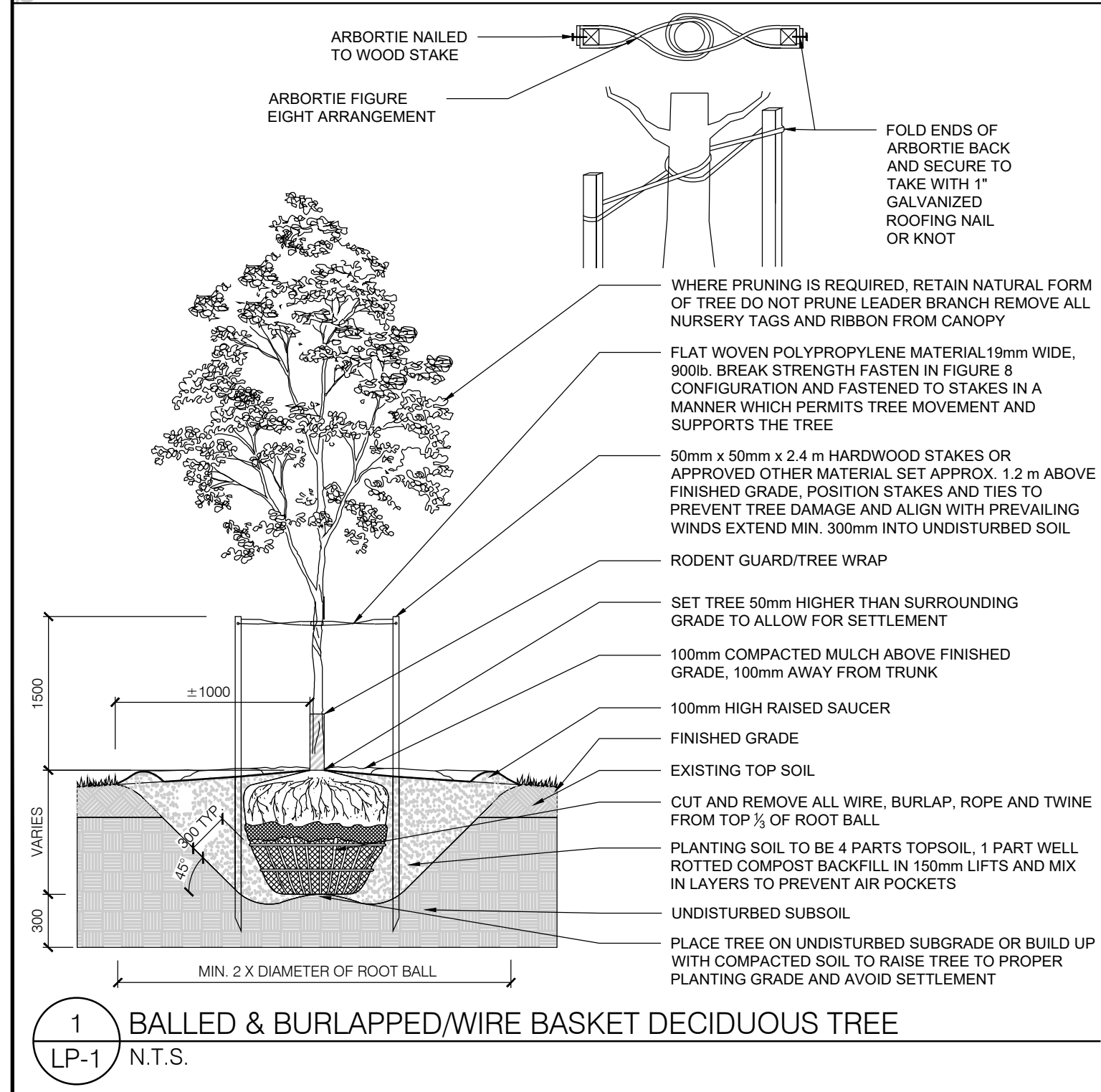
PROJECT MGR:
M.P.

APPROVED BY:
G.J.

SHEET TITLE
LANDSCAPE PLAN

SHEET NUMBER
LP-1

ISSUE
3



NOTES:

- SOIL MIXTURE: FOUR (4) PARTS NATIVE SOIL, ONE (1) PART WELL ROTTED COMPOST
- SAUCERS SHALL BE SOAKED WITH WATER AND MULCHED IMMEDIATELY FOLLOWING PLANTING
- ALL DIMENSIONS ARE IN mm.
- STAKING SCHEDULE:
 - < 2500mm HT. - ONE STAKE
 - > 2500mm HT. - TWO STAKES
- SPADED TREES - THREE STAKES OR GUY WIRES. ALL SUPPORT SYSTEMS MUST BE REMOVED ONCE TREE IS ESTABLISHED.
- ALL TREES TO BE STRAIGHT AND PLANTED VERTICALLY REGARDLESS OF SLOPE.
- TOP OF ROOT FLARE SHALL BE POSITIONED 50mm ABOVE GRADE.

GENERAL NOTES

- ANY AMBIGUITY IN THE DRAWINGS, SPECIFICATIONS OR DETAILS ARE TO BE REPORTED TO THE LANDSCAPE ARCHITECT FOR DIRECTION. THESE DRAWINGS SHALL NOT BE USED FOR CONSTRUCTION UNLESS STAMPED AND SIGNED BY THE LANDSCAPE ARCHITECT. THE CONTRACTOR IS NOT TO PROCEED IN UNCERTAINTY. THE LIMITS OF WORK ARE TO BE CLEARLY UNDERSTOOD BY THE CONTRACTOR PRIOR TO ANY WORK TAKING PLACE ON THE SITE.
- ALL DIMENSIONS ARE IN METERS UNLESS OTHERWISE NOTED. THE DRAWINGS MAY BE SCALED FOR APPROXIMATE LAYOUT. THE CONTRACTOR IS TO VERIFY ALL DIMENSIONS ON THE DRAWING(S) AND REPORT ANY DISCREPANCIES TO THE LANDSCAPE ARCHITECT.
- THE CONTRACTOR IS TO LOCATE AND MARK ALL INFRASTRUCTURE AND UTILITIES PRIOR TO ANY EXCAVATION WORK OR PLANTING ON THE SITE. DO NOT PLANT DIRECTLY ABOVE UNDERGROUND UTILITIES OR INFRASTRUCTURE UNLESS APPROVED BY THE LANDSCAPE ARCHITECT. DIG ALL HOLES BY HAND WHEN CLOSER THAN 1.0M TO ANY UNDERGROUND POWER, TELEPHONE OR GAS UTILITY. THE CONTRACTOR IS RESPONSIBLE FOR THE COORDINATION AND MAINTENANCE OF ALL UTILITY/INFRASTRUCTURE LOCATES FOR THE DURATION OF THE CONTRACT.
- THE CONTRACTOR SHALL SUPPLY ALL MATERIALS IN QUANTITIES SUFFICIENT TO COMPLETE WORK SHOWN ON THESE DRAWINGS. THE CONTRACTOR IS NOT TO SUBSTITUTE MATERIALS, PRODUCTS OR QUANTITIES WITHOUT PRIOR WRITTEN CONSENT OF THE LANDSCAPE ARCHITECT.
- THE CONTRACTOR IS TO TAKE ALL NECESSARY PRECAUTIONS TO PROTECT ALL EXISTING SITE FEATURES UNLESS SPECIFIED FOR REMOVAL/DEMOLITION. THIS INCLUDES ALL SURVEY BARS, STAKES, MONUMENTS AND SEDIMENT BARRIERS. THE CONTRACTOR IS RESPONSIBLE FOR ANY DAMAGES INCURRED DURING CONSTRUCTION AND MUST MAKE ALL NECESSARY RESTORATIONS AND REPAIRS TO ORIGINAL OR BETTER CONDITION.
- ALL EXISTING TREES, SHRUBS, AND HERBACEOUS PLANTS BEYOND THE LIMIT OF WORK ARE TO BE PROTECTED FROM CONSTRUCTION DAMAGE. THIS INCLUDES BUT IS NOT LIMITED TO: NOT STORING CONSTRUCTION MATERIALS OR FUEL WITHIN THE DRIPLINE OF AN EXISTING TREE. NOT ALTERING EXISTING GRADES OR COMPACTING SOIL. AVOID PROTECTIVE VEGETATION AND TAKING CARE NOT TO DISTURB OR EXPOSE THE ROOTS OF ANY EXISTING TREES. THE CONTRACTOR IS RESPONSIBLE FOR ALL PROTECTION OR HOARDING MEASURES OF ALL EXISTING TREES AND VEGETATION TO BE PRESERVED WITHIN OR ADJACENT TO CONSTRUCTION WORK LIMITS.
- CONTRACTOR IS RESPONSIBLE FOR THE REMOVAL OF ALL DEBRIS, GARBAGE AND SURPLUS MATERIALS ON SITE RELATED TO THEIR CONTRACT OR WORK AND MUST KEEP THE SITE IN A CLEAN, SAFE, USEABLE CONDITION AT ALL TIMES OR AS DIRECTED BY THE CONTRACT ADMINISTRATOR.

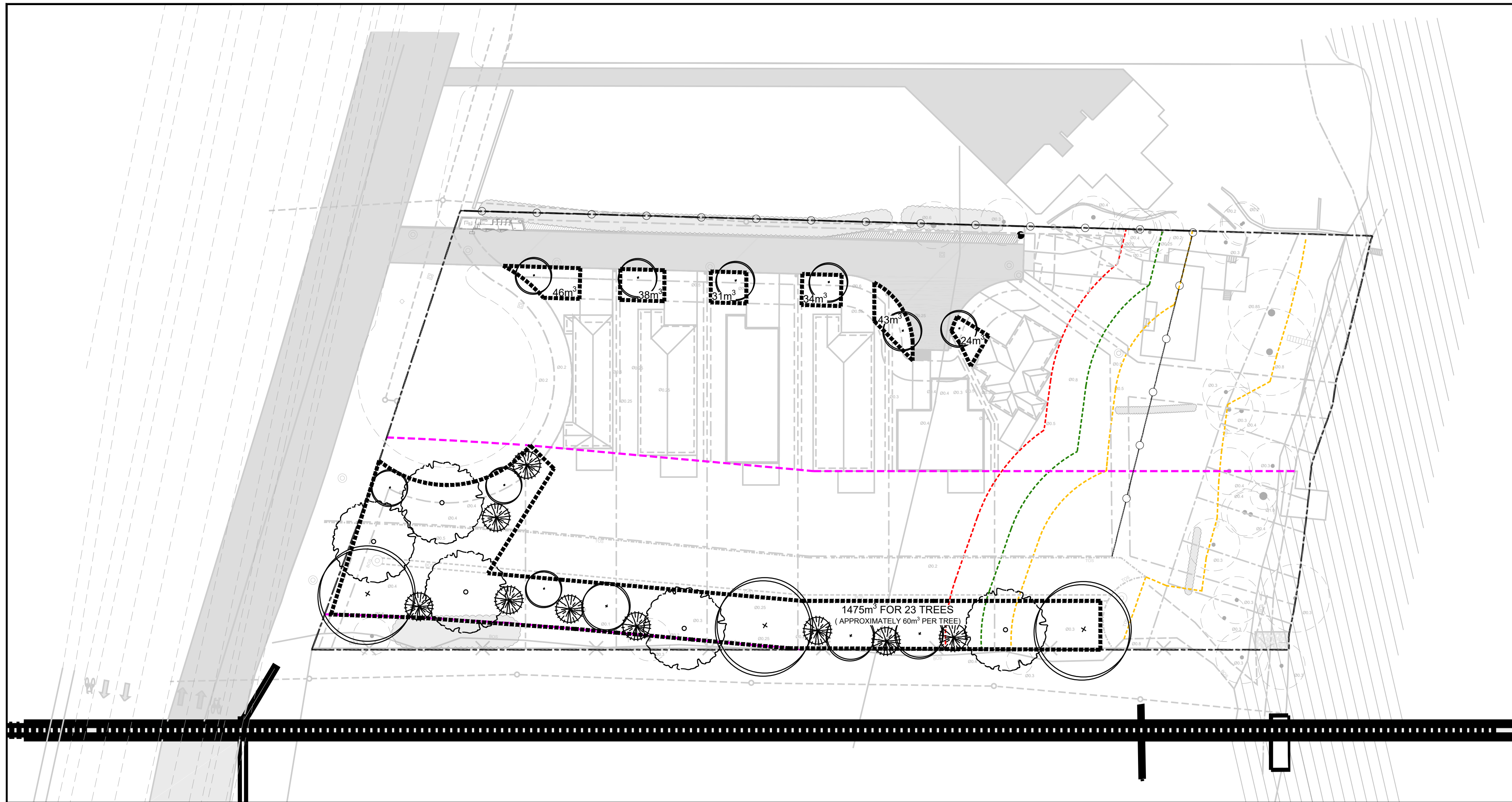
PLANTING NOTES

- THE CONTRACTOR MUST NOTIFY THE LANDSCAPE ARCHITECT PRIOR TO THE COMMENCEMENT OF ANY PLANTING. THE CONTRACTOR SHALL SUPPLY ALL PLANTS AND MATERIALS IN QUANTITIES SUFFICIENT TO COMPLETE THE WORK SHOWN ON THIS DRAWING. ANY DISCREPANCIES BETWEEN QUANTITIES SHALL BE REPORTED TO THE LANDSCAPE ARCHITECT.
- ALL LANDSCAPE WORKS WILL BE WARRANTED FOR A PERIOD OF TWO YEARS FOLLOWING INSPECTION AND WRITTEN NOTICE OF START OF WARRANTY PERIOD AS DETERMINED AND PROVIDED BY THE LANDSCAPE ARCHITECT. PLANT MATERIAL, WHICH IS NOT IN A HEALTHY, VIGOROUS GROWING CONDITION AT THE END OF THE WARRANTY PERIOD, SHALL BE REPLACED TO THE SATISFACTION OF THE LANDSCAPE ARCHITECT / OWNER.
- THE LANDSCAPE ARCHITECT RESERVES THE RIGHT TO EXTEND CONTRACTOR'S WARRANTY RESPONSIBILITIES FOR AN ADDITIONAL YEAR, IF, AT THE END OF INITIAL WARRANTY PERIOD, LEAF DEVELOPMENT AND GROWTH IS NOT SUFFICIENT TO ENSURE FUTURE SURVIVAL AS DETERMINED BY THE LANDSCAPE ARCHITECT.
- THE CONTRACTOR IS TO IDENTIFY WITH LANDSCAPE ARCHITECT/OWNER ANY MAINTENANCE REQUIREMENTS NECESSARY FOR WARRANTY PURPOSES.
- PLANT MATERIALS SPECIFIED FOR THIS PROJECT WILL CONFORM TO THE CANADIAN NURSERY LANDSCAPE ASSOCIATION (C.N.L.A.) FOR SIZE, VARIETY AND CONDITION AS INDICATED ON THE

PLANT SCHEDULE SHOWN ON THESE DRAWINGS. ANY PLANT MATERIALS WHICH DO NOT CONFORM WILL BE PROMPTLY REMOVED FROM THE SITE AND REPLACED BY THE CONTRACTOR AT NO ADDITIONAL COST TO THE PROJECT.

- THE LANDSCAPE ARCHITECT IS TO BE CONTACTED FOR INSPECTION AND WRITTEN APPROVAL PRIOR TO PLANT MATERIAL ARRIVING ON SITE. THE LANDSCAPE ARCHITECT RESERVES THE RIGHT TO REJECT ANY PLANT MATERIALS THAT HAVE NOT BEEN INSPECTED AND APPROVED.
- THE LANDSCAPE ARCHITECT RESERVES THE RIGHT TO REFUSE ACCEPTANCE OF ANY PLANT DISPLAYING POOR GROWTH HABITS, INJURY OR DISEASE. ANY PLANT MATERIAL THAT IS REJECTED BY THE LANDSCAPE ARCHITECT WILL BE PROMPTLY REMOVED FROM THE SITE AND REPLACED WITH MATERIAL OF ACCEPTABLE QUALITY AT NO ADDITIONAL CHARGE TO THE PROJECT.
- PLANT MATERIALS COLLECTED FROM WILD SOURCES WILL NOT BE ACCEPTED WITHOUT WRITTEN APPROVAL OF THE LANDSCAPE ARCHITECT. THE LANDSCAPE ARCHITECT RESERVES THE RIGHT TO REQUIRE THAT SUPPLIER INVOICES BE SUBMITTED FOR INSPECTION AND APPROVAL PRIOR TO ACCEPTANCE.
- ON-SITE LAYOUT OF THE PLANT MATERIALS TO BE APPROVED BY THE LANDSCAPE ARCHITECT PRIOR TO INSTALLATION. MINOR FIELD ADJUSTMENTS TO PLANT MATERIAL LOCATIONS MAY BE NECESSARY TO RESPOND TO THE LOCATIONS OF EXISTING PLANTS AND SITE CONDITIONS. THE CONTRACTOR TO REVIEW WITH LANDSCAPE ARCHITECT WHERE RELOCATIONS ARE NECESSARY. THE CONTRACTOR MUST RECEIVE APPROVAL FROM LANDSCAPE ARCHITECT PRIOR TO INSTALLATION.
- PLANTS ARE NOT TO BE INSTALLED DURING EXTREME HEAT, DROUGHT, OR OTHER UNDESIRABLE CONDITIONS. THOROUGHLY WATER ALL PLANTS IMMEDIATELY AFTER INSTALLATION. THE CONTRACTOR SHALL REGULARLY MONITOR SITE CONDITIONS AND WATER AS REQUIRED TO ENSURE HEALTHY GROWTH CONDITIONS THROUGHOUT THE DURATION OF THE WARRANTY PERIOD.
- DO NOT PLANT DIRECTLY IN CENTERLINE OF DRAINAGE SWALES OR DEPRESSION AREAS. WHERE PROPOSED PLANTING LOCATIONS CONFLICT WITH CONSTRUCTED SWALES OR LOW-LYING WET AREAS, CONTACT LANDSCAPE ARCHITECT FOR DIRECTION.
- ALL PLANTS ARE TO BE PLANTED IN ACCORDANCE WITH THE PLANTING DETAILS SHOWN ON THIS DRAWING. ALL PLANTS ARE TO BE INSTALLED VERTICAL AND PLUMB, REGARDLESS OF GROUND SLOPE.
- SUPPLY AND PLACE TOPSOIL IN ACCORDANCE WITH OPS8 802 TO A MINIMUM DEPTH OF 150MM IN SEEDBED AREAS AND 600MM IN PLANTING BEDS UNLESS OTHERWISE SPECIFIED. EACH SOURCE OF TOPSOIL, IMPORTED OR NATIVE TO BE APPROVED BY LANDSCAPE ARCHITECT PRIOR TO USE. SUBMIT TOPSOIL ANALYSIS/TEST RESULTS TO LANDSCAPE ARCHITECT PRIOR TO ORDER OR DELIVERY TO SITE. TESTING TO BE IN ACCORDANCE WITH CONTRACT SPECIFICATIONS. PREPARED TOPSOIL SHALL BE 4 PARTS TOPSOIL TO ONE PART WELL-ROTTED COMPOST.
- MULCH: TO BE SPREAD UNIFORMLY AROUND THE BASE OF TREES AND SHRUBS TO A MINIMUM DEPTH OF 100 MM. DO NOT PLACE MULCH IN DIRECT CONTACT WITH TRUNK OR STEM(S). ALLOW A 100 MM MULCH FREE ZONE AT TRUNK/STEMS. SHRUBS TO BE IN CONTINUOUSLY MULCHED PLANTING BEDS UNLESS OTHERWISE SPECIFIED.
- SUPPLY AND PLACE SEED IN ACCORDANCE WITH OPS8 804 UNLESS OTHERWISE SPECIFIED. ALL 5:1 OR GREATER SLOPES TO BE SEEDBED WITH TACKIFIER. ALL SLOPES GREATER THAN 3:1 SHALL BE MATTED WITH AN EROSION CONTROL BLANKET. SUPPLY AND PLACE SOD IN ACCORDANCE WITH OPS8 803 UNLESS OTHERWISE SPECIFIED.
- THE CONTRACTOR IS TO REMOVE DEAD OR DAMAGED BRANCHES ON TREES OR SHRUBS. ALL PRUNING SHALL BE PERFORMED IN ACCORDANCE WITH STANDARD HORTICULTURAL PRACTICES AND APPROPRIATE TIMING FOR EACH SPECIES.
- ALL STAKES AND ASSOCIATED TIES ARE TO BE REMOVED AFTER THE FIRST FULL GROWING SEASON. ROOT GUARDS ARE TO BE REMOVED AT THE CONCLUSION OF THE WARRANTY PERIOD. IF UTILIZED, GARDEN BARRIERS ARE TO BE REMOVED FOR WINTER MONTHS.

File Location: \\Chawan\143075_2009_n_2013_7_0_Production\03_Design\Landscapesheets\143075_LP-1.dwg
 Last Saved: January 8, 2025, 4:47:26 PM by Shiny Kotachary, Redline
 Plotter: February 6, 2025, by sheny0564
 SCALE CHECK:

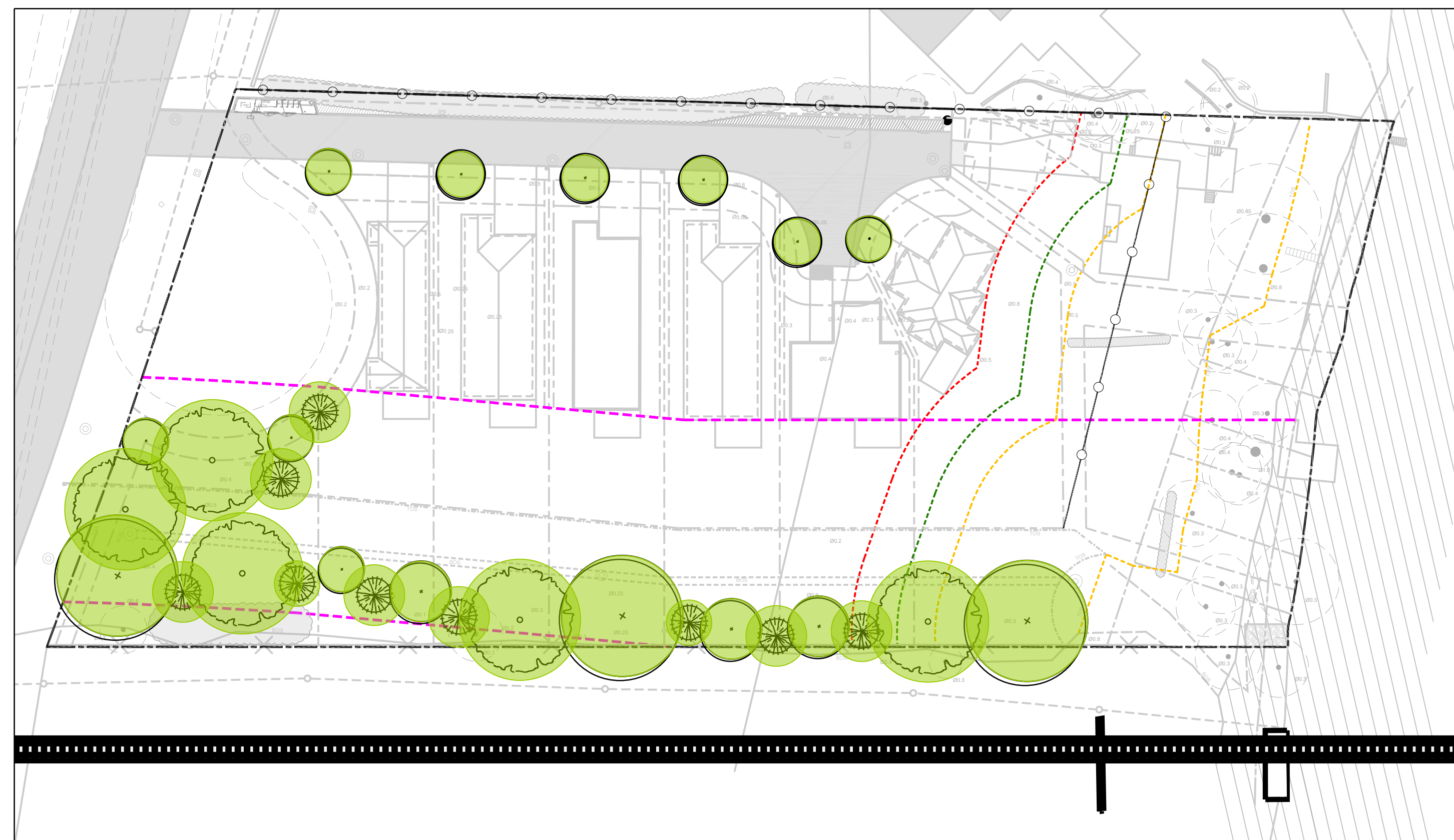
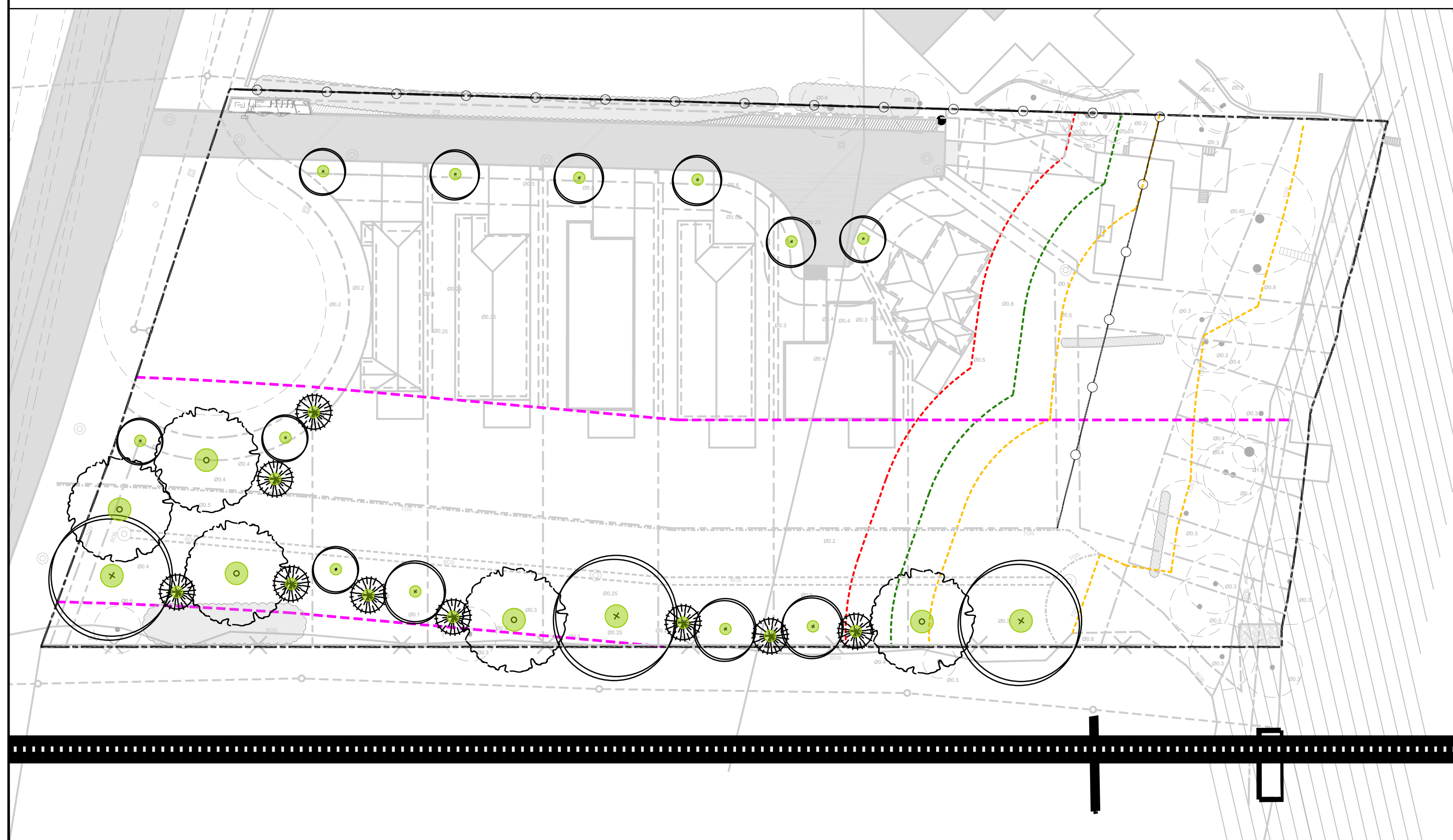


CANOPY CALCULATIONS

KEY	BOTANICAL NAME	COMMON NAME	QTY.	CROWN AREA PER TREE WHEN PLANTED (m²)	CANOPY AREA SUBTOTAL WHEN PLANTED (m²)	CROWN AREA PER TREE WHEN MATURE (m²)	CANOPY AREA SUBTOTAL WHEN MATURE (m²)	PERCENTAGE OF TOTAL CANOPY (%)	PERCENTAGE OF TOTAL GENUS (%)
LARGE STATURE TREES									
Ar	<i>Acer rubrum</i>	Red maple	3	4	12	154	462	22.1%	10.3%
Cc	<i>Carpinus caroliniana</i>	American hophornbeam	2	4	8	154	308	14.7%	6.9%
Cc	<i>Celtis occidentalis</i>	Common hackberry	3	4	12	154	462	22.1%	10.3%
MEDIUM STATURE TREES									
Ab	<i>Abies balsamea</i>	Balsam fir	2	3	6	78.5	157	7.5%	6.9%
Ap	<i>Acer pensylvanicum</i>	Striped maple	3	3	9	78.5	235.5	11.2%	10.3%
Pg	<i>Picea glauca</i>	White spruce	3	3	9	78.5	235.5	11.2%	10.3%
Ps	<i>Pinus strobus</i>	Eastern white pine	1	3	3	78.5	78.5	3.7%	3.4%
Tc	<i>Taxus canadensis</i>	Eastern hemlock	1	3	3	78.5	78.5	3.7%	3.4%
SMALL STATURE TREES									
AgA	<i>Amelanchier × grandiflora</i> 'Autumn Brilliance'	Autumn brilliance serviceberry	3	1	3	7	21	1.0%	10.3%
CcC	<i>Crataegus crus-galli</i> 'Cruzam'	Crusader Cockspur thorn	3	1	3	7	21	1.0%	10.3%
To	<i>Thuja occidentalis</i>	Eastern white cedar	2	1	2	7	14	0.7%	6.9%
Mt	<i>Malus 'Thunderchild'</i>	Thunderchild flowering crabapple	3	1	3	7	21	1.0%	10.3%
TOTAL			29		73		2084	100.0%	100.0%
TOTAL SITE AREA (m²)							11300		
TOTAL TREE CANOPY PERCENTAGE WHEN PLANTED (%)							0.6%		
TOTAL MATURE TREE CANOPY PERCENTAGE (%)							18.5%		

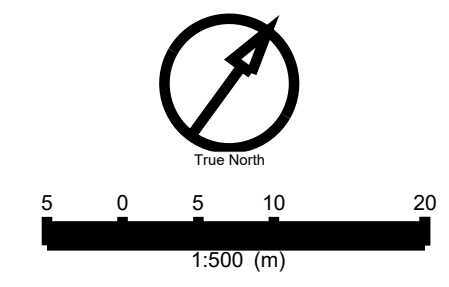
* mature tree canopy areas are derived from oakville canopy cover guidelines

LANDSCAPE SOIL PLAN FOR TREES



CANOPY PLAN - AS PLANTED

CANOPY PLAN - IN 40 YEARS



CLIENT
ALEX SIVASAMBU 7 LEAVER AVENUE

OTTAWA, ON K2E 5P5

COPYRIGHT
This drawing has been prepared solely for the intended use, thus any reproduction or distribution for any purpose other than authorized by Arcadis is forbidden. Written dimensions shall have precedence over scaled dimensions. Contractors shall verify and be responsible for all dimensions and conditions on the job, and Arcadis shall be informed of any variations from the dimensions and conditions shown on the drawing. Shop drawings shall be submitted to Arcadis for general conformance before proceeding with fabrication.

Arcadis Professional Services (Canada) Inc.
formerly BI Group Professional Services (Canada) Inc.

ISSUES		
No.	DESCRIPTION	DATE
1	ISSUED FOR SPA	2024-07-25
2	ISSUED FOR SPA	2024-01-07
3	ISSUED FOR SPA	2025-02-06

- LEGEND**
- PROPOSED DECIDUOUS SHADE TREE
 - PROPOSED CONIFEROUS TREE
 - EXISTING TREES TO REMAIN
 - EXISTING HEDGE TO REMAIN
 - PLANT SPECIES QUANTITY
 - SUBJECT SITE
 - ACCESS ALLOWANCE AND WATER COURSE SETBACK
 - TOE EROSION SETBACK
 - STABLE SLOPE ALLOWANCE
 - RAILWAY SETBACKS
 - LOT LINES
 - FLOOD PLAIN LIMITS
 - SNOW STORAGE
 - LP
 - TREE PROTECTION FENCE

* REFER TO TREE MANAGEMENT REPORT AND DRAWINGS PREPARED BY ITS ASSOCIATES

SEAL

NOT FOR CONSTRUCTION

PRIME CONSULTANT
ARCADIS
410 Albert Street - Suite 101
Waterloo ON N2L 3V3 Canada
tel 519 585 2255
www.arcadis.com

PROJECT
2009/2013 PRINCE OF WALES
OTTAWA, ON

PROJECT NO:
143075
DRAWN BY: R.S. CHECKED BY: M.P.
PROJECT MGR: M.P. APPROVED BY: G.J.

SHEET TITLE
SOIL AND CANOPY PLAN

SHEET NUMBER
LP-2 ISSUE
3