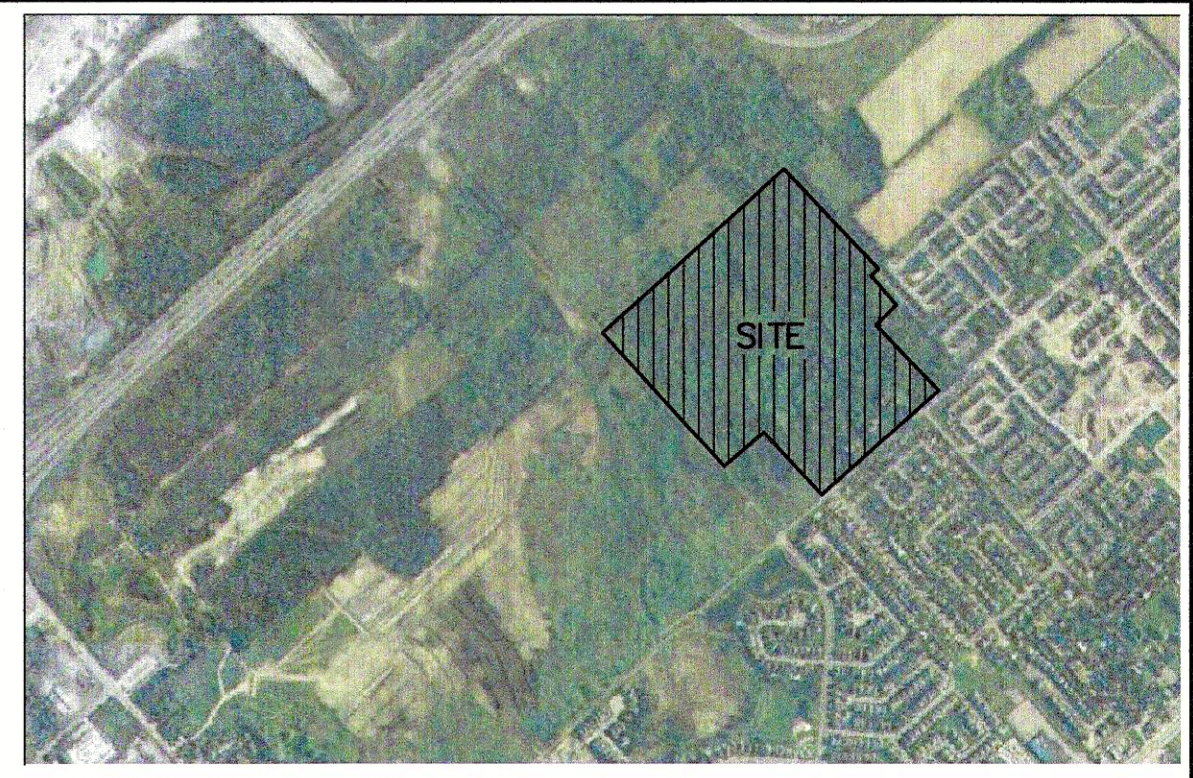
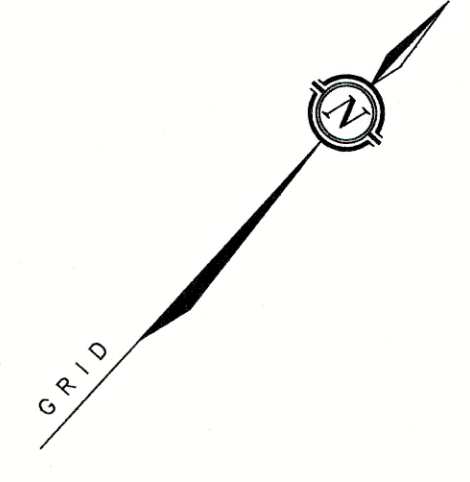


METRIC
DISTANCES AND ELEVATIONS SHOWN ON THIS PLAN ARE IN METRES
AND CAN BE CONVERTED TO FEET BY DIVIDING BY 0.3048

UNDEVELOPED
PART 1, PLAN 4R-20912
PIN 04487-2611
Rail & Wire Fence



KEY PLAN - NOT TO SCALE



**DRAFT PLAN OF SUBDIVISION OF
PART OF LOT 1
CONCESSION 1
GEOGRAPHIC TOWNSHIP OF HUNTLEY
CITY OF OTTAWA**

SCALE 1 : 500
0 10 20 50 metres

FAIRHALL, MOFFATT & WOODLAND LIMITED
ONTARIO LAND SURVEYORS

SUBJECT TO THE CONDITIONS, IF ANY, SET FORTH IN
OUR LETTER DATED July 16, 2024, THIS DRAFT
PLAN IS APPROVED BY THE CITY OF OTTAWA UNDER
SECTION 51 OF THE PLANNING ACT THIS 6 DAY
OF AUGUST, 2024.

Kersten Nitsche

**KERSTEN NITSCHKE, ACTING MANAGER
DEVELOPMENT REVIEW WEST
PLANNING, DEVELOPMENT AND BUILDING
SERVICES DEPARTMENT, CITY OF OTTAWA**

OWNER'S AUTHORIZATION

I HEREBY AUTHORIZE THE SUBMISSION OF THIS PLAN FOR
APPROVAL.

FORMASIAN DEVELOPMENT CORP.

DATE _____ VINCENT LU

SURVEYOR'S CERTIFICATE

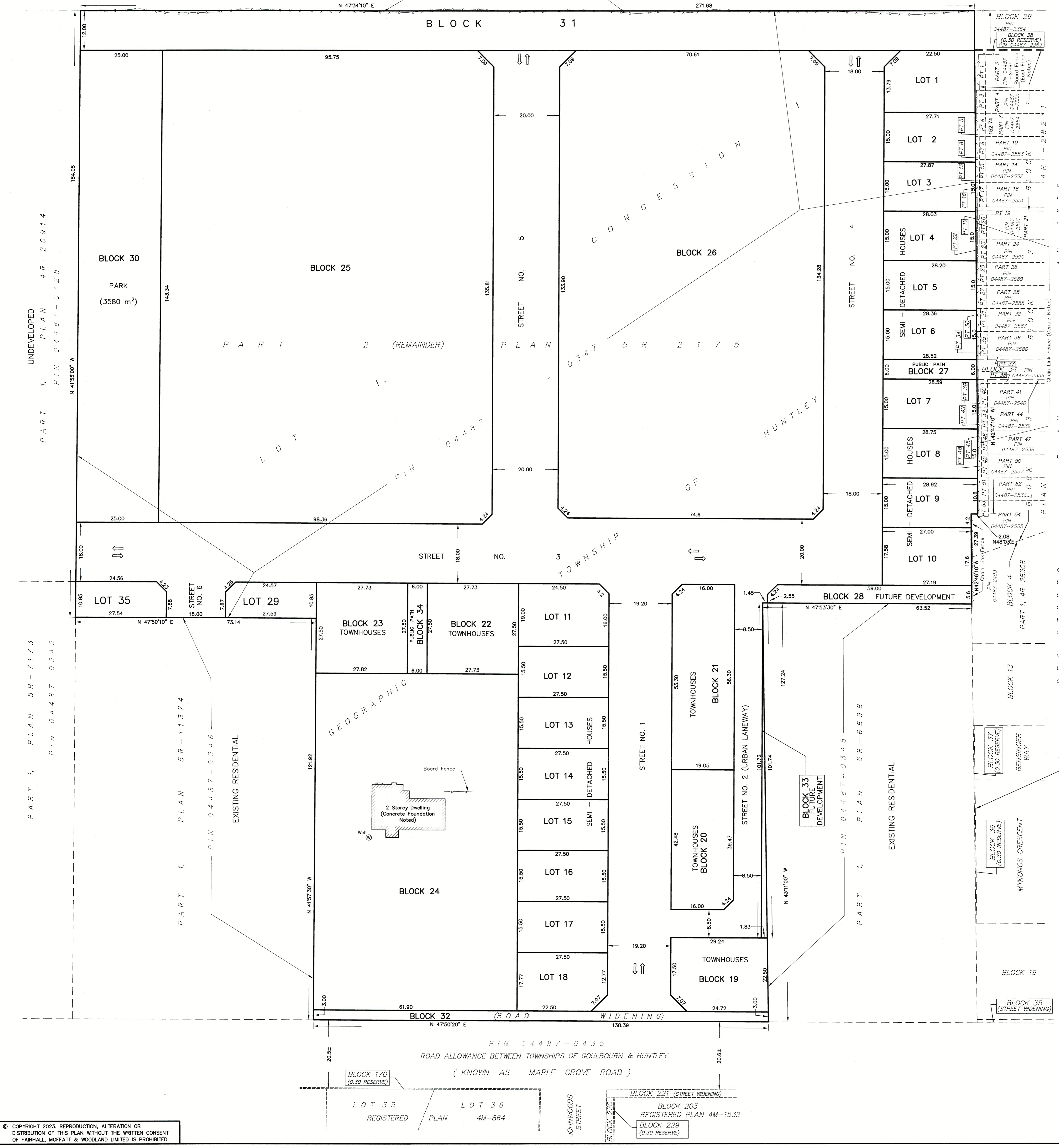
I HEREBY CERTIFY THAT THE BOUNDARIES OF THE LANDS TO BE
SUBDIVIDED AS SHOWN ON THIS PLAN AND THEIR RELATIONSHIP
TO ADJOINING LANDS ARE ACCURATELY AND CORRECTLY SHOWN.

2023/11/02
DATE _____
JOHN H. GUTRI
ONTARIO LAND SURVEYOR

SECTION 51 (17) OF THE PLANNING ACT.

- a) SHOWN ON PLAN
- b) SHOWN ON PLAN
- c) SHOWN ON PLAN
- d) 6 APARTMENT BUILDINGS (4 STOREYS EACH)
5 TOWNHOUSE UNITS
36 SEMI-DETACHED UNITS
PARKLAND
- e) SHOWN ON PLAN
- f) SHOWN ON PLAN
- g) SHOWN ON PROJECT SITE PLAN
- h) WATER SUPPLY WILL BE FROM MUNICIPAL MAINS
- i) SEE GEOTECHNICAL INVESTIGATION REPORT PG4507-1
BY PATERSONGROUP DATED JULY 20, 2018.
- j) SHOWN ON PLAN
- k) WATER SUPPLY, STORM AND SANITARY SEWERS, FIRE
PROTECTION, POLICING, BUS SERVICE AND GARBAGE COLLECTION
ARE AVAILABLE.
- l) NONE

SITE AREA = 6.675 Ha.



© COPYRIGHT 2023. REPRODUCTION, ALTERATION OR
DISTRIBUTION OF THIS PLAN WITHOUT THE WRITTEN CONSENT
OF FAIRHALL, MOFFATT & WOODLAND LIMITED IS PROHIBITED.

Fairhall Moffatt & Woodland LIMITED Ontario Land Surveyors Surveying and Land Information Services 100-500 TERRY FOX DRVE, KANATA, ONTARIO K2L 4B8 TEL: (613) 591-2260 FAX: (613) 591-1495 www.fmw.on.ca	JOB No. W 4 0 2 0 1
	E 349447, N 5016212
	REFERENCE No. 74 (b) - 1 HUNTLEY
	S:\085\W40200\DWL30\dp402w_1nov2023.dwg