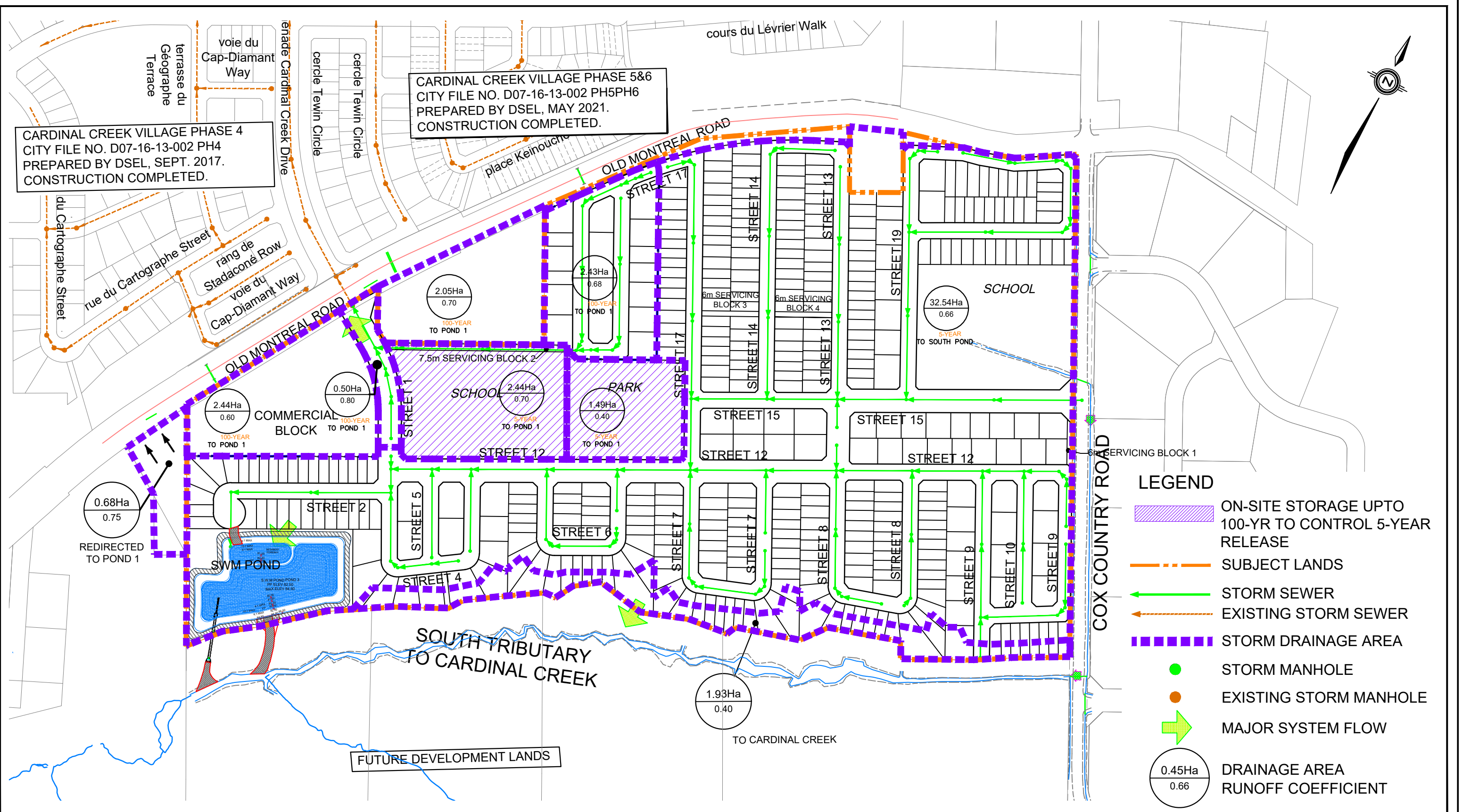


CARDINAL CREEK VILLAGE PHASE 5&6  
 CITY FILE NO. D07-16-13-002 PH5PH6  
 PREPARED BY DSEL, MAY 2021.  
 CONSTRUCTION COMPLETED.

CARDINAL CREEK VILLAGE PHASE 4  
 CITY FILE NO. D07-16-13-002 PH4  
 PREPARED BY DSEL, SEPT. 2017.  
 CONSTRUCTION COMPLETED.



**LEGEND**

- ON-SITE STORAGE UPTO 100-YR TO CONTROL 5-YEAR RELEASE
- SUBJECT LANDS
- STORM SEWER
- EXISTING STORM SEWER
- STORM DRAINAGE AREA
- STORM MANHOLE
- EXISTING STORM MANHOLE
- MAJOR SYSTEM FLOW
- 0.45Ha  
0.66 DRAINAGE AREA RUNOFF COEFFICIENT

120 Iber Road, Unit 103  
 Stittsville, ON K2S 1E9  
 TEL: (613) 836-0856  
 FAX: (613) 836-7183  
 www.DSEL.ca



**POND DRAINAGE PLAN  
 CARDINAL CREEK VILLAGE SOUTH**

PROJECT No.:	19-1153
SCALE:	1:4000
DATE:	NOVEMBER 2024
FIGURE:	10