

**DRAFT PLAN OF SUBDIVISION OF
PART OF LOTS 21 and 22
CONCESSION 1 (RIDEAU FRONT)**
Geographic Township of Gloucester
CITY OF OTTAWA
Prepared by Annis, O'Sullivan, Vollebek Ltd.

SURVEYOR'S CERTIFICATE

I CERTIFY THAT:
The boundaries of the lands to be subdivided and their relationship to adjoining lands have been accurately and correctly shown.

Nov 20, 2024
Date

T. Hartwick
ONTARIO LAND SURVEYOR

OWNER'S CERTIFICATE

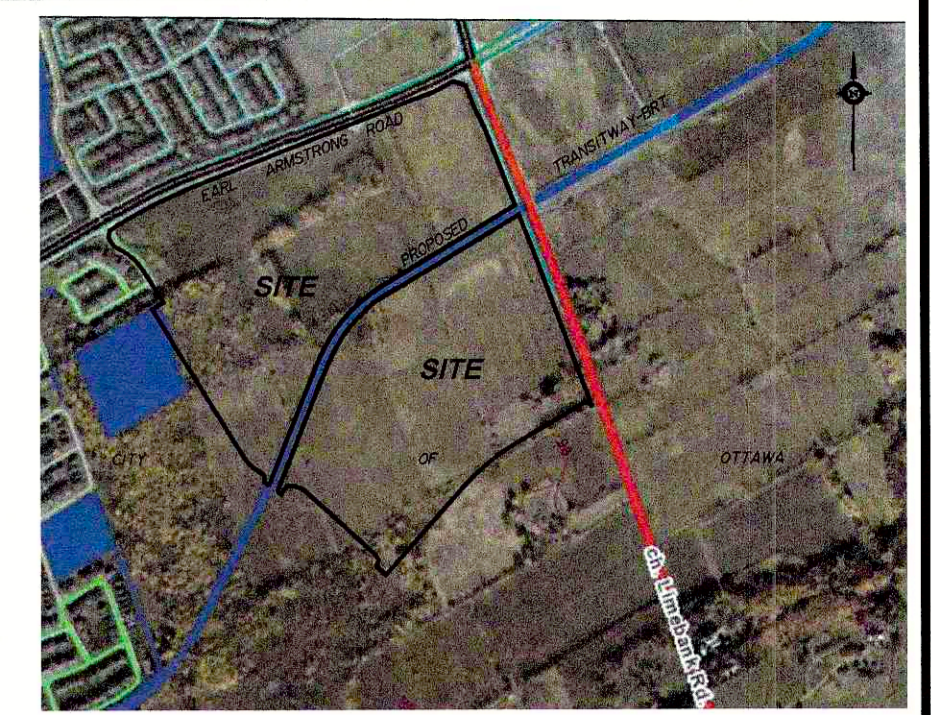
This is to certify that I am the owner / agent of the lands to be subdivided and that this plan was prepared in accordance with my instructions.

December 12, 2024
Date

Vincent Danonme
Manager - Planning and Development
I have authority to bind the corporation

SUBJECT TO THE CONDITIONS, IF ANY, SET FORTH IN OUR LETTER DATED November 19, 2024, THIS DRAFT PLAN IS APPROVED BY THE CITY OF OTTAWA UNDER SECTION 51 OF THE PLANNING ACT THIS 10 DAY OF DECEMBER, 2024.

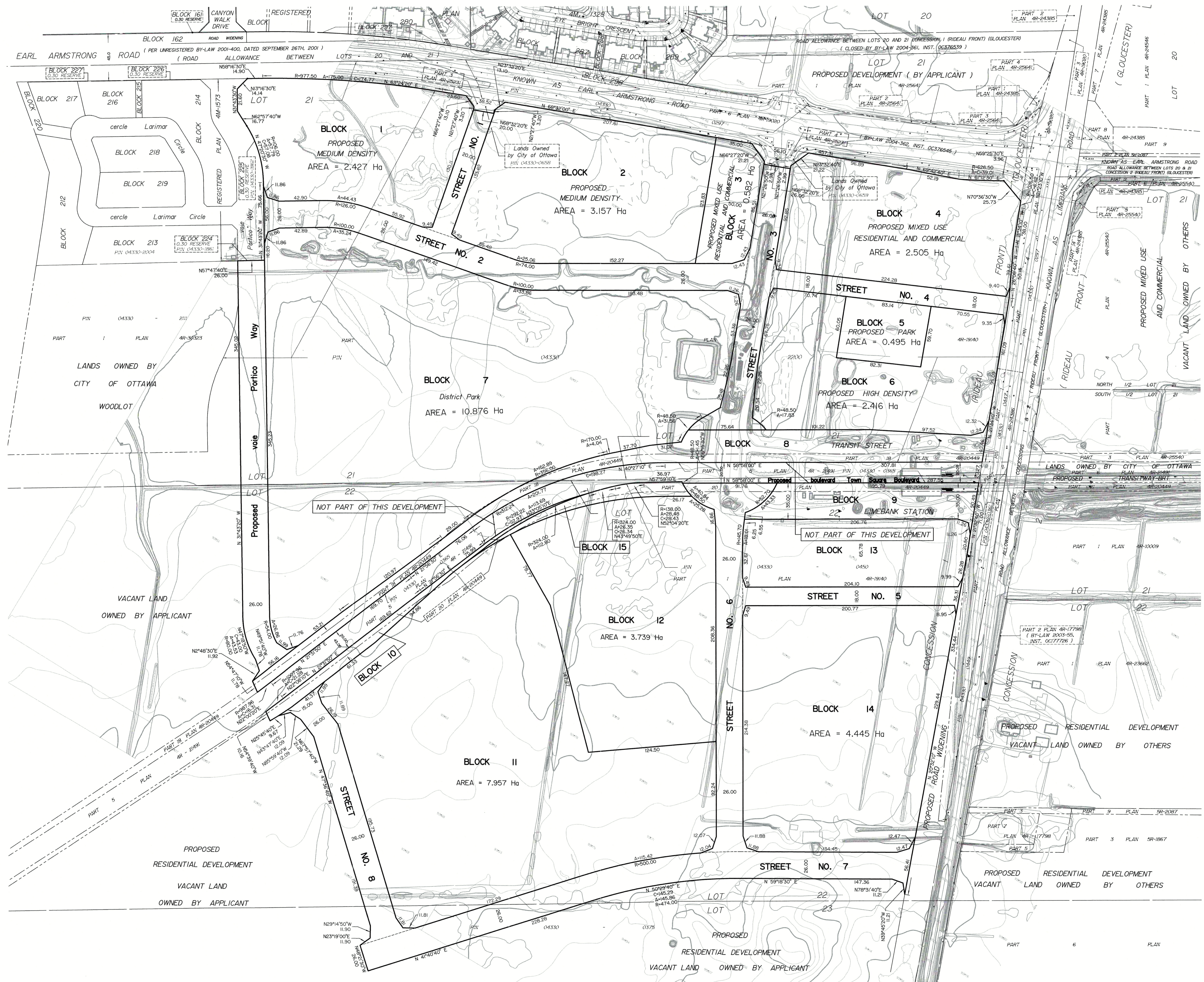
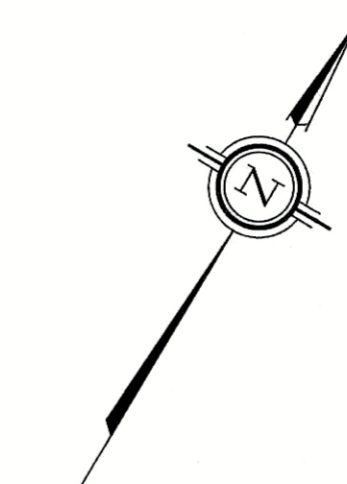
LILY XU, MCIP, RPP, MANAGER
DEVELOPMENT REVIEW SOUTH
PLANNING, INFRASTRUCTURE AND ECONOMIC
DEVELOPMENT DEPARTMENT, CITY OF OTTAWA



Scale 1 : 1500
0 5 10 15 20 25 30 35 40 45 50 55 60 Metres

Metric
DISTANCES SHOWN ON THIS PLAN ARE IN METRES AND CAN BE CONVERTED TO FEET BY DIVIDING BY 0.3048

- ADDITIONAL INFORMATION REQUIRED UNDER SECTION 51-17 OF THE PLANNING ACT**
- (a) see plan
 - (b) see plan
 - (c) see plan
 - (d) multi-family residential housing, park land, commercial, institutional
 - (e) see plan
 - (f) see plan
 - (g) see plan
 - (h) City of Ottawa
 - (i) see soils report
 - (j) see plan
 - (k) sanitary, storm sewers, municipal water, bell, hydro, cable and gas to be available
 - (l) none known



AREA SCHEDULE

LOT/BLOCK	AREA (sqm)
1	24,270
2	31,567
3	5,615
4	25,048
5	4,946
6	24,159
7	108,756
8	14,476
9	7,328
10	2,543
11	79,573
12	37,388
13	14,242
14	44,448
15	1,997
STREETS	72,516
TOTAL	490,072