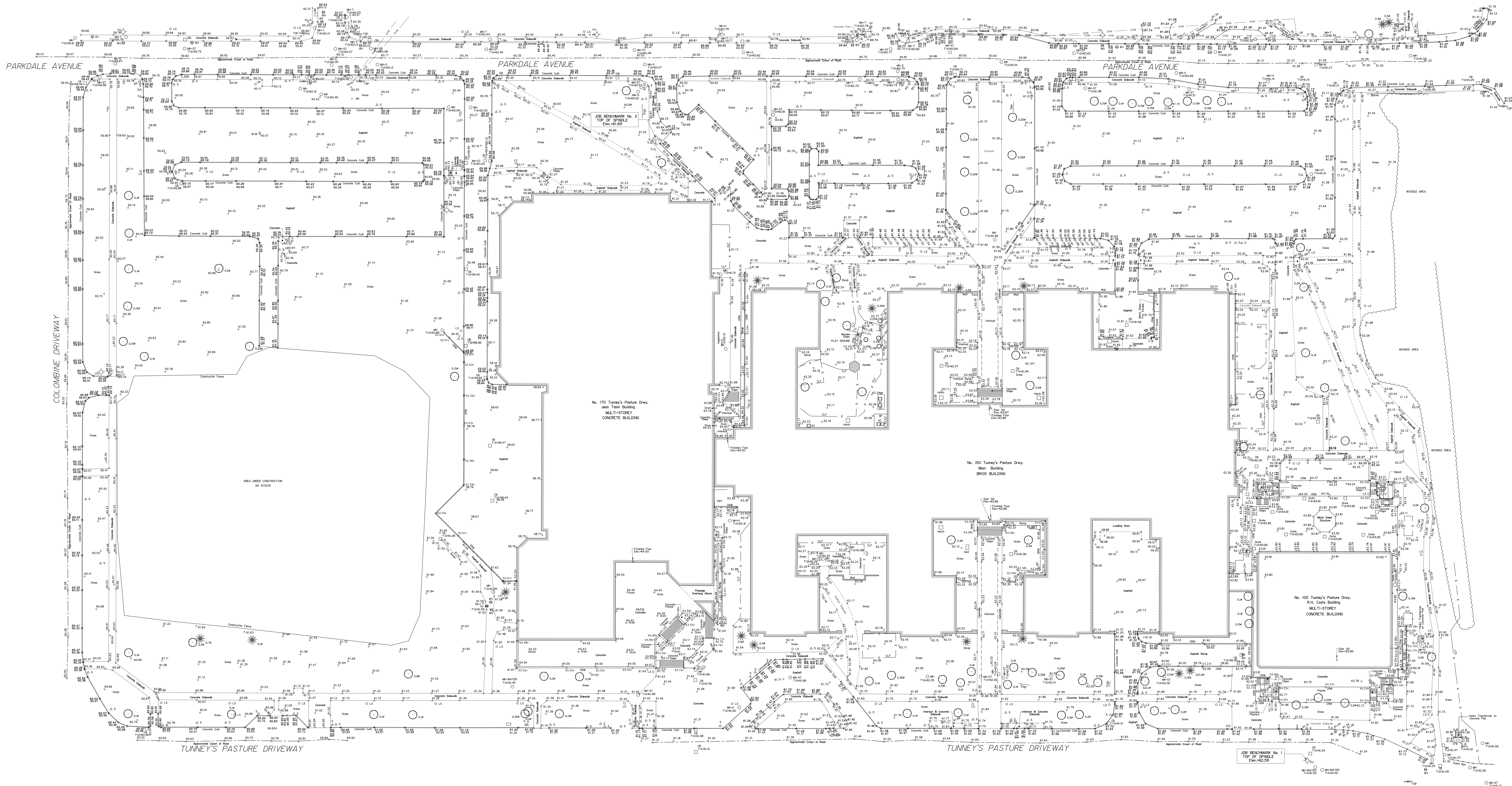
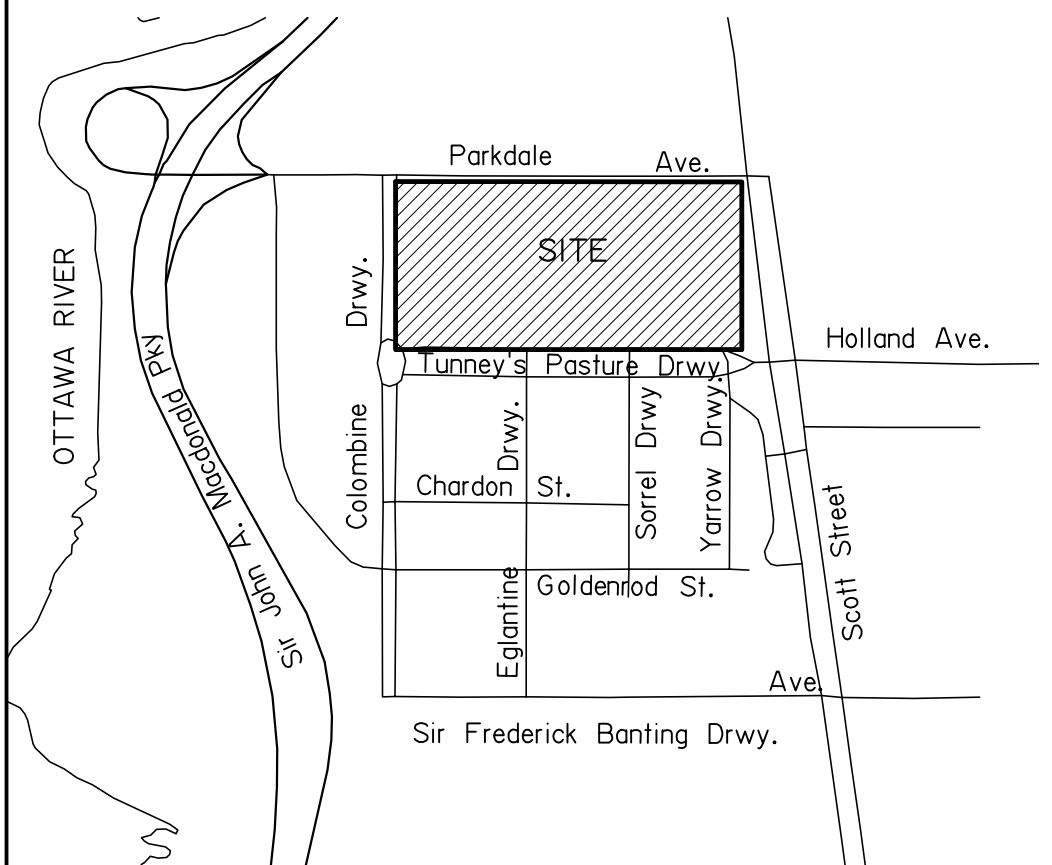


KEY PLAN
Not to Scale



SKETCH TO ILLUSTRATE TOPOGRAPHICAL FEATURES

Tunney's Pasture
CITY OF OTTAWA

Prepared by Annis, O'Sullivan, Vollebek Ltd.
November 30, 2022

REVISION NOTE: Plan revised January 17, 2023

REVISION NOTE: Plan revised November 25, 2024

Scale 1:400

Metric
DISTANCES SHOWN ON THIS PLAN ARE IN METRES AND
CAN BE CONVERTED TO FEET BY DIVIDING BY 0.3048

Notes & Legend

- Denotes
- MH-17 Maintenance Hole (Storm Sewer)
 - MH-18 Maintenance Hole (Sanitary)
 - MH-19 Maintenance Hole (Bell)
 - MH-20 Maintenance Hole (Traffic)
 - MH-21 Maintenance Hole (Hydro)
 - MH-22 Maintenance Hole (Unidentified)
 - UP Utility Pole
 - LS Light Standard
 - CB Catch Basin
 - CBH Catch Basin Inlet
 - FH Fire Hydrant
 - WV Water Valve
 - TS Top of Grade
 - HW Handhole
 - G Gas Meter
 - S Substation
 - S Sign
 - CLF Chain Link Fence
 - MF Metal Fence
 - D Diameter
 - L Location of Elevations
 - T Top of Curb Elevations
 - T Top of Wall Elevations
 - CRW Concrete Retaining Wall
 - SRW Stone Retaining Wall
 - D Deciduous Tree
 - C Coniferous Tree
 - T Traffic Signal Post
 - AC Air Conditioner
 - TC Cable Terminal Box
 - U Underside Terminal Box
 - VC Valve Chamber (Watermain)
 - V Gas Valve
 - MW Monitoring Well

NOTE:

Digital File related to MTM-NAD-83 (CGRS) (2010) Zone 9.

ELEVATION NOTES

- Elevations shown are geoidic and are referred to the CGVD2013 geoidic datum.
- It is the responsibility of the user of this information to verify that the job benchmark has not been altered or disturbed and that its relative elevation and description agrees with the information shown on this drawing.

UTILITY NOTES

- This drawing cannot be accepted as acknowledging all of the utilities and it will be the responsibility of the user to contact the respective utility authorities for confirmation.
- Only visible surface utilities were located.
- A field location of underground plant by the pertinent utility authority is mandatory before any work involving breaking ground, probing, excavating, etc.