

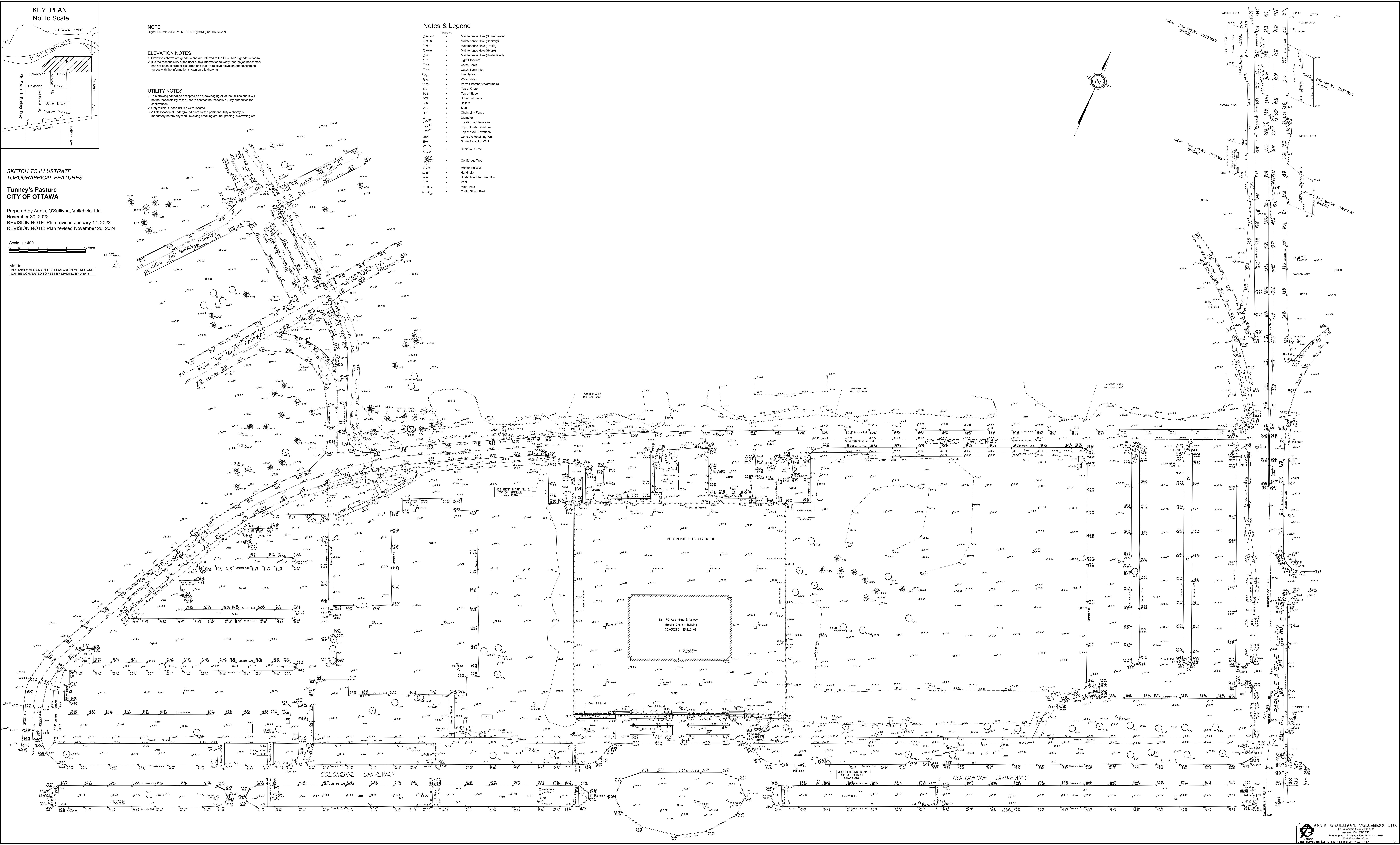
SKETCH TO ILLUSTRATE  
TOPOGRAPHICAL FEATURES

Tunney's Pasture  
CITY OF OTTAWA

Prepared by Annis, O'Sullivan, Vollebakk Ltd.  
November 30, 2022  
REVISION NOTE: Plan revised January 17, 2023  
REVISION NOTE: Plan revised November 26, 2024

Scale 1 : 400

Metric  
DISTANCES SHOWN ON THIS PLAN ARE IN METRES AND  
CAN BE CONVERTED TO FEET BY DIVIDING BY 0.3048



Notes & Legend

- Denotes
- MH-01 - Maintenance Hole (Storm Sewer)
  - MH-02 - Maintenance Hole (Sanitary)
  - MH-03 - Maintenance Hole (Traffic)
  - MH-04 - Maintenance Hole (Hydro)
  - LS - Light Standard
  - CB - Catch Basin
  - FI - Fire Hydrant
  - WV - Water Valve
  - VC - Valve Chamber (Watermain)
  - T/G - Top of Grate
  - T/S - Top of Slope
  - B/S - Bottom of Slope
  - S - Sign
  - CLF - Chain Link Fence
  - D - Diameter
  - L - Location of Elevations
  - T/E - Top of Curb Elevations
  - T/W - Top of Wall Elevations
  - CRW - Concrete Retaining Wall
  - SRW - Stone Retaining Wall
  - DT - Deciduous Tree
  - CT - Coniferous Tree
  - MW - Monitoring Well
  - HW - Handhole
  - UTB - Undersized Terminal Box
  - V - Vent
  - MP - Metal Pole
  - TS - Traffic Signal Post

NOTE:

Digital File related to: MTM-NAD-03 (CSRS) (2010) Zone 9.

ELEVATION NOTES

- Elevations shown are geoids and are referred to the CGVD2013 geoid datum.
- It is the responsibility of the user of this information to verify that the job benchmark has not been altered or disturbed and that its relative elevation and description agrees with the information shown on this drawing.

UTILITY NOTES

- This drawing cannot be accepted as acknowledging all of the utilities and it will be the responsibility of the user to contact the respective utility authorities for confirmation.
- Only visible surface utilities were located.
- A field location of underground plant by the pertinent utility authority is mandatory before any work involving breaking ground, probing, excavating etc.