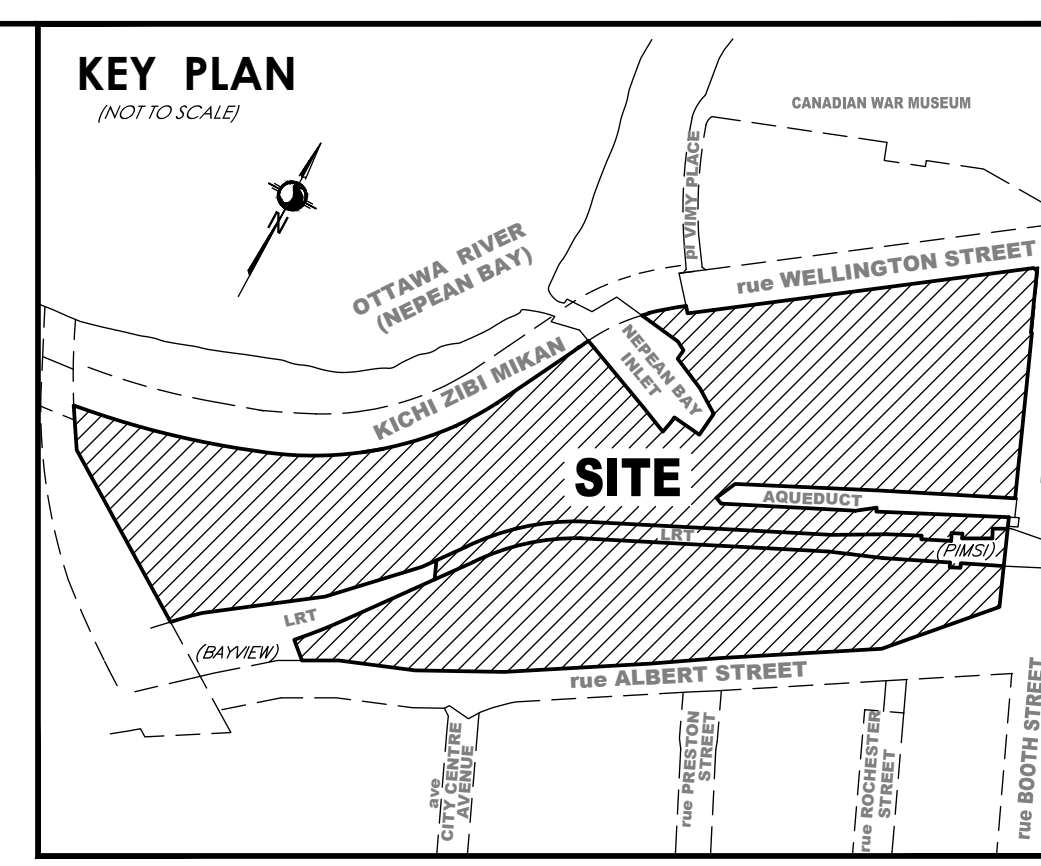


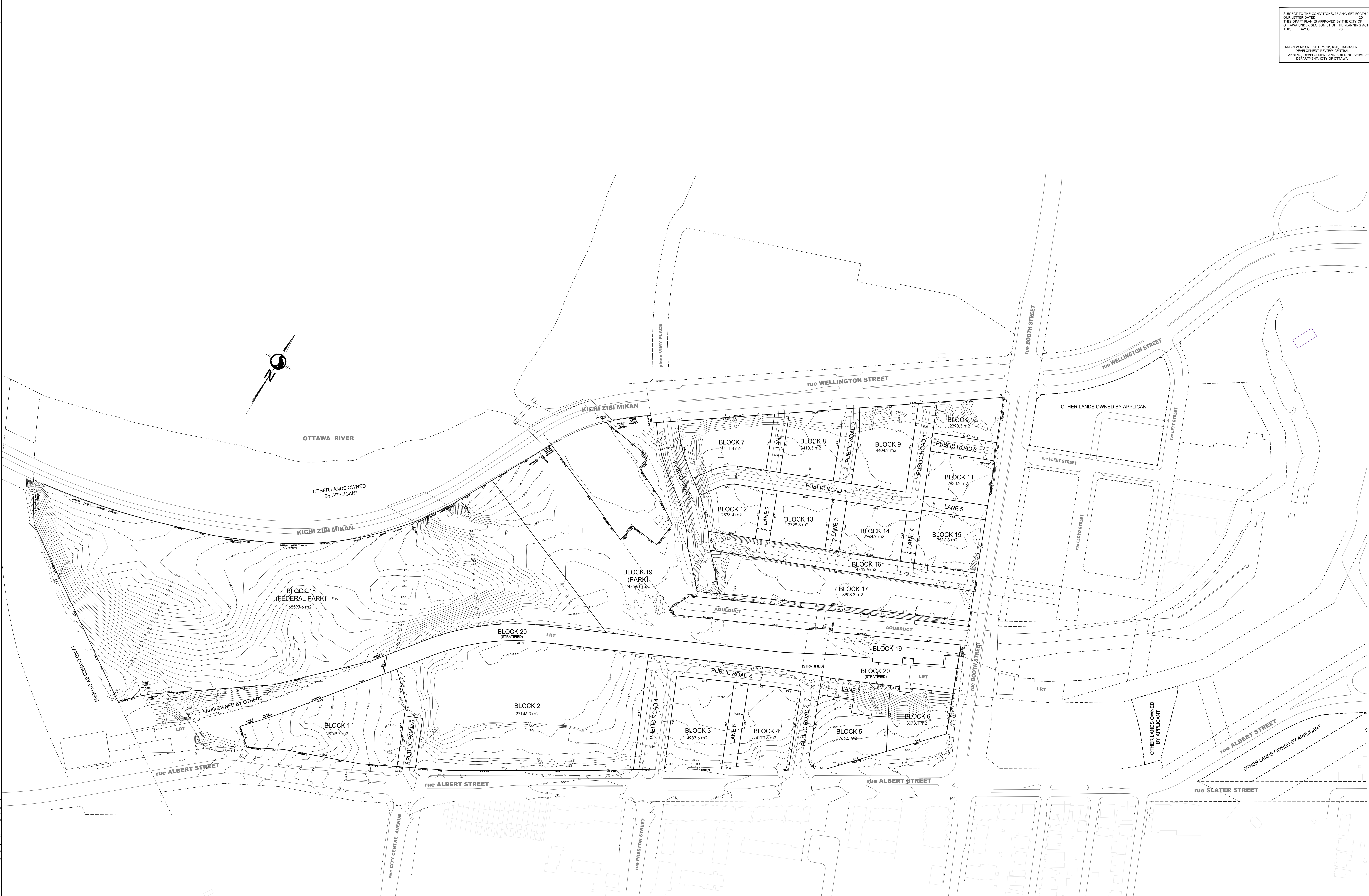
SUBJECT TO THE CONDITIONS, IF ANY, SET FORTH IN OUR LETTER DATED _____, 20____.
 THIS DRAFT PLAN IS APPROVED BY THE CITY OF OTTAWA UNDER SECTION 51 OF THE PLANNING ACT, THIS _____ DAY OF _____, 20____.

ANDREW MCCREIGHT, MCP, RPP, MANAGER
 DEVELOPMENT REVIEW-CENTRAL
 PLANNING, DEVELOPMENT AND BUILDING SERVICES
 DEPARTMENT, CITY OF OTTAWA



DRAFT PLAN OF SUBDIVISION OF

**PART OF LOTS 38, 39 AND 40
 CONCESSION A (OTTAWA FRONT)
 PART OF THE BED OF THE OTTAWA RIVER
 IN FRONT OF LOT 38 & LOT 39,
 CONCESSION A (OTTAWA FRONT)
 PART OF DUCK ISLAND
 IN FRONT OF LOT 38,
 CONCESSION A (OTTAWA FRONT)
 PART OF PRESTON STREET
 (CLOSED BY BY-LAW OC1899021)
 (GEOGRAPHIC TOWNSHIP OF NEPEAN)
 PART OF BLOCKS A, B & C
 PART OF MILL STREET
 (CLOSED BY BY-LAW CR588482)
 PART ENGINE HOUSE AREA
 REGISTERED PLAN 60
 LOTS 1 & 2 AND PART OF LOTS 3, 4 & 5
 IN BLOCK E
 PART OF LOTS 1, 2 & 3
 IN BLOCK F
 LOTS 2 TO 12 (BOTH INCLUSIVE)
 IN BLOCK G
 LOTS 2, 4, 6, 8, 10 & 11 AND PART OF LOTS
 3, 5, 7, 9 & 12
 IN BLOCK H
 LOT 4 AND PART OF LOTS 1, 2 & 3
 IN BLOCK S
 LOTS 1 & 4 AND PART OF LOTS 2 & 3
 IN BLOCK T
 PART OF THE LANE AT REAR OF BLOCK S
 THE LANE AT REAR OF BLOCK T
 (CLOSED BY BY-LAW LT1243121)
 PART OF BROAD STREET
 (CLOSED BY BY-LAW LT1243121)
 PART OF BROAD STREET
 (CLOSED BY BY-LAW LT1243121)
 PART OF FLEET STREET
 (FORMERLY QUEEN STREET)
 (CLOSED BY BY-LAW LT1243121)
 PART OF OTTAWA STREET
 (CLOSED BY BY-LAW LT1243121)
 PART OF SHERWOOD STREET
 (CLOSED BY BY-LAW CR2800191)
 REGISTERED PLAN 2
 LOTS A, B, C & D
 REGISTERED PLAN 31129
 CITY OF OTTAWA**



Scale 1:1000
 METRIC CONVERSION
 DIMENSIONS AND COORDINATES SHOWN ON THIS PLAN ARE IN METRES AND CAN BE CONVERTED TO FEET BY DIVIDING BY 0.3048

STAIRIA NOTE:
 THIS PLAN IS STRATIFIED TO SHOW HCC AIR RIGHTS ON BLOCK 20

ADDITIONAL INFORMATION REQUIRED UNDER SECTION 51 OF THE PLANNING ACT:
 (A) AS SHOWN ON DRAFT PLAN
 (B) AS SHOWN ON DRAFT PLAN
 (C) AS SHOWN ON DRAFT PLAN
 (D) AS SHOWN ON DRAFT PLAN
 (E) AS SHOWN ON DRAFT PLAN
 (F) AS SHOWN ON DRAFT PLAN
 (G) AS SHOWN ON DRAFT PLAN
 (H) AS SHOWN ON DRAFT PLAN
 (I) AS SHOWN ON DRAFT PLAN
 (J) AS SHOWN ON DRAFT PLAN

LAND USE

NUMBER OF RESIDENTIAL BLOCKS:	4
NUMBER OF COMMERCIAL OR MIXED USE BLOCKS:	11
NUMBER OF LANES:	7
NUMBER OF PUBLIC ROADS:	6
NUMBER OF PARKS:	2
AREA OF DEVELOPMENT BLOCKS (1-17):	9,504 m ²
AREA OF PARKS (BLOCKS 18-19):	9,315 m ²
AREA OF LANES:	5,669 m ²
AREA OF PUBLIC ROADS:	1,995 m ²
TOTAL AREA OF SUBDIVISION =	21,484 m²

OWNER'S CERTIFICATE
 I HEREBY AUTHORIZE STANTEC GEOMATICS LTD. TO SUBMIT THIS DRAFT PLAN OF SUBDIVISION ON MY BEHALF.

DATE: _____

I HAVE THE AUTHORITY TO SIGN THE CORPORATION

SURVEYOR'S CERTIFICATE
 I HEREBY CERTIFY THAT THE BOUNDARIES OF THE SUBJECT LANDS AND THEIR RELATIONSHIP TO ADJOINING LANDS HAVE BEEN ACCURATELY AND CORRECTLY SHOWN.

DATE: _____

FRANCIS LAU
 CHIEF MEASURING SUPERVISOR

Stantec
 CANADA LAND SERVICES
 100 GILLES AVENUE, SUITE 300
 OTTAWA, ONTARIO, K1G 3G4
 TEL: (416) 772-4452
 WWW.STANTEC.COM

DRAWN: ME CHECKED: _____ DATE: August 28, 2024 PROJECT NO.: 18047100-11