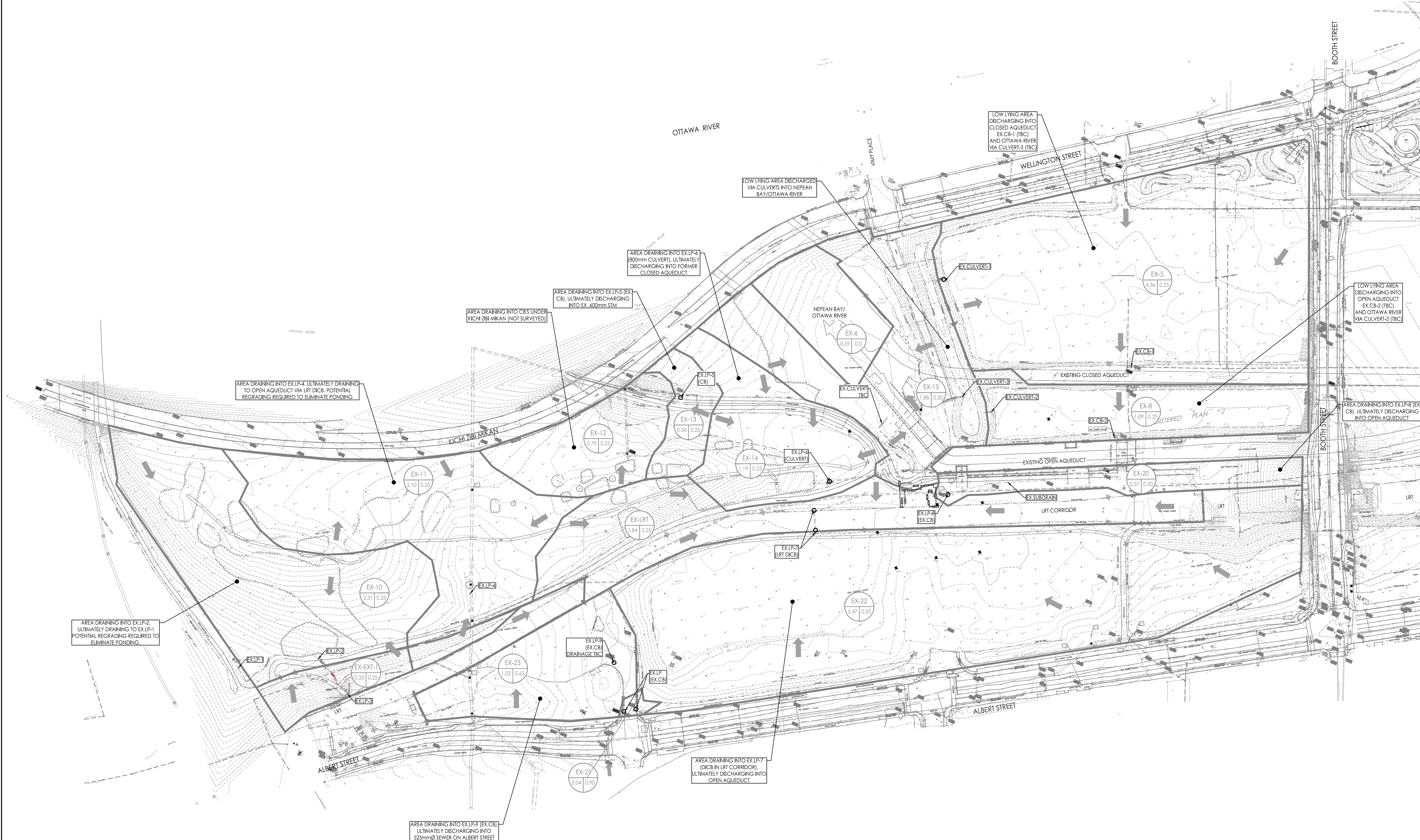
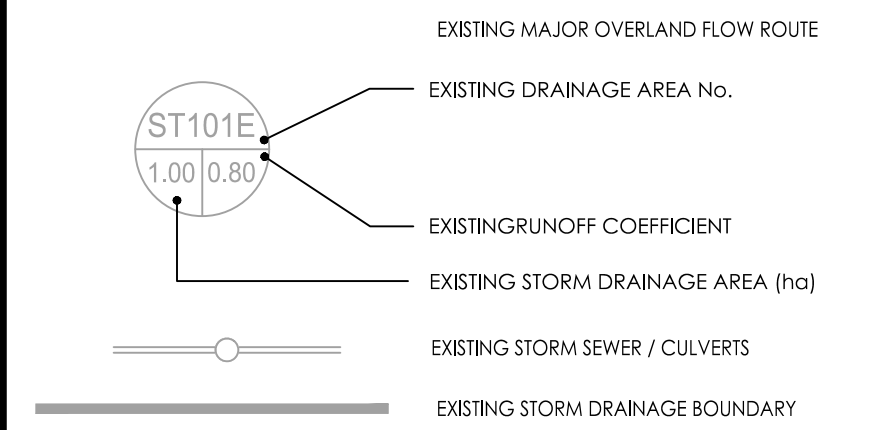




Copyright Reserved

The Contractor shall verify and be responsible for all dimensions. DO NOT scale the drawing - any errors or omissions shall be reported to Stantec without delay.
The Copyrights to all designs and drawings are the property of Stantec. Reproduction or use for any purpose other than that authorized by Stantec is forbidden.

Legend



Notes

PRELIMINARY
NOT TO BE USED FOR CONSTRUCTION

| | | | | |
|----------|------------------------------------|----|-------|----------|
| 1 | DRAFT PLAN APPROVAL 1ST SUBMISSION | JP | KS | 24.07.19 |
| Revision | | By | Appd. | YY.MM.DD |

| | | | | | |
|------------|-------------------|------|-------|------|----------|
| File Name: | 160401780-FSR.dwg | JP | DT | JP | 24.06.10 |
| | | Dwn. | Chkd. | Dgn. | YY.MM.DD |

Permit-Seal

Client/Project
NCC (NATIONAL CAPITAL COMMISSION)
40 Elgin Street, Suite 202
OTTAWA, ON, K1P 1C7
LEBRETON FLATS DRAFT PLAN OF SUBDIVISION

Title
EXISTING STORM DRAINAGE PLAN

| | | | | | |
|-------------|--------|----------|----|----|-----|
| Project No. | Scale | 0 | 15 | 45 | 75m |
| 160401780 | 1:1500 | | | | |
| Drawing No. | Sheet | Revision | | | |

EX-STM-1 1 of 8 1



Copyright Reserved

The Contractor shall verify and be responsible for all dimensions. DO NOT scale the drawing - any errors or omissions shall be reported to Stantec without delay.
The Copyrights to all designs and drawings are the property of Stantec. Reproduction or use for any purpose other than that authorized by Stantec is forbidden.

Legend

- MAJOR OVERLAND FLOW ROUTE
- EXISTING MAJOR OVERLAND FLOW ROUTE
- DRAINAGE AREA No.
RUNOFF COEFFICIENT
- STORM DRAINAGE AREA (ha)
- STORM DRAINAGE BOUNDARY
- PROPOSED STORM SEWER
- EXISTING STORM SEWER
- EXISTING STORM SEWER REMOVED/RELOCATED BY OTHERS
- POTENTIAL FILTER MTD (JELLYFISH) LOCATION TO BE CONFIRMED AT DETAILED DESIGN

Notes

PRELIMINARY
NOT TO BE USED FOR CONSTRUCTION

| Revision | By | Appd. | YY.MM.DD |
|----------|----|-------|----------|
| 1 | JP | KS | 24.07.19 |

| File Name: | JP | DT | JP | 24.06.10 |
|-------------------|------|-------|------|----------|
| 160401780-FSR.dwg | Dwn. | Chkd. | Dgn. | YY.MM.DD |

Permit-Seal

Client/Project
NCC (NATIONAL CAPITAL COMMISSION)
40 Elgin Street, Suite 202
OTTAWA, ON, K1P 1C7
LEBRETON FLATS DRAFT PLAN OF SUBDIVISION

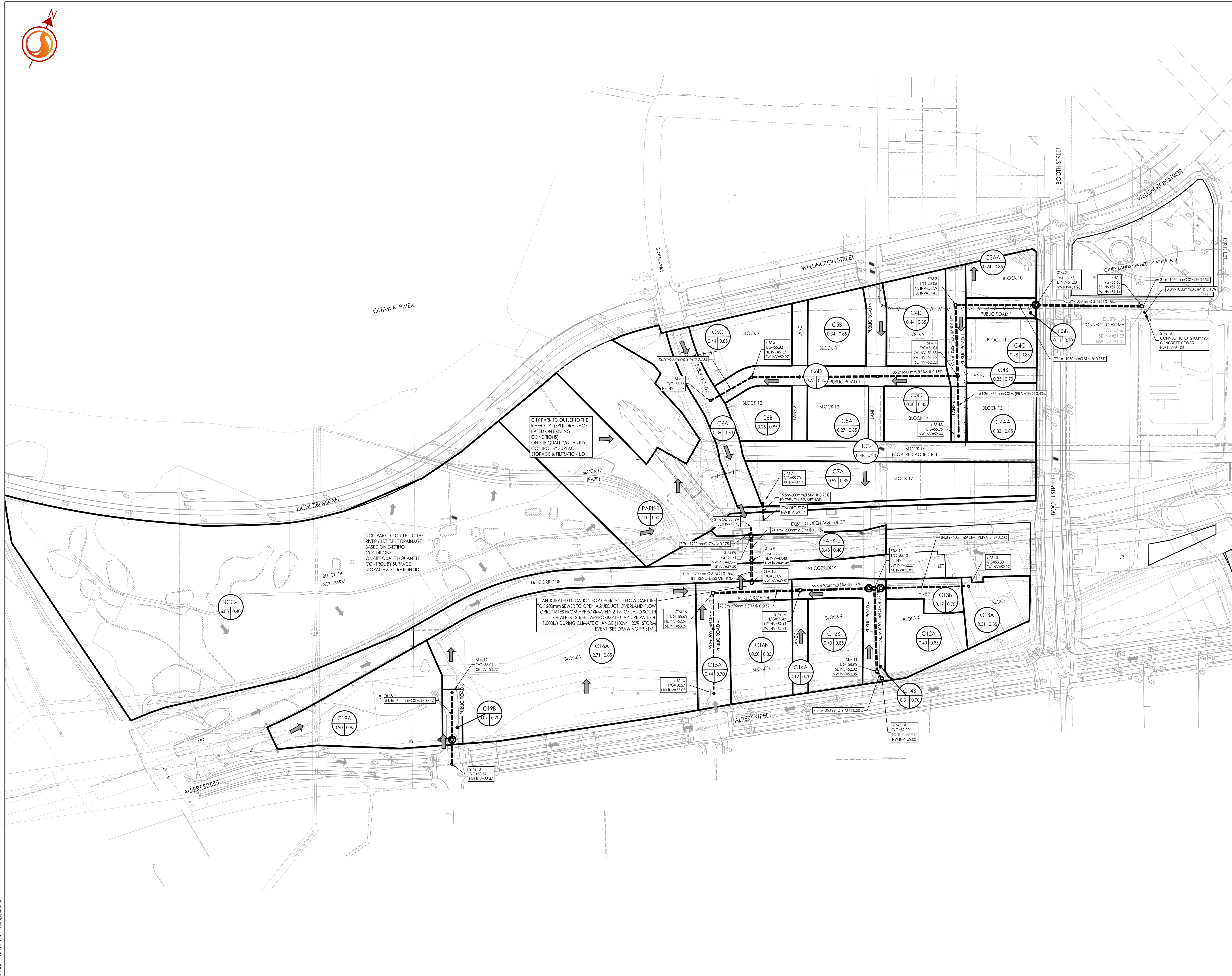
Title
FUNCTIONAL STORM SEWER SYSTEM

| Project No. | Scale | Sheet | Revision |
|-------------|--------|-------------|----------|
| 160401780 | 1:1500 | 0 15 45 75m | |
| Drawing No. | Sheet | Revision | |

STM-1 2 of 8 1

W:\active\160401780\design\1_Civil\drawing\Draft_Plan\160401780-FSR.dwg
24/06/2024 12:53:12 PM by P. J. Poirier, J. Poirier

ORIGINAL SHEET - ARCH-D





Copyright Reserved
The Contractor shall verify and be responsible for all dimensions. DO NOT scale the drawing - any errors or omissions shall be reported to Stantec without delay.
The Copyrights to all designs and drawings are the property of Stantec. Reproduction or use for any purpose other than that authorized by Stantec is forbidden.

Legend

- CONCEPTUAL PUMP STATION
- PROPOSED SANITARY SEWER
- SANITARY DRAINAGE BOUNDARY
- EXISTING SANITARY SEWER
- EXISTING SANITARY SEWER REMOVED/TO BE REMOVED

Area ID

- R400A
0.50 50
POPULATION
- C400A
0.50 COM
COMMERCIAL FLOOR RATES USED

Sanitary Drainage Area (ha)

- SANITARY DRAINAGE AREA (ha)

Notes

PRELIMINARY
NOT TO BE USED FOR CONSTRUCTION

| Revision | By | Appd. | YY.MM.DD |
|----------|----|-------|----------|
| 1 | JP | KS | 24.07.19 |

| File Name: | JP | DT | JP | 24.06.10 |
|-------------------|------|-------|------|----------|
| 160401780-FSR.dwg | Dwn. | Chkd. | Dgn. | YY.MM.DD |

Client/Project
NCC (NATIONAL CAPITAL COMMISSION)
40 Elgin Street, Suite 202
OTTAWA, ON, K1P 1C7
LEBRETON FLATS DRAFT PLAN OF SUBDIVISION

Title
FUNCTIONAL SANITARY SEWER SYSTEM

| | | | |
|--------------------------|-----------------|-----------------|---------------|
| Project No. 160401780 | Scale 1:1500 | Sheet 3 of 8 | Revision 1 |
|--------------------------|-----------------|-----------------|---------------|



W:\active\160401780\design\1_CNV\drawing\Draft_Plan\160401780-FSR.dwg
2024/07/23 4:22 PM by P. Robins, J. J. J. J.



Copyright Reserved
The Contractor shall verify and be responsible for all dimensions. DO NOT scale the drawing - any errors or omissions shall be reported to Stantec without delay.
The Copyrights to all designs and drawings are the property of Stantec. Reproduction or use for any purpose other than that authorized by Stantec is forbidden.

Legend

| | |
|--|---------------------------------|
| | 305mmØ WATERMAIN |
| | 203mmØ WATERMAIN |
| | EX. WATERMAIN |
| | EX. WATERMAIN REMOVED/RELOCATED |

Notes

PRELIMINARY
NOT TO BE USED FOR CONSTRUCTION

| | | | | |
|----------|------------------------------------|----|-------|----------|
| 1 | DRAFT PLAN APPROVAL 1ST SUBMISSION | JP | KS | 24.07.19 |
| Revision | | By | Appd. | YY.MM.DD |

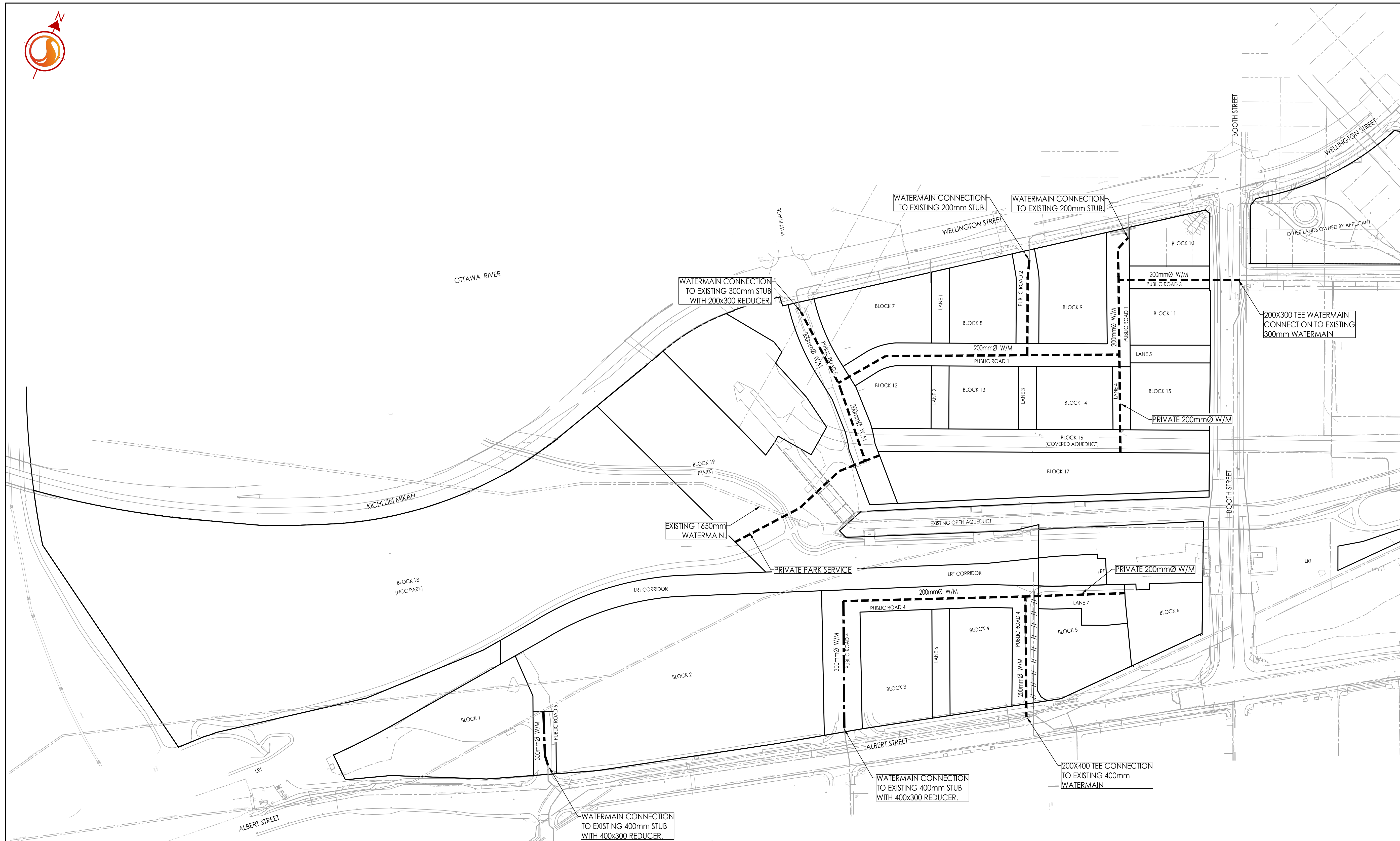
| | | | | | |
|------------|-------------------|------|-------|------|----------|
| File Name: | 160401780-FSR.dwg | JP | DT | JP | 24.06.10 |
| | | Dwn. | Chkd. | Dgn. | YY.MM.DD |

Permit-Seal

Client/Project
NCC (NATIONAL CAPITAL COMMISSION)
40 Elgin Street, Suite 202
OTTAWA, ON, K1P 1C7
LEBRETON FLATS DRAFT PLAN OF SUBDIVISION

Title
FUNCTIONAL WATERMAIN SYSTEM

| | | | |
|-------------|-----------|----------|--------|
| Project No. | 160401780 | Scale | 1:1500 |
| Drawing No. | Sheet | Revision | |





Copyright Reserved

The Contractor shall verify and be responsible for all dimensions. DO NOT scale the drawing - any errors or omissions shall be reported to Stantec without delay.
The Copyrights to all designs and drawings are the property of Stantec. Reproduction or use for any purpose other than that authorized by Stantec is forbidden.

Legend

- ✕ 89.40 EXISTING ELEVATION
- ✕ 89.40 PROPOSED ELEVATION
- ➔ MAJOR OVERLAND FLOW ROUTE
- ➔ EXISTING MAJOR OVERLAND FLOW ROUTE

Notes

PRELIMINARY
NOT TO BE USED FOR CONSTRUCTION

| | | | | |
|----------|------------------------------------|----|-------|----------|
| 1 | DRAFT PLAN APPROVAL 1ST SUBMISSION | JP | KS | 24.07.19 |
| Revision | | By | Appd. | YY.MM.DD |

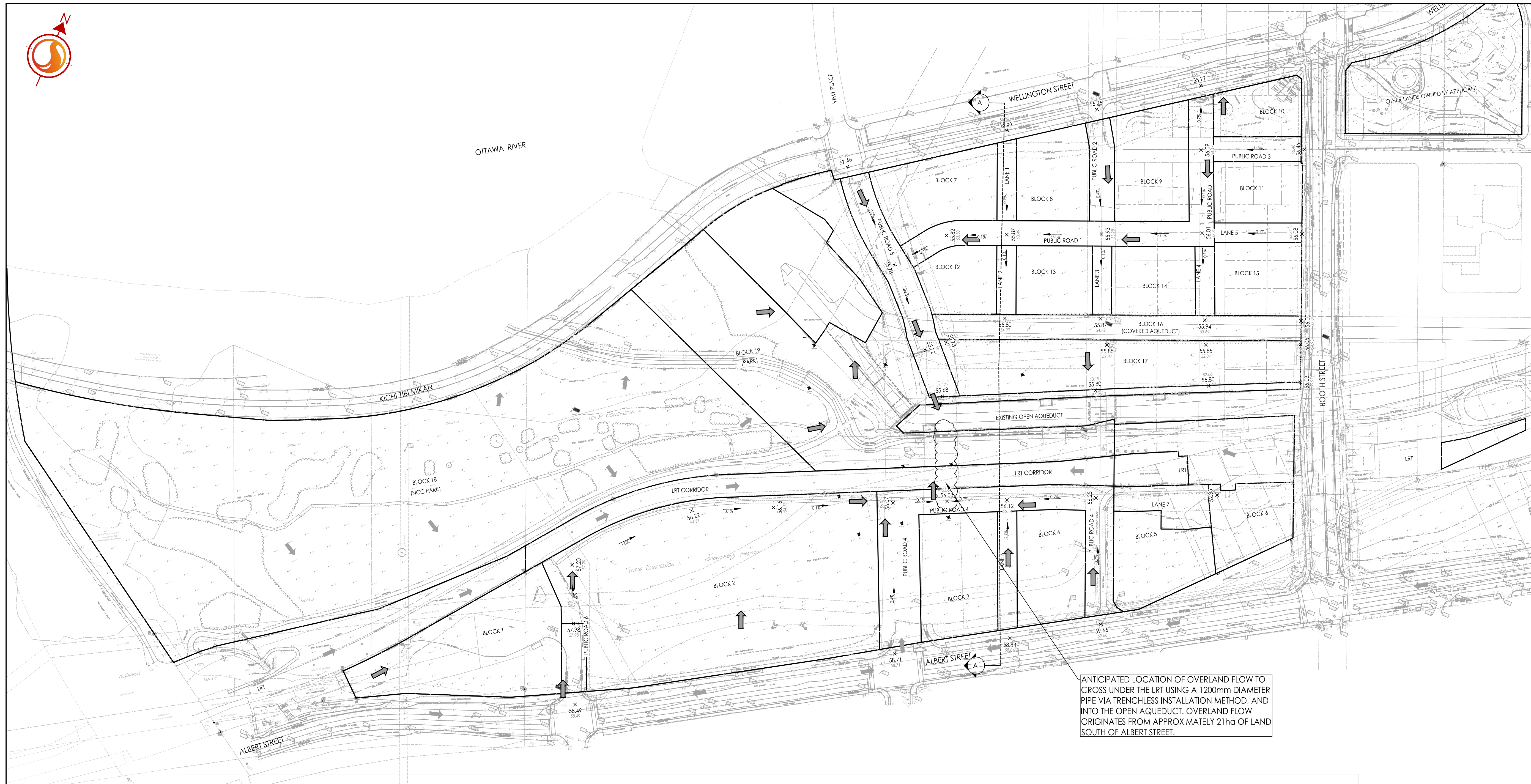
| | | | | | |
|------------|-------------------|------|-------|------|----------|
| File Name: | 160401780-FSR.dwg | JP | DT | JP | 24.06.10 |
| | | Dwn. | Chkd. | Dgn. | YY.MM.DD |

Permit-Seal

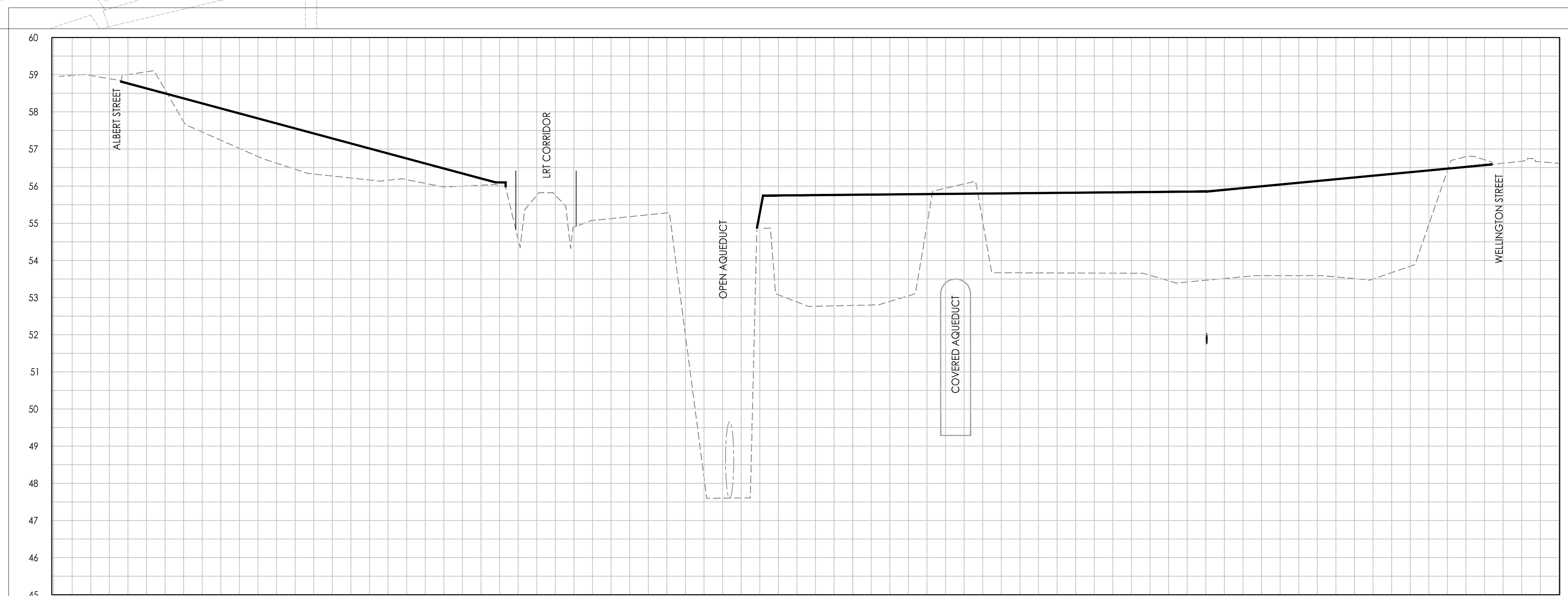
Client/Project
NCC (NATIONAL CAPITAL COMMISSION)
40 Elgin Street, Suite 202
OTTAWA, ON, K1P 1C7
LEBRETON FLATS DRAFT PLAN OF SUBDIVISION

Title
FUNCTIONAL GRADE CONTROL PLAN

| | | | | | |
|-------------|--------|----------|----|----|-----|
| Project No. | Scale | 0 | 15 | 45 | 75m |
| 160401780 | 1:1500 | | | | |
| Drawing No. | Sheet | Revision | | | |



ANTICIPATED LOCATION OF OVERLAND FLOW TO CROSS UNDER THE LRT USING A 1200mm DIAMETER PIPE VIA TRENCHLESS INSTALLATION METHOD, AND INTO THE OPEN AQUEDUCT. OVERLAND FLOW ORIGINATES FROM APPROXIMATELY 21ha OF LAND SOUTH OF ALBERT STREET.



SECTION A-A



Copyright Reserved

The Contractor shall verify and be responsible for all dimensions. DO NOT locate this drawing - any errors or omissions shall be reported to Stantec without delay. The Copyrights to all designs and drawings are the property of Stantec. Reproduction or use for any purpose other than that authorized by Stantec is forbidden.

Legend

- EXISTING TOPO ELEVATION
- 89.40 x PROPOSED ELEVATIONS
- 89.40 EXISTING SUB-DIVISION ELEVATIONS
- PROPOSED MUD MAT LOCATION
- PROPOSED CATCH BASIN PROTECTION AS PER DETAIL (SILTSACK)
- PROPOSED LIGHT DUTY SILT FENCE BOUNDARY AS PER OPSD 219.110
- PROPOSED HEAVY DUTY SILT FENCE BOUNDARY AS PER OPSD 219.1300
- PROPOSED STRAW BALE LOCATION AS PER OPSD 219.180

Notes

- BEST MANAGEMENT PRACTICES**
- EROSION AND SEDIMENT CONTROLS (BEST MANAGEMENT PRACTICES) SHALL BE PROVIDED DURING CONSTRUCTION OF THIS PROJECT.
- EROSION MUST BE MINIMIZED AND SEDIMENT MUST BE REMOVED FROM CONSTRUCTION SITE RUN-OFF IN ORDER TO PROTECT DOWNSTREAM AREAS. DURING ALL CONSTRUCTION, EROSION AND SEDIMENTATION SHALL BE CONTROLLED BY THE FOLLOWING TEMPORARY MEASURES:
- LIMIT THE EXTENT OF EXPOSED SOILS AT ANY GIVEN TIME.
 - REVEGETATE EXPOSED AREAS AND SLOPES AS SOON AS POSSIBLE.
 - MANAGE AREA TO BE CLEARED AND GRUBBED.
 - PROTECT EXPOSED SLOPES WITH PLASTIC OR SYNTHETIC MULCHES.
 - INSTALL FILTER CLOTH BETWEEN FRAME AND COVER ON ALL PROPOSED CATCH BASINS AND CATCH BASIN MANHOLES AND ON ALL EXISTING CATCH BASINS THAT WILL RECEIVE RUN-OFF FROM THE SITE.
 - A SILT FENCE SHALL BE REVEALED AROUND THE PERIMETER OF ALL AND ANY STOCKPILES OF MATERIAL TO BE USED OR REMOVED FROM SITE (LOCATION TO BE DETERMINED).
 - A VISUAL INSPECTION SHALL BE DONE DAILY ON SEDIMENT CONTROL MEASURES AND CLEANED OF ANY ACCUMULATED SOIL AS REQUIRED. THE REPORTS WILL BE EXPOSED UP SITE AS PER THE REQUIREMENTS OF THE CONTRACT.
 - SEDIMENT CONTROL BARRIERS MAY ONLY BE REMOVED TEMPORARILY WITH APPROVAL OF CONTRACT ADMINISTRATOR TO ACCOMMODATE CONSTRUCTION OPERATIONS. ALL AFFECTED BARRIERS MUST BE REINSTATED AT NIGHT WHEN CONSTRUCTION IS COMPLETED. NO REMOVAL WILL OCCUR IF THERE IS A SIGNIFICANT RAINFALL EVENT ANTICIPATED (15mm) UNLESS A NEW DEVICE HAS BEEN INSTALLED TO PROTECT THE EXISTING STORM AND SANITARY SEWER SYSTEMS.
 - NO REFUELING OR CLEANING OF EQUIPMENT IS PERMITTED NEAR ANY EXISTING WATERWAY.
 - SEDIMENT CONTROL MEASURES SHALL BE REMOVED WHEN, IN THE OPINION OF THE CONTRACT ADMINISTRATOR, THE MEASURES IS NO LONGER REQUIRED. NO CONTROL MEASURES SHALL BE PERMANENTLY REMOVED WITHOUT WRITTEN AUTHORIZATION FROM THE CONTRACT ADMINISTRATOR.
 - THE CONTRACTOR SHALL PERIODICALLY, OR WHEN REQUESTED BY THE CONTRACT ADMINISTRATOR, CLEAN OUT ACCUMULATED SEDIMENT AS REQUIRED.
 - THE CONTRACTOR SHALL IMMEDIATELY REPORT TO THE ENGINEER ANY ACCIDENTAL DISCHARGES OF SEDIMENT MATERIAL INTO THE WATERCOURSE. APPROPRIATE RESPONSE MEASURES, INCLUDING ANY REPAIRS TO EXISTING CONTROL MEASURES OR THE IMPLEMENTATION OF ADDITIONAL CONTROL MEASURES, SHALL BE CARRIED OUT BY THE CONTRACTOR WITHOUT DELAY.

PRELIMINARY
NOT TO BE USED FOR CONSTRUCTION

| | | | | |
|----------|------------------------------------|----|-------|----------|
| 1 | DRAFT PLAN APPROVAL 1ST SUBMISSION | JP | KS | 24.07.19 |
| Revision | | By | Appd. | YY.MM.DD |

| | | | | | |
|------------|-------------------|------|-------|-------|----------|
| File Name: | 160401780-FSR.dwg | JP | DT | JP | 24.06.10 |
| | | Dwn. | Chkd. | Dsgn. | YY.MM.DD |

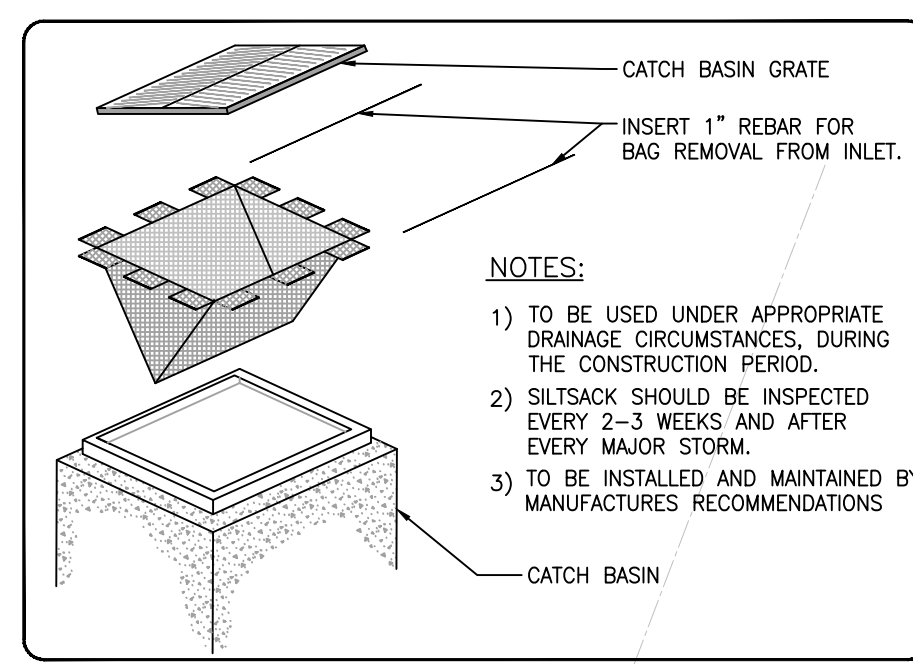
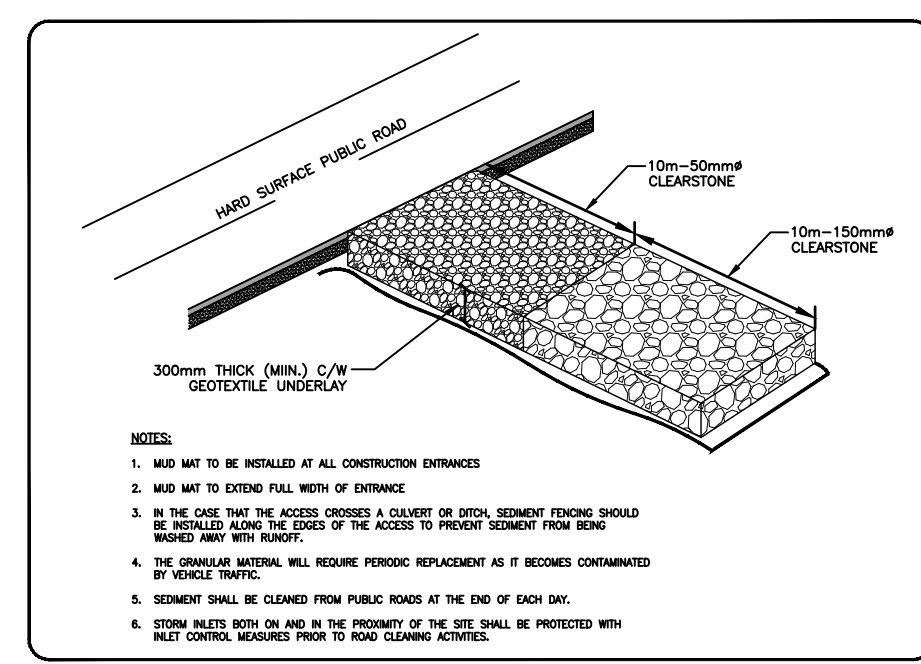
Permit-Seal

Client/Project
NCC (NATIONAL CAPITAL COMMISSION)
40 Elgin Street, Suite 202
OTTAWA, ON, K1P 1C7
LEBRETON FLATS DRAFT PLAN OF SUBDIVISION

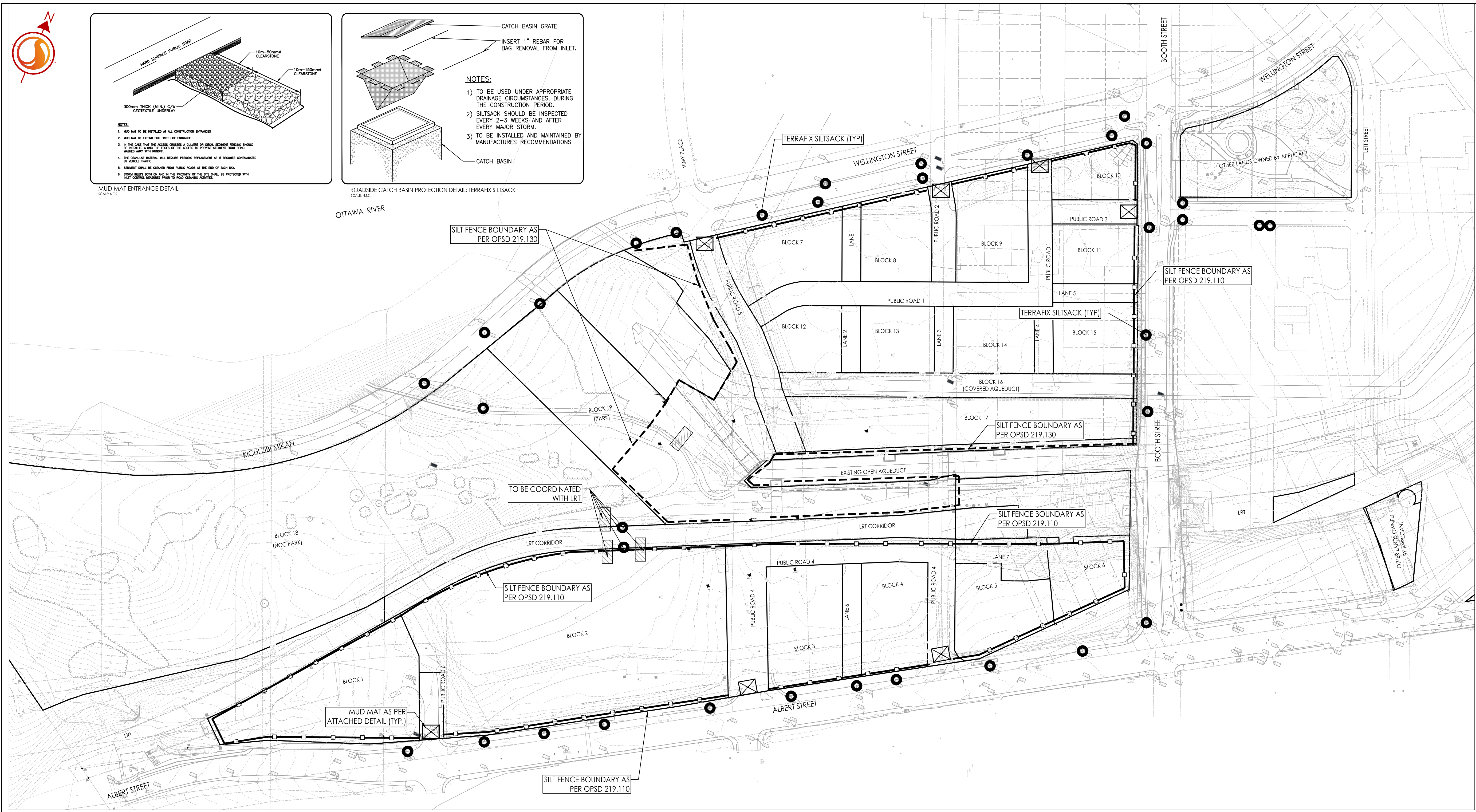
Title
EROSION AND SEDIMENT
CONTROL PLAN

| | | | | | |
|-------------|--------|----------|----|----|-----|
| Project No. | Scale | 0 | 15 | 45 | 75m |
| 160401780 | 1:1500 | | | | |
| Drawing No. | Sheet | Revision | | | |

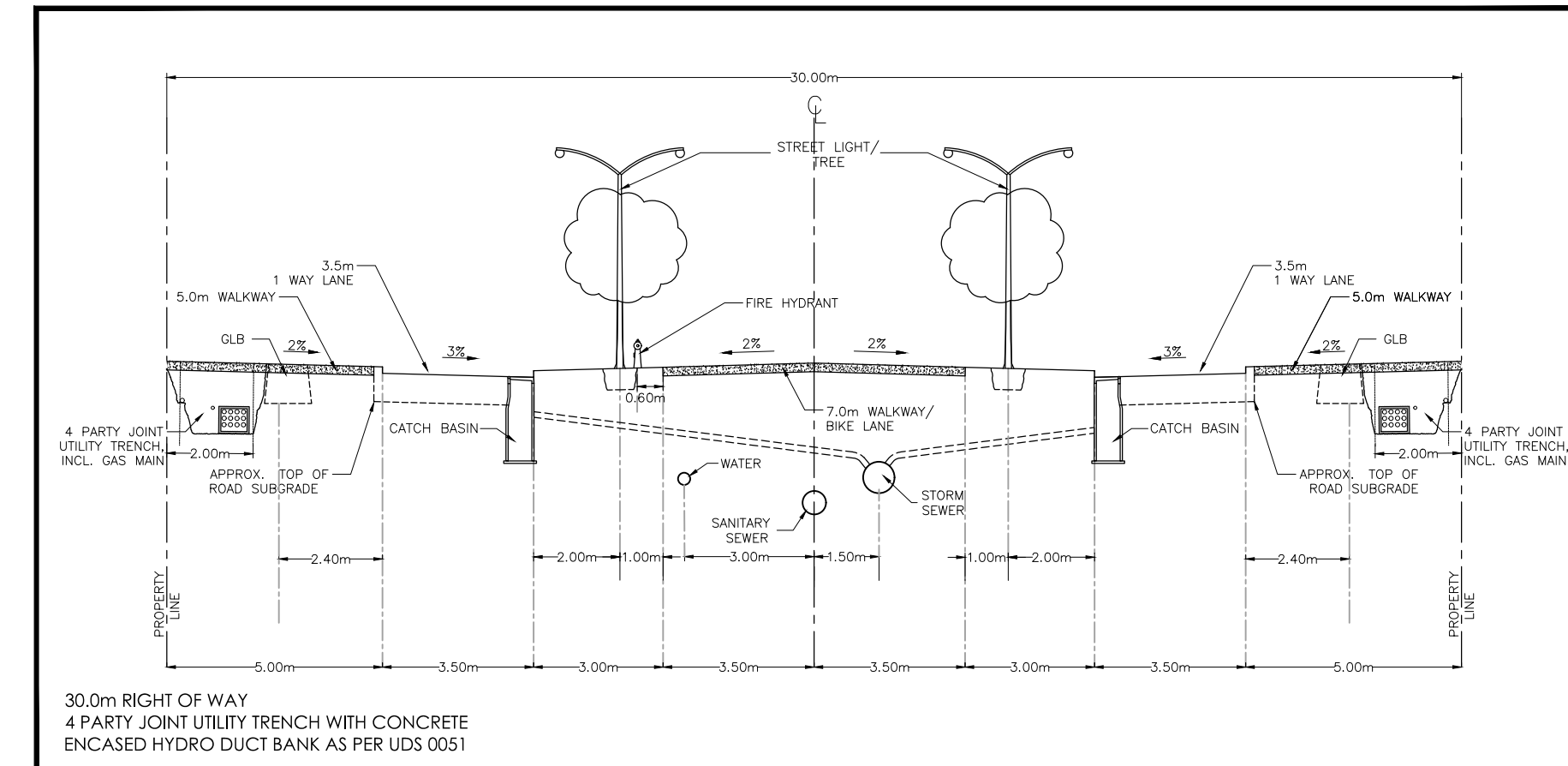
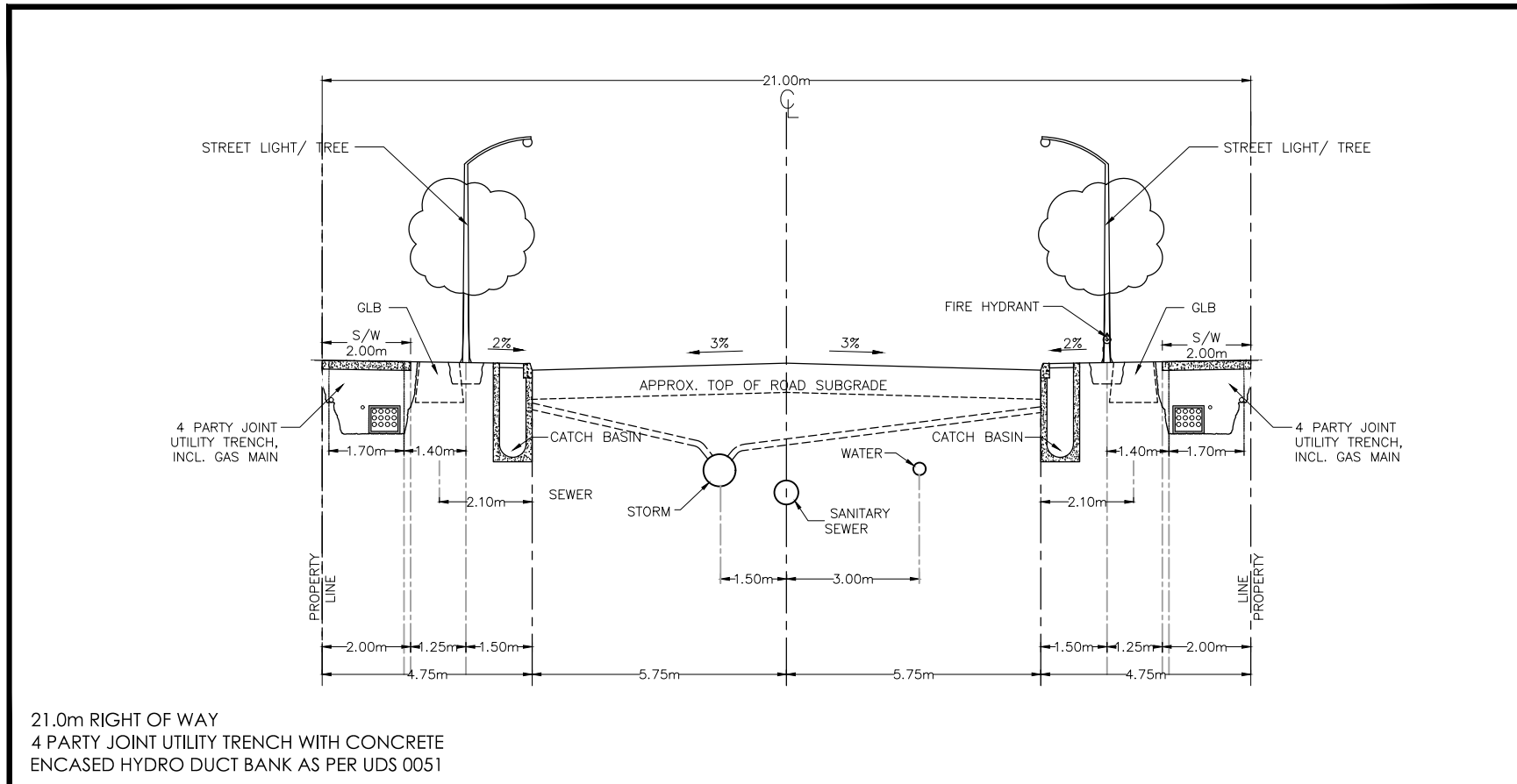
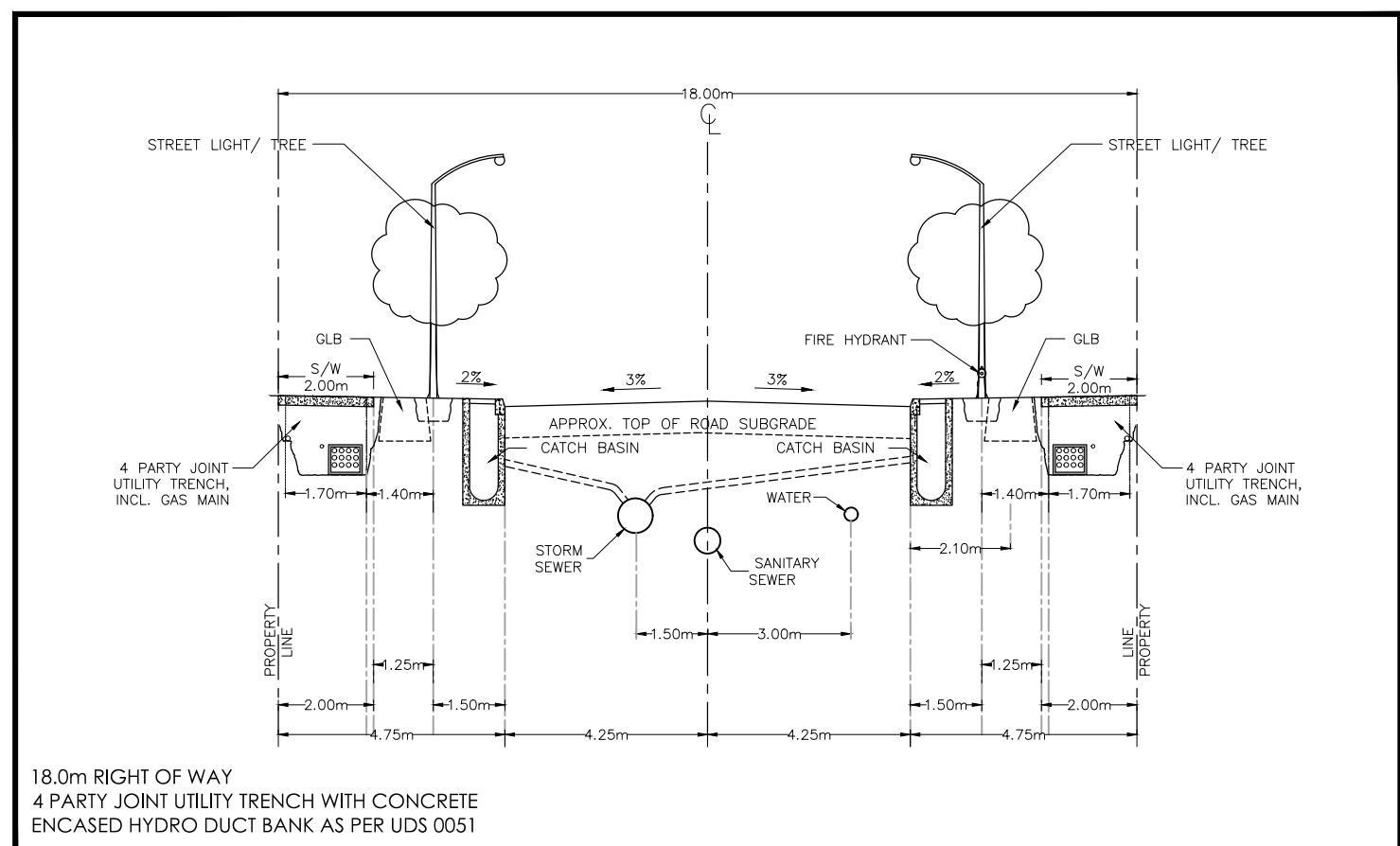
EC-1 6 of 8 1



- NOTES:
- TO BE USED UNDER APPROPRIATE DRAINAGE CIRCUMSTANCES, DURING THE CONSTRUCTION PERIOD.
 - SILTSACK SHOULD BE INSPECTED EVERY 2-3 WEEKS AND AFTER EVERY MAJOR STORM.
 - TO BE INSTALLED AND MAINTAINED BY MANUFACTURER'S RECOMMENDATIONS



W:\active\160401780\design\1_Civil\drawing\Draft_Plan\160401780-FSR.dwg
24/06/2024 4:25 PM by P.Bohling - Juper

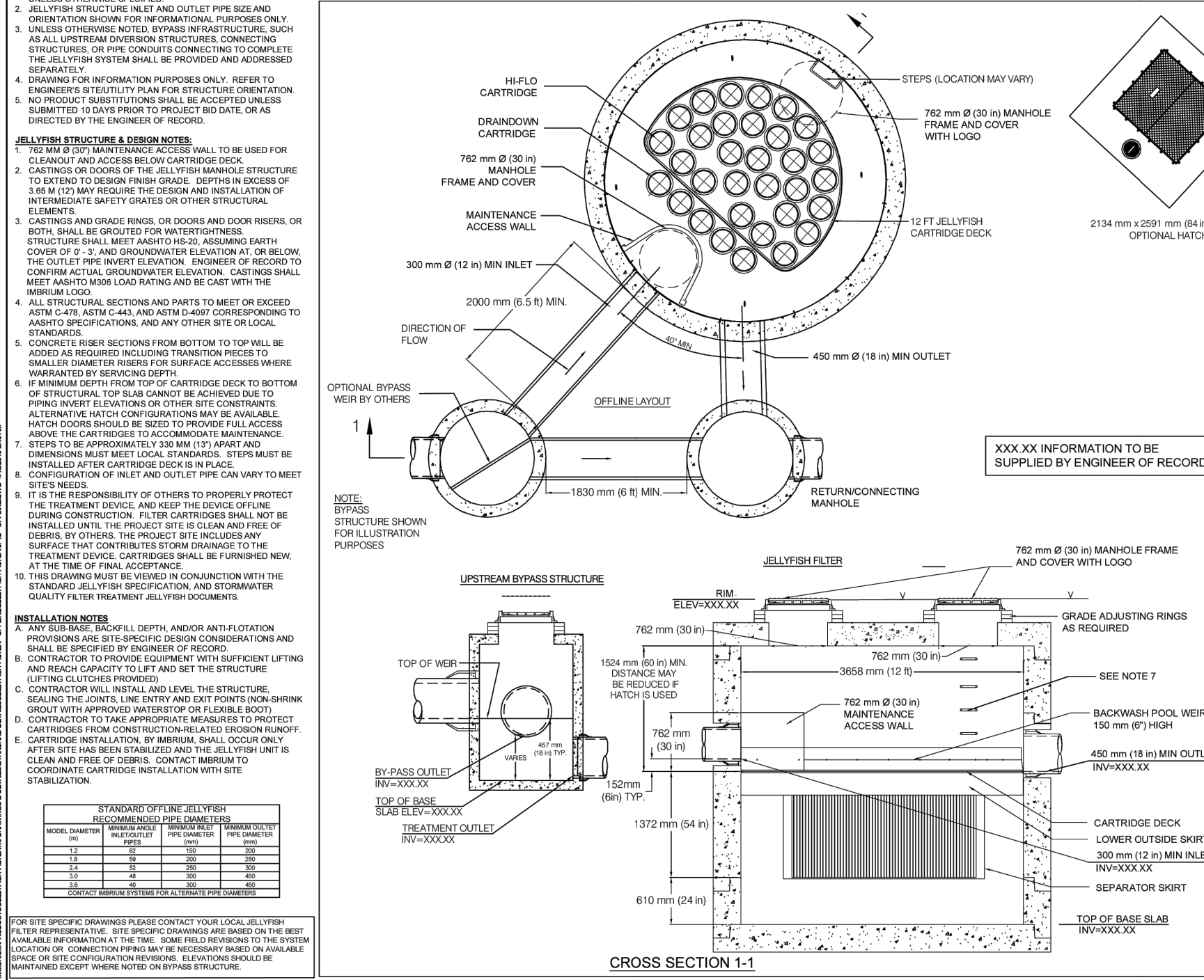


18.0m RIGHT OF WAY
4 PARTY JOINT UTILITY TRENCH WITH CONCRETE
ENCASED HYDRO DUCT BANK AS PER UDS 0051

21.0m RIGHT OF WAY
4 PARTY JOINT UTILITY TRENCH WITH CONCRETE
ENCASED HYDRO DUCT BANK AS PER UDS 0051

30.0m RIGHT OF WAY
4 PARTY JOINT UTILITY TRENCH WITH CONCRETE
ENCASED HYDRO DUCT BANK AS PER UDS 0051

DRAWING NOT TO BE USED FOR CONSTRUCTION



JELLYFISH FILTER - SPECIFICATIONS

GENERAL:

- The information quantity filter treatment device shall function to remove pollutants by the following unit performance process: sedimentation, flocculation and membrane filtration.
- The information quantity filter treatment device shall be constructed of materials that are resistant to corrosion and shall be suitable for outdoor use.
- The information quantity filter treatment device shall be designed to handle the maximum design flow rate and shall be capable of handling the maximum design solids loading.
- The information quantity filter treatment device shall be designed to handle the maximum design hydraulic loading rate.
- The information quantity filter treatment device shall be designed to handle the maximum design hydraulic loading rate.
- The information quantity filter treatment device shall be designed to handle the maximum design hydraulic loading rate.

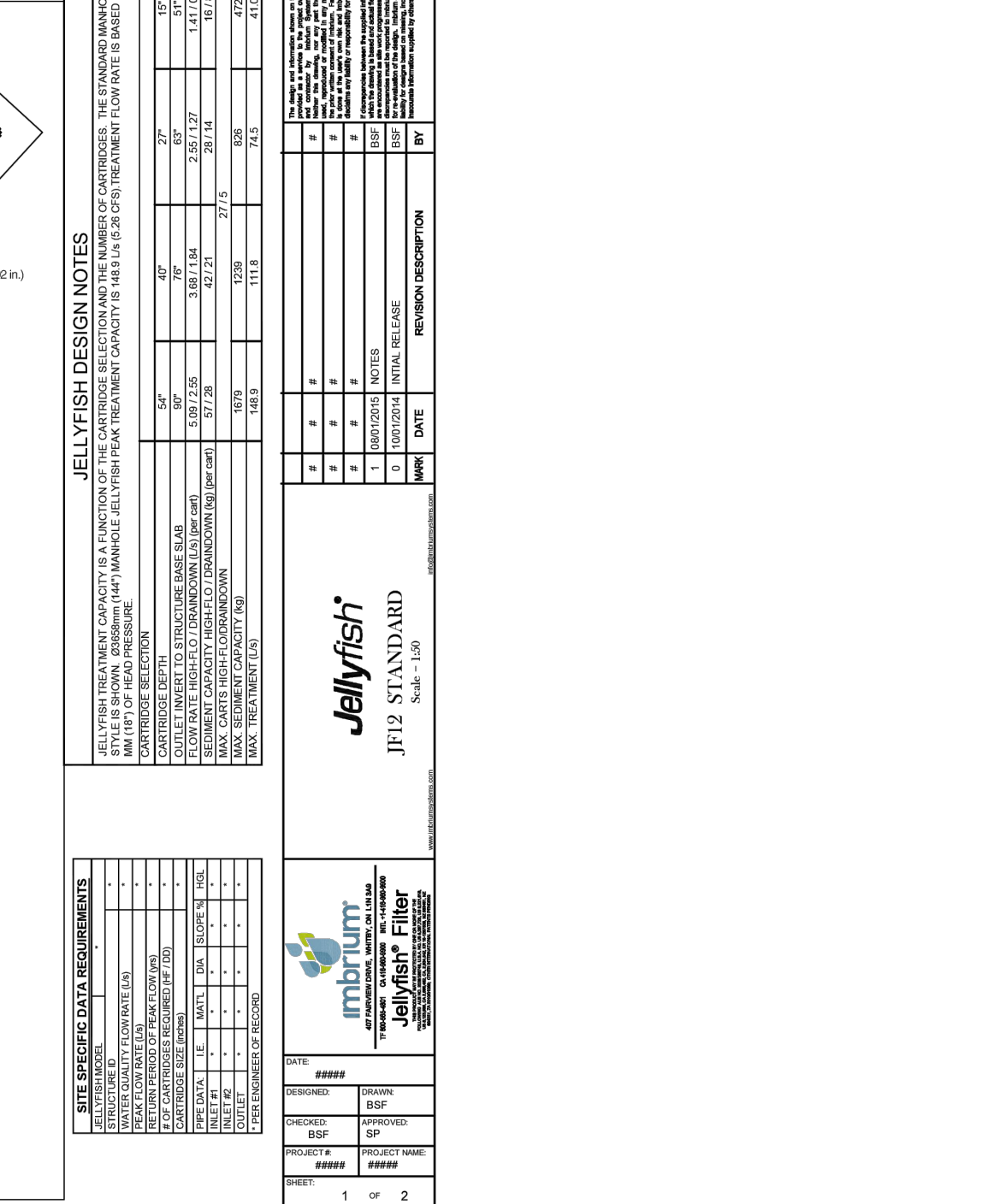
PERFORMANCE:

- The information quantity filter treatment device shall be designed to handle the maximum design flow rate and shall be capable of handling the maximum design solids loading.
- The information quantity filter treatment device shall be designed to handle the maximum design hydraulic loading rate.
- The information quantity filter treatment device shall be designed to handle the maximum design hydraulic loading rate.
- The information quantity filter treatment device shall be designed to handle the maximum design hydraulic loading rate.
- The information quantity filter treatment device shall be designed to handle the maximum design hydraulic loading rate.
- The information quantity filter treatment device shall be designed to handle the maximum design hydraulic loading rate.

INSTALLATION:

- The information quantity filter treatment device shall be installed in accordance with the manufacturer's instructions.
- The information quantity filter treatment device shall be installed in accordance with the manufacturer's instructions.
- The information quantity filter treatment device shall be installed in accordance with the manufacturer's instructions.
- The information quantity filter treatment device shall be installed in accordance with the manufacturer's instructions.
- The information quantity filter treatment device shall be installed in accordance with the manufacturer's instructions.
- The information quantity filter treatment device shall be installed in accordance with the manufacturer's instructions.

DRAWING NOT TO BE USED FOR CONSTRUCTION



JELLYFISH FILTER - SPECIFICATIONS

GENERAL:

- The information quantity filter treatment device shall function to remove pollutants by the following unit performance process: sedimentation, flocculation and membrane filtration.
- The information quantity filter treatment device shall be constructed of materials that are resistant to corrosion and shall be suitable for outdoor use.
- The information quantity filter treatment device shall be designed to handle the maximum design flow rate and shall be capable of handling the maximum design solids loading.
- The information quantity filter treatment device shall be designed to handle the maximum design hydraulic loading rate.
- The information quantity filter treatment device shall be designed to handle the maximum design hydraulic loading rate.
- The information quantity filter treatment device shall be designed to handle the maximum design hydraulic loading rate.

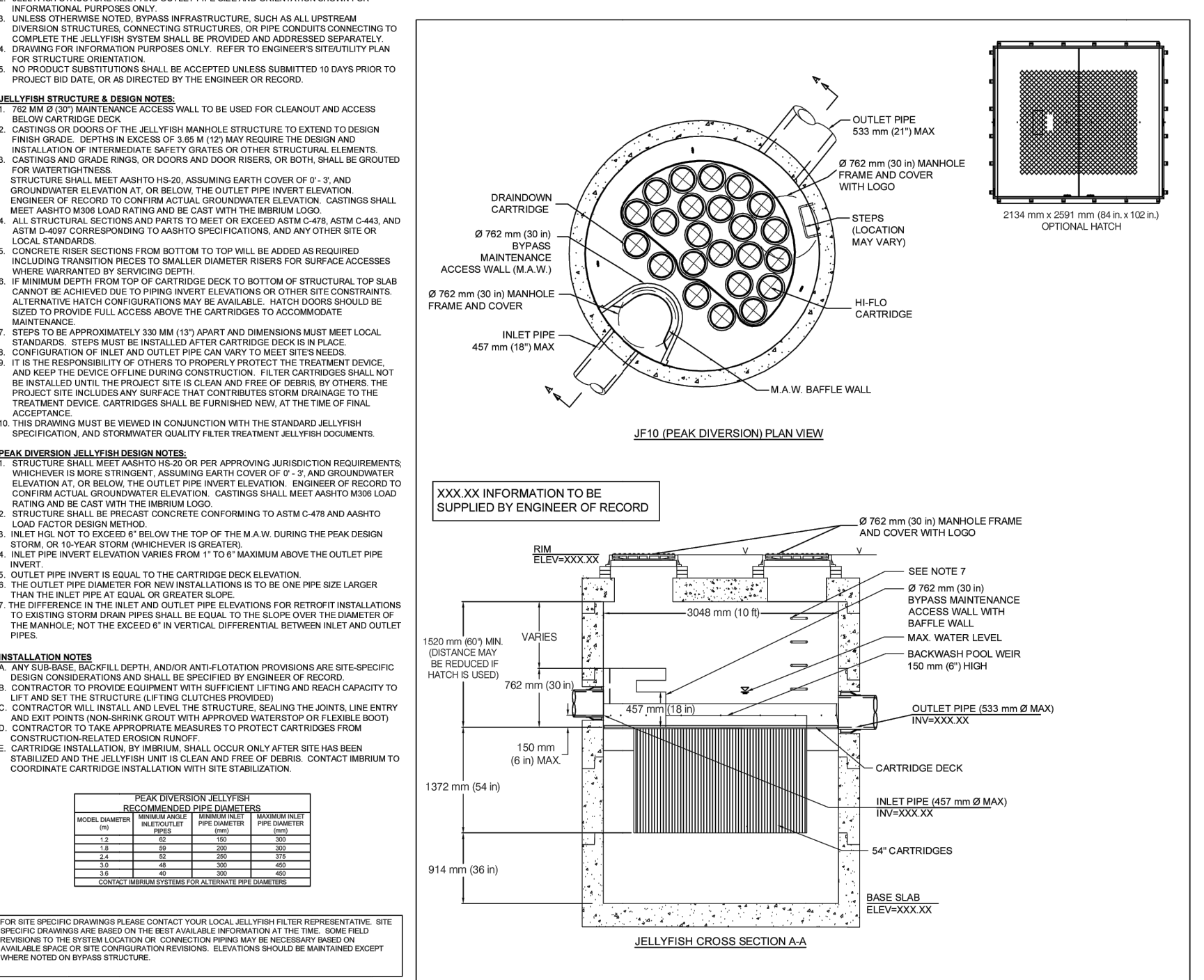
PERFORMANCE:

- The information quantity filter treatment device shall be designed to handle the maximum design flow rate and shall be capable of handling the maximum design solids loading.
- The information quantity filter treatment device shall be designed to handle the maximum design hydraulic loading rate.
- The information quantity filter treatment device shall be designed to handle the maximum design hydraulic loading rate.
- The information quantity filter treatment device shall be designed to handle the maximum design hydraulic loading rate.
- The information quantity filter treatment device shall be designed to handle the maximum design hydraulic loading rate.
- The information quantity filter treatment device shall be designed to handle the maximum design hydraulic loading rate.

INSTALLATION:

- The information quantity filter treatment device shall be installed in accordance with the manufacturer's instructions.
- The information quantity filter treatment device shall be installed in accordance with the manufacturer's instructions.
- The information quantity filter treatment device shall be installed in accordance with the manufacturer's instructions.
- The information quantity filter treatment device shall be installed in accordance with the manufacturer's instructions.
- The information quantity filter treatment device shall be installed in accordance with the manufacturer's instructions.
- The information quantity filter treatment device shall be installed in accordance with the manufacturer's instructions.

DRAWING NOT TO BE USED FOR CONSTRUCTION



JELLYFISH FILTER - SPECIFICATIONS

GENERAL:

- The information quantity filter treatment device shall function to remove pollutants by the following unit performance process: sedimentation, flocculation and membrane filtration.
- The information quantity filter treatment device shall be constructed of materials that are resistant to corrosion and shall be suitable for outdoor use.
- The information quantity filter treatment device shall be designed to handle the maximum design flow rate and shall be capable of handling the maximum design solids loading.
- The information quantity filter treatment device shall be designed to handle the maximum design hydraulic loading rate.
- The information quantity filter treatment device shall be designed to handle the maximum design hydraulic loading rate.
- The information quantity filter treatment device shall be designed to handle the maximum design hydraulic loading rate.

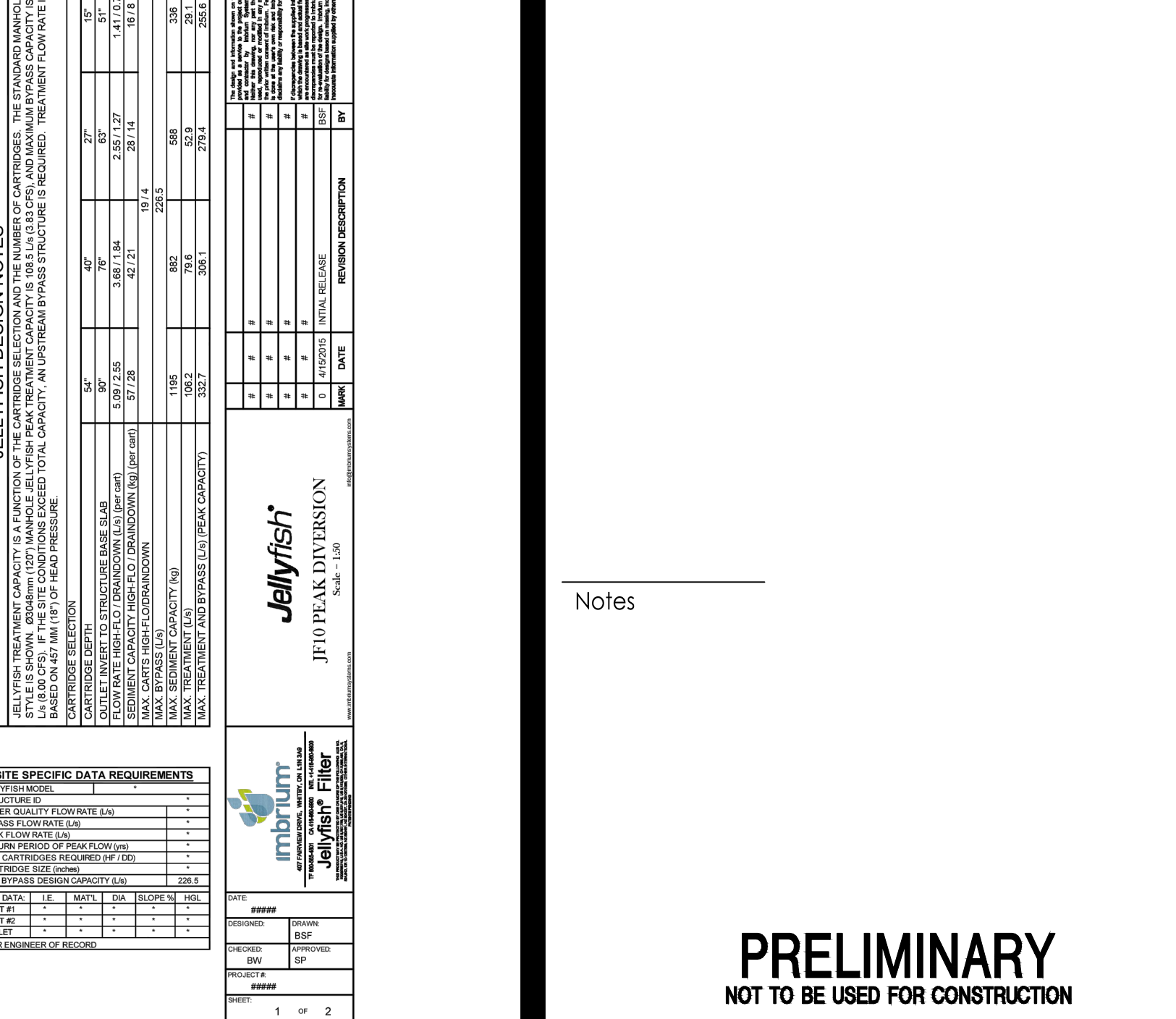
PERFORMANCE:

- The information quantity filter treatment device shall be designed to handle the maximum design flow rate and shall be capable of handling the maximum design solids loading.
- The information quantity filter treatment device shall be designed to handle the maximum design hydraulic loading rate.
- The information quantity filter treatment device shall be designed to handle the maximum design hydraulic loading rate.
- The information quantity filter treatment device shall be designed to handle the maximum design hydraulic loading rate.
- The information quantity filter treatment device shall be designed to handle the maximum design hydraulic loading rate.
- The information quantity filter treatment device shall be designed to handle the maximum design hydraulic loading rate.

INSTALLATION:

- The information quantity filter treatment device shall be installed in accordance with the manufacturer's instructions.
- The information quantity filter treatment device shall be installed in accordance with the manufacturer's instructions.
- The information quantity filter treatment device shall be installed in accordance with the manufacturer's instructions.
- The information quantity filter treatment device shall be installed in accordance with the manufacturer's instructions.
- The information quantity filter treatment device shall be installed in accordance with the manufacturer's instructions.
- The information quantity filter treatment device shall be installed in accordance with the manufacturer's instructions.

DRAWING NOT TO BE USED FOR CONSTRUCTION



JELLYFISH FILTER - SPECIFICATIONS

GENERAL:

- The information quantity filter treatment device shall function to remove pollutants by the following unit performance process: sedimentation, flocculation and membrane filtration.
- The information quantity filter treatment device shall be constructed of materials that are resistant to corrosion and shall be suitable for outdoor use.
- The information quantity filter treatment device shall be designed to handle the maximum design flow rate and shall be capable of handling the maximum design solids loading.
- The information quantity filter treatment device shall be designed to handle the maximum design hydraulic loading rate.
- The information quantity filter treatment device shall be designed to handle the maximum design hydraulic loading rate.
- The information quantity filter treatment device shall be designed to handle the maximum design hydraulic loading rate.

PERFORMANCE:

- The information quantity filter treatment device shall be designed to handle the maximum design flow rate and shall be capable of handling the maximum design solids loading.
- The information quantity filter treatment device shall be designed to handle the maximum design hydraulic loading rate.
- The information quantity filter treatment device shall be designed to handle the maximum design hydraulic loading rate.
- The information quantity filter treatment device shall be designed to handle the maximum design hydraulic loading rate.
- The information quantity filter treatment device shall be designed to handle the maximum design hydraulic loading rate.
- The information quantity filter treatment device shall be designed to handle the maximum design hydraulic loading rate.

INSTALLATION:

- The information quantity filter treatment device shall be installed in accordance with the manufacturer's instructions.
- The information quantity filter treatment device shall be installed in accordance with the manufacturer's instructions.
- The information quantity filter treatment device shall be installed in accordance with the manufacturer's instructions.
- The information quantity filter treatment device shall be installed in accordance with the manufacturer's instructions.
- The information quantity filter treatment device shall be installed in accordance with the manufacturer's instructions.
- The information quantity filter treatment device shall be installed in accordance with the manufacturer's instructions.

| | | | | |
|----------|------------------------------------|----|--------|----------|
| 1 | DRAFT PLAN APPROVAL 1ST SUBMISSION | JP | KS | 24.07.19 |
| Revision | | By | App'd. | YY.MM.DD |

| | | | | | |
|-------------|------------------|------|------|------|----------|
| File Name: | 16401780-FSR.dwg | JP | DT | JP | 24.06.10 |
| Permit-Seal | | Down | Chkd | Dsgn | YY.MM.DD |

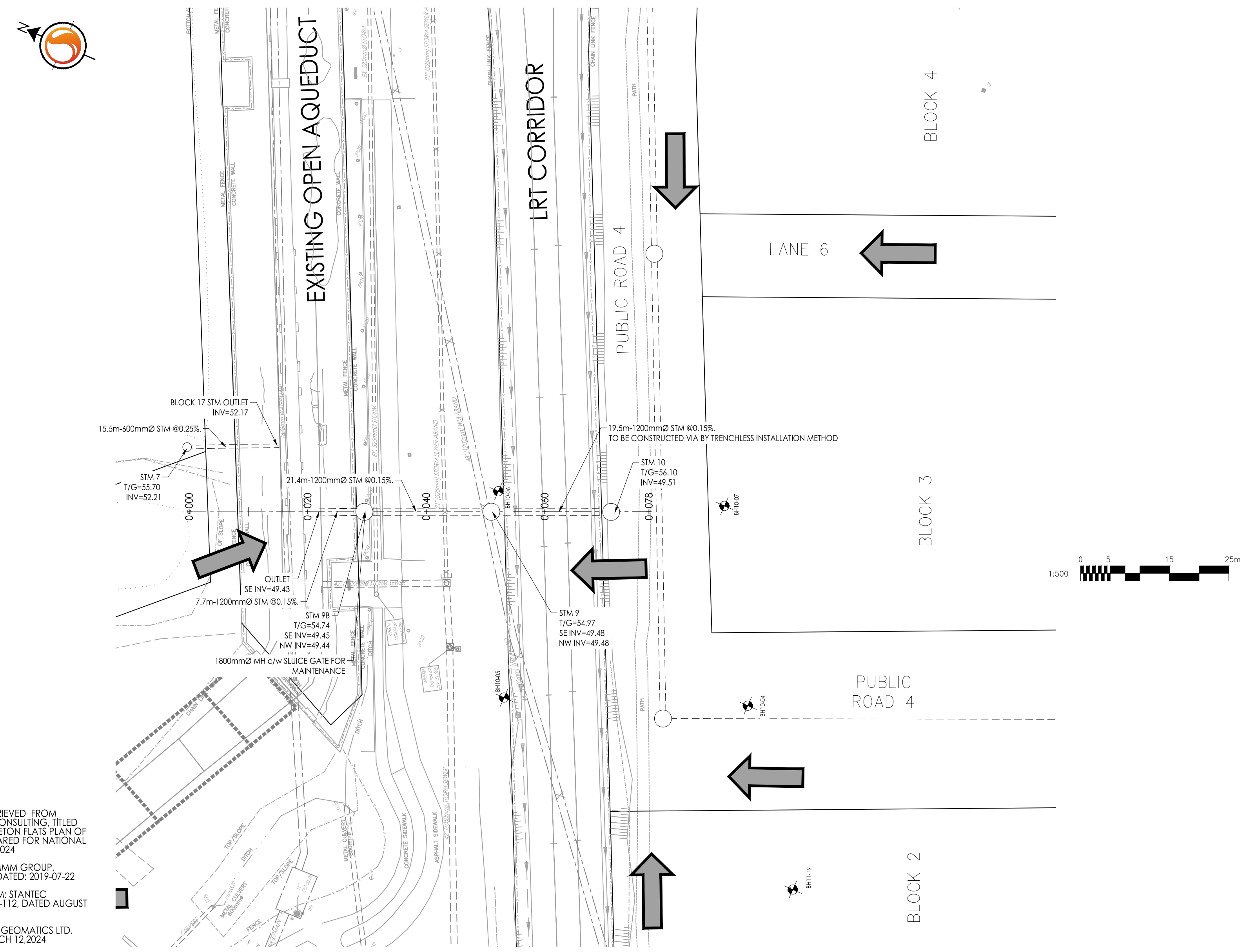
Client/Project
NCC (NATIONAL CAPITAL COMMISSION)
400 Elgin Street, Suite 202
OTTAWA, ON, K1P 1C7
LEBRETON FLATS DRAFT PLAN OF SUBDIVISION

DETAILS SHEET

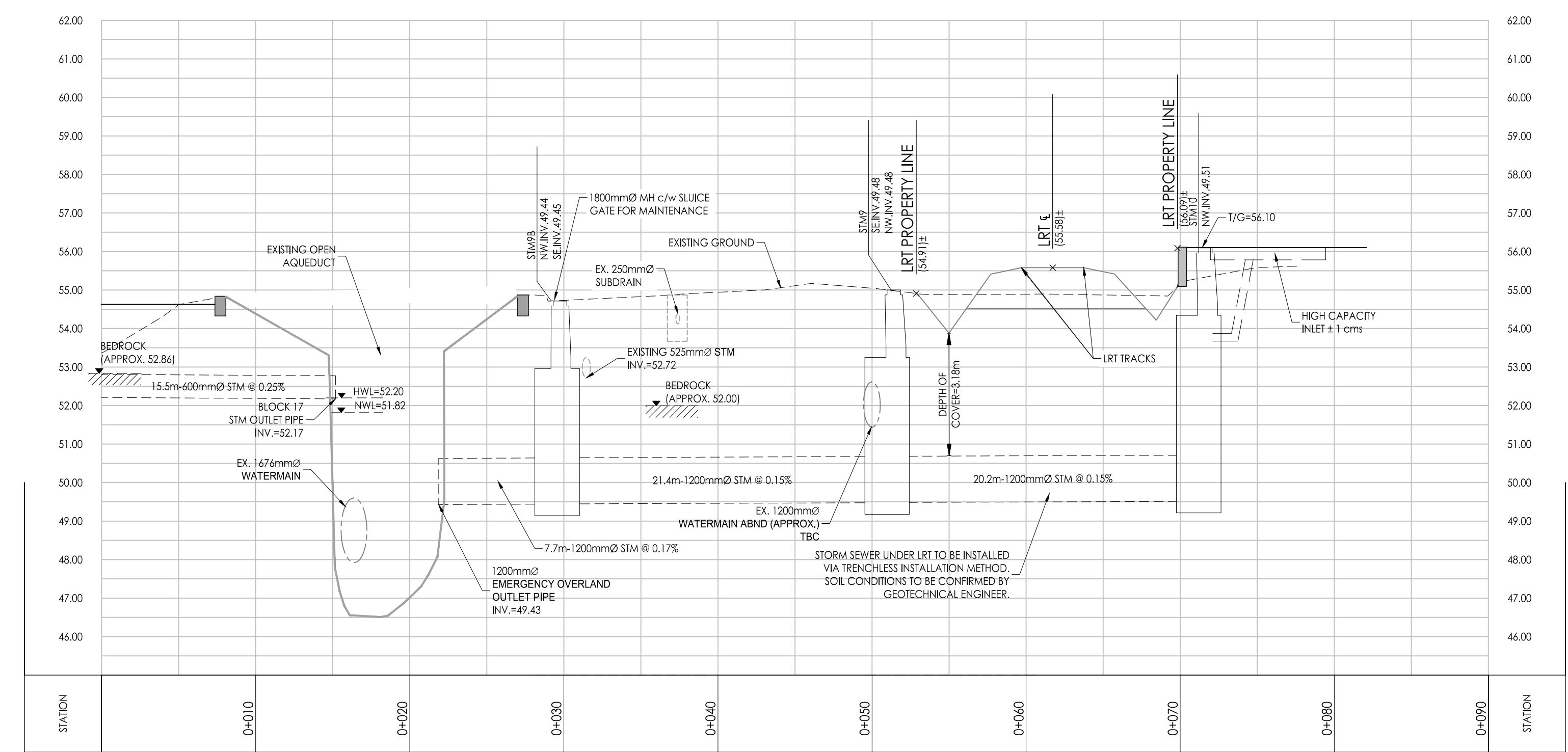
| | | |
|-------------|--------|----------|
| Project No. | Scale | |
| 16401780 | | |
| Drawing No. | Sheet | Revision |
| DS-1 | 7 of 8 | 1 |

Copyright Reserved
The Contractor shall verify and be responsible for all dimensions. DO NOT scale the drawing - any errors or omissions shall be reported to Stantec without delay.
The Copyrights to all designs and drawings are the property of Stantec. Reproduction or use for any purpose other than that authorized by Stantec is forbidden.

Legend
 PROPOSED STORM SEWER
 EXISTING STORM SEWER



- Notes
- APPROXIMATE DEPTH OF BEDROCK RETRIEVED FROM GEOTECHNICAL REPORT BY STANTEC CONSULTING, TITLED "GEOTECHNICAL DESKTOP REVIEW: LEBRETON FLATS PLAN OF SUBDIVISION, OTTAWA, ONTARIO, PREPARED FOR NATIONAL CAPITAL COMMISSION, DATED MAY 7, 2024"
 - LRT DESIGN LAYOUT RETRIEVED FROM: MMM GROUP, DRAWING # REM-20-1-0000-DRD-2714, DATED: 2019-07-22
 - TOPOGRAPHIC SURVEY RETRIEVED FROM: STANTEC GEOMATICS LTD. PROJECT # 160401780-112, DATED AUGUST 31, 2023
 - DRAFT PLAN RETRIEVED FROM: STANTEC GEOMATICS LTD. PROJECT # 160401780-112, DATED MARCH 12, 2024



PRELIMINARY
NOT TO BE USED FOR CONSTRUCTION

| Revision | By | Appd. | Date |
|------------------------------------|----|-------|----------|
| 1 | JP | KS | 24.07.19 |
| DRAFT PLAN APPROVAL 1ST SUBMISSION | | | |

| Permit-Seal | Down. | Chkd. | Dsgn. | Date |
|-------------|-------|-------|-------|----------|
| | JP | DT | JP | 24.06.10 |

Client/Project
NCC (NATIONAL CAPITAL COMMISSION)
 40 Elgin Street, Suite 202
 OTTAWA, ON, K1P 1C7
LEBRETON FLATS DRAFT PLAN OF SUBDIVISION

Title
STORM OUTLET PLAN AND PROFILE
PRELIMINARY

| Project No. | Scale |
|-------------|-------|
| 160401780 | |

| Drawing No. | Sheet | Revision |
|-------------|--------|----------|
| PP-STM | 8 of 8 | 1 |