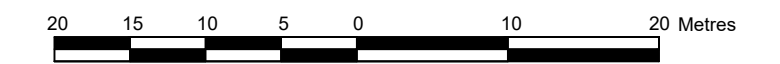


PLAN OF SURVEY OF

**LOTS 111A, 124, 125, 126, 127, 128, 135
AND PART OF LOTS 112, 141
REGISTERED PLAN 218
CITY OF OTTAWA**

Surveyed by Annis, O'Sullivan, Vollebakk Ltd.

Scale 1 : 500



Metric

DISTANCES SHOWN ON THIS PLAN ARE IN METRES AND CAN BE CONVERTED TO FEET BY DIVIDING BY 0.3048

Surveyor's Certificate

I CERTIFY THAT :

1. This survey and plan are correct and in accordance with the Surveys Act and the Surveyors Act and the regulations made under them.
2. The survey was completed on the 30th day of January, 2023.

Date _____ J. Cody Anderson
Ontario Land Surveyor

Notes & Legend

Denotes	
	Survey Monument Planted
	Survey Monument Found
	Standard Iron Bar
	Short Standard Iron Bar
	Iron Bar
	Cut Cross
	Witness
	Measured
	Annis, O'Sullivan, Vollebakk Ltd.
	Registered Plan 218
	Plan 5R-10968
	(857) Plan dated April 12, 2012
	(725) Plan dated September 30, 1992
	Plan 4R-10036
	(SG) Plan dated November 26, 2020
	Plan 5R-2722
	Plan 4R-9851
	Overhead Wires
	Utility Pole
	Cable Terminal Box
	Bollard
	Monitoring Well

Bearings are grid, derived from Can-Net 2016 Real Time Network GPS observations, referenced to Specified Control Points 01919680037 and 01919791051, MTM Zone 9 (76°30' West Longitude) NAD-83 (original).

For bearing comparisons, a rotation of 0°36'20" clockwise was applied to bearings on plan P4; a rotation of 0°01'50" counter-clockwise was applied to bearings on plan P5; a rotation of 0°01'00" counter-clockwise was applied to bearings on plan P8.

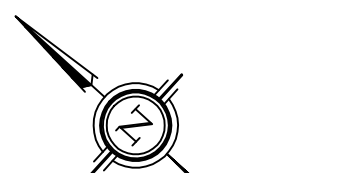
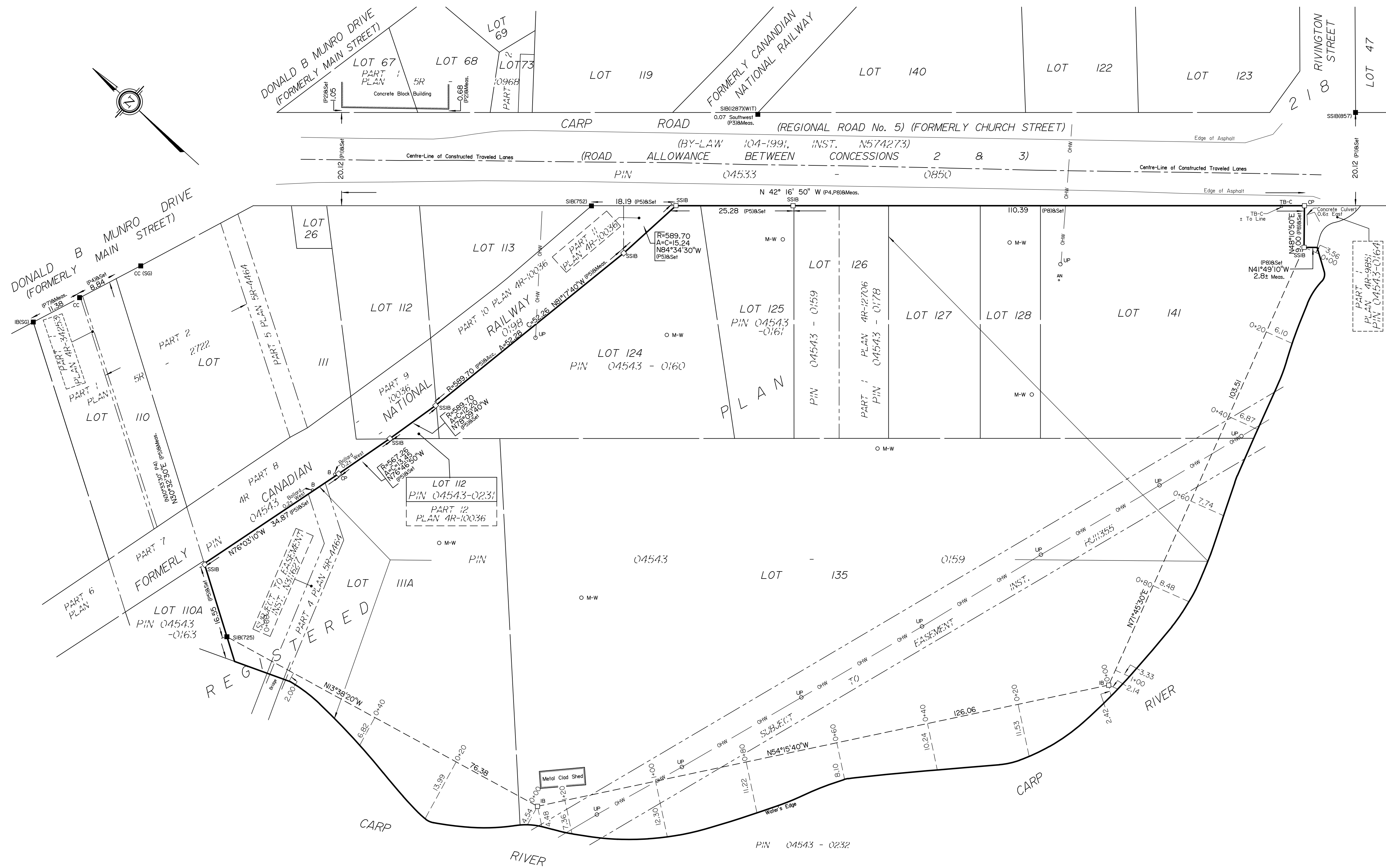
ASSOCIATION OF ONTARIO
LAND SURVEYORS
PLAN SUBMISSION FORM
V-44971

THIS PLAN IS NOT VALID UNLESS
IT IS AN EMBOSSED ORIGINAL
COPY ISSUED BY THE SURVEYOR
in accordance with
Regulation 1026, Section 29 (3).

© Annis, O'Sullivan, Vollebakk Ltd., 2023. THIS PLAN IS PROTECTED BY COPYRIGHT

ANNIS, O'SULLIVAN, VOLLEBEKK LTD.
14 Concourse Gate, Suite 500
Nepean, Ont. K2E 7S6
Phone: (613) 727-0850 / Fax: (613) 727-1079
Email: Nepean@aovltd.com

Ontario
Land Surveyors Job No. 23130-23KarpocPH.111A,126-128,135,141PL218Huntley, O. D2 | wj



Y:\2023\23130-23_Cra Karpoc_3711-2725_Carp Rd_Plan of Survey\Drawing\23130-23KarpocPH.111A,126-128,135,141PL218Huntley, O.D2.dwg