

UTILITY NOTES:

- THIS PLAN HAS BEEN PREPARED FOR CONCEPTUAL PURPOSES ONLY. REFER TO THE FOLLOWING PLANS, PREPARED BY THE UTILITY COMPANIES FOR DETAILS.
 - HYDRO ONE: MARK RAYCROFT (613-298-1348)
 - ENBRIDGE GAS: RUSSEL LONG (613-203-4524)
 - ROGERS CABLE: AL ROICHAUD (613-978-9788)
 - BELL CANADA: LEE SAUNDERS (613-601-8134)
 - CANADA POST: WILLY BEHRENS
 - STREETLIGHTS: ROBERT PUCCI (CITY OF OTTAWA) (613-296-7271)
- CONTRACTOR TO CONTACT RESPECTIVE UTILITY COMPANIES TO DETERMINE EXACT LOCATION OF EXISTING UTILITIES BEFORE COMMENCING WORK. CONTRACTOR TO ASSUME ALL LIABILITY FOR DAMAGE TO EX. UTILITIES.
- CONTRACTOR SHALL EXCAVATE, BACKFILL, AND RESTORE ALL SURFACES TO EXISTING CONDITIONS FOR HYDRO PRIMARY, BELL, AND ROGERS CABLES.
- TEMPORARILY COIL ALL SERVICE WIRES ON A 50mm X 100mm X 2.4m WOODEN POST 0.5m INSIDE PROPERTY LINE FOR EACH UNIT WITH ENOUGH CONDUCTOR TO ALLOW FOR COMPLETION OF TRENCHING AND BUILDING CONNECTION.
- ALL HYDRO TRANSFORMERS TO HAVE 3.0m (MIN.) CLEARANCE FROM DRIVEWAYS.
- ALL STREETLIGHTS TO HAVE 1.5m (MIN.) CLEARANCE FROM DRIVEWAYS.
- HYDRO METERS ARE TO BE LOCATED ON DRIVEWAY SIDE OF HOUSE.
- SECONDARY SERVICE TRENCHES ARE 4-PARTY JOINT USE TRENCH.

STREETLIGHTING REQUIREMENTS:

STREET	PROPOSED SPEED	CLASSIFICATION	PAVEMENT WIDTH	TARGET LIGHTING LEVELS
CHANDELLE PVT	50 km/h	LOCAL ROAD	8.5m	MARKER LIGHTING
STREET THREE	50 km/h	LOCAL ROAD	8.5m	MARKER LIGHTING
ALBERT BOYD PVT	50 km/h	LOCAL ROAD	8.0m	MARKER LIGHTING

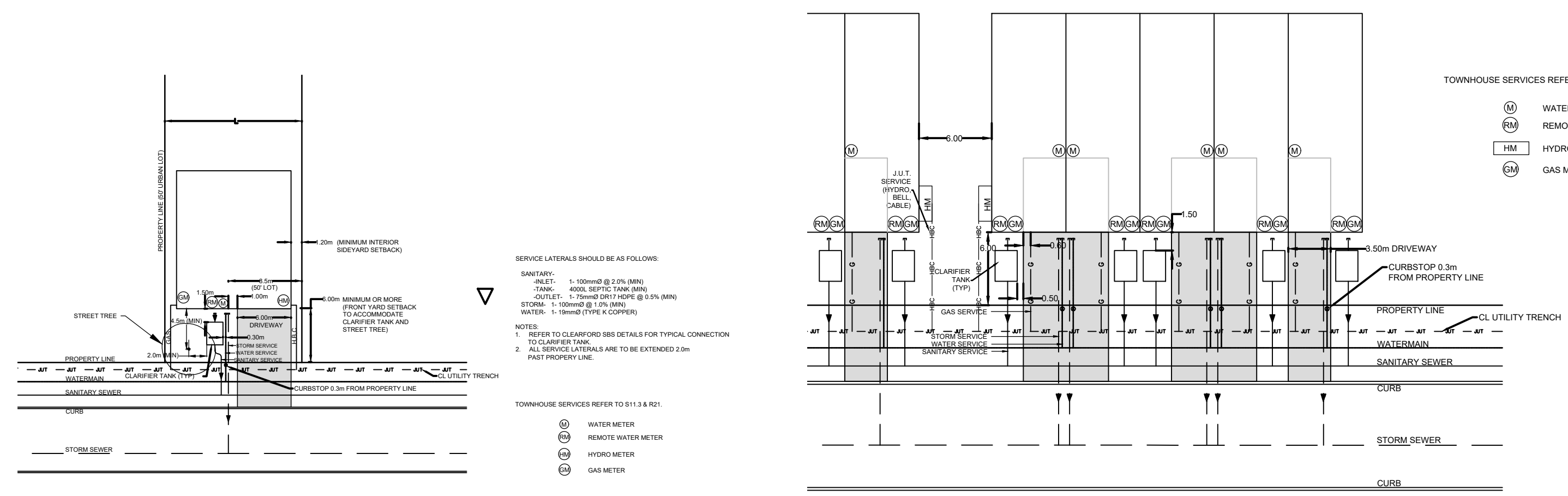
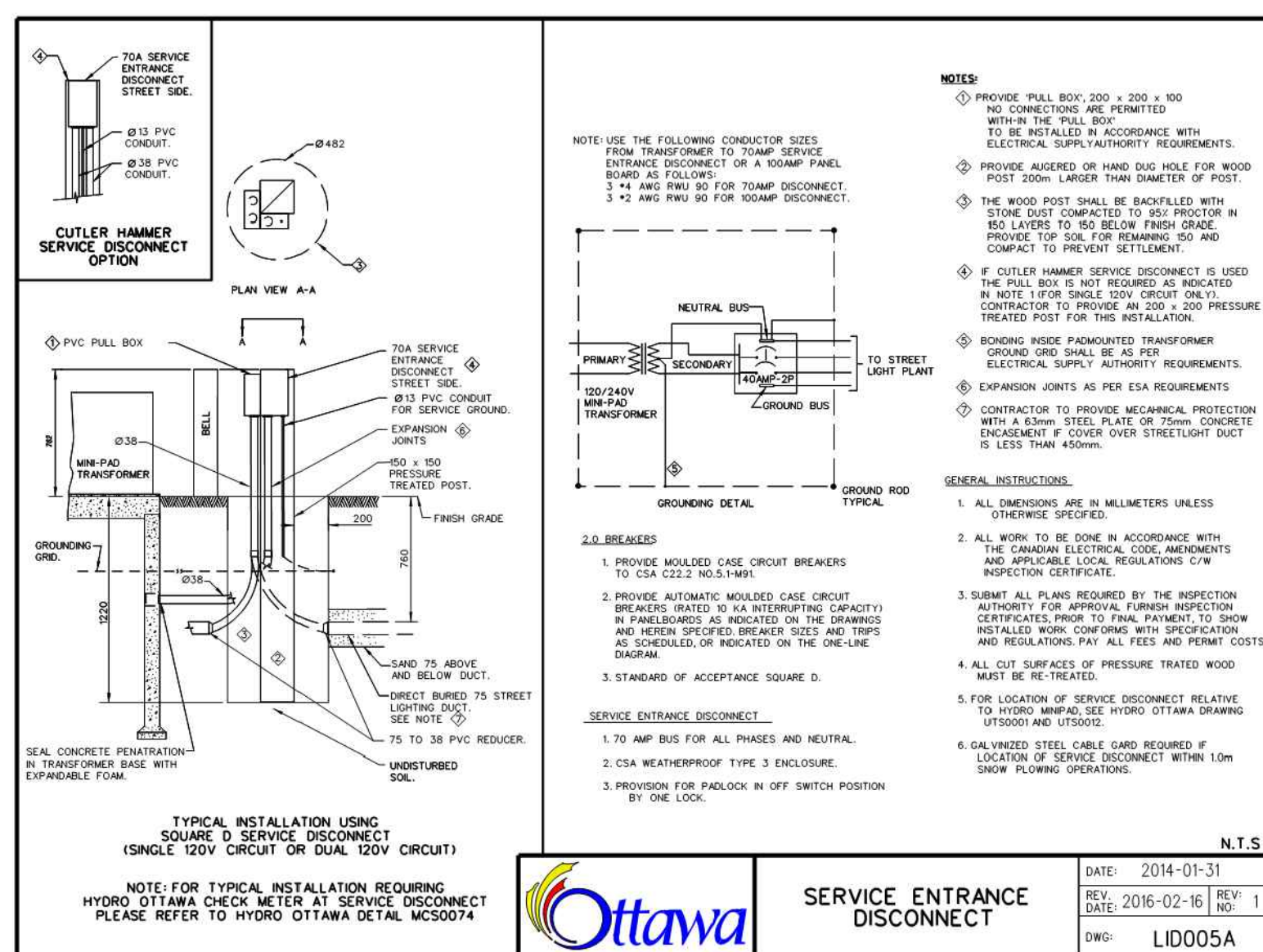
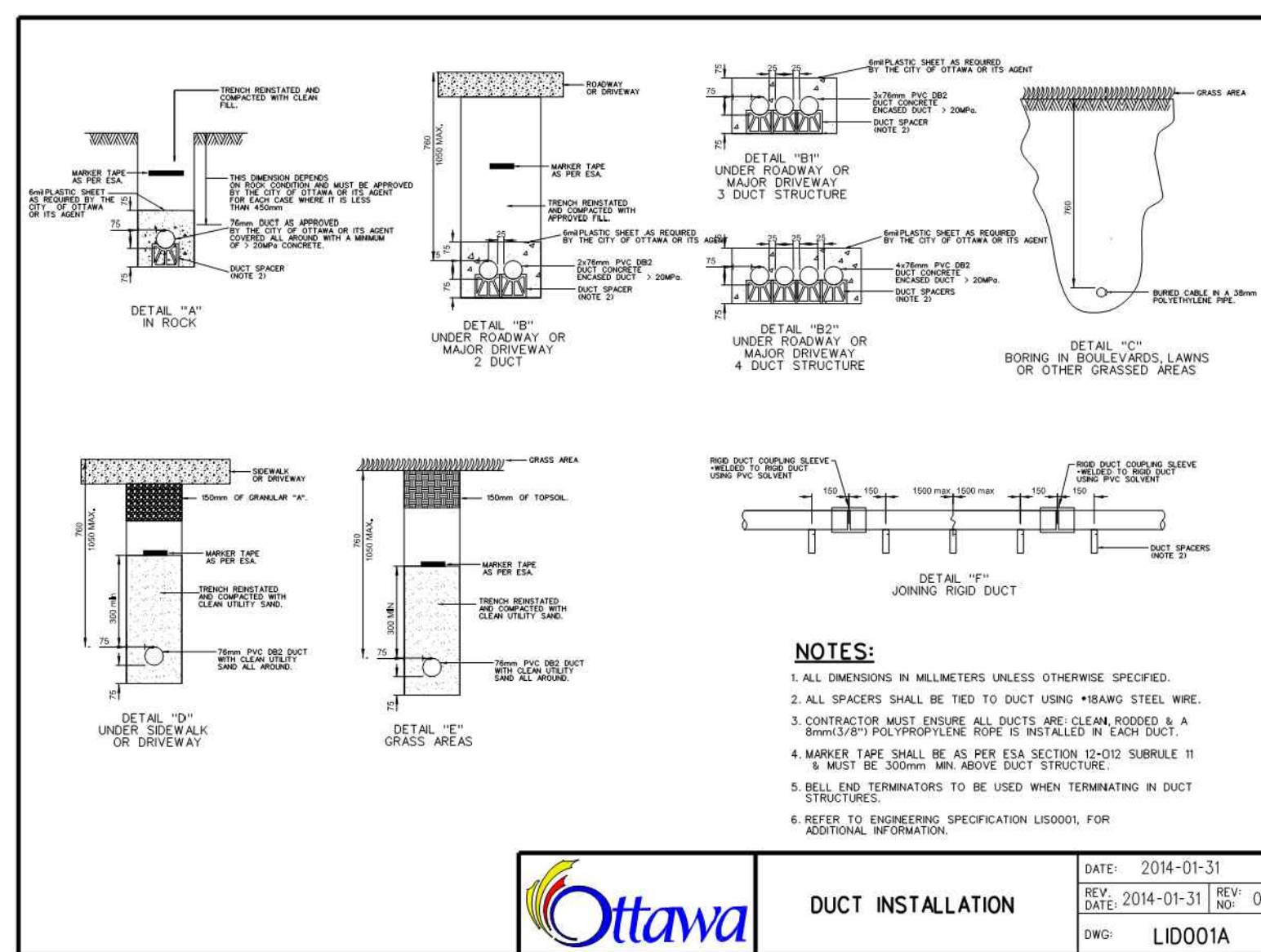
POLE:

STREETLIGHT	POLE SERIES	POLE LENGTH	POLE HEIGHT ABOVE GRADE	MANUFACTURING CATALOG #
SL 1B2-1 - SL 1B2-3	HAMPTON	9.1m	7.6m	HA-300-B-3-BE-20-X-OTT

LIGHT FIXTURE LEGEND:

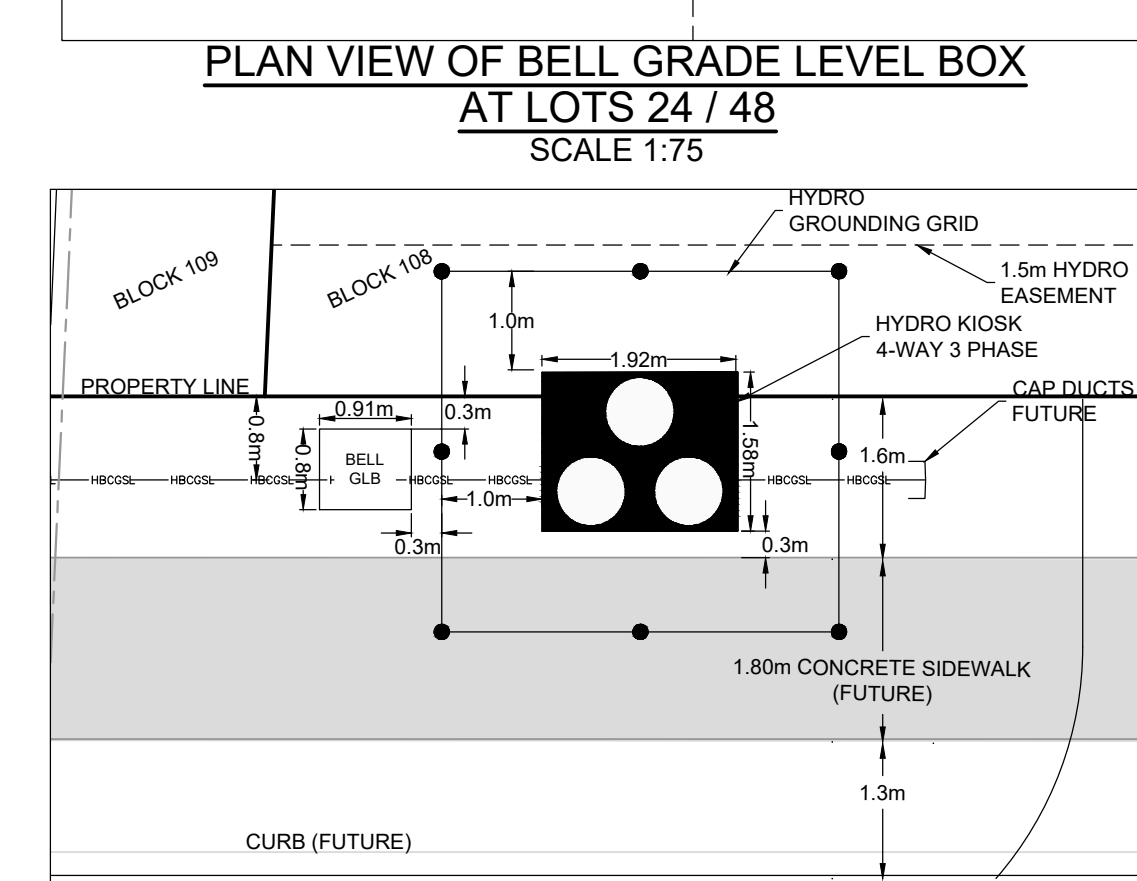
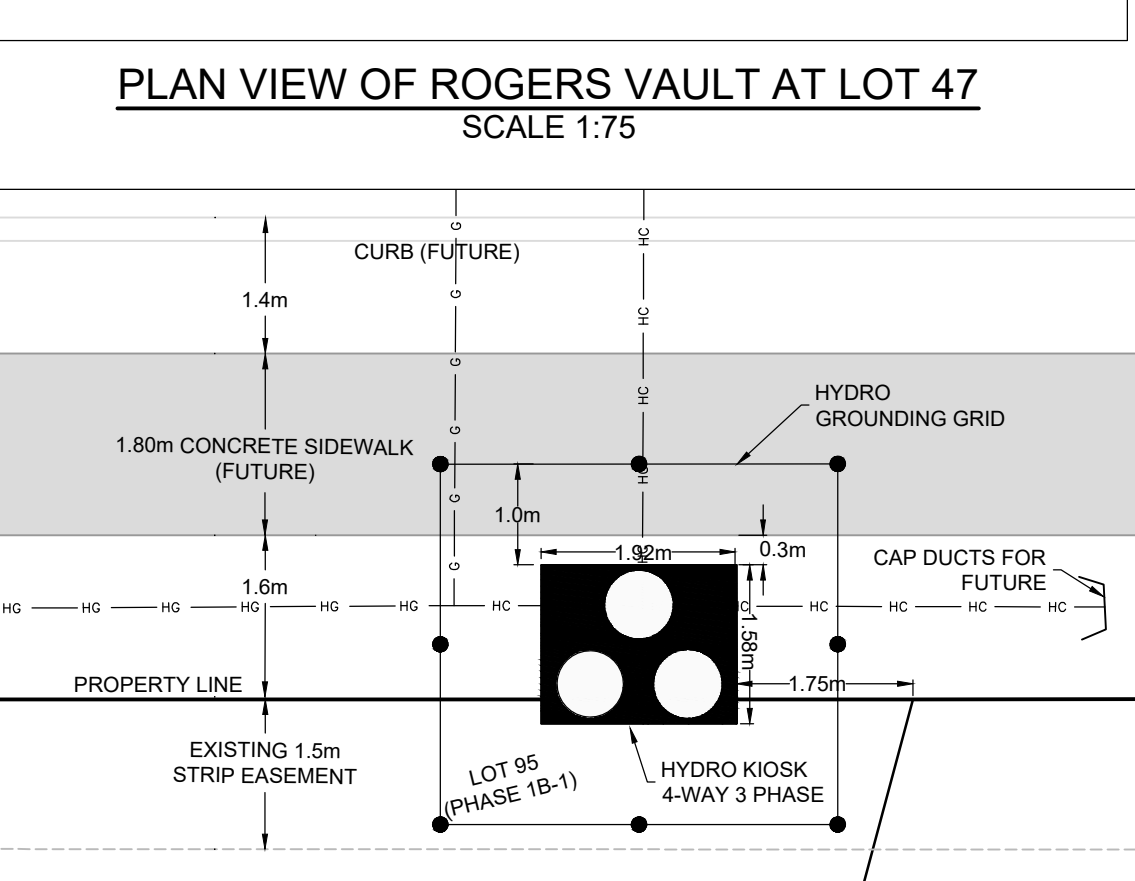
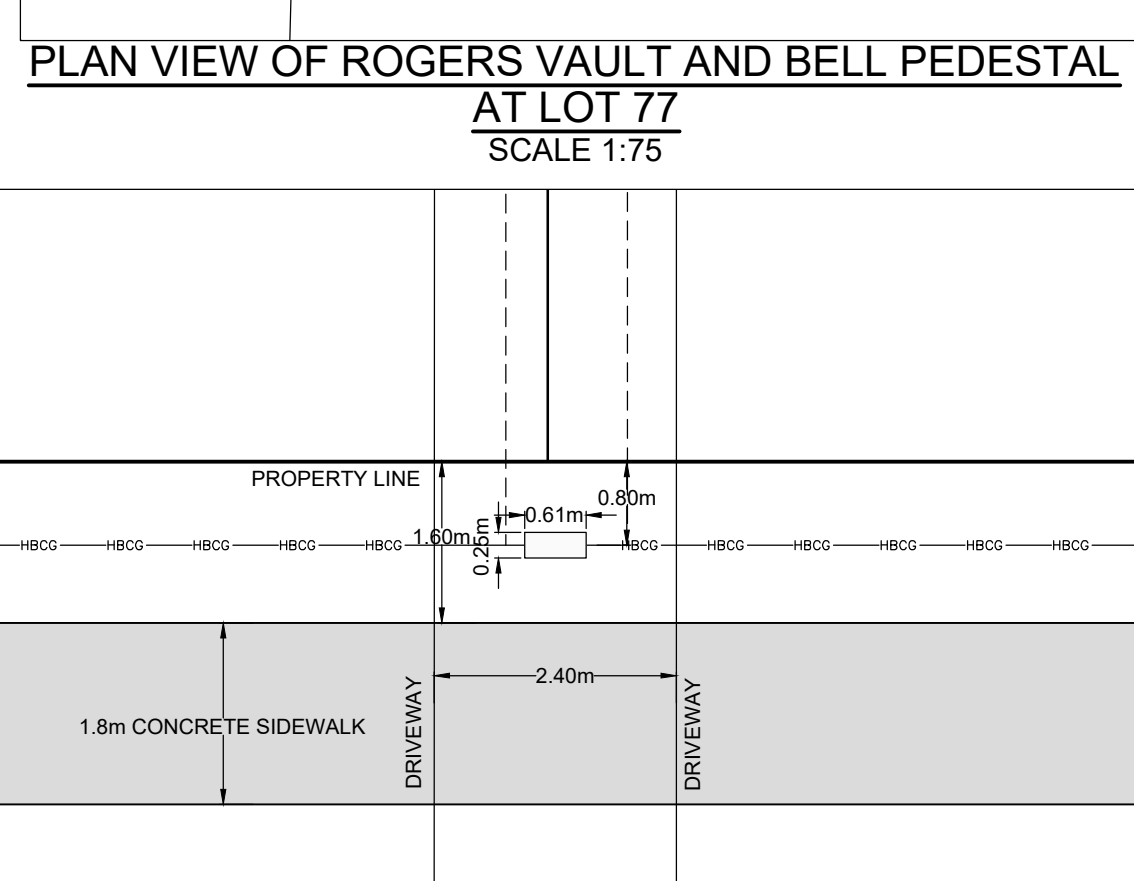
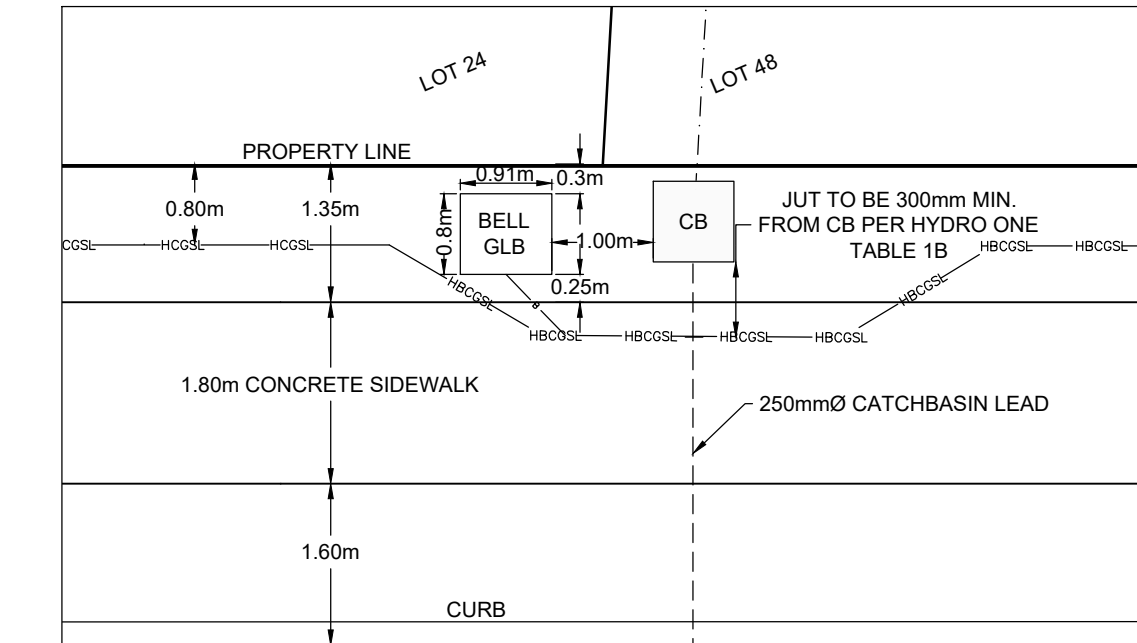
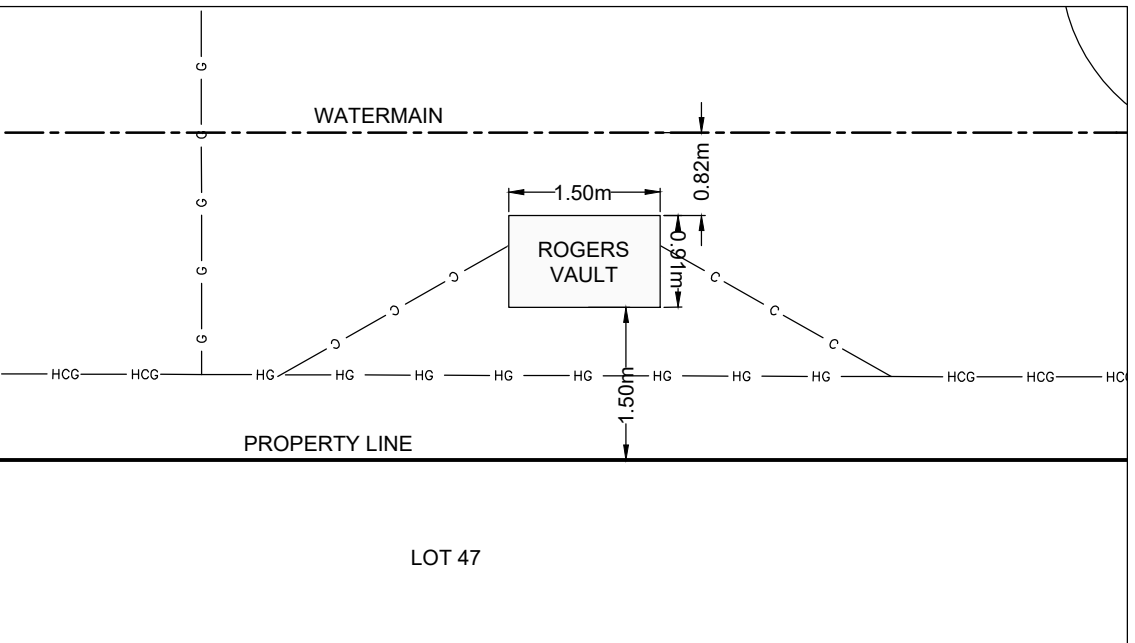
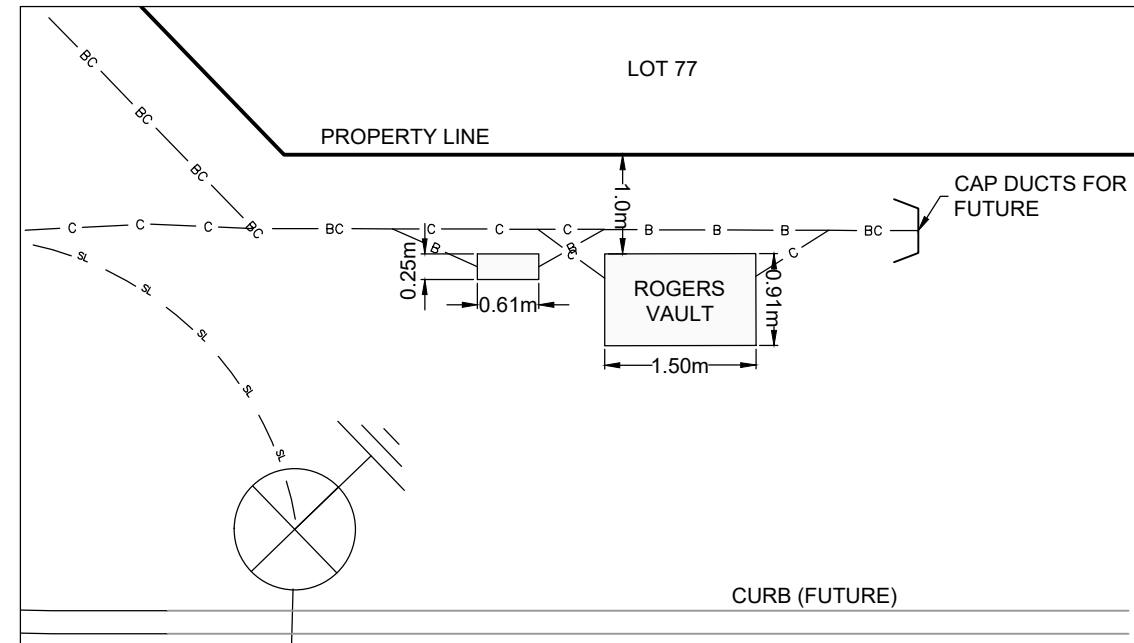
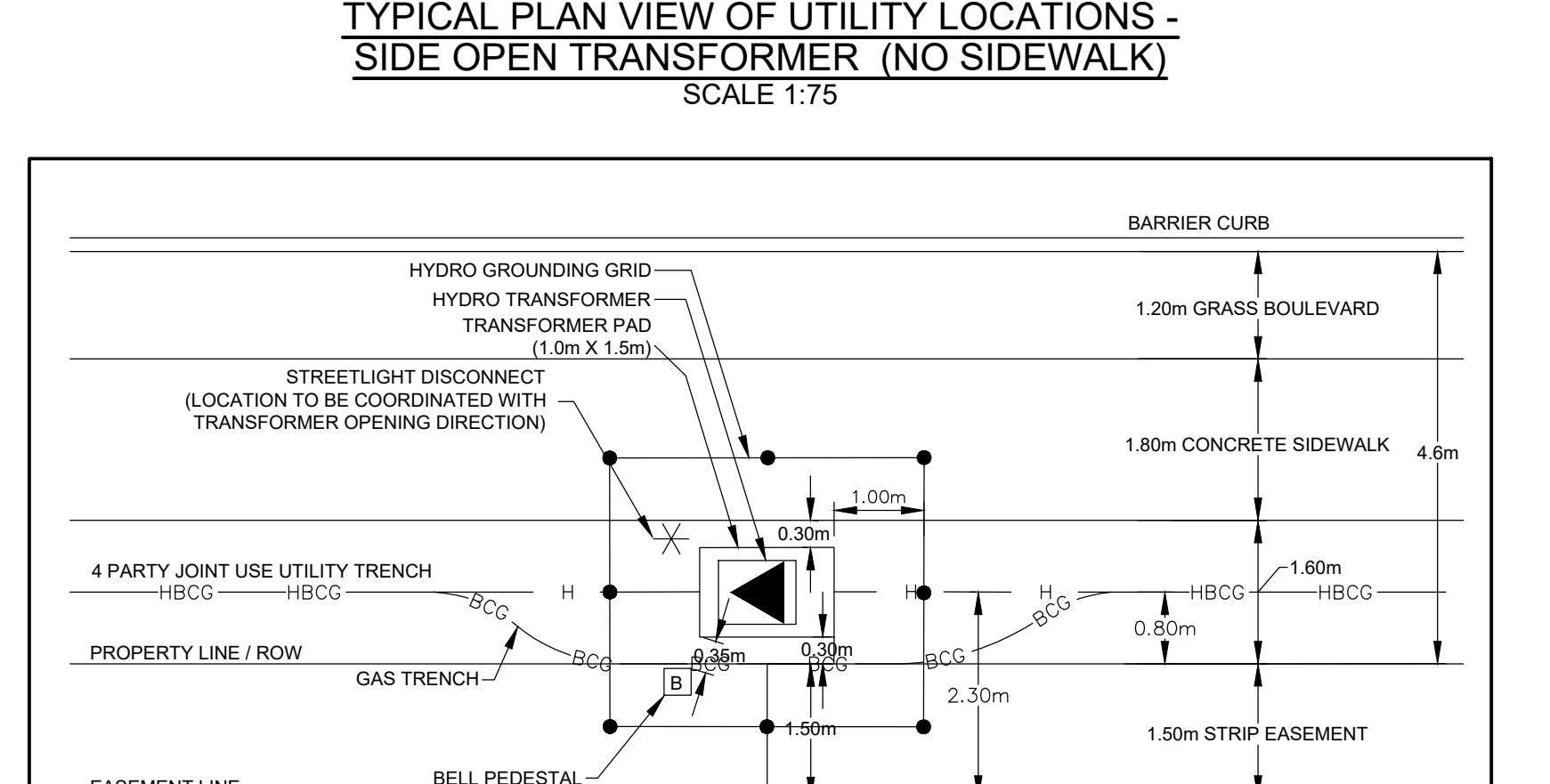
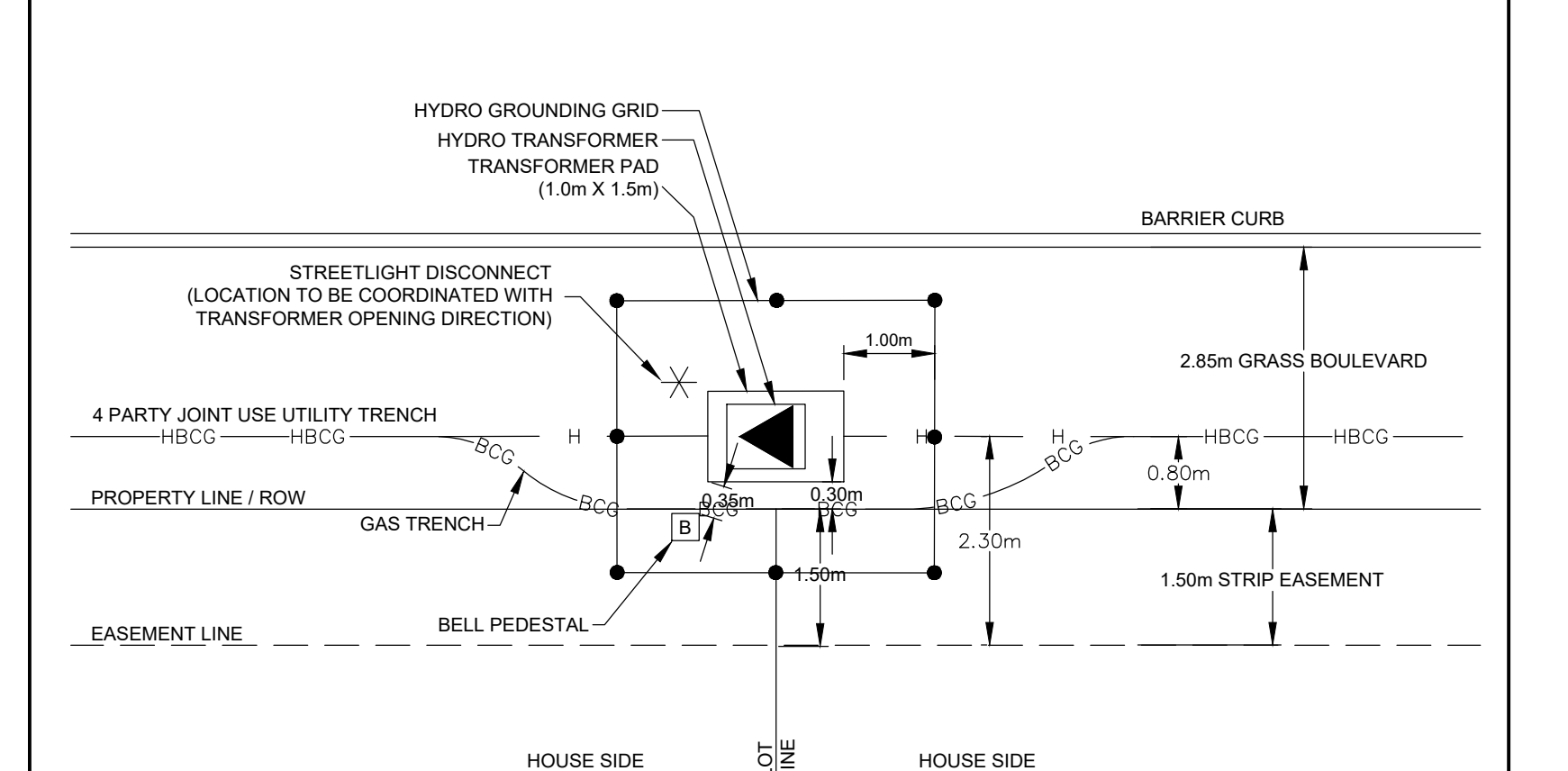
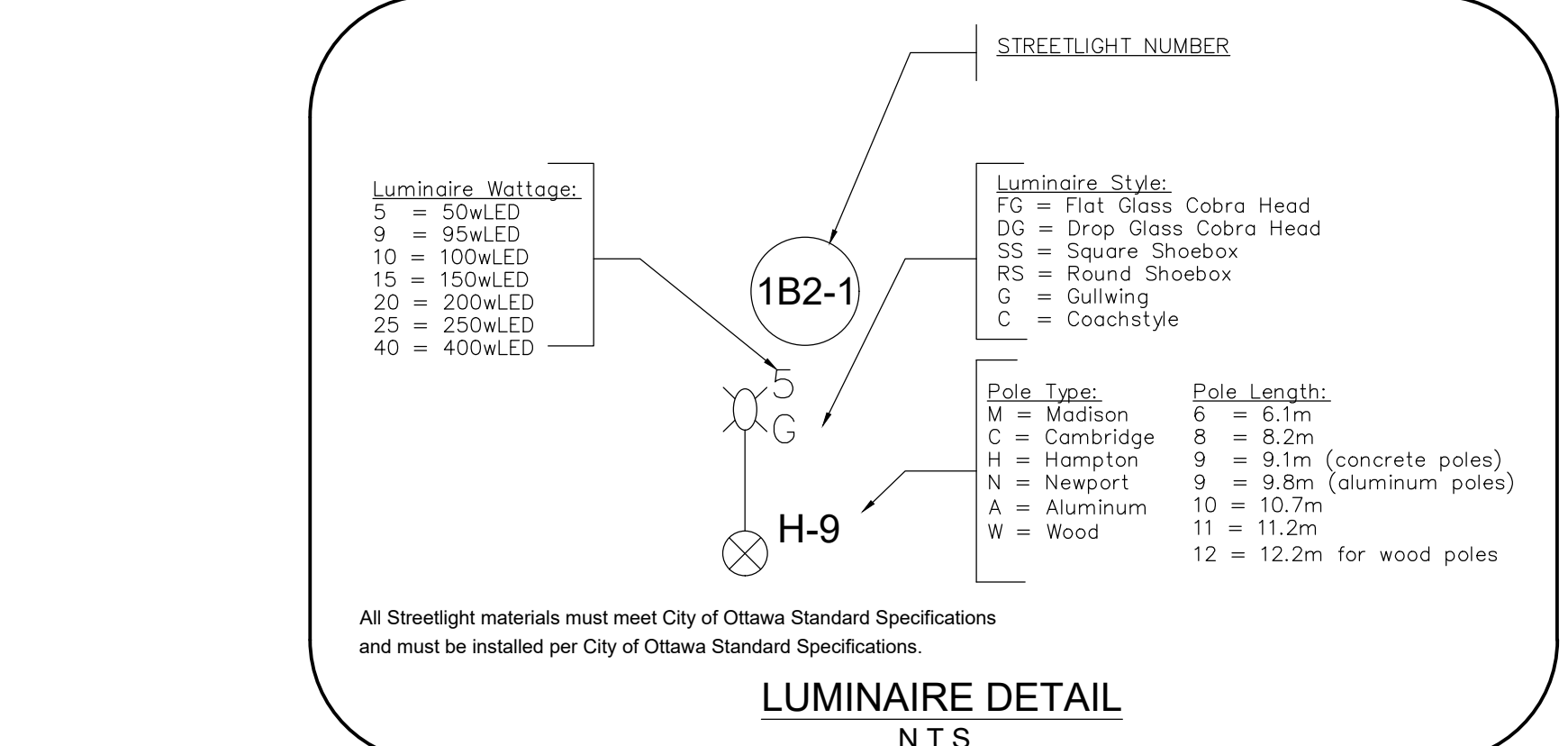
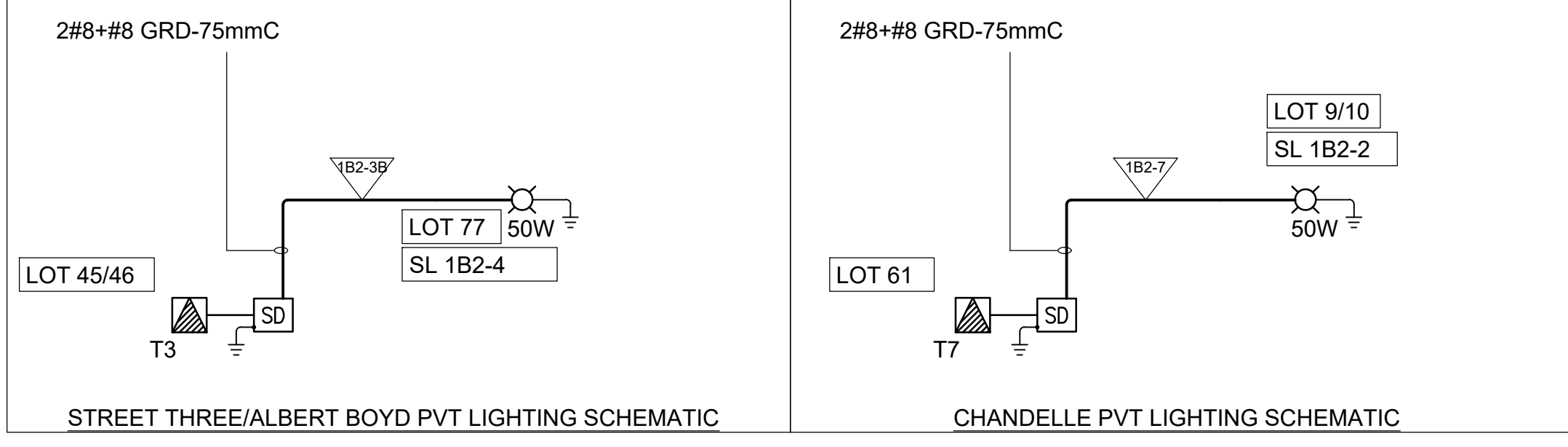
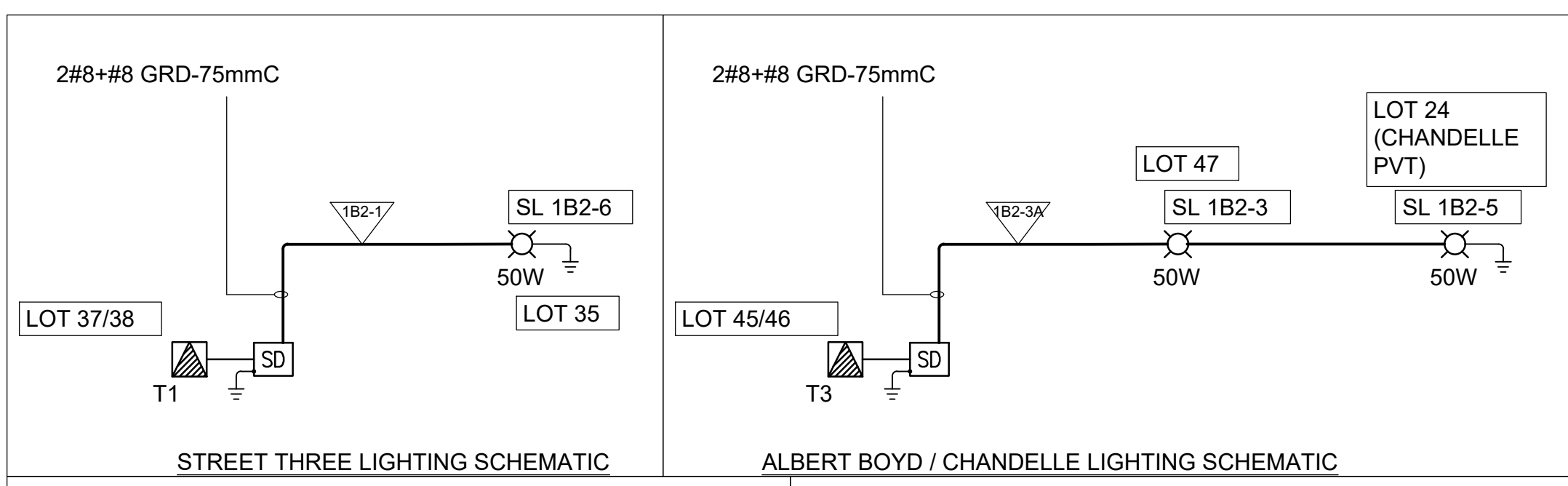
STREETLIGHT	TYPE	VOLTAGE	LAMP (WATTS)	MANUFACTURING CATALOG #
SL 1B-1 - SL 1B-5	GULLWING G18 (SINGLE)	120	50	G18-DIM-1-2-50LA-4835-WW-120-BLK-PCR7

*FIXTURE COMPLETE WITH TELENIA TELECELL T2A1N-B-3 STREETLIGHT CONTROLLER
 *GULLWING G18 LUMINAIRE INCLUDES BRACKET



TYPICAL LOT SERVICING DETAIL - URBAN LOT
N.T.S.

TYPICAL LOT SERVICING DETAIL - TOWNHOUSE
N.T.S.



NOTE: THE POSITION OF ALL POLE LINES, CONDUITS, WATERMANS, SEWERS AND OTHER UNDERGROUND AND OVERGROUND UTILITIES AND STRUCTURES IS NOT NECESSARILY SHOWN ON THE CONTRACT DRAWINGS, AND WHERE SHOWN, THE ACCURACY OF THE POSITION OF SUCH UTILITIES AND STRUCTURES IS NOT GUARANTEED. BEFORE STARTING WORK, DETERMINE THE EXACT LOCATION OF ALL SUCH UTILITIES AND STRUCTURES AND ASSUME ALL LIABILITY FOR DAMAGE TO THEM.

NO.	REVISION	DATE	BY
3	REVISED PER EASEMENT COORDINATION	JUN 24/24	ARM
2	REVISED PER UTILITY CIRCULATION #2	MAY 31/24	ARM
1	ISSUED WITH UTILITY CIRCULATION #2	APR 4/24	ARM

<p>NOVATECH Engineers, Planners & Landscape Architects Suite 200, 240 Michael Copland Drive Ottawa, Ontario, Canada K2M 1P6 Telephone: (613) 254-9643 Facsimile: (613) 254-5867 Website: www.novatech-eng.com</p>	<p>LOCATION: CITY OF OTTAWA WEST CAPITAL AIRPARK DRAWING NAME: UTILITY AND STREETLIGHT DETAILS - PHASE 1B-2 PROJECT NO: 102085-08 REV: # 3 DRAWING NO: 102085-SL1B2</p>
--	---