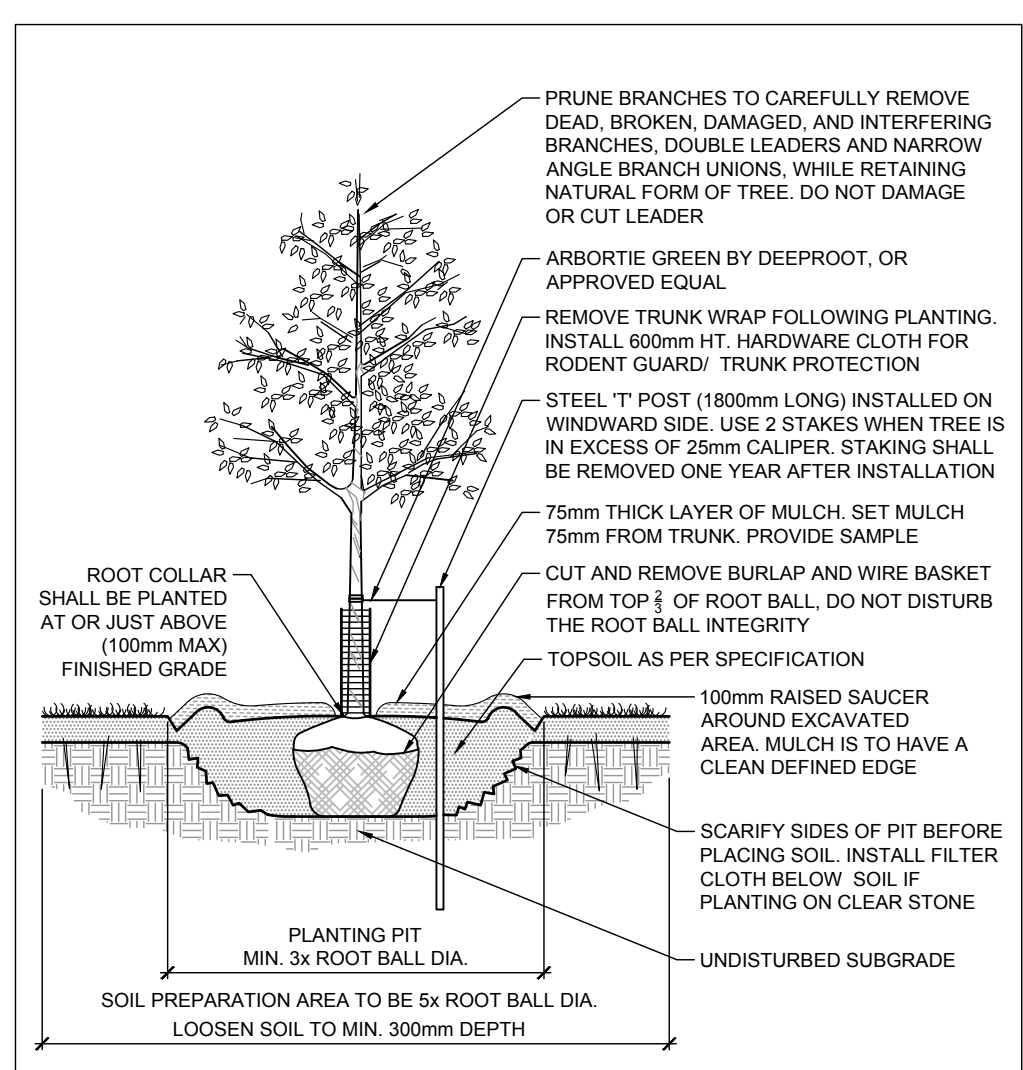


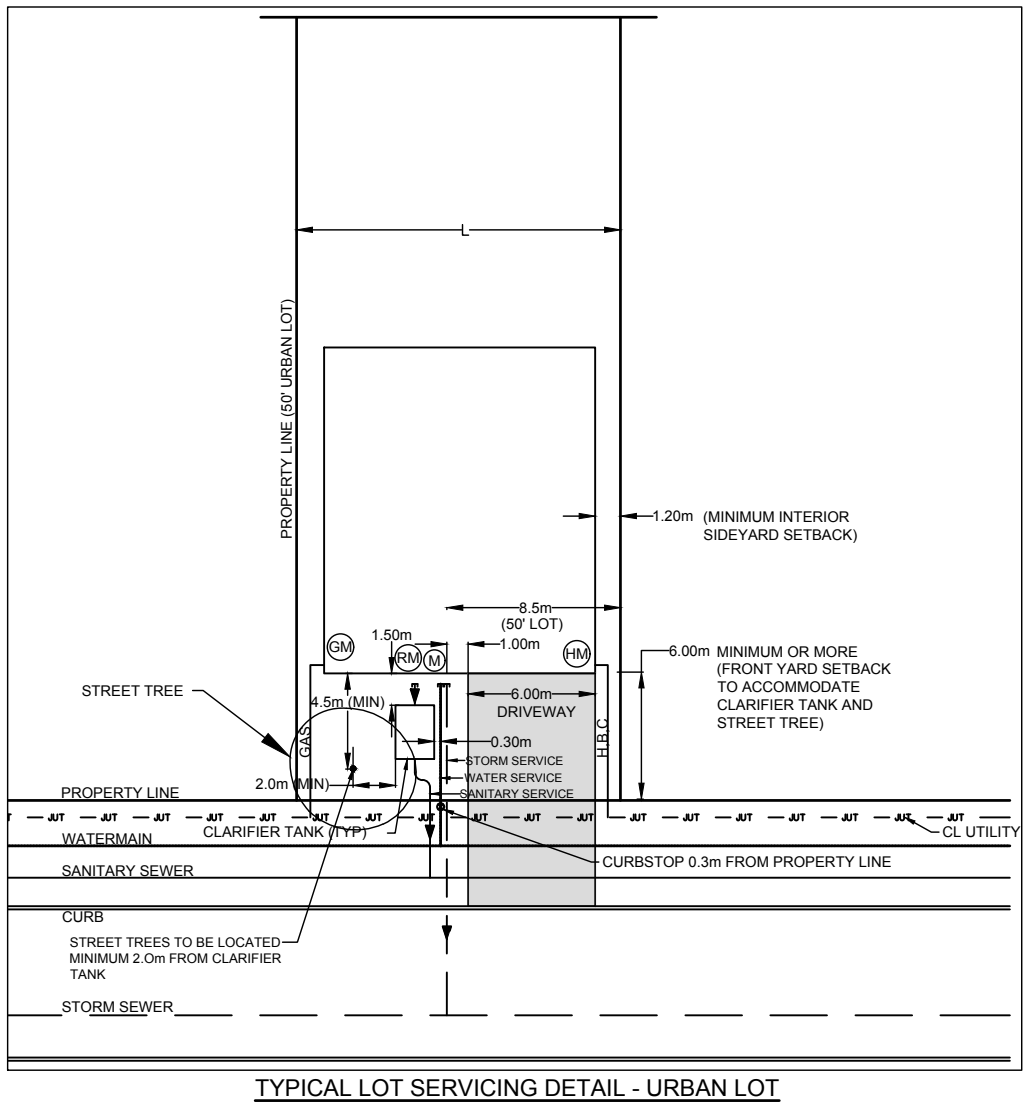
- LANDSCAPE LEGEND:**
- PROPOSED DECIDUOUS TREE
 - SPECIES (SEE PLANT LIST)
 - QUANTITY
 - GEOTECHNICAL SOIL AREA DELINEATION

- GENERAL**
1. Read and interpret this drawing/ drawing set in conjunction with all the contract details and specifications, including related civil, utility, structural, architectural, mechanical, electrical, environmental, geotechnical, and survey information.
 2. The Contractor is to determine the exact location, size, material, and elevation of all existing utilities prior to commencing construction. Protect and assume responsibility for all existing utilities regardless of being shown on the drawings.
 3. It is essential to use the plans and details in conjunction with the specifications and notes.
 4. Do not scale drawings. Work to dimensions only.
 5. Protect all existing and retained vegetation for the duration of construction according to the contract details and specifications.
 6. Reinstale all areas and items damaged or disturbed, beyond the Limit of Work, because of construction activities, including but not limited to construction staging areas, haul roads, stockpile areas, etc. to the satisfaction of the Consultant. Unless otherwise noted, Contractor is to reinstale all areas to pre-construction condition or better to the satisfaction of the Contract Administrator.

- PLANTING**
1. Plant material to be No. 1 Grade and is to comply with Canadian Standards for Nursery Stock (latest edition) published by the Canadian Nursery Landscape Association.
 2. Use structurally sound plant material with strong fibrous root system free of disease, defects, and injuries. Use trees with straight trunks, well and characteristically branched for species. Obtain approval from consultant of plant material at source prior to digging. All trees and shrubs to be container grown, potted, W/B or B/B, as indicated on Plant List. Bare root plants are only acceptable for certain species and as approved by the Landscape Architect.
 3. Plant material substitutions are not to be permitted without the written approval from the Consultant, with 48 hours notice, prior to shipping plant material.
 4. Plant locations are schematic/ approximate only. Contractor is to stake out locations on site for approval by the Landscape Architect prior to installation.
 5. The illustrated number of plants shown in the Planting Plan supersedes the estimated number in the Plant List. Contractor to report any discrepancies to the Landscape Architect prior to installation. Contractor will assume full responsibility if the Landscape Architect is not notified.
 6. Ensure trees are thoroughly watered following planting. Monitor material and ensure adequate moisture until acceptance.
 7. In heavy clay or poorly drained soils, set root ball with root collar 75-100mm higher than finished grade.
 8. Approved topsoil depths are as follows:
 - a. Plant Beds - 450mm continuous depth. Applies to shrubs, perennials, vines, and groundcovers.
 - b. Sod/ Seed Areas - 100mm depth.
 - c. Reforestation - 300mm depth.
 9. Sod to be No. 1 Kentucky Bluegrass Sod grown from minimum mixture of 3 Kentucky Bluegrass cultivars. Quality and source are to comply with Canadian Standards for Nursery Stock, Section 17, (latest edition) published by the Canadian Nursery Landscape Nursery Landscape Association.
 10. Apply the following mineral fertilizer unless soil tests show other requirements:
 - a. Plant Beds - (8-32-16), i.e. 8% Nitrogen, 32% Phosphorus, 16% Potash per manufacturer specifications.
 - b. Sod Areas - (8-32-16), i.e. 8% Nitrogen, 32% Phosphorus, 16% Potash at a rate of 350kg/ha.
 12. Where applicable, for any plant areas with a mix of species/ cultivars notes, Contractor is to cluster like plants in groups of 3-5 and evenly distribute these in the noted area.



STANDARD DECIDUOUS TREE PLANTING D1



TYPICAL LOT SERVICING DETAIL - URBAN LOT N.T.S.

PLANT LIST

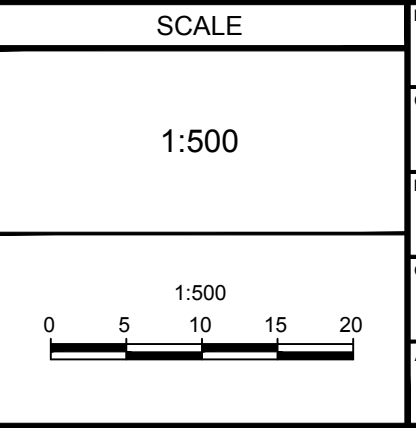
KEY	QTY	BOTANICAL NAME	COMMON NAME	SIZE	MATURE SIZE	COND	SPACING
Deciduous Trees							
AR	4	<i>Acer rubrum</i>	Red Maple	50mm Cal	20m Ht. x 12m Spd	WB	As Shown
ARC	3	<i>Acer rubrum 'Scarlet'</i>	Scarlet Sentinel Red Maple	50mm Cal	14m Ht. x 8m Spd	WB	As Shown
AFGM	3	<i>Acer x freemanii 'Calzani'</i>	Celebration Maple	50mm Cal	14m Ht. x 8m Spd	WB	As Shown
CEL	3	<i>Celtis occidentalis</i>	Hackberry	50mm Cal	18m Ht. x 17m Spd	WB	As Shown
CCO	8	<i>Corylus colurna</i>	Turkish Hazelnut	50mm Cal	15m Ht. x 8m Spd	WB	As Shown
GBP	6	<i>Ginkgo biloba 'Princeton Sentry'</i>	Princeton Sentry Ginkgo	50mm Cal	15m Ht. x 8m Spd	WB	As Shown
OXA	6	<i>Quercus x alba x robur 'Streetpire' (JFS-KW12)</i>	Streetpire Oak	50mm Cal	14m Ht. x 5m Spd	WB	As Shown
UNH	6	<i>Ulmus japonica x pumila 'New Horizon'</i>	New Horizon Elm	50mm Cal	13m Ht. x 8m Spd	WB	As Shown

NOTE: THE POSITION OF ALL POLE LINES, CONDUITS, WATERMANS, SEWERS AND OTHER UNDERGROUND AND OVERGROUND UTILITIES AND STRUCTURES IS NOT NECESSARILY SHOWN ON THE CONTRACT DRAWINGS, AND WHERE SHOWN, THE ACCURACY OF THE POSITION OF SUCH UTILITIES AND STRUCTURES IS NOT GUARANTEED. BEFORE STARTING WORK, DETERMINE THE EXACT LOCATION OF ALL SUCH UTILITIES AND STRUCTURES AND ASSUME ALL LIABILITY FOR DAMAGE TO THEM.



NOT FOR CONSTRUCTION

NO.	REVISION	DATE	BY
1.	ISSUED FOR REVIEW	FEB 23/24	RGJ



FOR REVIEW ONLY

DESIGN	MEL
CHECKED	RGJ
DRAWN	MEL
CHECKED	RGJ
APPROVED	RGJ



LOCATION: CITY OF OTTAWA, WEST CAPITAL AIRPARK

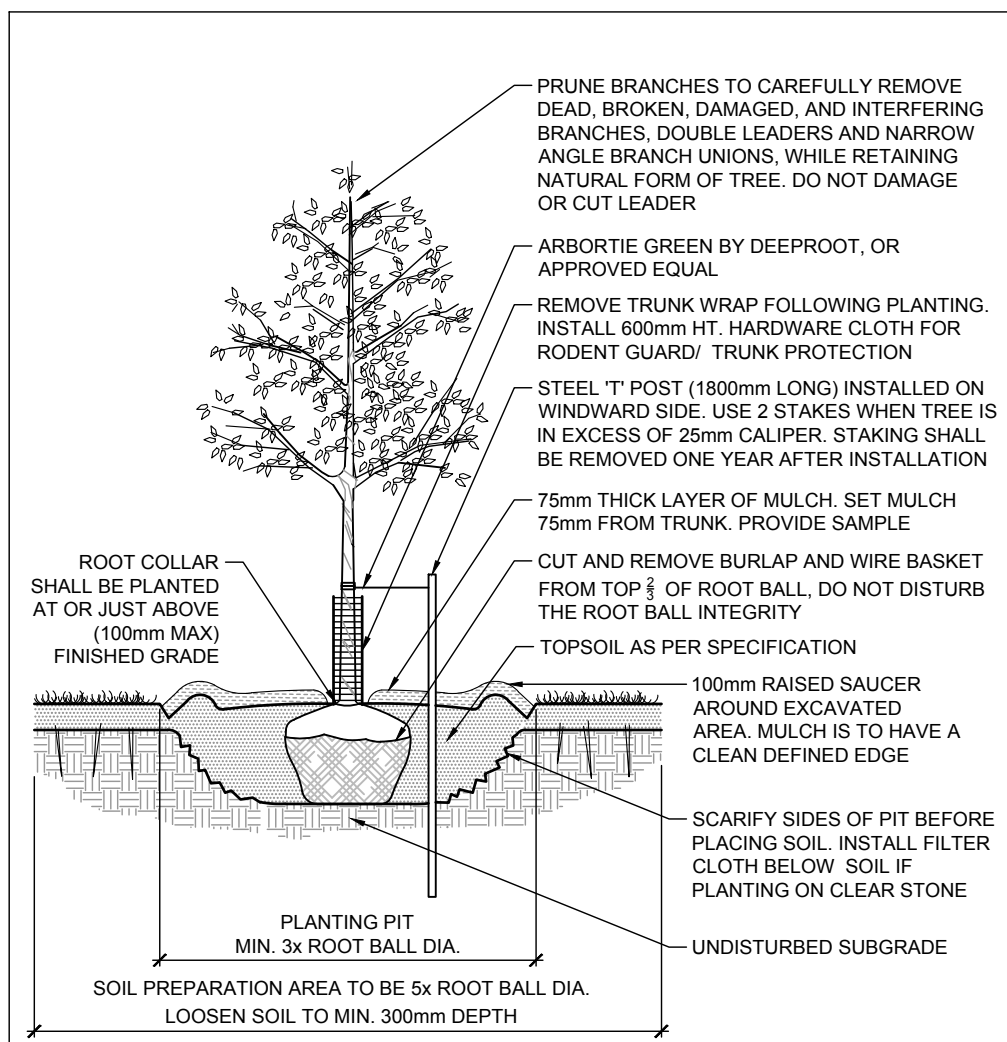
DRAWING NAME: LANDSCAPE PLAN - PHASE 1B-2

PROJECT NO: 102085-22

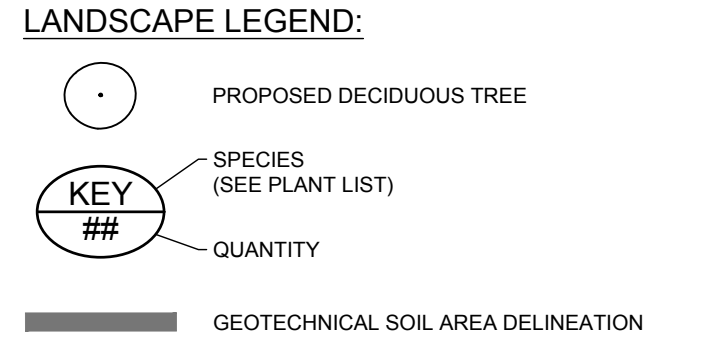
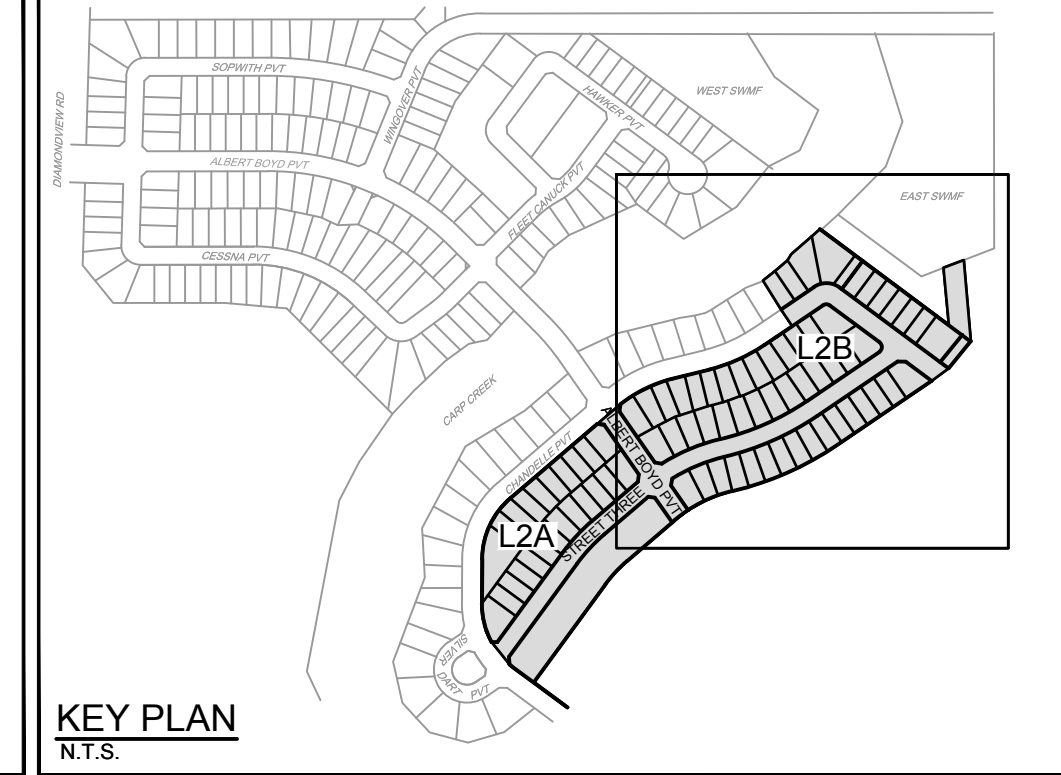
REV: REV #1

DRAWING NO: 102085-L2A

C:\0202-102085-CAD\102085-L2A\102085-L2A.dwg, L2A, Feb 26, 2024, 11:58am, mmm



STANDARD DECIDUOUS TREE PLANTING D1



- GENERAL**
1. Read and interpret this drawing/ drawing set in conjunction with all the contract details and specifications, including related civil, utility, structural, architectural, mechanical, electrical, environmental, geotechnical, and survey information.
 2. The Contractor is to determine the exact location, size, material, and elevation of all existing utilities prior to commencing construction. Protect and assume responsibility for all existing utilities regardless of being shown on the drawings.
 3. It is essential to use the plans and details in conjunction with the specifications and notes.
 4. Do not scale drawings. Work to dimensions only.
 5. Protect all existing retained vegetation for the duration of construction according to the contract details and specifications.
 6. Reinstatement all areas damaged or disturbed, beyond the Limit of Work, because of construction activities, including but not limited to construction staging areas, haul roads, stockpile areas, etc. to the satisfaction of the Consultant. Unless otherwise noted, Contractor is to reinstatement all areas to pre-construction condition or better to the satisfaction of the Contract Administrator.

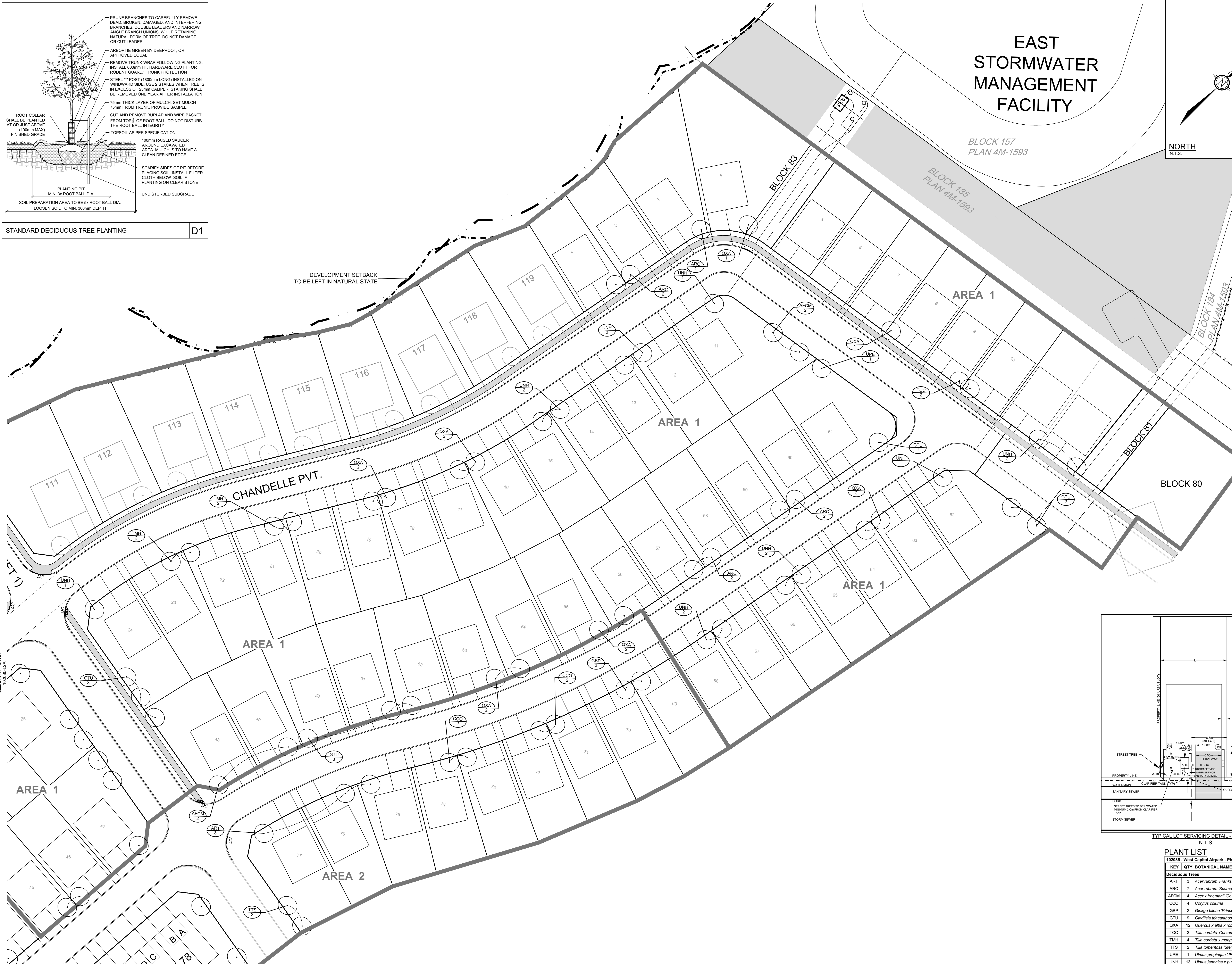
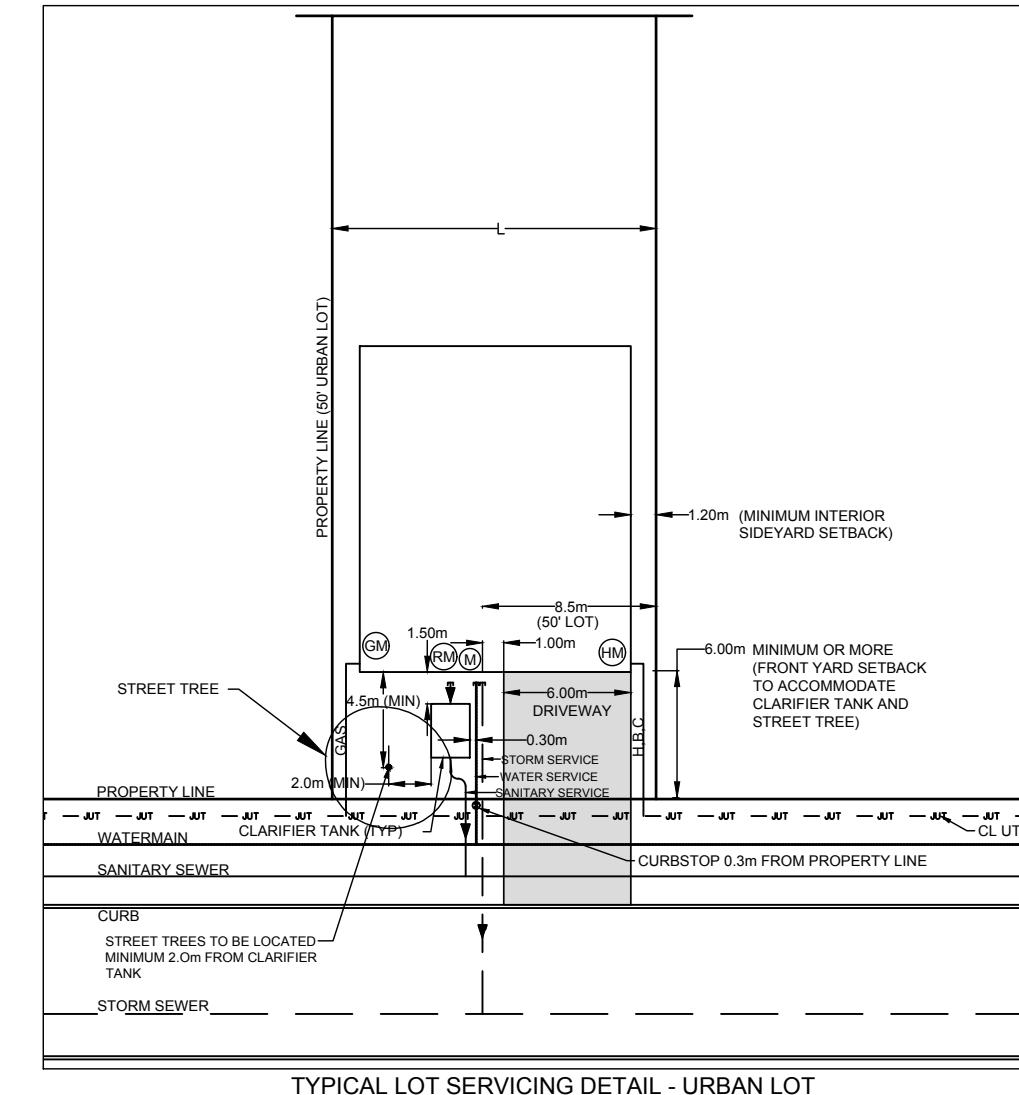
- PLANTING**
1. Plant material to be No. 1 Grade and is to comply with Canadian Standards for Nursery Stock (latest edition) published by the Canadian Nursery Landscape Association.
 2. Use structurally sound plant material with strong fibrous root system free of disease, defects, and injuries. Use trees with straight trunks, well and characteristically branched for species. Obtain approval from consultant of plant material at source prior to digging. All trees and shrubs to be container grown, potted, with or without BFB, as indicated on Plant List. Bare root plants are only acceptable for certain species and as approved by the Landscape Architect.
 3. Plant material substitutions are not permitted without the written approval from the Consultant, with 48 hours notice, prior to shipping plant material.
 4. Plant locations are schematic / approximate only. Contractor is to stake out locations on site for approval by the Landscape Architect prior to installation.
 5. The illustrated number of plants shown in the Planting Plan supersedes the estimated number in the Plant List. Contractor to report any discrepancies to the Landscape Architect prior to installation. Contractor will assume full responsibility if the Landscape Architect is not notified.
 6. Ensure trees are thoroughly watered following planting. Monitor material and ensure adequate moisture until acceptance.
 7. In heavy clay or poorly drained soils, set root ball with root collar 75-100mm higher than finished grade.
 8. Approved topsoil depths are as follows:
 - a. Plant Beds - 450mm continuous depth. Applies to shrubs, perennials, vines, and groundcovers.
 - b. Sod/ Seed Areas - 100mm depth.
 - c. Reforestation - 300mm depth.
 9. Sod to be No. 1 Kentucky Bluegrass Sod grown from minimum mixture of 3 Kentucky Bluegrass cultivars. Quality and source are to comply with Canadian Standards for Nursery Stock, Section 17, (latest edition) published by the Canadian Nursery Landscape Nursery Landscape Association.
 10. Apply the following mineral fertilizer unless soil tests show other requirements:
 - a. Plant Beds - (8-32-16), i.e. 8% Nitrogen, 32% Phosphorus, 16% Potash per manufacturer specifications.
 - b. Sod Areas - (8-32-16), i.e. 8% Nitrogen, 32% Phosphorus, 16% Potash at a rate of 350kg/ha.
 12. Where applicable, for any plant areas with a mix of species/ cultivars notes, Contractor is to cluster like plants in groups of 3-5 and evenly distribute these in the noted area.

GEOTECHNICAL INFORMATION

For the trees proposed on this plan, AREA 1 - Tree Planting Setback of 4.5 m from building foundation as per Section 6.9 of the Geotechnical Report. AREA 2 - No Tree Planting Restrictions - per Section 6.9 of the Geotechnical Report.

Trees are to be as specified. This set of landscape plans have been developed as per the Geotechnical Investigation Carp Airport Servicing and Residential Development - Phase 1, (Carp) Ottawa, Ontario January 16, 2023. Prepared by Paterson Group, and the Tree Planting Setback Plan, Dwg. No. PG2450-4, November 2022.

NOTE: Street trees for the front yards of lots 5, 6 and 7 have not been provided and there are limitations for the side/rear yards of lots 48 and 61. They do not meet the minimum requirement as set out in 6.9 Landscaping Consideration, Tree Planting Restrictions (- The underside of footing (USF) is 2.1m or greater) outlined in the Geotechnical Investigation Carp Airport Servicing and Residential Development - Phase 1, (Carp) Ottawa, Ontario January 16, 2023. Prepared by Paterson Group.



PLANT LIST

102085 - West Capital Airport - Phase 1B-2 - L2B - Plant List

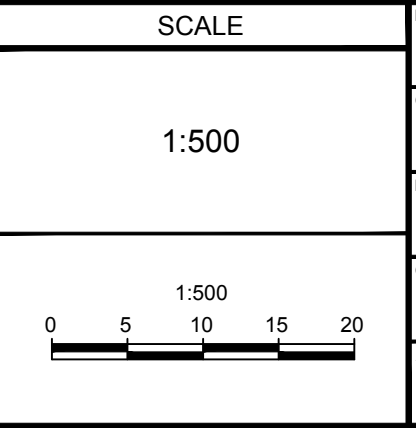
REV	QTY	BOTANICAL NAME	COMMON NAME	SIZE	MATURE SIZE	COND	SPACING
ART	3	<i>Acer rubrum</i> 'Frankford'	Red Sunset Red Maple	50mm Cal	15m Ht. x 12m spd.	WB	As Shown
ARC	7	<i>Acer rubrum</i> 'Scarson'	Scarlet Sentinel Red Maple	50mm Cal	14m Ht. x 8m spd.	WB	As Shown
AFCM	4	<i>Acer x freemanii</i> 'Celtzam'	Celebration Maple	50mm Cal	14m Ht. x 8m spd.	WB	As Shown
CCO	4	<i>Corylus colurna</i>	Turkish Hazelnut	50mm Cal	15m Ht. x 8m spd.	WB	As Shown
GBP	2	<i>Ginkgo biloba</i> 'Princeton Sentry'	Princeton Sentry Ginkgo	50mm Cal	15m Ht. x 8m spd.	WB	As Shown
GTU	9	<i>Gleditsia triacanthos</i> var. <i>inermis</i> 'Sunburst'	Sunburst Honeylocust	50mm Cal	12m Ht. x 12m spd.	WB	As Shown
QXA	12	<i>Quercus x alba x robur</i> 'Stewartsp' (JFS-ATWQ)	Stewartsp Oak	50mm Cal	14m Ht. x 5m spd.	WB	As Shown
TCC	2	<i>Tilia cordata</i> 'Coram'	Common Linden	50mm Cal	12m Ht. x 5m spd.	WB	As Shown
TMH	4	<i>Tilia cordata</i> x <i>mongolica</i> 'Harvest Gold'	Harvest Gold Linden	50mm Cal	13m Ht. x 10m spd.	WB	As Shown
TTS	2	<i>Tilia tomentosa</i> 'Sterling'	Sterling Silver Linden	50mm Cal	15m Ht. x 10m spd.	WB	As Shown
LUPE	1	<i>Ulmus praeinquinatus</i> 'JFS-Bieberich'	Emerald Sunshine Elm	50mm Cal	11m Ht. x 8m spd.	WB	As Shown
LNH	13	<i>Ulmus japonicus</i> x <i>pumila</i> 'New Horizon'	New Horizon Elm	50mm Cal	13m Ht. x 8m spd.	WB	As Shown

NOTE: THE POSITION OF ALL POLE LINES, CONDUITS, WATERMANS, SEWERS AND OTHER UNDERGROUND AND OVERGROUND UTILITIES AND STRUCTURES IS NOT NECESSARILY SHOWN ON THE CONTRACT DRAWINGS, AND WHERE SHOWN, THE ACCURACY OF THE POSITION OF SUCH UTILITIES AND STRUCTURES IS NOT GUARANTEED. BEFORE STARTING WORK, DETERMINE THE EXACT LOCATION OF ALL SUCH UTILITIES AND STRUCTURES AND ASSUME ALL LIABILITY FOR DAMAGE TO THEM.



NOT FOR CONSTRUCTION

No.	REVISION	DATE	BY
1.	ISSUED FOR REVIEW	FEB 23/24	RGJ



FOR REVIEW ONLY

MEL
RGJ
MEL
RGJ
RGJ



LOCATION: CITY OF OTTAWA WEST CAPITAL AIRPARK

DRAWING NAME: LANDSCAPE PLAN - PHASE 1B-2

PROJECT No.: 102085-22

REV: #1

DRAWING No.: 102085-L2B