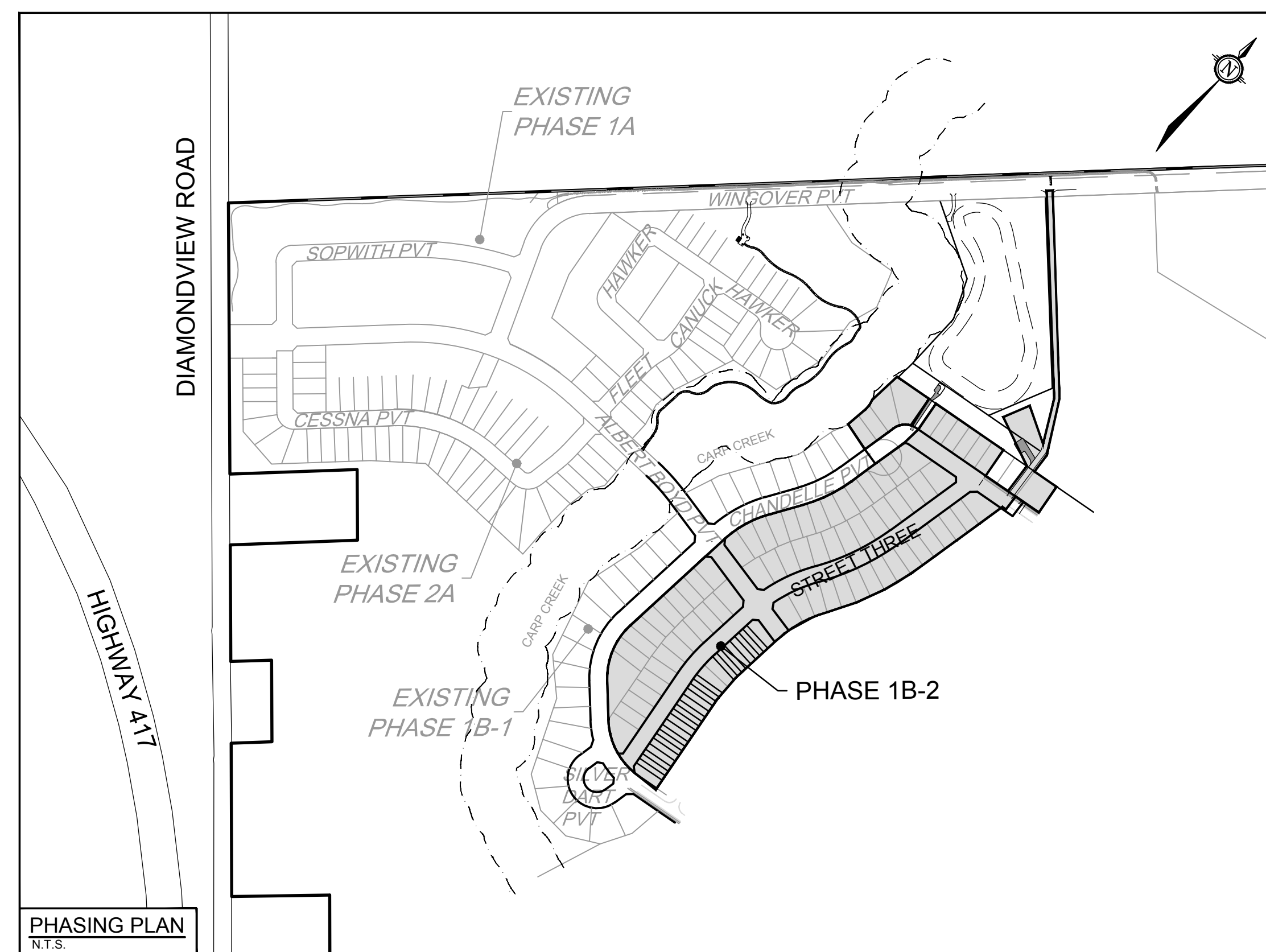
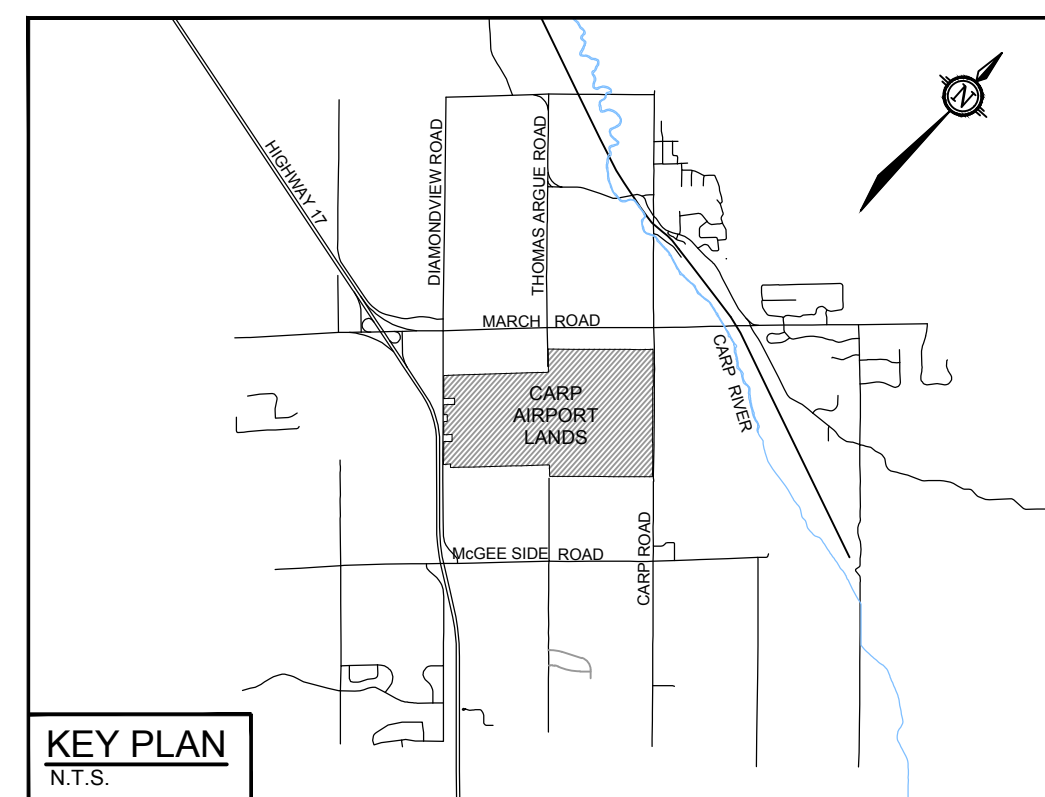


# WEST CAPITAL AIRPARK PHASE 1B-2 - RESIDENTIAL

## CITY OF OTTAWA

### ISSUED FOR REGISTRATION AND ECA



JUNE 2024

**NOVATECH**

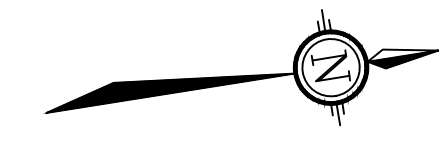
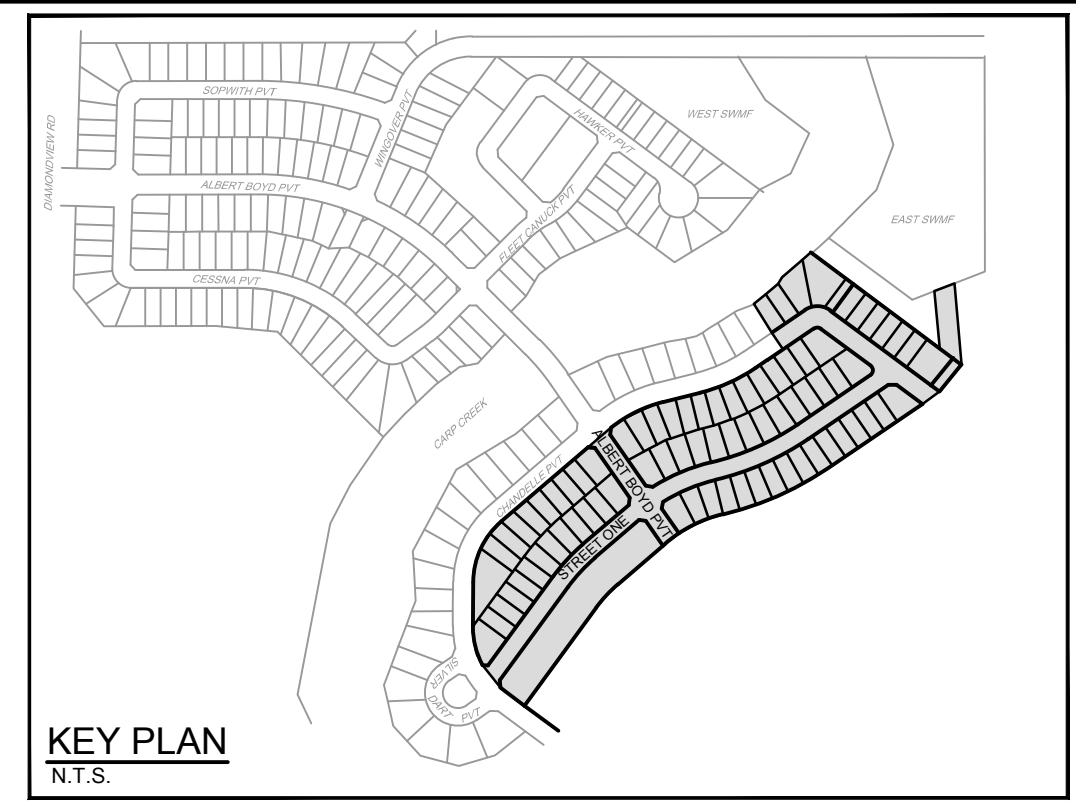
Engineers, Planners & Landscape Architects  
Suite 200, 240 Michael Cowpland Drive  
Ottawa, Ontario, Canada K2M 1P6

Telephone (613) 254-9643  
Facsimile (613) 254-5867  
Website www.novatech-eng.com

#### INDEX

|               |             |  |
|---------------|-------------|--|
| 102085-LP2    | REVISION 5  | PHASE 1B-2 DRAWING LAYOUT PLAN                                   |
| 102085-GP13   | REVISION 8  | GENERAL PLAN OF SERVICES   |
| 102085-GP14   | REVISION 10 | GENERAL PLAN OF SERVICES   |
| 102085-GR13   | REVISION 7  | GRADING PLAN   |
| 102085-GR14   | REVISION 9  | GRADING PLAN   |
| 102085-GR15   | REVISION 7  | GRADING PLAN - BLOCK 184   |
| 102085-P9     | REVISION 19 | CHANDELLE PVT STATION 9+335 TO STATION 9+600                     |
| 102085-P24    | REVISION 8  | CHANDELLE PVT STATION 9+900 TO STATION 10+175                    |
| 102085-P25    | REVISION 8  | STREET THREE STATION 11+000 TO STATION 11+300                    |
| 102085-P26    | REVISION 8  | STREET THREE STATION 11+300 TO STATION 11+539                    |
| 102085-P27    | REVISION 8  | ALBERT BOYD PVT STATION 1+640 TO STATION 1+781                   |
| 102085-P28    | REVISION 9  | BLOCK 109 & STM SEWER STATION 0+000 TO STATION 0+158<br>OUTLET   |
| 102085-SWM7   | REVISION 3  | STORMWATER MANAGEMENT PLAN                                       |
| 102085-SWM-CC | REVISION 2  | STORMWATER MANAGEMENT PLAN - COEFFICIENT CALCULATIONS            |
| 102085-ESC3   | REVISION 6  | EROSION AND SEDIMENT CONTROL PLAN                                |
| 102085-ND1B2  | REVISION 8  | NOTES AND DETAILS PLAN   |
| 102085-INF2   | REVISION 7  | INFILTRATION MEASURES PLAN                                       |
| 102085-SWMF5  | REVISION 8  | EAST STORMWATER MANAGEMENT FACILITY-<br>PHASE 1B-2 INLET DETAILS |
| 102085-SWMF6  | REVISION 4  | EAST STORMWATER MANAGEMENT FACILITY DETAILS                      |
| 102085-C1     | REVISION 10 | CLEARFORD SBS DETAIL SHEET                                       |
| 102085-C2     | REVISION 9  | CLEARFORD SBS DETAIL SHEET                                       |
| 102085-GRDD6  | REVISION 1  | GEOMETRIC ROAD DESIGN DRAWING                                    |
| 102085-GRDD7  | REVISION 1  | GEOMETRIC ROAD DESIGN DRAWING                                    |
| 102085-L2A    | REVISION 1  | LANDSCAPE PLAN - PHASE 1B-2                                      |
| 102085-L2B    | REVISION 1  | LANDSCAPE PLAN - PHASE 1B-2                                      |

PROJECT No. 102085



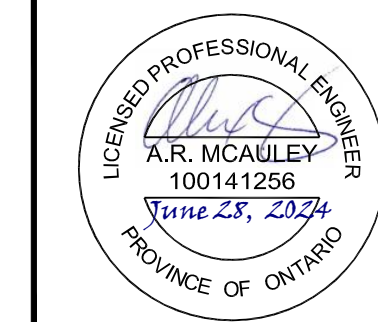
C:\2024\102085\CAD\PHASE2\2024-281-LP-model.dwg, Layout Plot, Jun 26, 2024, 1:35pm, anonymous

NOTE:  
 THE POSITION OF ALL POLE LINES, CONDUITS,  
 WATERMANS, SEWERS AND OTHER  
 UNDERGROUND AND OVERGROUND UTILITIES AND  
 STRUCTURES IS NOT NECESSARILY SHOWN ON  
 THE CONTRACT DRAWINGS, AND WHERE SHOWN,  
 THE ACCURACY OF THE POSITION OF SUCH  
 UTILITIES AND STRUCTURES IS NOT GUARANTEED.  
 BEFORE STARTING WORK, DETERMINE THE EXACT  
 LOCATION OF ALL SUCH UTILITIES AND  
 STRUCTURES AND ASSUME ALL LIABILITY FOR  
 DAMAGE TO THEM.

| No. | REVISION                                     | DATE      | BY  |
|-----|--|-----------|-----|
| 5.  | ISSUED FOR REGISTRATION AND ECA (NO CHANGES) | JUN 28/24 | ARM |
| 4.  | REVISED PER CITY COMMENTS (NO CHANGES)       | FEB 20/24 | ARM |
| 3.  | ISSUED WITH ADDENDUM #2 (NO CHANGES)         | JAN 5/24  | ARM |
| 2.  | ISSUED FOR TENDER (NO CHANGES)               | DEC 7/23  | ARM |
| 1.  | ISSUED FOR REVIEW                            | JUL 28/23 | ARM |

| SCALE  |  |
|--------|--|
| N.T.S. |  |

|          |     |
|----------|-----|
| DESIGN   | AAR |
| CHECKED  | ARM |
| DRAWN    | AAR |
| CHECKED  | ARM |
| APPROVED | SMG |



**NOVATECH**  
 Engineers, Planners & Landscape Architects  
 Suite 200, 240 Michael Cowpland Drive  
 Ottawa, Ontario, Canada K2M 1P6  
 Telephone: (613) 254-9643  
 Facsimile: (613) 254-5867  
 Website: www.novatech-eng.com

|   |                       |
|---|-----------------------|
| LOCATION<br>CITY OF OTTAWA<br>WEST CAPITAL AIRPARK  | PROJECT No.<br>102085 |
| DRAWING NAME<br>DRAWING LAYOUT PLAN -<br>PHASE 1B-2 | REV # 5               |
| DRAWING No.<br>102085-LP2                           |                       |