

# 21010 WILDPINE DEVELOPMENT

## TITLE PAGE

A001	TITLE PAGE
A003	STATISTICS
A101	SITE PLAN
A201	LEVEL P1
A202	LEVEL 1
A203	LEVEL 2-4
A204	ROOF
A351	GENERAL SECTION



(418) 651-8954  
INFO@PMAARCHITECTES.COM

3070, CHEMIN DES QUATRE-BOURGEOIS  
QUÉBEC (QC) G1W 2K4

[PMAARCHITECTES.COM](http://PMAARCHITECTES.COM)

# 21010 WILDPINE DEVELOPMENT

ARCHITECTURE

FOR CITY REVIEW

2024-01-19

D02-02-21-0106 / D07-16-21-0030



1202, CAMP ROAD, STITTSVILLE, ON K2S 1B9



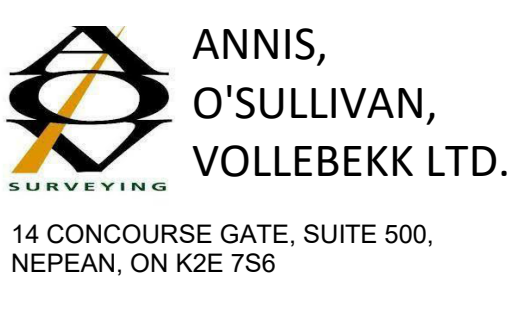
(416) 451-8954  
INFO@PMAARCHITECTES.COM  
3070, CHEMIN DES QUATRE-BOURGEOIS  
QUÉBEC (QC) G1W 2N6  
PMAARCHITECTES.COM



J.L. Richards  
ENGINEERS - ARCHITECTS - PLANNERS  
1565 CARLING AVENUE, SUITE 700,  
OTTAWA, ON K1Z 8R1



FOTENN  
Planning + Design  
396 Cooper Street, Suite 300, Ottawa, ON K2P 2H7  
613.730.5700 www.fotenn.com



ANNIS,  
O'SULLIVAN,  
VOLLEBEK LTD.  
14 CONCOURSE GATE, SUITE 500,  
NEPEAN, ON K2E 7S6



Kilgour & Associates Ltd.  
Environmental Consultants  
2285 ST-LAURENT BLVD, SUITE 160,  
OTTAWA, ON K1G 4Z6

NO	DESCRIPTION	DATE
1	ISSUE FOR PERMIT	2024-01-19
2	FOR CITY REVIEW	2024-01-19
3	FOR CITY REVIEW	2024-01-19

IT IS THE RESPONSIBILITY OF THE APPROPRIATE CONTRACTOR TO CHECK AND VERIFY ALL DIMENSIONS ON THE SITE AND TO REPORT ALL ERRORS AND/OR OMISSIONS TO THE ARCHITECT. ALL CONTRACTORS MUST COMPLY WITH ALL PERTINENT CODES AND BY-LAWS. DO NOT SCALE DRAWINGS.

THIS DOCUMENT AND ITS CONTENT IS COPYRIGHTED. ANY REPRODUCTION IS PROHIBITED UNLESS GRANTED BY THE ARCHITECT.

DATE	DESIGNED
2024-01-19	P.POMERLEAU
	DRAWN
	P.POMERLEAU
PROJECT No	CHECKED
21010	P.MARTIN
	SHEET TITLE

STATISTICS
------------

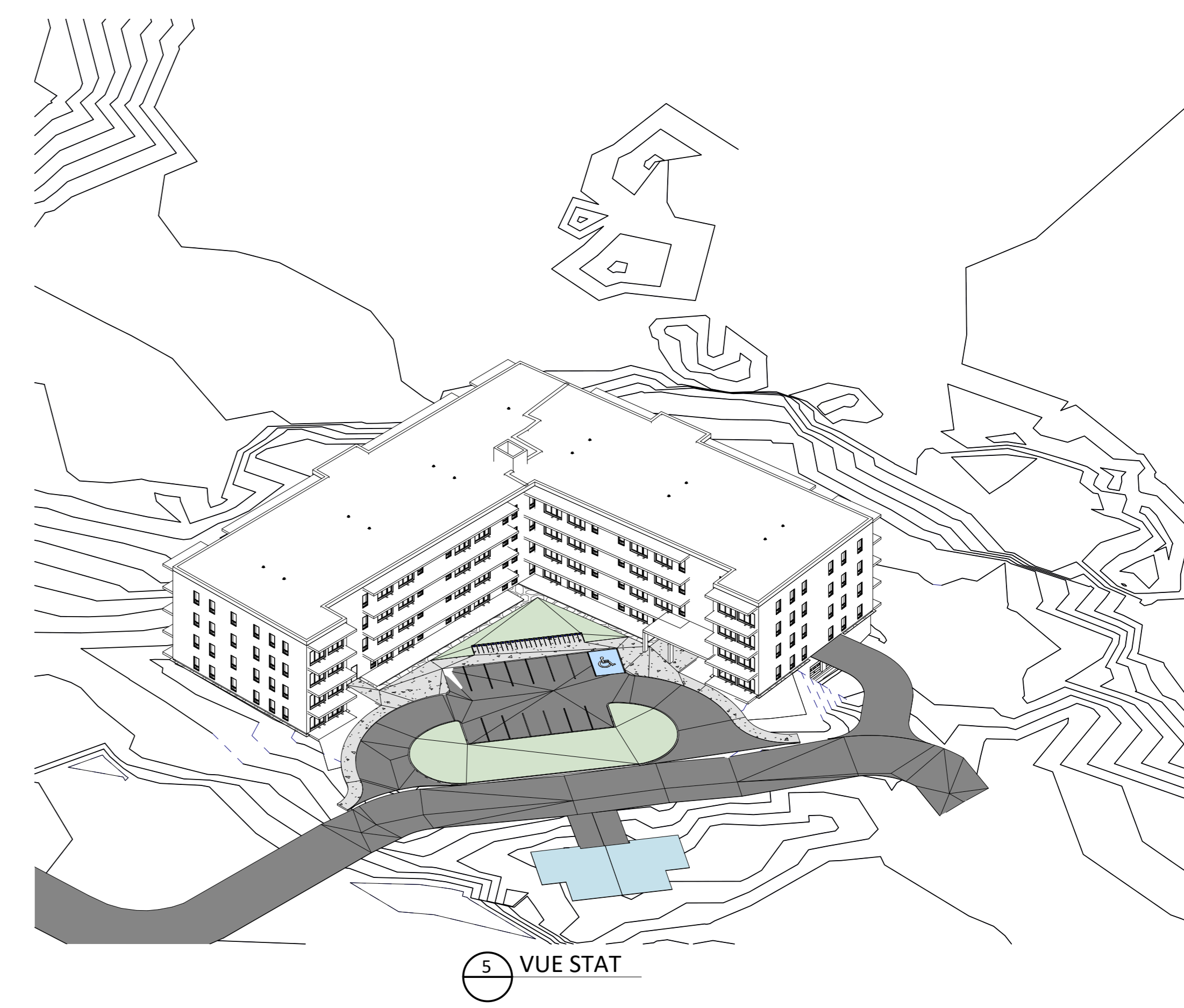
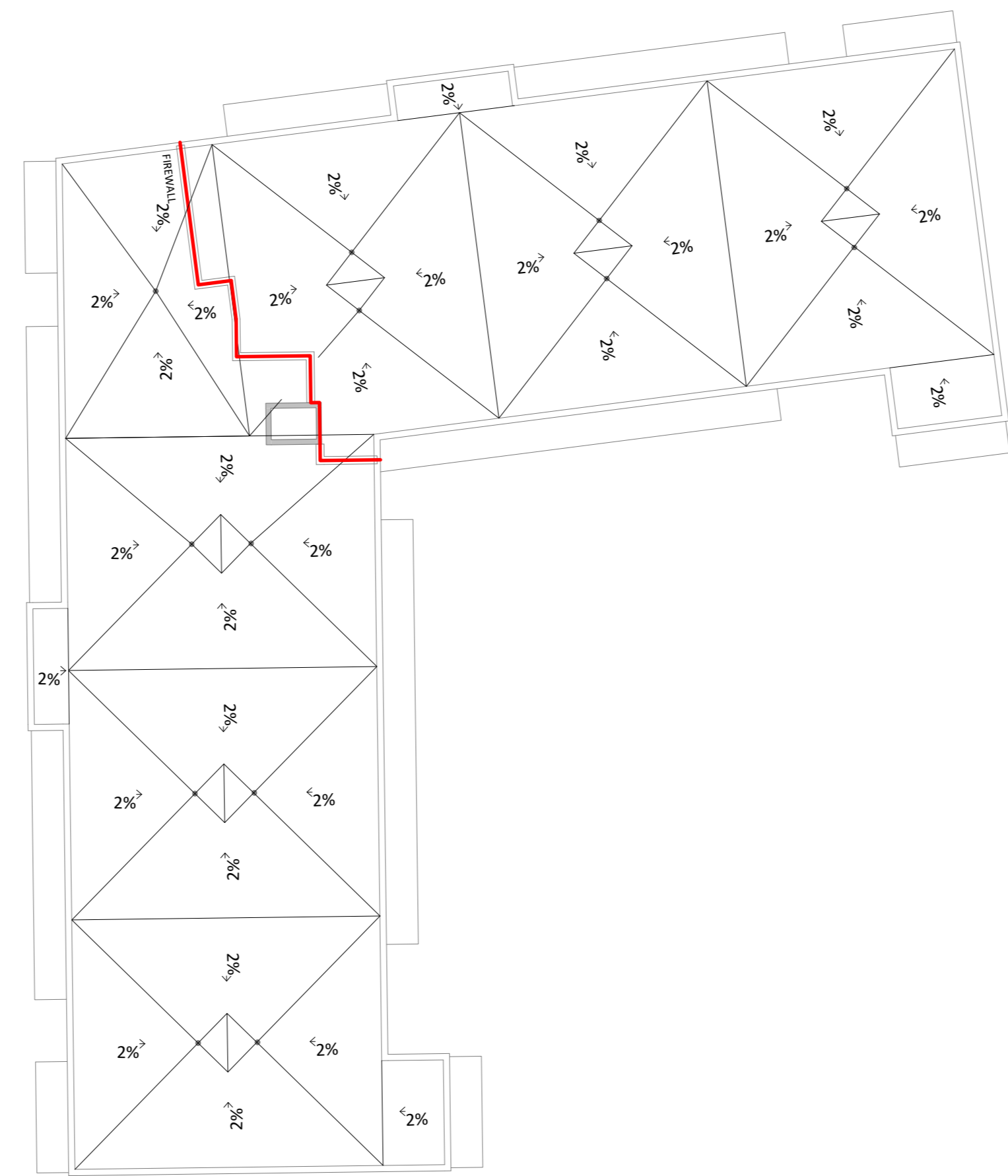
NUMBER OF PARKING		
LEVEL	NUMBER	TYPE
(AT GRADE) LEVEL 1	14	VISITOR
(AT GRADE) LEVEL 1	1	VISITOR - ACCESSIBLE
	15	

LEVEL P1	93	RESIDENTIAL
LEVEL P1	1	RESIDENTIAL - ACCESSIBLE
LEVEL P1	4	VISITOR
	98	
TOTAL	113	

NUMBER OF BIKE PARKING		
LEVEL	NUMBER	TYPE
(AT GRADE) LEVEL 1	23	BICYCLE - HORIZONTAL
	23	

LEVEL P1	10	BICYCLE - HORIZONTAL	● SEE DOT ON PLAN
LEVEL P1	50	BICYCLE - STACKED	● SEE DOT ON PLAN
	60		
TOTAL	83		

STATISTICS - TOTAL NUMBER OF UNITS						
TYPE	NUMBER	TOTAL GROSS AREA PER TYPE	TOTAL GROSS AREA PER TYPE	AVE. AREA	AVE. AREA	DISTRIBUTION
1 BED	31	19,736 ft <sup>2</sup>	1,834 m <sup>2</sup>	637 ft <sup>2</sup>	59 m <sup>2</sup>	33%
1 BED + DEN	29	22,087 ft <sup>2</sup>	2,052 m <sup>2</sup>	762 ft <sup>2</sup>	71 m <sup>2</sup>	31%
2 BED	26	24,313 ft <sup>2</sup>	2,259 m <sup>2</sup>	935 ft <sup>2</sup>	87 m <sup>2</sup>	28%
2 BED + DEN	8	9,245 ft <sup>2</sup>	859 m <sup>2</sup>	1,156 ft <sup>2</sup>	107 m <sup>2</sup>	9%
	94	75,381 ft <sup>2</sup>	7,003 m <sup>2</sup>	3,489 ft <sup>2</sup>	324 m <sup>2</sup>	

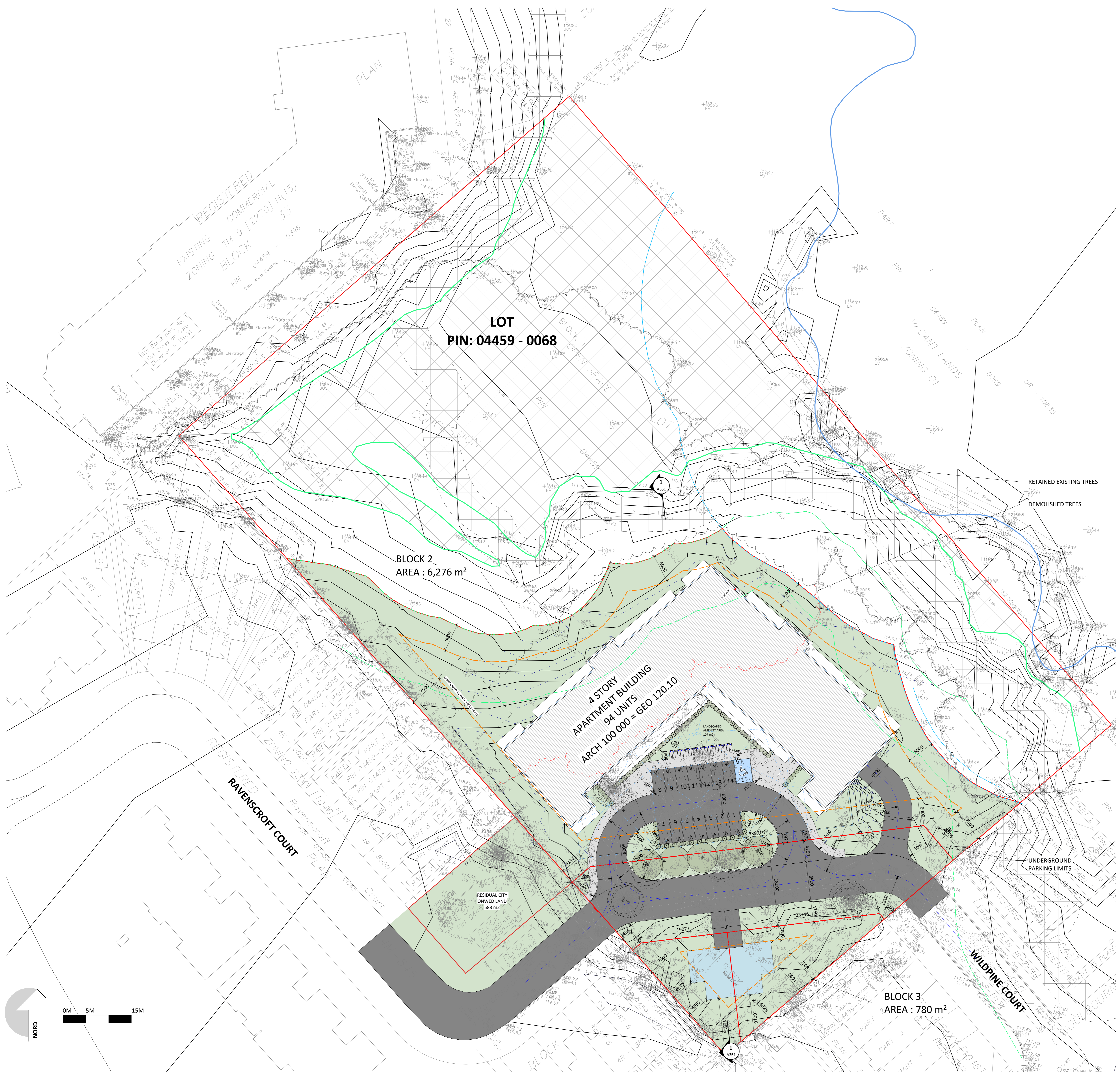


1 LEVEL P1  
SPA 06 1:300

3 LEVEL 2-4  
SPA 06 1:300

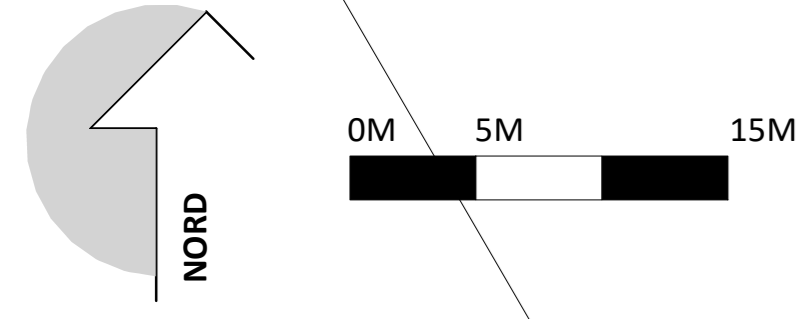
2 LEVEL 1  
SPA 06 1:300

4 ROOF  
SPA 06 1:300



**SITE PLAN LEGEND**

	EXISTING BUILDING		LOT LINE
	NEW BUILDING		SETBACKS
	EXISTING WETLANDS		POOLE CREEK - TOP OF BANK
	7.5m BUFFER FROM FLOOD PLAIN LINE		WETLAND BOUNDARY
	FIREWALL		SETBACK FROM TOP OF BANK +28 m
	GRASS		SETBACK FROM TOP OF BANK +30 m
	ASPHALT		SETBACK FROM WETLAND +15 m
	NEW TREE		SETBACK FROM WETLAND +30 m



PROJECT  
**WILDPINE DEVELOPMENT**

OWNER  
**LATITUDE Homes**  
1202, CAMP ROAD, STITTSVILLE, ON K2S 1B9

ARCHITECTURAL  
**PMA ARCHITECTES**  
(418) 451-8954  
INFO@PMAARCHITECTES.COM  
3070, CHEMIN DES QUATRE-BOURGEOIS  
QUÉBEC (QC) G1W 2N4  
PMAARCHITECTES.COM

CIVIL  
**J.L. Richards**  
ENGINEERS - ARCHITECTS - PLANNERS  
1565 CARLING AVENUE, SUITE 700,  
OTTAWA, ON K1Z 8R1

PLANNER  
**FOTENN Planning + Design**  
396 Cooper Street, Suite 300, Ottawa, ON K2P 2H7  
613.730.5700 www.fotenn.com

SURVEYOR  
**ANNIS, O'SULLIVAN, VOLLEBEK LTD.**  
14 CONCOURSE GATE, SUITE 500,  
NEPEAN, ON K2E 7S6

ENVIRONMENTAL CONSULTANT  
**Kilgour & Associates Ltd.**  
Environmental Consultants  
2285 ST-LAURENT BLVD, SUITE 160,  
OTTAWA, ON K1G 4Z6

KEY PLAN

ARCHITECT SEAL

REVISIONS

NO	DESCRIPTION	DATE
1	FOR CITY REVIEW	2024-01-19
2	FOR CITY REVIEW	2024-01-19

NOTE  
IT IS THE RESPONSIBILITY OF THE APPROPRIATE CONTRACTOR TO CHECK AND VERIFY ALL DIMENSIONS ON THE SITE AND TO REPORT ALL ERRORS AND/OR OMISSIONS TO THE ARCHITECT. ALL CONTRACTORS MUST COMPLY WITH ALL PERTINENT CODES AND BY-LAWS. DO NOT SCALE DRAWINGS.

THIS DOCUMENT AND ITS CONTENT IS COPYRIGHTED. ANY REPRODUCTION IS PROHIBITED UNLESS GRANTED BY THE ARCHITECT.

**DO NOT USE FOR CONSTRUCTION**

DATE 2024-01-19	DESIGNED P.POMERLEAU
	DRAWN P.POMERLEAU
PROJECT No 21010	CHECKED P.MARTIN

SHEET TITLE  
**SITE PLAN**

SHEET No  
**A101**

C:\Users\pomerleau\Documents\21010\_A\_SITE\_R21\_pomerleau\W453.rvt





1302, CAMP ROAD, STITTSVILLE, ON K2S 1B9



(418) 851-8954  
INFO@PMAARCHITECTES.COM  
3070, CHEMIN DES QUATRE-BOURGEOIS  
QUÉBEC (QC) G1W 2N6  
PMAARCHITECTES.COM



ENGINEERS - ARCHITECTS - PLANNERS  
1565 CARLING AVENUE, SUITE 700,  
OTTAWA, ON K1Z 8R1



396 Cooper Street, Suite 305, Ottawa, ON K2P 2H7  
613.730.5700 www.fotenn.com



14 CONCOURSE GATE, SUITE 500,  
NEPEAN, ON K2E 7S6



2285, ST-LAURENT BLVD, SUITE 160,  
OTTAWA, ON K1G 4Z6

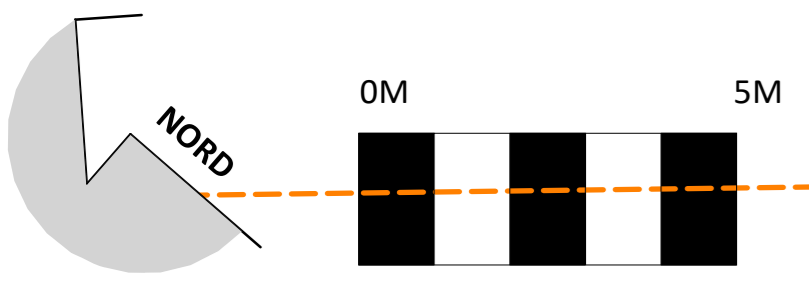
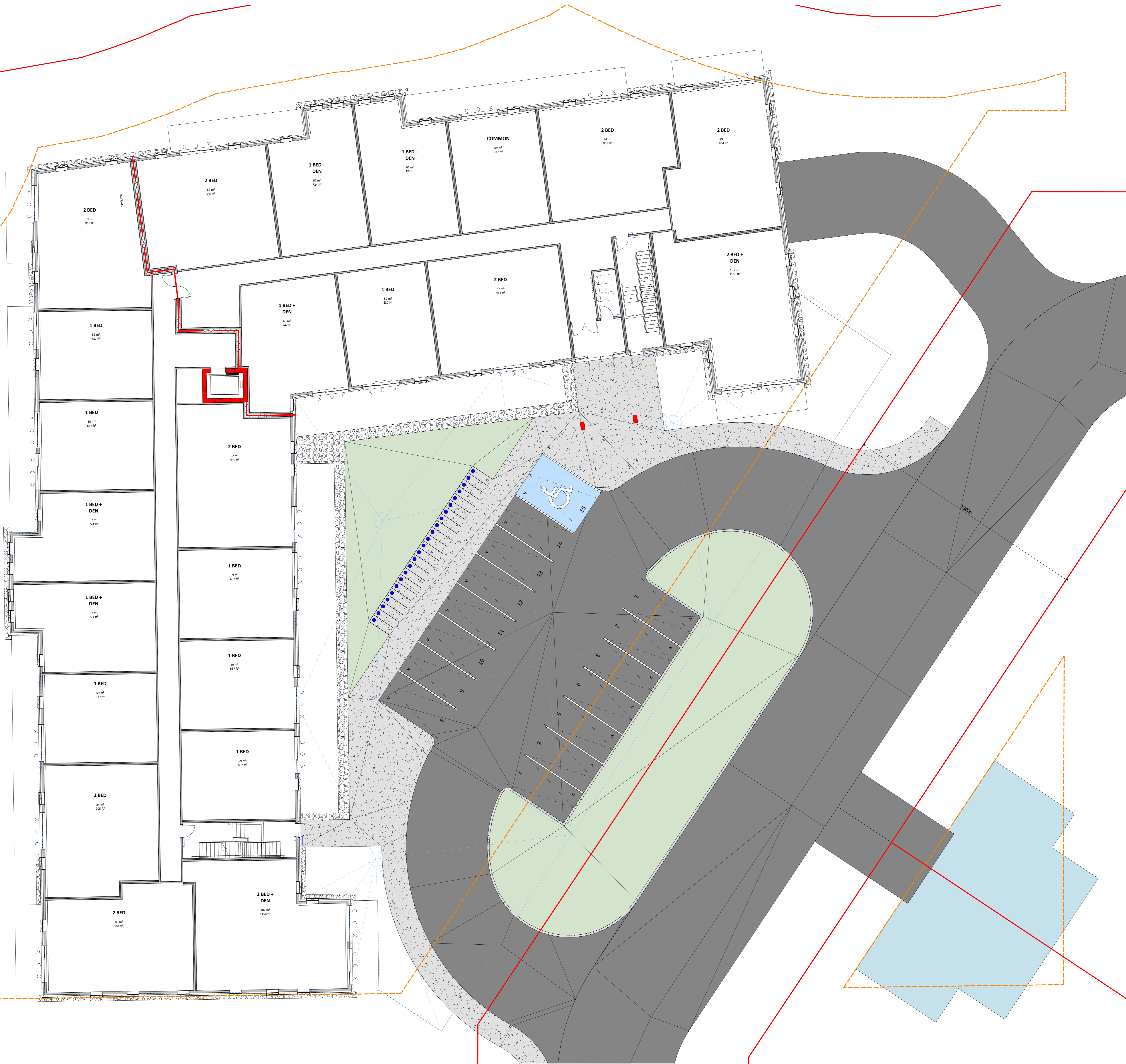
NO	DESCRIPTION	DATE
1	ISSUE FOR PERMIT	2024-01-19
2	FOR CITY REVIEW	2024-01-19
3	FOR CITY REVIEW	2024-01-19

IT IS THE RESPONSIBILITY OF THE APPROPRIATE CONTRACTOR TO CHECK AND VERIFY ALL DIMENSIONS ON THE SITE AND TO REPORT ALL ERRORS AND/OR OMISSIONS TO THE ARCHITECT. ALL CONTRACTORS MUST COMPLY WITH ALL PERTINENT CODES AND BY-LAWS. DO NOT SCALE DRAWINGS.

THIS DOCUMENT AND ITS CONTENT IS COPYRIGHTED. ANY REPRODUCTION IS PROHIBITED UNLESS GRANTED BY THE ARCHITECT.

**DO NOT USE FOR CONSTRUCTION**

DATE	DESIGNED
2024-01-19	P.POMERLEAU
	DRAWN
	P.POMERLEAU
PROJECT No	CHECKED
21010	P.MARTIN
	SHEET TITLE
	LEVEL 1



LEVEL 1  
S.P.A. 01/19  
1:100

C:\Users\ppomerleau\Documents\21010\_A\_SITE\_R21\_pomerleau\W453.rvt



1302, CAMP ROAD, STITTSVILLE, ON K2S 1B9



(418) 451-8954  
INFO@PMAARCHITECTES.COM  
3070, CHEMIN DES QUATRE-BOURGEOIS  
QUÉBEC (QC) G1W 2N6  
PMAARCHITECTES.COM



ENGINEERS - ARCHITECTS - PLANNERS  
1565 CARLING AVENUE, SUITE 700,  
OTTAWA, ON K1Z 8R1



386 Cooper Street, Suite 305, Ottawa, ON K2P 2H7  
613.730.5709 www.fotenn.com



14 CONCOURSE GATE, SUITE 500,  
NEPEAN, ON K2E 7S6



2285, ST-LAURENT BLVD, SUITE 160,  
OTTAWA, ON K1G 4Z6

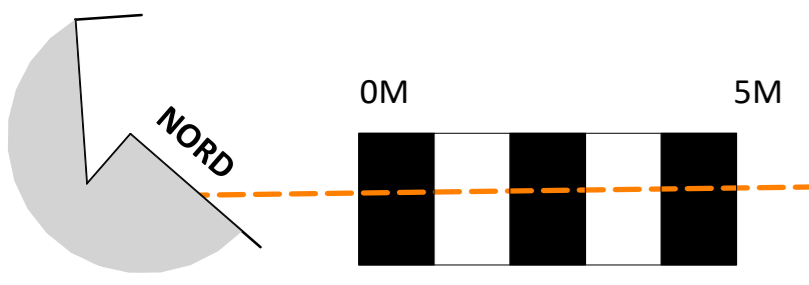
NO	DESCRIPTION	DATE
1	FOR CITY REVIEW	2024-01-19
2	FOR CITY REVIEW	2023-12-12

IT IS THE RESPONSIBILITY OF THE APPROPRIATE CONTRACTOR TO CHECK AND VERIFY ALL DIMENSIONS ON THE SITE AND TO REPORT ALL ERRORS AND/OR OMISSIONS TO THE ARCHITECT. ALL CONTRACTORS MUST COMPLY WITH ALL PERTINENT CODES AND BY-LAWS. DO NOT SCALE DRAWINGS.

THIS DOCUMENT AND ITS CONTENT IS COPYRIGHTED. ANY REPRODUCTION IS PROHIBITED UNLESS GRANTED BY THE ARCHITECT.

**DO NOT USE FOR CONSTRUCTION**

DATE	DESIGNED
2024-01-19	P.POMERLEAU
	DRAWN
	P.POMERLEAU
PROJECT No	CHECKED
21010	P.MARTIN
	SHEET TITLE
	LEVEL 2-4





1302, CAMP ROAD, STITTSVILLE, ON K2S 1B9



(418) 851-8954  
INFO@PMAARCHITECTES.COM  
3070, CHEMIN DES QUATRE-BOURGEOIS  
QUÉBEC (QC) G1W 2K4  
PMAARCHITECTES.COM



ENGINEERS - ARCHITECTS - PLANNERS  
1565 CARLING AVENUE, SUITE 700,  
OTTAWA, ON K1Z 8R1



386 Cooper Street, Suite 305, Ottawa, ON K2P 2H7  
613.733.5709 www.fotenn.com



14 CONCOURSE GATE, SUITE 500,  
NEPEAN, ON K2E 7S8



2285, ST-LAURENT BLVD, SUITE 160,  
OTTAWA, ON K1G 4Z6

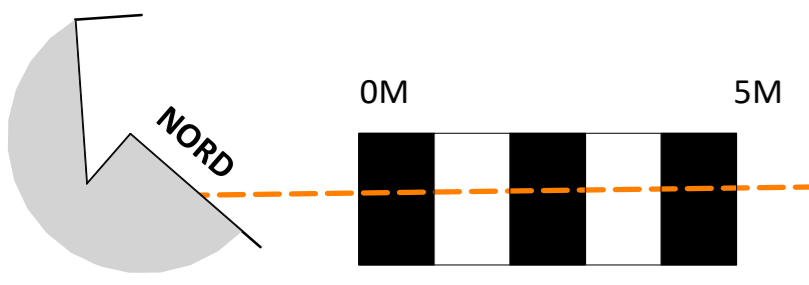
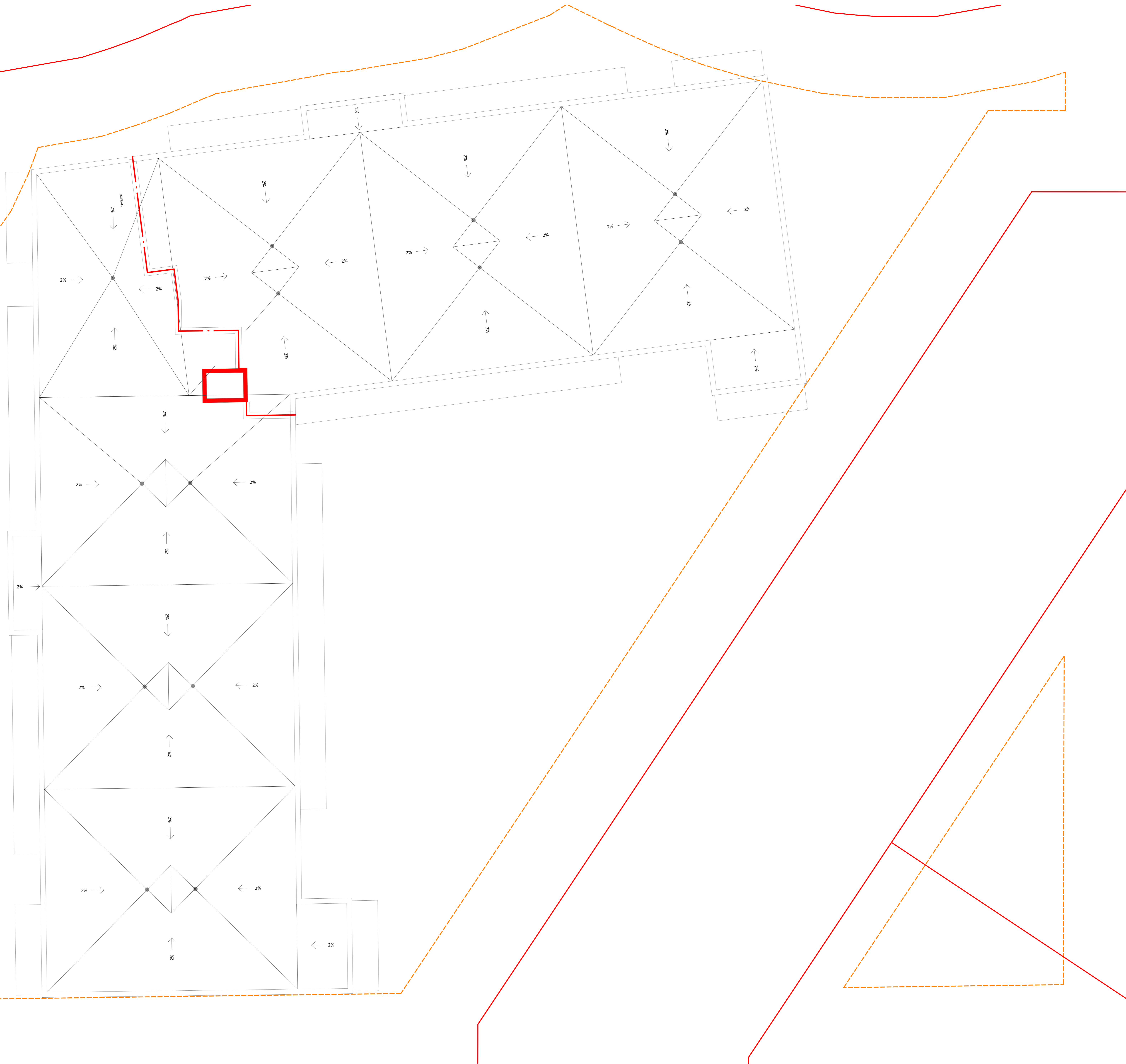
NO	DESCRIPTION	DATE
1	FOR CITY REVIEW	2024-01-19
2	FOR CITY REVIEW	2024-01-19

IT IS THE RESPONSIBILITY OF THE APPROPRIATE CONTRACTOR TO CHECK AND VERIFY ALL DIMENSIONS ON THE SITE AND TO REPORT ALL ERRORS AND/OR OMISSIONS TO THE ARCHITECT. ALL CONTRACTORS MUST COMPLY WITH ALL PERTINENT CODES AND BY-LAWS. DO NOT SCALE DRAWINGS.  
THIS DOCUMENT AND ITS CONTENT IS COPYRIGHTED. ANY REPRODUCTION IS PROHIBITED UNLESS GRANTED BY THE ARCHITECT.

**DO NOT USE FOR CONSTRUCTION**

DATE: 2024-01-19  
DESIGNED: P.POMERLEAU  
DRAWN: P.POMERLEAU  
PROJECT No: 21010  
CHECKED BY: P.MARTIN

SHEET TITLE  
**ROOF**





1202, CARP ROAD, STITTSVILLE, ON K2S 1B9



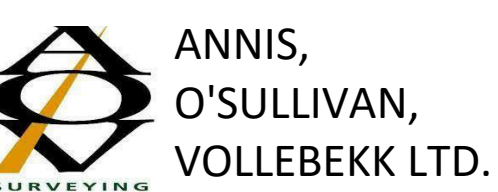
(418) 451-8954  
INFO@PMAARCHITECTES.COM  
3070, CHEMIN DES QUATRE-BOURGEOIS  
QUÉBEC (CQ) G1W 2K6  
PMAARCHITECTES.COM



**J.L. Richards**  
ENGINEERS - ARCHITECTS - PLANNERS  
1565 CARLING AVENUE, SUITE 700,  
OTTAWA, ON K1Z 8R1



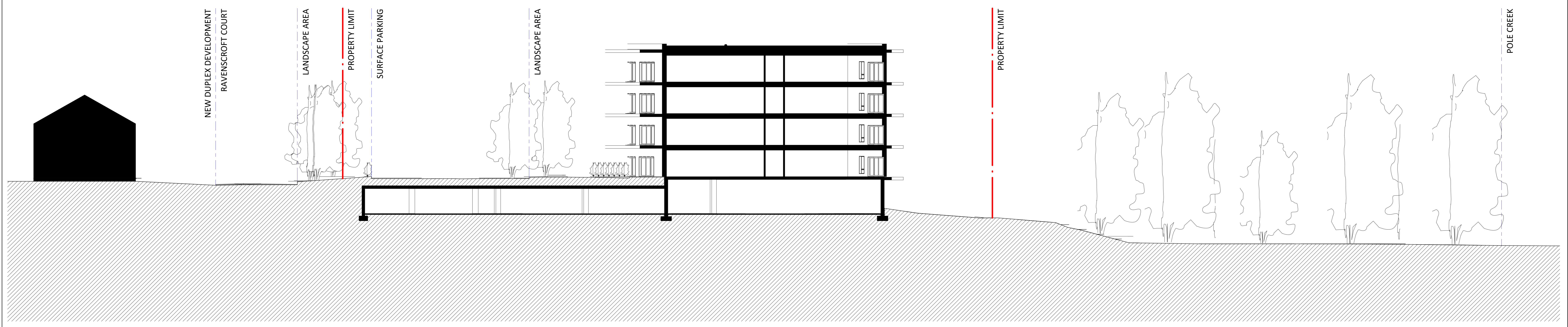
386 Copper Street, Suite 305, Ottawa, ON K2P 2H7  
613.733.5700 www.fotenn.com



14 CONCOURSE GATE, SUITE 500,  
NEPEAN, ON K2E 7S6



2285 ST-JAURENT BLVD, SUITE 160,  
OTTAWA, ON K1G 4Z6



1 GENERAL SECTION  
A101 1:150

NO	DESCRIPTION	DATE
1	FOR CITY REVIEW	2024-01-19
2	FOR CITY REVIEW	2024-01-19
3	FOR CITY REVIEW	2024-01-19

IT IS THE RESPONSIBILITY OF THE APPROPRIATE CONTRACTOR TO CHECK AND VERIFY ALL DIMENSIONS ON THE SITE AND TO REPORT ALL ERRORS AND/OR OMISSIONS TO THE ARCHITECT. ALL CONTRACTORS MUST COMPLY WITH ALL PERTINENT CODES AND BY-LAWS. DO NOT SCALE DRAWINGS.  
THIS DOCUMENT AND ITS CONTENT IS COPYRIGHTED. ANY REPRODUCTION IS PROHIBITED UNLESS GRANTED BY THE ARCHITECT.

**DO NOT USE FOR CONSTRUCTION**

DATE: 2024-01-19  
DESIGNED: P.POMERLEAU  
DRAWN: P.POMERLEAU  
PROJECT No: 21010  
CHECKED: P.MARTIN

SHEET TITLE  
GENERAL SECTION