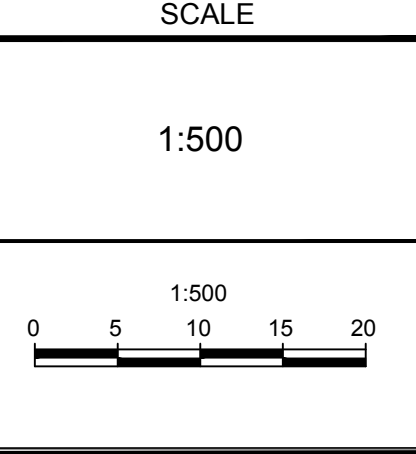


- LEGEND:**
- RESIDENTIAL AREA
 - COMMERCIAL AREA
 - PARKING AREA
 - RETAIL AREA
 - LANDSCAPING (SOFT) AREA
 - PROPOSED SANITARY SEWER C/W MANHOLE
 - PROPOSED STORM SEWER C/W MANHOLE
 - PROPOSED WATER MAIN
 - EXISTING WATERMAIN C/W WATER VALVE
 - EXISTING SANITARY MANHOLE & SEWER
 - EXISTING STORM MANHOLE & SEWER
 - EXISTING CATCHBASIN

NOTE:
 THE POSITION OF ALL POLE LINES, CONDUITS, WATERMANS, SEWERS AND OTHER UNDERGROUND AND OVERGROUND UTILITIES AND STRUCTURES IS NOT NECESSARILY SHOWN ON THE CONTRACT DRAWINGS, AND WHERE SHOWN, THE ACCURACY OF THE POSITION OF SUCH UTILITIES AND STRUCTURES IS NOT GUARANTEED. BEFORE STARTING WORK, DETERMINE THE EXACT LOCATION OF ALL SUCH UTILITIES AND STRUCTURES AND ASSUME ALL LIABILITY FOR DAMAGE TO THEM.

Owner:
 March + Main Developments Inc. and
 591-595 March Road Development Inc.
 Daniel Byrne
 109 Atlantic Avenue, Unit 3028
 Toronto, ON
 M6K 1X4
 (416) 530-2438

No.	REVISION	DATE	BY
2.	ISSUED FOR DRAFT SUBMISSION	DEC 15/23	FST
1.	ISSUED FOR CITY APPROVAL	NOV 11/22	FST



FOR REVIEW ONLY

DESIGN	FST/DMM
CHECKED	FST
DRAWN	DMM
CHECKED	FST
APPROVED	FST

PROFESSIONAL ENGINEER
 F.S. THAUETTE
 1000412990
 DEC 15/23
 PROVINCE OF ONTARIO

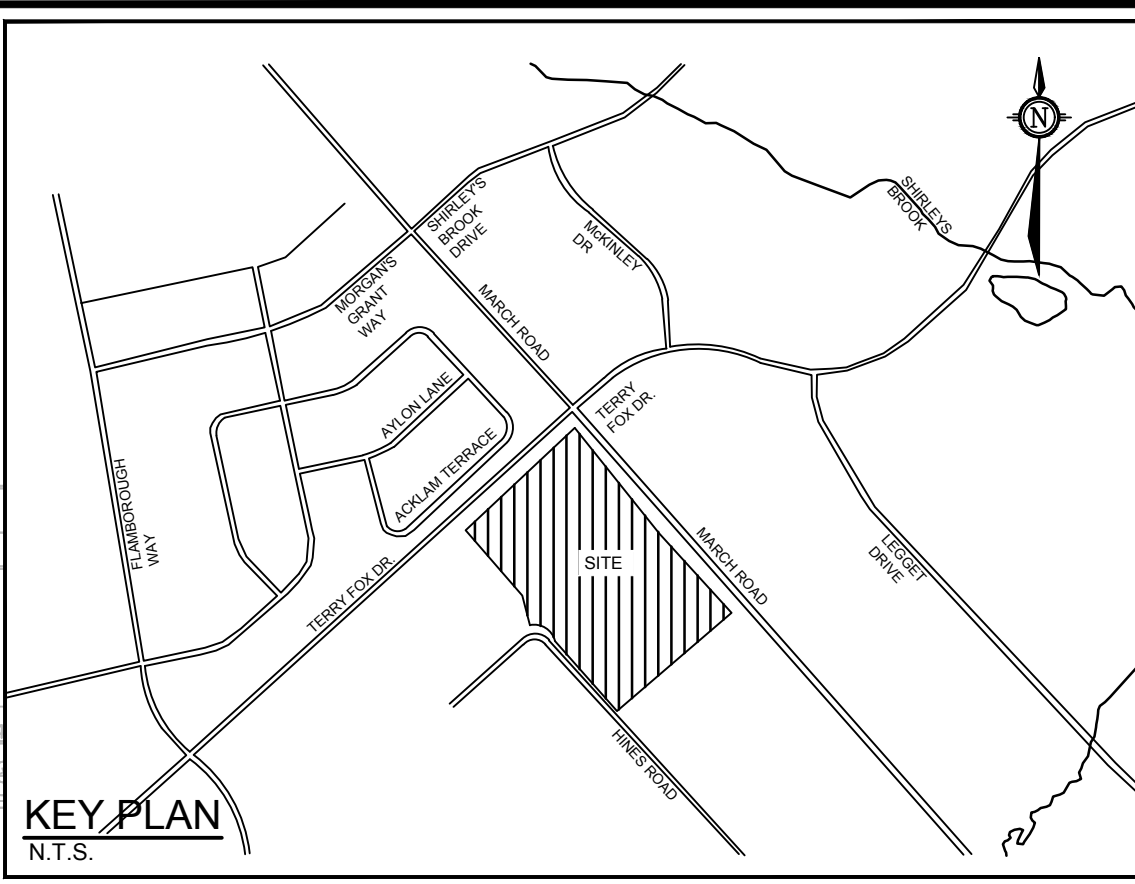
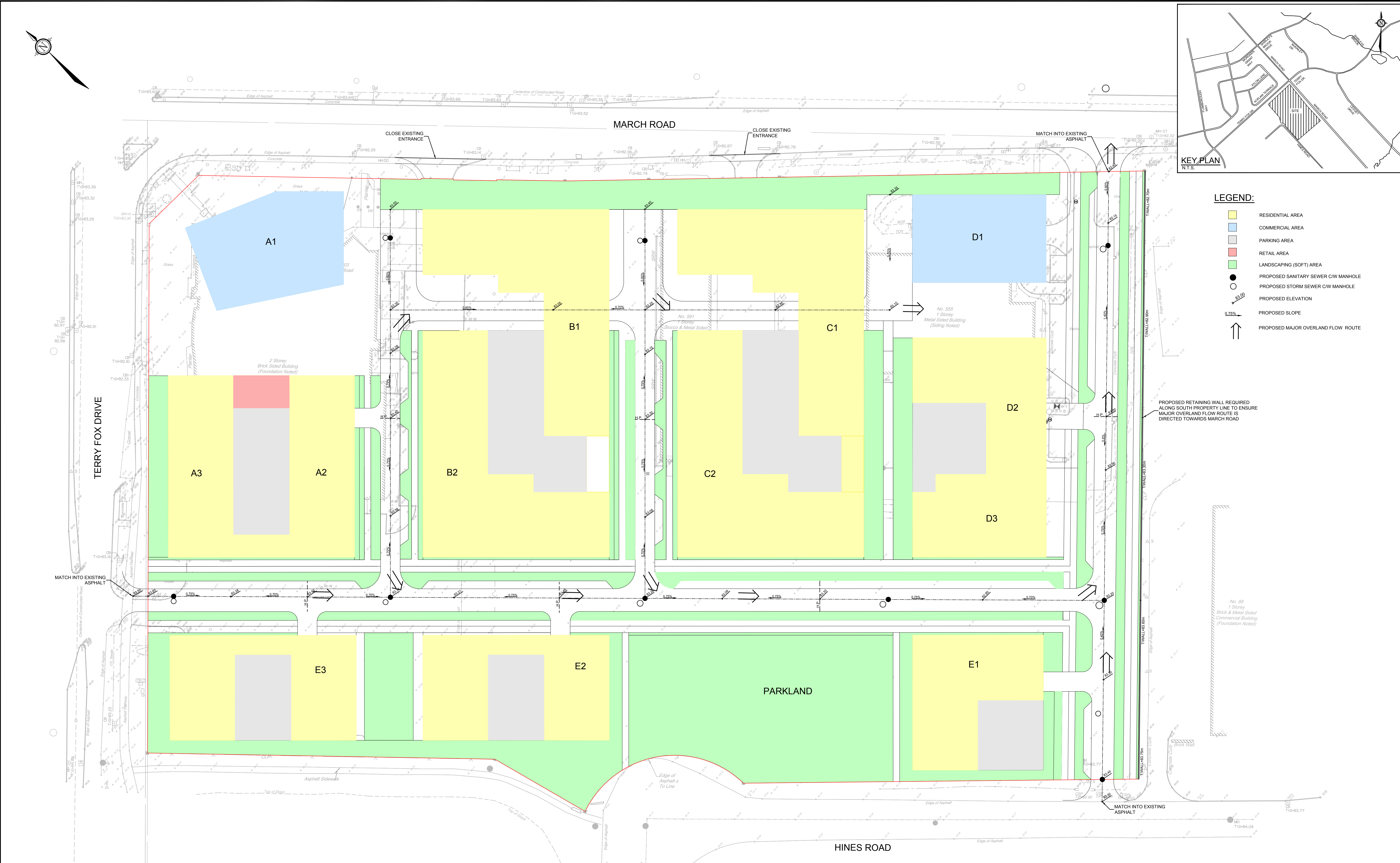
NOVATECH
 Engineers, Planners & Landscape Architects
 Suite 200, 240 Michael Cowpland Drive
 Ottawa, Ontario, Canada K2M 1P6
 Telephone (613) 254-9643
 Facsimile (613) 254-5667
 Website www.novatech-eng.com

LOCATION
 CITY OF OTTAWA
 555, 591, 595 & 603 MARCH ROAD

DRAWING NAME
 CONCEPTUAL SERVICING PLAN

PROJECT No. 122126
 REV # 2
 DRAWING No. C-1

H:\2023\122126\CAD\Drawings\122126-Report Drawings.dwg, CGP, Nov 10, 2022 - 11:36am, dmaraha



- LEGEND:**
- RESIDENTIAL AREA
 - COMMERCIAL AREA
 - PARKING AREA
 - RETAIL AREA
 - LANDSCAPING (SOFT) AREA
 - PROPOSED SANITARY SEWER CW MANHOLE
 - PROPOSED STORM SEWER CW MANHOLE
 - PROPOSED ELEVATION
 - PROPOSED SLOPE
 - PROPOSED MAJOR OVERLAND FLOW ROUTE

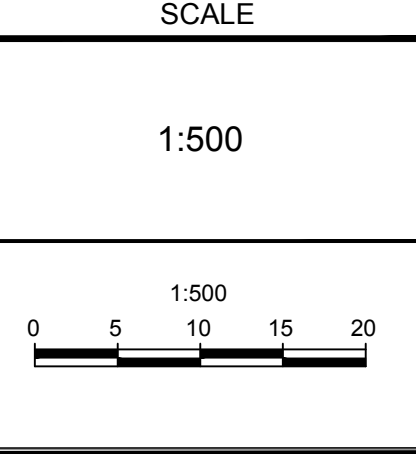
PROPOSED RETAINING WALL REQUIRED ALONG SOUTH PROPERTY LINE TO ENSURE MAJOR OVERLAND FLOW ROUTE IS DIRECTED TOWARDS MARCH ROAD

No. 89
1 Storey
Brick & Metal Sided
Commercial Building
(Foundation Noted)

NOTE:
THE POSITION OF ALL POLE LINES, CONDUITS, WATERMANS, SEWERS AND OTHER UNDERGROUND AND OVERGROUND UTILITIES AND STRUCTURES IS NOT NECESSARILY SHOWN ON THE CONTRACT DRAWINGS, AND WHERE SHOWN, THE ACCURACY OF THE POSITION OF SUCH UTILITIES AND STRUCTURES IS NOT GUARANTEED. BEFORE STARTING WORK, DETERMINE THE EXACT LOCATION OF ALL SUCH UTILITIES AND STRUCTURES AND ASSUME ALL LIABILITY FOR DAMAGE TO THEM.

Owner:
March + Main Developments Inc. and
591-595 March Road Development Inc.
Daniel Byrne
109 Atlantic Avenue, Unit 302B
Toronto, ON
M6K 1X4
(416) 530-2438

No.	REVISION	DATE	BY
2.	ISSUED FOR DRAFT SUBMISSION	DEC 15/23	FST
1.	ISSUED FOR CITY APPROVAL	NOV 11/22	FST



DESIGN	FST/DMM
CHECKED	FST
DRAWN	DMM
CHECKED	FST
APPROVED	FST

FOR REVIEW ONLY



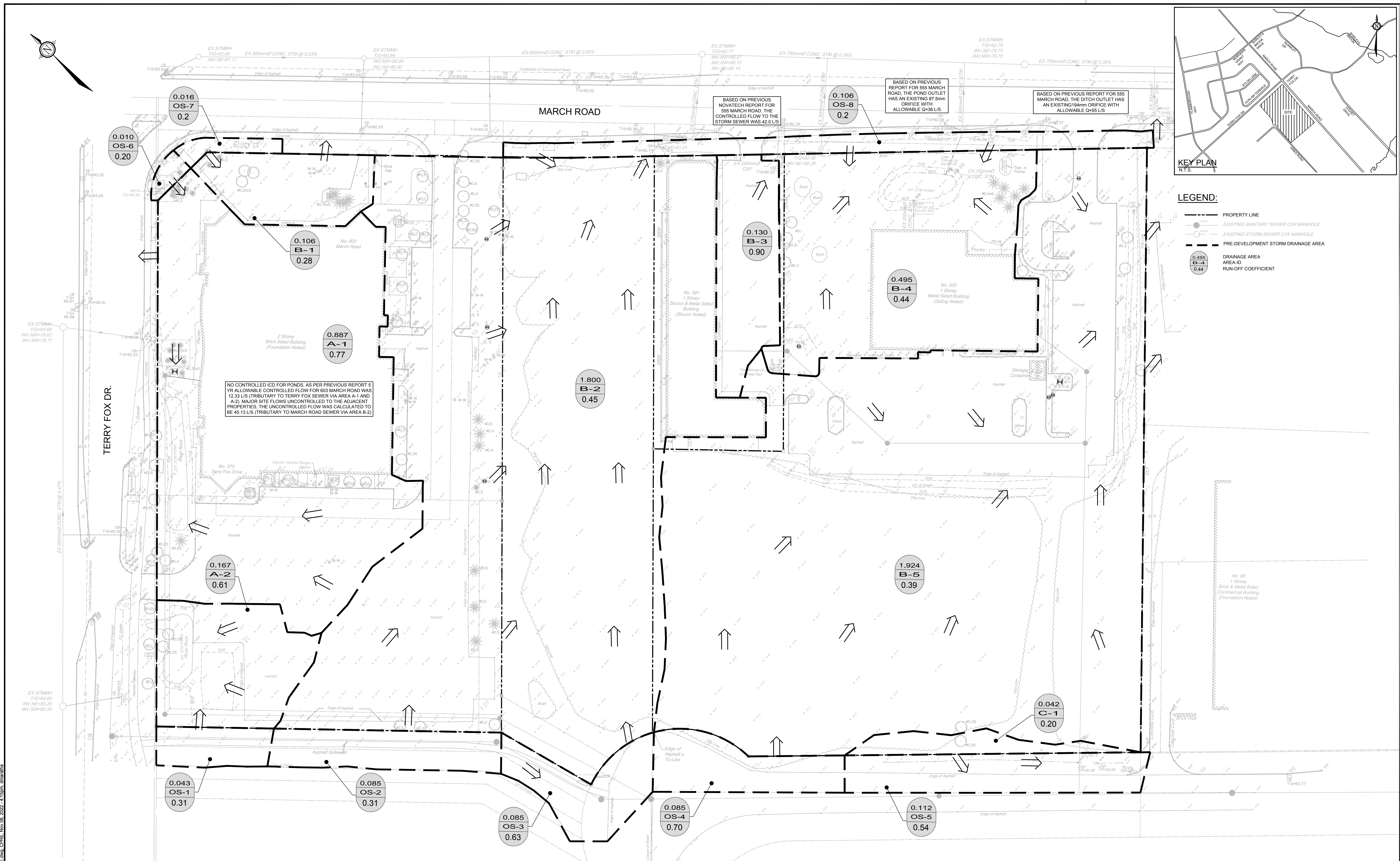
NOVATECH
Engineers, Planners & Landscape Architects
Suite 200, 240 Michael Cowpland Drive
Ottawa, Ontario, Canada K2M 1P6
Telephone (613) 254-9643
Facsimile (613) 254-5667
Website www.novatech-eng.com

LOCATION
CITY OF OTTAWA
555, 591, 595 & 603 MARCH ROAD

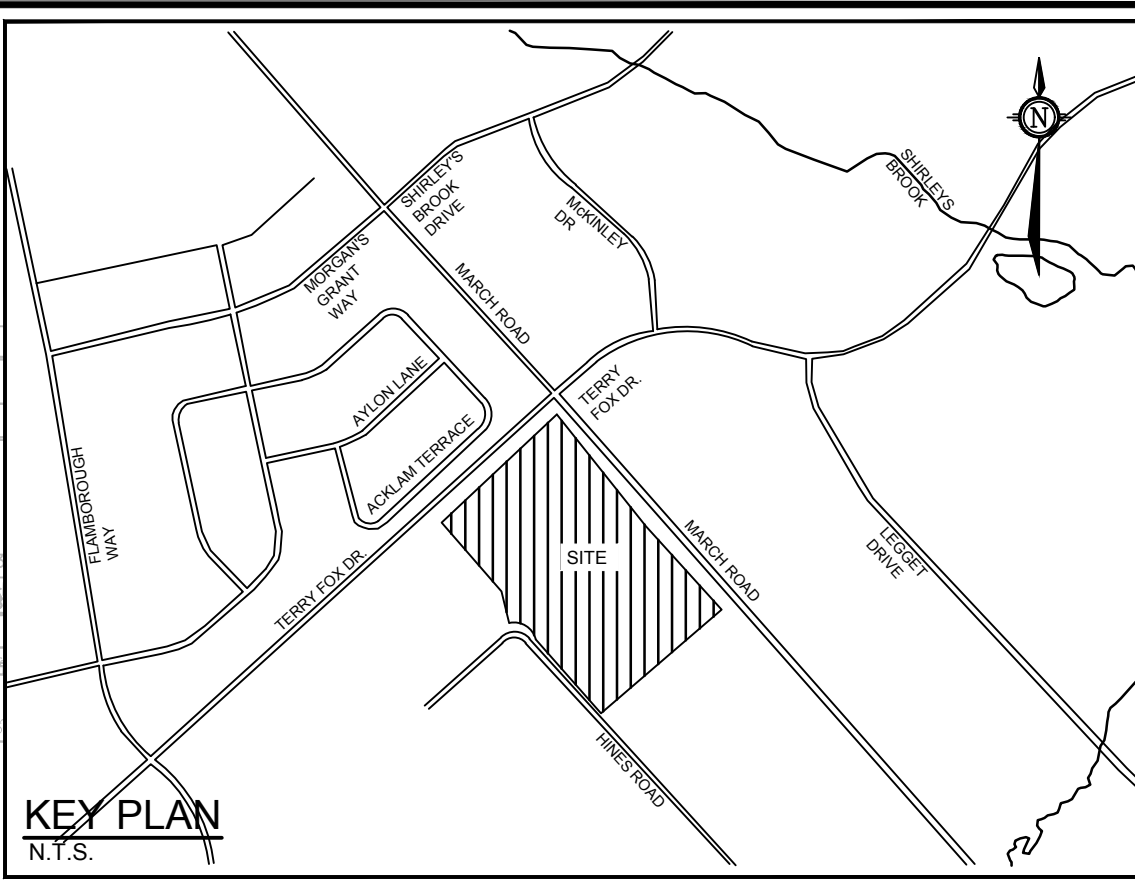
DRAWING NAME
CONCEPTUAL GRADING PLAN

PROJECT No.	122126
REV # 2	
DRAWING No.	C-2

H:\2023\122126\CAD\Drawings\City\Address\122126-Report Drawings.dwg, CGR, Nov 10, 2022 - 11:42am, dtharsha



NO CONTROLLED ICD FOR PONDS. AS PER PREVIOUS REPORT 5 YR ALLOWABLE CONTROLLED FLOW FOR 603 MARCH ROAD WAS 12.33 L/S (TRIBUTARY TO TERRY FOX SEWER VIA AREA A-1 AND A-2). MAJOR SITE FLOWS UNCONTROLLED TO THE ADJACENT PROPERTIES. THE UNCONTROLLED FLOW WAS CALCULATED TO BE 45.13 L/S (TRIBUTARY TO MARCH ROAD SEWER VIA AREA B-2)

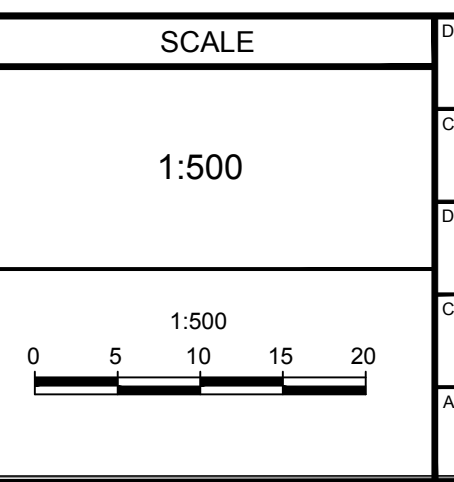


- LEGEND:**
- PROPERTY LINE
 - EXISTING SANITARY SEWER CW MANHOLE
 - EXISTING STORM SEWER CW MANHOLE
 - - - PRE-DEVELOPMENT STORM DRAINAGE AREA
 - DRAINAGE AREA AREA-ID
 - RUN-OFF COEFFICIENT

NOTE:
 THE POSITION OF ALL POLE LINES, CONDUITS, WATERMANS, SEWERS AND OTHER UNDERGROUND AND OVERGROUND UTILITIES AND STRUCTURES IS NOT NECESSARILY SHOWN ON THE CONTRACT DRAWINGS, AND WHERE SHOWN, THE ACCURACY OF THE POSITION OF SUCH UTILITIES AND STRUCTURES IS NOT GUARANTEED. BEFORE STARTING WORK, DETERMINE THE EXACT LOCATION OF ALL SUCH UTILITIES AND STRUCTURES AND ASSUME ALL LIABILITY FOR DAMAGE TO THEM.

Owner:
 March + Main Developments Inc. and
 591-595 March Road Development Inc.
 Daniel Byrne
 109 Atlantic Avenue, Unit 302B
 Toronto, ON
 M6K 1X4
 (416) 530-2438

No.	REVISION	DATE	BY
2.	ISSUED FOR DRAFT SUBMISSION	DEC 15/23	FST
1.	ISSUED FOR CITY APPROVAL	NOV 11/22	FST



FOR REVIEW ONLY

DESIGN	FST/DMM
CHECKED	FST
DRAWN	DMM
CHECKED	FST
APPROVED	FST

PROFESSIONAL ENGINEER
 F.S. THAUVERTE
 100041299
 DEC 15/23
 PROVINCE OF ONTARIO

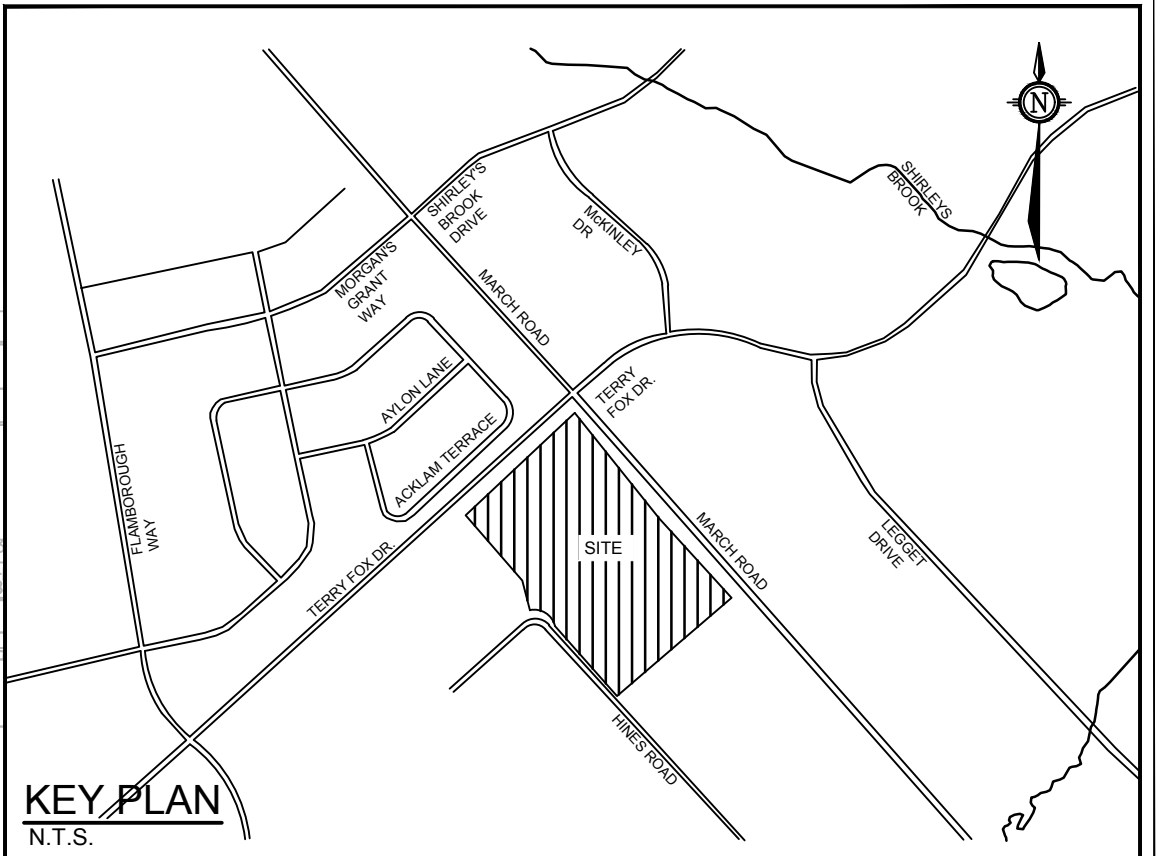
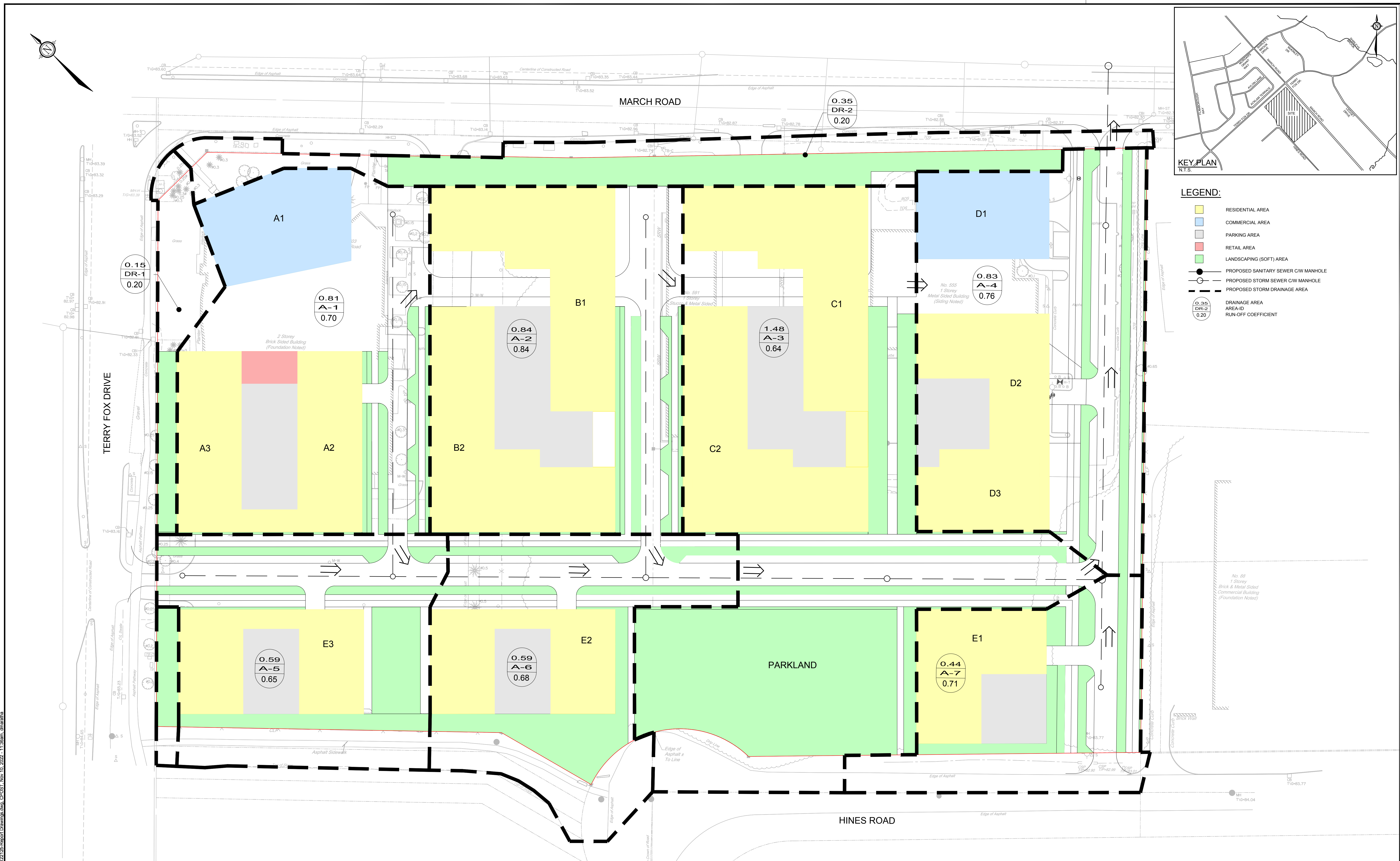
NOVATECH
 Engineers, Planners & Landscape Architects
 Suite 200, 240 Michael Cowpland Drive
 Ottawa, Ontario, Canada K2M 1P6
 Telephone (613) 254-9643
 Facsimile (613) 254-5667
 Website www.novatech-eng.com

LOCATION
 CITY OF OTTAWA
 555, 591, 595 & 603 MARCH ROAD

DRAWING NAME
PRE-DEVELOPMENT STORM DRAINAGE AREA PLAN

PROJECT No. 122126
 REV # 2
 DRAWING No. C-3

14/2023/121/20/CADD/rev/04/121/25/5-RE.dwg, CPRE, Nov 08, 2022, 4:15pm, dmarantz

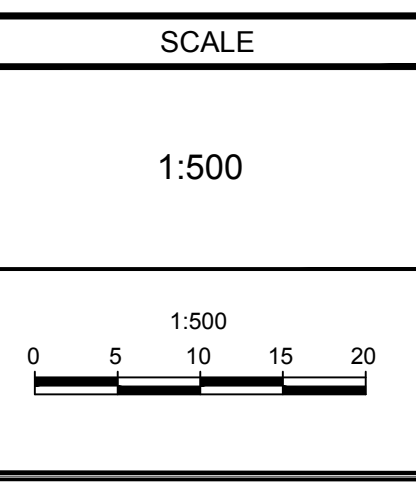


- LEGEND:**
- RESIDENTIAL AREA
 - COMMERCIAL AREA
 - PARKING AREA
 - RETAIL AREA
 - LANDSCAPING (SOFT) AREA
 - PROPOSED SANITARY SEWER C/W MANHOLE
 - PROPOSED STORM SEWER C/W MANHOLE
 - PROPOSED STORM DRAINAGE AREA
 - DRAINAGE AREA
AREA-ID
RUN-OFF COEFFICIENT

NOTE:
 THE POSITION OF ALL POLE LINES, CONDUITS, WATERMANS, SEWERS AND OTHER UNDERGROUND AND OVERGROUND UTILITIES AND STRUCTURES IS NOT NECESSARILY SHOWN ON THE CONTRACT DRAWINGS, AND WHERE SHOWN, THE ACCURACY OF THE POSITION OF SUCH UTILITIES AND STRUCTURES IS NOT GUARANTEED. BEFORE STARTING WORK, DETERMINE THE EXACT LOCATION OF ALL SUCH UTILITIES AND STRUCTURES AND ASSUME ALL LIABILITY FOR DAMAGE TO THEM.

Owner:
 March + Main Developments Inc. and
 591-595 March Road Development Inc.
 Daniel Byrne
 109 Atlantic Avenue, Unit 302B
 Toronto, ON
 M6K 1X4
 (416) 530-2438

No.	REVISION	DATE	BY
2.	ISSUED FOR DRAFT SUBMISSION	DEC 15/23	FST
1.	ISSUED FOR CITY APPROVAL	NOV 11/22	FST



DESIGN		FOR REVIEW ONLY	
CHECKED	FST/DMM		
DRAWN	FST		
CHECKED	DMM		
APPROVED	FST		

NOVATECH
 Engineers, Planners & Landscape Architects
 Suite 200, 240 Michael Cowpland Drive
 Ottawa, Ontario, Canada K2M 1P6
 Telephone (613) 254-9643
 Facsimile (613) 254-5667
 Website www.novatech-eng.com

LOCATION
 CITY OF OTTAWA
 555, 591, 595 & 603 MARCH ROAD

DRAWING NAME
**CONCEPTUAL
 POST-DEVELOPMENT STORM
 DRAINAGE AREA PLAN**

PROJECT No.	122126
REV # 2	
DRAWING No.	C-4

I:\2023\122126\CAD\overlays\ad\ad\ad\122126-Report Drawings.dwg, CPDST, Nov 10, 2022, 11:36am, dmartha