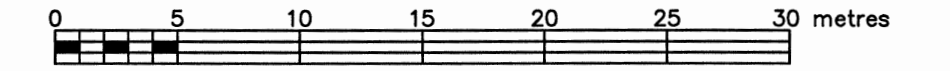


PART OF LOT 11 REGISTERED PLAN 404 CITY OF OTTAWA

FARLEY, SMITH & DENIS SURVEYING LTD. 2022

Scale 1: 300



Metric Note

Distances on this plan are in metres and can be converted to feet by dividing by 0.3048.

Distance Note

Distances shown on this plan are ground distances and can be converted to grid distances by multiplying by the combined scale factor of 0.99994.

Bearing Note

Bearings hereon are grid bearings derived from the CAN-Net Real Time Network and are referred to the Central Meridian of MTM Zone 9 (76°30' West Longitude) Nad-83 (Original).

For bearing comparisons, a rotation of 0°06'40" counter-clockwise was applied to bearings on P3.

For bearing comparisons, a rotation of 0°28'50" clockwise was applied to bearings on P4.

Elevation Notes

- 1. Elevations shown are geodetic and are referred to Geodetic Datum CGVD-1928 1978. (Monument No. 19680092)
2. It is the responsibility of the user of this information to verify that the job benchmark has not been altered or disturbed and that its relative elevation and description agrees with the information shown on this drawing.

Utility Notes

- 1. This drawing cannot be accepted as acknowledging all of the utilities and it will be the responsibility of the user to contact the respective utility authorities for confirmation.
2. Only visible surface utilities were located.
3. Underground utility data derived from City of Ottawa utility sheet reference: O-07-04, O-07-05, 2506p&p22, 2506p&p23, 11146NEp&p1 & 11684p&p2.
4. Sanitary and storm sewer grades and inverts were compiled from: City of Ottawa underground plans.
5. A field location of underground plant by the pertinent utility authority is mandatory before any work involving breaking ground, probing, excavating etc.

Note

All ties to water's edge are at right angle to the traverse line unless otherwise noted.

Notes & Legend

Table with 2 columns: Denotes and Description. Includes symbols for Survey Monument Planted, Standard Iron Bar, Short Standard Iron Bar, Round Iron Bar, Origin Unknown, Witness, Measured, Registered Plan 404, Plan by (1692) dated December 10, 2020, Plan by (AGG) dated November 16, 1981, Plan by (1697) dated October 3, 2008, Maintenance Hole (Storm), Maintenance Hole (Sanitary), Valve Chamber (Watermain), Undergound Storm Sewer, Undergound Sanitary Sewer, Undergound Gas, Undergound Cable, Overhead Wires, Utility Pole, Anchor, Light Standard, Catch Basin, Corrugated Steel Pipe, Fire Hydrant, Water Valve, Gas Meter, Bell Terminal Box, Cable Terminal Box, Bollard, Air Conditioner, Diameter, Board Fence, Plastic Vinyl Fence, Stone Retaining Wall, Concrete Retaining Wall, Timber Retaining Wall, Invert, Top of Grate, Top of Pipe, Underside of Eave, Top of Foundation, Centreline, Top of Slope, Bottom of Slope, Location of Elevations, Top of Retaining Wall Elevation, Property Line, Deciduous Tree, Coniferous Tree.

Site Area=±4600.4 sq.m.

Surveyor's Certificate

- 1. This survey and plan are correct and in accordance with the Surveys Act, the Surveys Act and the Regulations made under them.
2. The survey was completed on the 20th day of June, 2022.

Date: July 11/22 Date: [Signature] Jamie Leslie Ontario Land Surveyor

This plan of survey relates to AOLS Plan Submission Form Number V-28510 FARLEY, SMITH & DENIS SURVEYING LTD.

ONTARIO LAND SURVEYORS CANADA LAND SURVEYORS Unit 275, 30 COLONNADE ROAD, OTTAWA, ONTARIO K2E 7J6 TEL: (613) 727-8226 E-mail: fdsurveys@bellnet.ca

Revision Note:

Revised plan to show additional trees.

Nov 24/22 Date: [Signature] Jamie Leslie Ontario Land Surveyor

WARNING NO PERSON MAY COPY, REPRODUCE, DISTRIBUTE OR ALTER THIS PLAN IN WHOLE OR IN PART WITHOUT THE WRITTEN PERMISSION OF FARLEY, SMITH & DENIS SURVEYING LTD. © FARLEY, SMITH & DENIS SURVEYING LTD., 2022.

FILE No.: 315-22