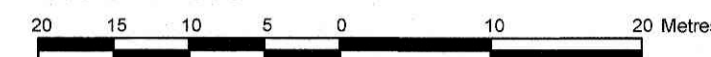


**LOTS 111A, 124, 125, 126, 127, 128, 135
AND PART OF LOTS 112, 141
REGISTERED PLAN 218
CITY OF OTTAWA**
Surveyed by Annis, O'Sullivan, Vollebakk Ltd.

Scale 1 : 500



Metric

DISTANCES SHOWN ON THIS PLAN ARE IN METRES AND CAN BE CONVERTED TO FEET BY DIVIDING BY 0.3048

Surveyor's Certificate

I CERTIFY THAT:

- This survey and plan are correct and in accordance with the Surveys Act and the Surveyors Act and the regulations made under them.
- The survey was completed on the 30th day of January, 2023.

March 17, 2023
Date

J. Cody Anderson
J. Cody Anderson
Ontario Land Surveyor

Notes & Legend

Symbol	Denotes
□	Survey Monument Planted
■	Survey Monument Found
SIB	Standard Iron Bar
SSIB	Short Standard Iron Bar
IB	Iron Bar
CC	Cut Cross
(WIT)	Witness
Meas.	Measured
(AOG)	Annis, O'Sullivan, Vollebakk Ltd.
(P1)	Registered Plan 218
(P2)	Plan 5R-10968
(P3)	(857) Plan dated April 12, 2012
(P4)	(725) Plan dated September 30, 1992
(P5)	Plan 4R-10036
(P6)	(SG) Plan dated November 26, 2020
(P7)	Plan 5R-2722
(P8)	Plan 4R-9851
OHW	Overhead Wires
UP	Utility Pole
TB-C	Cable Terminal Box
B	Bollard
M-W	Monitoring Well

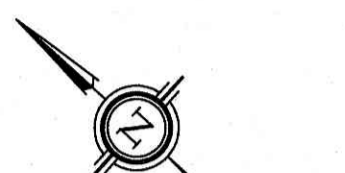
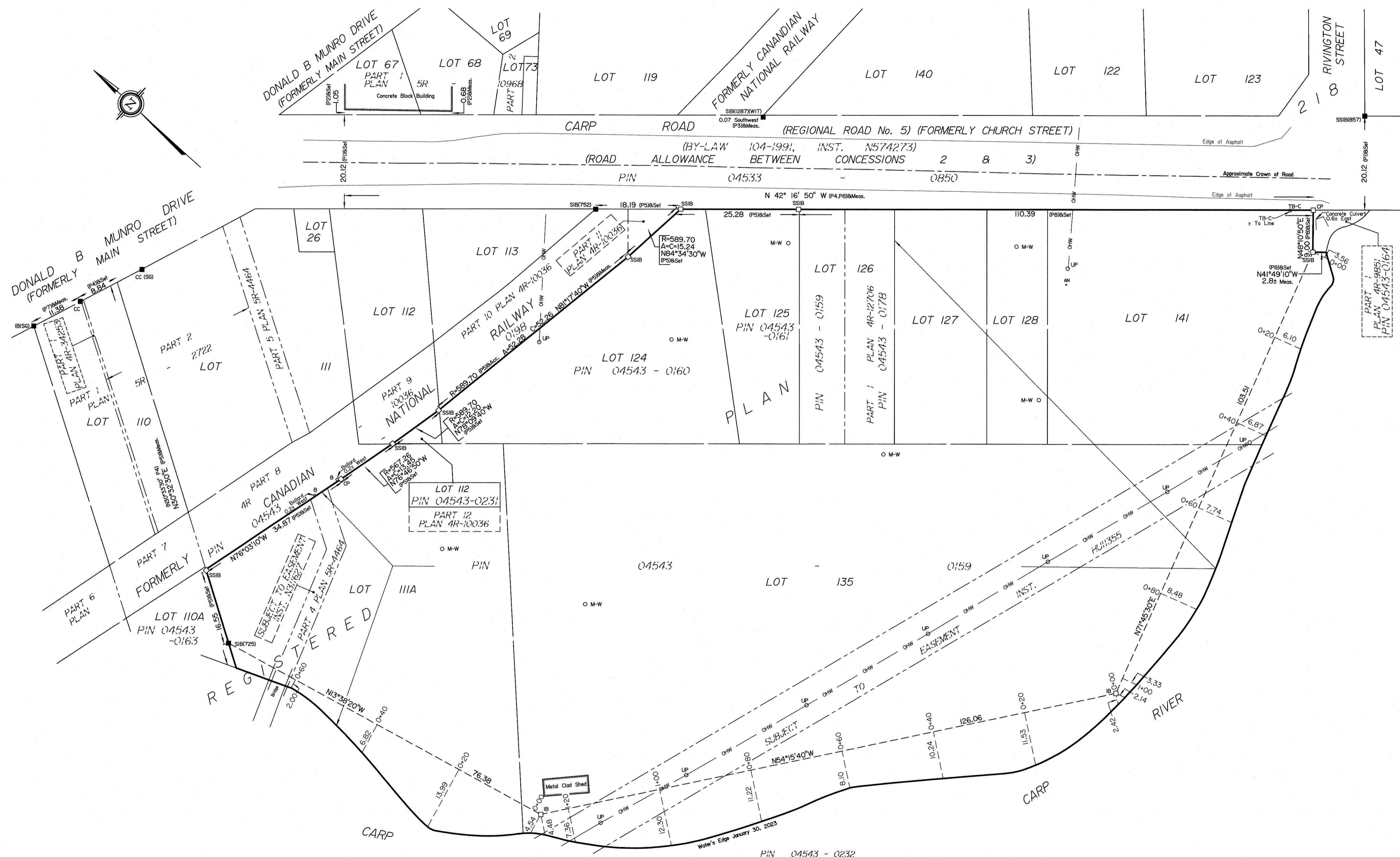
Bearings are grid, derived from Can-Net 2016 Real Time Network GPS observations, referenced to Specified Control Points 01919680037 and 01919791051, MTM Zone 9 (76°30' West Longitude) NAD-83 (original).

For bearing comparisons, a rotation of 0°36'20" clockwise was applied to bearings on plan P4; a rotation of 0°01'50" counter-clockwise was applied to bearings on plan P5; a rotation of 0°01'00" counter-clockwise was applied to bearings on plan P8.

ASSOCIATION OF ONTARIO
LAND SURVEYORS
PLAN SUBMISSION FORM
V-44971



THIS PLAN IS NOT VALID UNLESS
IT IS AN EMBOSSED ORIGINAL
COPY ISSUED BY THE SURVEYOR
in accordance with
Regulation 1026, Section 29 (3).



V:\2023\218-23_Krsr_Plan of Survey\PLAN OF SURVEY\111A,126-128,135,141P1218-1untley 0 F2.dwg
 2023/01/30 10:35:33, G:\Krsr, P:\Plan of Survey\111A,126-128,135,141P1218-1untley 0 F2.dwg