



URBAN FORESTRY & FOREST MANAGEMENT CONSULTING

P.O. Box 13593, OTTAWA, ON K2K 1X6

TELEPHONE: (613) 838-5717

WEBSITE: WWW.IFSASSOCIATES.CA

December 2, 2022

Marietta Ruhland
RUHLAND & ASSOCIATES LTD.
Suite 200 - 1750 Courtwood Crescent
Ottawa, ON
K2C 2B5

RE: TREE CONSERVATION REPORT – CITIGATE (PART OF LOT 17 & 19, CONCESSION 4 (RIDEAU FRONT))

This Tree Conservation Report (TCR) was prepared by IFS Associates Inc. (IFS) on behalf of Colonnade BridgePort in support of their proposed development of Part of Lot 17 & 19, Concession 4 (Rideau Front) in Ottawa.

The need for this report is related to trees protected under the City of Ottawa’s Tree Protection By-law (By-law No. 2020-340). The By-law reflects Section 4.8.2. of the City of Ottawa’s Official Plan which calls for the retention of the City’s urban forestry canopy and, in particular, large healthy trees.

Under the Tree Protection By-law a TCR is required for all plans of subdivision, site plan control applications, common elements condominium applications, and vacant land condominium applications where there is a tree of 10 cm in diameter at breast height (DBH) or greater on a site and/or if there is a tree on an adjacent site that has a critical root zone (CRZ) extending onto a development site. Trees of any size on adjacent City lands must also be documented in a TCR. A “tree” is defined in the By-law as any species of woody perennial plant, including its root system, which has reached or can reach a minimum height of at least 450 cm at physiological maturity. The CRZ is calculated as DBH x 10 cm.

METHODOLOGY

The inventory of trees was conducted by systematically traveling through the work areas and taking note of any tree which had a DBH of 10cm or greater. In heavily forested area where individual tree counts were not feasible, 0.5ha sample plots were established in each different forest community (or ‘stand’). Within the plots a tree count by size category and species was conducted along with general notes about the stand. Trees were placed in one of the following size categories: 10-20, 21-30, 31-40, 41-50, >50cm. Sample plots are representative of the community’s overall forest composition.

The tree inventory was restricted to within the development parcels while the area surveyed for butternut (*Juglans cinerea*) also considered a 50m buffer around the development parcels (Figure 1).

Butternut is listed as an endangered species on the Species at Risk in Ontario List and, as such, it is protected under the Endangered Species Act (ESA) from being killed, harmed, or removed.

RESULTS

The area searched is shown on Figure 1. A summary of individual trees over 10cm in DBH is available in Table 4. Importantly, no butternut trees were observed on or within 50m of the development lands.

A summary of the tree count by size category within the forest plots is available in Table 1 and percent species composition in Table 2. These plots are representative of the forest communities and further data can be extrapolated.

Table 1: Tree count by size category within the forest plots

Size Category (DBH)	PLOT 1	PLOT 2	PLOT 3
	FOC 1	FOC 2	FOD
10-20cm	5	13	7
21-30cm	18	4	0
31-40cm	7	0	0
41-50cm	1	0	1
>50cm	0	0	5

Table 2: Percent species composition within the forest plots

SPECIES	PLOT 1	PLOT 2	PLOT 3
	FOC 1	FOC 2	FOD
White Cedar	87%	100%	0%
Yellow Birch	10%	0%	0%
Sugar Maple	3%	0%	46%
American Elm	0%	0%	39%
Bitternut Hickory	0%	0%	15%

There were two coniferous forest communities (FOC). The first (FOC 1) was dominated by white cedar (*Thuja occidentalis*), with the occasional yellow birch (*Betula alleghaniensis*), and sugar maple (*Acer saccharum*). Other species noted within this community include black maple (*Prunus serotina*). The second (FOC 2) consisted solely of white cedar. The deciduous forest was dominated by sugar maples, followed by American elm (*Ulmus americana*) and bitternut hickory (*Carya cordiformis*). Black cherry was also observed within this community. Table 3 is a breakdown of the sizes of each forested community within each development block.

Table 3: Sizes of each forested community within each development block

BLOCK #	SIZE OF BLOCK (ha)	FOC 1	FOC 2	FOD
1	3.93	0.7	0	0
2	5.03	0.72	0	0.1
3	3.18	0.14	1.36	1.36
4	4.22	3.75	0.02	0.45
5	2.95	0.73	0.15	0
6	6.05	0	0	0

FEDERAL AND PROVINCIAL REGULATIONS

Federal and provincial regulations can be applicable to trees on private property. In particular, the following two regulations have been considered for this property:

- 1) Endangered Species Act (2007): No butternuts (*Juglans cinerea*) were identified on the subject or adjacent properties. This species of tree is listed as threatened under the Province of Ontario's Endangered Species Act (2007) and so is protected from harm.
- 2) Migratory Bird Convention Act (1994): In the period between April and August of each year nest surveys are required to be performed by a suitably trained person no more than five (5) days before trees or other similar nesting habitat are to be removed.

TREE PRESERVATION

Proposed tree preservation, as based on development setbacks, is shown on a parcel by-parcel basis on the accompanying plans L-02 through L-07 prepared by Ruhland & Associates. These plans, and therefore the exact extent of tree preservation, will be subject to final site and grading plans.

TREE PRESERVATION MEASURES

Where excavation occurs within the CRZs of trees, the following measures will be taken:

1. Hydro excavation along the edge of excavation in proximity to the tree to carefully expose roots. Exposed roots will then be cleanly cut and sealed before being reburied. Excavation can then resume using traditional mechanical means. Sealing the cleanly cut root ends with a beeswax product will help prevent the loss of moisture and facilitate healing.
2. If the excavation is to be left open for any time a covering of at least three layers of moistened burlap is to be draped over the exposed face of excavation closet to the tree. This will help reduce the loss of soil moisture (as soil dries the roots contained within die).

TREE PROTECTION MEASURES

Protection measures intended to mitigate damage during construction will be applied for the trees to be retained. The following measures are the minimum required by the City of Ottawa to ensure tree survival during and following construction:

1. As per the City of Ottawa's tree protection barrier specification, erect a fence as close as possible to the CRZ of the tree(s).
2. Do not place any material or equipment within the CRZ of the tree(s).
3. Do not attach any signs, notices or posters to any tree.
4. Do not raise or lower the existing grade within the CRZ without approval.
5. Tunnel or bore instead of trenching within the CRZ of any tree.
6. Do not damage the root system, trunk or branches of any tree.
7. Ensure that exhaust fumes from all equipment are NOT directed towards any tree's canopy.

Please do not hesitate to contact me with any questions concerning this report.

This report is subject to the attached Limitations of Tree Assessments and Liability to which the reader's attention is directed.

Yours,



Andrew K. Boyd, B.Sc.F, R.P.F. (#1828)
Certified Arborist #ON-0496A and TRAQualified
Consulting Urban Forester

TABLE 4: TREE LOCATIONS

ID	BLOCK #	UTM NAD83	SPECIES	DBH (cm)										AVERAGE DBH (cm)	COMMENTS	HEALTH	
1	2	18 T 438438 5012720	White Ash	20											20	Single Stem	Good
2	2	18 T 438445 5012731	White Ash	25	18	32									25	Multistem	Poor
3	2	18 T 438452 5012733	American Elm	30											30	Single Stem	Dead
4	2	18 T 438467 5012740	American Elm	24	16	11	13								16	Multistem	Dead
5	1	18 T 438479 5012758	White Ash	13											13	Single Stem	Poor
6	1	18 T 438491 5012768	American Elm	30											30	Single Stem	Dead
7	1	18 T 438496 5012768	White Ash	16											16	Single Stem	Good
8	1	18 T 438501 5012771	American Elm	26											26	Single Stem	Dead
9	1	18 T 438505 5012774	American Elm	37											37	Single Stem	Dead
10	1	18 T 438505 5012774	American Elm	17											17	Single Stem	Dead
11	1	18 T 438518 5012779	American Elm	15											15	Single Stem	Good
12	1	18 T 438521 5012779	American Elm	29											29	Single Stem	Dead
13	1	18 T 438521 5012779	American Elm	31											31	Single Stem	Dead
14	1	18 T 438520 5012779	American Elm	13											13	Single Stem	Good
15	1	18 T 438526 5012783	American Elm	26											26	Single Stem	Good
16	1	18 T 438534 5012788	American Elm	37	12										24.5	Multistem	Good
17	1	18 T 438545 5012794	Manitoba Maple	34											34	Recently Fallen / Single Stem	Poor
18	1	18 T 438557 5012802	Manitoba Maple	16	15										15.5	Leaning / Multistem	Poor
19	1	18 T 438560 5012802	American Elm	22											22	Single Stem	Good
20	1	18 T 438571 5012810	American Elm	36											36	Single Stem	Good
21	1	18 T 438574 5012812	American Elm	33											33	Single Stem	Good

ID	BLOCK #	UTM NAD83	SPECIES	DBH (cm)										AVERAGE DBH (cm)	COMMENTS	HEALTH	
22	1	18 T 438588 5012821	White Ash	24											24	Single Stem	Good
23	1	18 T 438589 5012821	White Ash	44											44	Single Stem	Good
24	1	18 T 438596 5012826	Manitoba Maple	24	24										24	Multistem	Good
25	1	18 T 438603 5012827	Manitoba Maple	23											23	Leaning / Multistem	Good
26	1	18 T 438603 5012824	Manitoba Maple	25											25	Single Stem	Good
27	1	18 T 438603 5012827	Manitoba Maple	27	20										23.5	Multistem	Good
28	1	18 T 438606 5012829	Manitoba Maple	50											50	Single Stem	Good
29	1	18 T 438605 5012831	Manitoba Maple	39											39	Single Stem	Good
30	1	18 T 438610 5012835	Manitoba Maple	27											27	Single Stem	Good
31	1	18 T 438623 5012841	Manitoba Maple	30	32										31	Multistem	Good
32	1	18 T 438625 5012841	Manitoba Maple	38											38	Single Stem	Good
33	1	18 T 438626 5012840	Manitoba Maple	20	19	16									18.3333	Multistem	Good
34	1	18 T 438625 5012838	Manitoba Maple	33	25	21									26.3333	Multistem	Good
35	1	18 T 438627 5012840	Manitoba Maple	10	35										22.5	Multistem	Good
36	1	18 T 438628 5012844	Manitoba Maple	20	25	13	12								17.5	Multistem	Good
37	1	18 T 438633 5012847	Manitoba Maple	30	13	15	19	15	15						17.8333	Multistem	Good
38	1	18 T 438635 5012846	Manitoba Maple	14											14	Leaning / Single Stem	Good
39	1	18 T 438633 5012846	Manitoba Maple	12											12	Single Stem	Good
40	1	18 T 438634 5012847	Manitoba Maple	21	30	10	16								19.25	Multistem	Good
41	1	18 T 438636 5012846	Manitoba Maple	19											19	Single Stem	Good
42	1	18 T 438635 5012847	Manitoba Maple	15	14										14.5	Multistem	Good
43	1	18 T 438636 5012847	Manitoba Maple	10	19										14.5	Multistem	Good

ID	BLOCK #	UTM NAD83	SPECIES	DBH (cm)										AVERAGE DBH (cm)	COMMENTS	HEALTH	
44	1	18 T 438638 5012851	Manitoba Maple	20											20	Single Stem	Good
45	1	18 T 438640 5012850	Manitoba Maple	15											15	Single Stem	Good
46	1	18 T 438641 5012850	Manitoba Maple	14	13										13.5	Multistem	Good
47	1	18 T 438640 5012850	Manitoba Maple	25											25	Single Stem	Good
48	1	18 T 438642 5012848	Manitoba Maple	46											46	Single Stem	Good
49	1	18 T 438642 5012848	Manitoba Maple	19											19	Single Stem	Good
50	1	18 T 438644 5012846	Manitoba Maple	26	22										24	Multistem	Good
51	1	18 T 438644 5012848	Manitoba Maple	44											44	Single Stem	Good
52	1	18 T 438627 5012899	American Elm	10	10	10	11	11	12	10	10				10.5	Multistem	Good
53	1	18 T 438595 5012981	American Elm	10											10	Single Stem	Good
54	1	18 T 438558 5012965	Manitoba Maple	26	27										26.5	Multistem	Good
55	1	18 T 438551 5012963	Manitoba Maple	19	17	22	10	11							15.8	Stem with DBH of 11 was dead / Multistem	Good
56	1	18 T 438546 5012959	American Elm	13											13	Single Stem	Good
57	1	18 T 438529 5012949	Manitoba Maple	18											18	Single Stem	Good
58	1	18 T 438516 5012942	Manitoba Maple	20	18	17	19								18.5	Multistem	Good
59	1	18 T 438511 5012939	Black Cherry	18											18	Single Stem	Poor
60	1	18 T 438506 5012937	Manitoba Maple	35											35	Single Stem	Good
61	1	18 T 438500 5012933	Manitoba Maple	10	7										8.5	Multistem	Good
62	1	18 T 438475 5012920	Manitoba Maple	10											10	Single Stem	Good
63	1	18 T 438472 5012917	American Elm	23											23	Single Stem	Good
64	1	18 T 438454 5012906	Manitoba Maple	13											13	Single Stem	Good
65	1	18 T 438448 5012898	Red Maple	16											16	Single Stem	Good

ID	BLOCK #	UTM NAD83	SPECIES	DBH (cm)										AVERAGE DBH (cm)	COMMENTS	HEALTH	
66	1	18 T 438435 5012897	White Ash	17											17	Bark falling off / Single Stem	Poor
67	1	18 T 438434 5012897	Manitoba Maple	24											24	Single Stem	Good
68	1	18 T 438427 5012892	Manitoba Maple	11											11	Single Stem	Good
69	1	18 T 438427 5012892	Manitoba Maple	14											14	Single Stem	Good
70	1	18 T 438426 5012890	Manitoba Maple	10											10	Single Stem	Good
71	1	18 T 438424 5012889	American Elm	15											15	Single Stem	Good
72	1	18 T 438422 5012887	Manitoba Maple	11											11	Single Stem	Good
73	1	18 T 438417 5012887	Manitoba Maple	24											24	Single Stem	Dead
74	1	18 T 438417 5012884	Manitoba Maple	11											11	Single Stem	Good
75	1	18 T 438418 5012885	Manitoba Maple	13											13	Single Stem	Good
76	1	18 T 438418 5012884	White Ash	13											13	Single Stem	Good
77	1	18 T 438414 5012881	Manitoba Maple	12											12	Single Stem	Good
78	1	18 T 438411 5012880	Manitoba Maple	13											13	Single Stem	Good
79	1	18 T 438413 5012880	Manitoba Maple	12											12	Single Stem	Good
80	1	18 T 438412 5012880	Manitoba Maple	11											11	Single Stem	Good
81	1	18 T 438435 5012890	Manitoba Maple	19	15										17	Multistem	Good
82	1	18 T 438436 5012889	Manitoba Maple	20	21										20.5	Multistem	Good
83	1	18 T 438440 5012882	Manitoba Maple	12											12	Single Stem	Good
84	1	18 T 438442 5012883	Manitoba Maple	12											12	Single Stem	Good
85	1	18 T 438445 5012872	Manitoba Maple	11											11	Single Stem	Good
86	1	18 T 438447 5012869	Manitoba Maple	10											10	Single Stem	Good
87	1	18 T 438454 5012850	White Ash	29	13	16	10								17	Multistem	Good

ID	BLOCK #	UTM NAD83	SPECIES	DBH (cm)										AVERAGE DBH (cm)	COMMENTS	HEALTH	
88	1	18 T 438455 5012847	White Ash	16											16	Multistem	Good
89	1	18 T 438455 5012845	American Elm	15											15	Multistem	Good
90	1	18 T 438457 5012845	American Elm	17											17	Multistem	Good
91	1	18 T 438457 5012845	American Elm	10											10	Multistem	Good
92	1	18 T 438462 5012828	White Ash	13											13	Multistem	Good
93	1	18 T 438463 5012822	American Elm	13											13	Multistem	Good
94	1	18 T 438464 5012821	American Elm	16											16	Multistem	Good
95	1	18 T 438465 5012821	American Elm	20											20	Multistem	Good
96	1	18 T 438465 5012820	American Elm	12											12	Multistem	Good
97	1	18 T 438466 5012819	American Elm	18											18	Multistem	Good
98	1	18 T 438466 5012819	Red Maple	18											18	Multistem	Good
99	1	18 T 438468 5012812	American Elm	10											10	Multistem	Good
100	1	18 T 438469 5012810	White Ash	21											21	Multistem	Dead
101	1	18 T 438471 5012808	American Elm	27											27	Multistem	Good
102	1	18 T 438471 5012810	American Elm	16											16	Multistem	Good
103	1	18 T 438472 5012807	White Ash	13	17										15	Stem with DBH of 17 was dead / Multistem	Poor
104	1	18 T 438473 5012805	American Elm	13											13	Single Stem	Good
105	1	18 T 438475 5012802	American Elm	15											15	Single Stem	Good
106	1	18 T 438476 5012797	American Elm	15	14										14.5	Multistem	Dead
107	1	18 T 438478 5012793	American Elm	15	13	9									12.3333	Multistem	Good
108	1	18 T 438482 5012791	American Elm	14											14	Single Stem	Good
109	1	18 T 438481 5012791	American Elm	16											16	Single Stem	Good

ID	BLOCK #	UTM NAD83	SPECIES	DBH (cm)												AVERAGE DBH (cm)	COMMENTS	HEALTH
110	1	18 T 438483 5012790	American Elm	14											14	Single Stem	Good	
111	1	18 T 438482 5012787	American Elm	21											21	Single Stem	Good	
112	1	18 T 438482 5012787	American Elm	10											10	Single Stem	Good	
113	1	18 T 438483 5012784	American Elm	10											10	Single Stem	Dead	
114	1	18 T 438482 5012784	American Elm	16											16	Single Stem	Good	
115	1	18 T 438482 5012785	American Elm	10											10	Single Stem	Good	
116	1	18 T 438482 5012783	American Elm	20	9										14.5	Multistem	Good	
117	1	18 T 438482 5012779	American Elm	11											11	Single Stem	Good	
118	1	18 T 438482 5012780	Manitoba Maple	18											18	Part of tree broken in the middle / Single Stem	Poor	
119	1	18 T 438483 5012776	American Elm	18											18	Single Stem	Good	
120	1	18 T 438484 5012779	American Elm	10											10	Single Stem	Good	
121	1	18 T 438484 5012779	American Elm	12											12	Single Stem	Good	
122	1	18 T 438483 5012778	American Elm	10											10	Single Stem	Good	
123	1	18 T 438483 5012778	American Elm	10											10	Single Stem	Good	
124	1	18 T 438535 5012686	Manitoba Maple	12	36										24	Multistem	Good	
125	2	18 T 438570 5012628	Manitoba Maple	34	12	14									20	Multistem	Good	
126	2	18 T 438656 5012670	Eastern Cottonwood	14											14	Single Stem	Good	
127	2	18 T 438680 5012724	Manitoba Maple	11	12	9	14	13	10	10	11	12		11.3333	Multistem	Good		
128	2	18 T 438678 5012735	Manitoba Maple	10											10	Single Stem	Good	
129	2	18 T 438649 5012822	Manitoba Maple	25	27										26	Multistem	Good	
130	2	18 T 438539 5012613	American Elm	42											42	Single Stem	Dead	
131	2	18 T 438527 5012606	Black Cherry	14											14	Single Stem	Good	

ID	BLOCK #	UTM NAD83	SPECIES	DBH (cm)										AVERAGE DBH (cm)	COMMENTS	HEALTH	
132	2	18 T 438530 5012605	American Elm	17											17	Single Stem	Dead
133	2	18 T 438529 5012605	Manitoba Maple	44	30										37	Multistem	Good
134	2	18 T 438506 5012595	American Elm	40											40	Single Stem	Dead
135	2	18 T 438504 5012593	American Elm	25											25	Single Stem	Dead
136	2	18 T 438499 5012590	American Elm	22											22	Single Stem	Dead
137	2	18 T 438498 5012590	American Elm	12											12	Single Stem	Good
138	6	18 T 438383 5012247	American Elm	19											19	Single Stem	Dead
139	6	18 T 438380 5012252	American Elm	18											18	Single Stem	Dead
140	6	18 T 438377 5012253	American Elm	20											20	Single Stem	Dead
141	6	18 T 438376 5012253	American Elm	27											27	Single Stem	Poor
142	6	18 T 438375 5012255	American Elm	10											10	Single Stem	Good
143	6	18 T 438375 5012255	American Elm	12											12	Single Stem	Good
144	6	18 T 438375 5012255	American Elm	15											15	Single Stem	Good
145	6	18 T 438375 5012255	American Elm	14											14	Single Stem	Good
146	6	18 T 438365 5012252	American Elm	13											13	Bark falling off / Single Stem	Poor
147	6	18 T 438365 5012251	American Elm	14											14	Bark falling off / Single Stem	Poor
148	6	18 T 438362 5012251	American Elm	16											16	Single Stem	Good
149	6	18 T 438361 5012252	American Elm	10											10	Single Stem	Good
150	6	18 T 438361 5012253	American Elm	13											13	Single Stem	Good
151	6	18 T 438355 5012248	American Elm	15											15	Single Stem	Good
152	6	18 T 438355 5012249	American Elm	14											14	Single Stem	Good
153	6	18 T 438354 5012249	American Elm	14											14	Single Stem	Dead

ID	BLOCK #	UTM NAD83	SPECIES	DBH (cm)										AVERAGE DBH (cm)	COMMENTS	HEALTH	
154	6	18 T 438352 5012249	Black Cherry	15											15	Single Stem	Good
155	6	18 T 438345 5012245	American Elm	17											17	Single Stem	Good
156	6	18 T 438343 5012244	American Elm	16											16	Single Stem	Good
157	6	18 T 438336 5012239	American Elm	14											14	Single Stem	Good
158	6	18 T 438291 5012229	Black Cherry	14											14	Single Stem	Good
159	6	18 T 438259 5012211	Black Cherry	20											20	Single Stem	Good
160	6	18 T 438246 5012195	American Elm	16											16	Single Stem	Good
161	6	18 T 438227 5012192	Trembling Aspen	10											10	Single Stem	Good
162	6	18 T 438227 5012191	American Elm	13											13	Single Stem	Good
163	6	18 T 438227 5012190	Trembling Aspen	20	19										19.5	Multistem	Good
164	6	18 T 438217 5012193	Trembling Aspen	10	23										16.5	Multistem	Good
165	6	18 T 438218 5012192	Trembling Aspen	18											18	Single Stem	Good
166	6	18 T 438218 5012189	American Elm	10	10										10	Multistem	Good
167	6	18 T 438219 5012189	Manitoba Maple	15											15	Single Stem	Poor
168	6	18 T 438228 5012184	Manitoba Maple	21	18										19.5	Multistem	Good
169	6	18 T 438245 5012142	White Ash	20											20	Single Stem	Good
170	6	18 T 438262 5012144	Scots Pine	32	26										29	Multistem	Good
171	6	18 T 438281 5012158	White Ash	14	12										13	Multistem	Good
172	6	18 T 438282 5012161	White Ash	13											13	Single Stem	Good
173	6	18 T 438280 5012170	American Elm	14											14	Single Stem	Good
174	6	18 T 438303 5012164	White Ash	20											20	Single Stem	Good
175	6	18 T 438334 5012137	White Ash	25											25	Single Stem	Good

ID	BLOCK #	UTM NAD83	SPECIES	DBH (cm)										AVERAGE DBH (cm)	COMMENTS	HEALTH	
176	6	18 T 438271 5012088	American Elm	14											14	Single Stem	Good
177	6	18 T 438272 5012090	American Elm	16											16	Single Stem	Good
178	6	18 T 438277 5012093	American Elm	17											17	Single Stem	Good
179	6	18 T 438280 5012095	Manitoba Maple	60	21										40.5	Multistem	Good
180	6	18 T 438284 5012099	American Elm	12											12	Single Stem	Good
181	6	18 T 438290 5012105	American Elm	16											16	Single Stem	Dead
182	6	18 T 438294 5012104	American Elm	15											15	Single Stem	Dead
183	6	18 T 438294 5012104	American Elm	14											14	Single Stem	Dead
184	6	18 T 438297 5012105	American Elm	26											26	Single Stem	Dead
185	6	18 T 438297 5012104	American Elm	37											37	Single Stem	Dead
186	6	18 T 438302 5012108	White Ash	16											16	Single Stem	Good
187	6	18 T 438306 5012111	American Elm	15											15	Leaning / Single Stem	Dead
188	6	18 T 438308 5012110	American Elm	14											14	Single Stem	Dead
189	6	18 T 438307 5012112	American Elm	12											12	Single Stem	Good
190	6	18 T 438309 5012112	American Elm	11											11	Single Stem	Good
191	6	18 T 438309 5012111	American Elm	35	12										23.5	Multistem	Dead
192	6	18 T 438315 5012114	Manitoba Maple	15	14										14.5	Multistem	Good
193	6	18 T 438316 5012117	Manitoba Maple	15											15	Single Stem	Good
194	6	18 T 438319 5012117	Black Cherry	21											21	Leaning / Single Stem	Good
195	6	18 T 438325 5012119	American Elm	27											27	Single Stem	Good
196	6	18 T 438325 5012121	Black Cherry	13											13	Single Stem	Good
197	6	18 T 438331 5012123	American Elm	14											14	Single Stem	Good

ID	BLOCK #	UTM NAD83	SPECIES	DBH (cm)										AVERAGE DBH (cm)	COMMENTS	HEALTH	
198	6	18 T 438330 5012123	American Elm	10											10	Single Stem	Good
199	6	18 T 438332 5012124	Manitoba Maple	30											30	Single Stem	Good
200	6	18 T 438339 5012128	Black Cherry	20											20	Single Stem	Good
201	6	18 T 438340 5012129	Black Cherry	21											21	Single Stem	Good
202	6	18 T 438341 5012129	Black Cherry	18											18	Single Stem	Good
203	6	18 T 438341 5012130	American Elm	27											27	Single Stem	Good
204	6	18 T 438349 5012133	Black Cherry	11											11	Single Stem	Good
205	6	18 T 438353 5012135	Black Cherry	25											25	Single Stem	Good
206	6	18 T 438355 5012137	American Elm	12											12	Single Stem	Good
207	6	18 T 438355 5012137	American Elm	35											35	Single Stem	Dead
208	6	18 T 438363 5012141	American Elm	33											33	Single Stem	Good
209	6	18 T 438368 5012143	American Elm	10											10	Single Stem	Good
210	6	18 T 438367 5012144	Black Cherry	10											10	Single Stem	Good
211	6	18 T 438370 5012144	American Elm	28											28	Single Stem	Dead
212	6	18 T 438371 5012146	Bitternut Hickory	21	17										19	Multistem	Good
213	6	18 T 438375 5012148	Bitternut Hickory	27											27	Single Stem	Good
214	6	18 T 438393 5012159	American Elm	14											14	Single Stem	Dead
215	6	18 T 438393 5012160	American Elm	10	13	14									12.3333	Multistem	Dead
216	6	18 T 438399 5012162	Black Cherry	25	21	30	24	26							25.2	Multistem	Dead
217	6	18 T 438407 5012165	Black Cherry	20	24										22	Multistem	Dead
218	6	18 T 438410 5012165	Black Cherry	35	37										36	Multistem	Dead
219	6	18 T 438415 5012166	Bitternut Hickory	23											23	Single Stem	Good

ID	BLOCK #	UTM NAD83	SPECIES	DBH (cm)										AVERAGE DBH (cm)	COMMENTS	HEALTH	
220	6	18 T 438415 5012162	Manitoba Maple	39											39	Bark falling off / Single Stem	Poor
221	6	18 T 438419 5012156	Black Cherry	27	32	26									28.3333	Multistem	Dead
222	6	18 T 438422 5012146	Black Cherry	23	33	25									27	Multistem	Good
223	6	18 T 438426 5012137	Manitoba Maple	24	19										21.5	Multistem	Good
224	6	18 T 438427 5012138	White Ash	10											10	Single Stem	Good
225	6	18 T 438429 5012133	Manitoba Maple	20											20	Single Stem	Good
226	6	18 T 438431 5012122	Black Cherry	27	25	10									20.6667	Multistem	Good
227	6	18 T 438445 5012087	Red Maple	12	16	10									12.6667	Multistem	Good
228	6	18 T 438446 5012086	Ironwood	15											15	Single Stem	Good
229	6	18 T 438444 5012086	American Elm	15											15	Single Stem	Dead
230	6	18 T 438446 5012086	American Elm	31											31	Single Stem	Dead
231	6	18 T 438446 5012085	Red Maple	70											70	Single Stem	Good
232	6	18 T 438440 5012083	White Ash	37											37	Single Stem	Good
233	6	18 T 438440 5012081	American Elm	10											10	Single Stem	Good
234	6	18 T 438438 5012080	American Elm	17											17	Single Stem	Dead
235	6	18 T 438436 5012077	Red Maple	19											19	Single Stem	Good
236	6	18 T 438436 5012075	American Elm	11											11	Single Stem	Good
237	6	18 T 438432 5012074	Red Maple	21											21	Single Stem	Good
238	6	18 T 438427 5012073	Bitternut Hickory	20											20	Single Stem	Good
239	6	18 T 438429 5012073	Red Maple	26											26	Single Stem	Good
240	6	18 T 438426 5012073	Manitoba Maple	25											25	Single Stem	Good
241	6	18 T 438413 5012069	Trembling Aspen	37											37	Single Stem	Good

ID	BLOCK #	UTM NAD83	SPECIES	DBH (cm)										AVERAGE DBH (cm)	COMMENTS	HEALTH	
242	6	18 T 438414 5012069	Red Maple	21											21	Single Stem	Good
243	6	18 T 438414 5012067	Ironwood	11	13										12	Multistem	Good
244	6	18 T 438414 5012064	Red Maple	42	16	17									25	Multistem	Good
245	6	18 T 438409 5012063	Red Maple	17	10										13.5	Multistem	Good
246	6	18 T 438404 5012060	Red Maple	30											30	Single Stem	Good
247	6	18 T 438402 5012060	Ironwood	16	15	10									13.6667	Multistem	Good
248	6	18 T 438399 5012057	Red Maple	13											13	Single Stem	Good
249	6	18 T 438395 5012056	Red Maple	37											37	Single Stem	Good
250	6	18 T 438395 5012056	Red Maple	35											35	Single Stem	Good
251	6	18 T 438395 5012052	American Elm	33											33	Single Stem	Good
252	6	18 T 438389 5012053	Red Maple	27											27	Single Stem	Good
253	6	18 T 438387 5012051	Ironwood	15	12	10	8								11.25	Multistem	Good
254	6	18 T 438383 5012051	American Elm	23											23	Single Stem	Good
255	6	18 T 438384 5012050	Bitternut Hickory	14											14	Single Stem	Good
256	6	18 T 438383 5012050	Black Cherry	26											26	Single Stem	Good
257	6	18 T 438381 5012047	Red Maple	16											16	Single Stem	Good
258	6	18 T 438379 5012045	Ironwood	15	14	10									13	Multistem	Good
259	6	18 T 438378 5012047	Red Maple	32	20										26	Multistem	Good
260	6	18 T 438376 5012044	Ironwood	17											17	Single Stem	Good
261	6	18 T 438372 5012044	Red Maple	24											24	Single Stem	Good
262	6	18 T 438370 5012042	Ironwood	28											28	Single Stem	Good
263	6	18 T 438367 5012041	Ironwood	15											15	Single Stem	Good

ID	BLOCK #	UTM NAD83	SPECIES	DBH (cm)											AVERAGE DBH (cm)	COMMENTS	HEALTH
264	6	18 T 438365 5012038	Red Maple	31											31	Single Stem	Good
265	6	18 T 438363 5012036	White Ash	11											11	Single Stem	Good
266	6	18 T 438361 5012036	Shagbark Hickory	19											19	Single Stem	Good
267	6	18 T 438361 5012034	Red Maple	30											30	Single Stem	Good
268	6	18 T 438360 5012037	Basswood	30											30	Single Stem	Good
269	6	18 T 438353 5012031	Basswood	28	26	16	10	15							19	Multistem	Good
270	6	18 T 438347 5012029	Basswood	46	14	37									32.3333	Multistem	Good
271	6	18 T 438347 5012028	American Elm	29											29	Single Stem	Good
272	6	18 T 438343 5012028	Sugar Maple	30											30	Single Stem	Good
273	6	18 T 438339 5012026	Basswood	19	12										15.5	Multistem	Good
274	6	18 T 438333 5012022	Basswood	10	16										13	Multistem	Good
275	6	18 T 438331 5012020	White Ash	12											12	Single Stem	Good
276	6	18 T 438328 5012019	American Elm	28											28	Single Stem	Good
277	6	18 T 438328 5012015	American Elm	17	10	27									18	Multistem	Good
278	6	18 T 438325 5012016	Basswood	30	17	22	10	19							19.6	Multistem	Good
279	6	18 T 438324 5012015	Basswood	32	27	20	30	29							27.6	Multistem	Good
280	6	18 T 438325 5012013	Bitternut Hickory	33											33	Single Stem	Good
281	6	18 T 438324 5012013	Red Maple	25											25	Single Stem	Good
282	6	18 T 438326 5012022	Red Maple	35											35	Single Stem	Good
283	6	18 T 438323 5012033	Manitoba Maple	14	13	17	16	11	17	16	16				15	Multistem	Good
284	6	18 T 438318 5012042	Bitternut Hickory	19											19	Single Stem	Good
285	6	18 T 438314 5012052	Manitoba Maple	14	15	10	17	16	19						15.1667	Multistem	Good

ID	BLOCK #	UTM NAD83	SPECIES	DBH (cm)										AVERAGE DBH (cm)	COMMENTS	HEALTH		
286	6	18 T 438305 5012072	Manitoba Maple	35												35	Leaning / Single Stem	Good
287	6	18 T 438462 5012102	American Elm	27												27	Single Stem	Dead
288	6	18 T 438467 5012100	American Elm	10												10	Single Stem	Dead
289	6	18 T 438466 5012098	Red Maple	10												10	Single Stem	Good
290	6	18 T 438469 5012098	American Elm	10												10	Single Stem	Dead
291	6	18 T 438472 5012100	Black Cherry	27												27	Single Stem	Good
292	6	18 T 438476 5012103	American Elm	35												35	Single Stem	Dead
293	6	18 T 438490 5012110	Red Maple	20												20	Single Stem	Good
294	6	18 T 438498 5012112	American Elm	27												27	Single Stem	Dead
295	6	18 T 438501 5012116	Red Maple	17												17	Single Stem	Good
296	6	18 T 438505 5012117	Ironwood	11												11	Single Stem	Good
297	6	18 T 438507 5012119	Red Maple	27												27	Single Stem	Good
298	6	18 T 438508 5012119	Red Maple	17												17	Single Stem	Good
299	6	18 T 438518 5012127	Manitoba Maple	17												17	Single Stem	Good
300	6	18 T 438519 5012128	Bitternut Hickory	11												11	Single Stem	Good
301	6	18 T 438521 5012130	Manitoba Maple	19												19	Single Stem	Good
302	6	18 T 438526 5012129	Manitoba Maple	12												12	Single Stem	Good
303	6	18 T 438530 5012132	Manitoba Maple	13												13	Single Stem	Good
304	6	18 T 438531 5012133	Manitoba Maple	19												19	Single Stem	Good
305	6	18 T 438533 5012137	Manitoba Maple	25												25	Single Stem	Good
306	6	18 T 438534 5012137	Manitoba Maple	16												16	Single Stem	Good
307	6	18 T 438536 5012136	Manitoba Maple	15												15	Single Stem	Good

ID	BLOCK #	UTM NAD83	SPECIES	DBH (cm)										AVERAGE DBH (cm)	COMMENTS	HEALTH		
308	6	18 T 438537 5012136	Manitoba Maple	11												11	Single Stem	Good
309	6	18 T 438539 5012139	Manitoba Maple	24												24	Single Stem	Good
310	6	18 T 438542 5012141	Black Cherry	12												12	Single Stem	Good
311	6	18 T 438546 5012143	Manitoba Maple	10												10	Single Stem	Good
312	5	18 T 438067 5012611	Manitoba Maple	20												20	Single Stem	Good
313	5	18 T 438065 5012621	American Elm	18												18	Single Stem	Good
314	5	18 T 438062 5012622	White Cedar	10	11											10.5	Multistem	Good
315	5	18 T 438056 5012626	Manitoba Maple	20	16											18	Leaning / Multistem	Good
316	5	18 T 438036 5012637	Manitoba Maple	45												45	Single Stem	Good
317	5	18 T 438037 5012635	Manitoba Maple	21												21	Single Stem	Good
318	5	18 T 438027 5012622	Manitoba Maple	25												25	Single Stem	Good
319	5	18 T 438035 5012626	Scots Pine	22												22	Single Stem	Good
320	5	18 T 438040 5012624	Manitoba Maple	18	18	20	19									18.75	Leaning / Multistem	Good
321	5	18 T 438044 5012622	Manitoba Maple	16	19											17.5	Multistem	Good
322	5	18 T 438045 5012619	Manitoba Maple	32												32	Single Stem	Good
323	5	18 T 438037 5012616	Scots Pine	34												34	Single Stem	Good
324	5	18 T 438040 5012613	Scots Pine	16	15											15.5	Multistem	Good
325	5	18 T 438039 5012610	Scots Pine	14	17											15.5	Multistem	Good
326	5	18 T 438039 5012604	Manitoba Maple	24	15	11										16.6667	Multistem	Good
327	5	18 T 438044 5012602	White Spruce	23												23	Single Stem	Good
328	5	18 T 438047 5012608	Manitoba Maple	10	11											10.5	Multistem	Good
329	5	18 T 438051 5012608	Manitoba Maple	24	12	12										16	Multistem	Good

ID	BLOCK #	UTM NAD83	SPECIES	DBH (cm)										AVERAGE DBH (cm)	COMMENTS	HEALTH	
330	5	18 T 438052 5012608	Manitoba Maple	20	16										18	Multistem	Good
331	5	18 T 438054 5012605	Manitoba Maple	28											28	Single Stem	Good
332	5	18 T 438054 5012602	Manitoba Maple	27											27	Single Stem	Good
333	5	18 T 438054 5012600	Manitoba Maple	24											24	Single Stem	Good
334	5	18 T 438057 5012593	Manitoba Maple	28											28	Single Stem	Good
335	5	18 T 438056 5012592	Manitoba Maple	16	15										15.5	Multistem	Good
336	5	18 T 438057 5012591	Manitoba Maple	16	15	14	16								15.25	Leaning / Multistem	Good
337	5	18 T 438059 5012586	Manitoba Maple	25											25	Single Stem	Good
338	5	18 T 438062 5012580	Manitoba Maple	22											22	Single Stem	Good
339	5	18 T 438062 5012580	Manitoba Maple	18											18	Single Stem	Good
340	5	18 T 438056 5012575	White Spruce	19											19	Single Stem	Good
341	5	18 T 438063 5012576	Manitoba Maple	16	17	15	15								15.75	Multistem	Good
342	5	18 T 438061 5012571	White Spruce	20											20	Single Stem	Good
343	5	18 T 438062 5012565	White Spruce	16											16	Single Stem	Good
344	5	18 T 438064 5012568	Manitoba Maple	18	11										14.5	Multistem	Good
345	5	18 T 438068 5012571	Manitoba Maple	10	14	8									10.6667	Multistem	Good
346	5	18 T 438068 5012566	Manitoba Maple	35											35	Leaning / Single Stem	Good
347	5	18 T 438064 5012558	Manitoba Maple	16	16	18	19								17.25	Multistem	Good
348	5	18 T 438065 5012555	White Spruce	15											15	Single Stem	Good
349	5	18 T 438067 5012551	White Spruce	12											12	Single Stem	Good
350	5	18 T 438069 5012551	Manitoba Maple	12	10	14									12	Multistem	Good
351	5	18 T 438073 5012546	Manitoba Maple	17	17	17	15	14	12						15.3333	Multistem	Good

ID	BLOCK #	UTM NAD83	SPECIES	DBH (cm)										AVERAGE DBH (cm)	COMMENTS	HEALTH	
352	5	18 T 438071 5012548	White Spruce	29											29	Single Stem	Good
353	5	18 T 438068 5012543	Sugar Maple	20											20	Single Stem	Good
354	5	18 T 438083 5012538	Manitoba Maple	31											31	Single Stem	Good
355	5	18 T 438085 5012532	Manitoba Maple	14	12	10									12	Multistem	Good
356	5	18 T 438083 5012525	White Spruce	25											25	Single Stem	Good
357	5	18 T 438089 5012518	Manitoba Maple	39											39	Leaning / Single Stem	Good
358	5	18 T 438088 5012511	Manitoba Maple	36											36	Leaning / Single Stem	Good
359	5	18 T 438097 5012492	Manitoba Maple	37											37	Leaning / Single Stem	Good
360	5	18 T 438101 5012486	Manitoba Maple	24	19	12	10								16.25	Multistem	Good
361	5	18 T 438104 5012460	Scots Pine	18											18	Single Stem	Good
362	5	18 T 438108 5012457	White Spruce	34											34	Single Stem	Good
363	5	18 T 438112 5012449	White Spruce	16											16	Single Stem	Good
364	5	18 T 438112 5012446	White Spruce	31											31	Single Stem	Good
365	5	18 T 438116 5012443	White Spruce	32											32	Single Stem	Good
366	5	18 T 438117 5012446	Manitoba Maple	14	14	14	10	17							13.8	Multistem	Good
367	5	18 T 438121 5012434	Manitoba Maple	14	10	20									14.6667	Multistem	Good
368	5	18 T 438116 5012436	White Spruce	16											16	Single Stem	Good
369	5	18 T 438116 5012434	White Spruce	29											29	Single Stem	Good
370	5	18 T 438118 5012430	White Spruce	21	26										23.5	Multistem	Good
371	5	18 T 438124 5012427	Manitoba Maple	10	26	10	18								16	Multistem	Good
372	5	18 T 438121 5012419	White Spruce	16											16	Single Stem	Good
373	5	18 T 438123 5012417	White Spruce	18	15										16.5	Multistem	Good

ID	BLOCK #	UTM NAD83	SPECIES	DBH (cm)											AVERAGE DBH (cm)	COMMENTS	HEALTH
374	5	18 T 438126 5012421	Manitoba Maple	12	10	12									11.3333	Multistem	Good
375	5	18 T 438127 5012417	Manitoba Maple	13	12										12.5	Multistem	Good
376	5	18 T 438128 5012405	White Spruce	26											26	Single Stem	Good
377	5	18 T 438132 5012400	White Spruce	32											32	Single Stem	Good
378	5	18 T 438132 5012401	Manitoba Maple	14	15	13	16								14.5	Leaning / Multistem	Good
379	5	18 T 438134 5012392	White Spruce	27											27	Single Stem	Good
380	5	18 T 438138 5012374	White Spruce	18											18	Single Stem	Good
381	5	18 T 438141 5012373	White Spruce	22											22	Single Stem	Good
382	5	18 T 438153 5012385	American Elm	19											19	Single Stem	Good
383	5	18 T 438157 5012385	Manitoba Maple	17											17	Single Stem	Good
384	5	18 T 438167 5012390	American Elm	23											23	Single Stem	Good
385	5	18 T 438166 5012390	American Elm	10											10	Single Stem	Good
386	5	18 T 438168 5012397	White Cedar	12	12	16	18	23	12						15.5	Multistem	Good
387	5	18 T 438171 5012394	American Elm	27											27	Single Stem	Good
388	5	18 T 438175 5012398	American Elm	12											12	Single Stem	Good
389	5	18 T 438181 5012400	Manitoba Maple	10	12	10	16								12	Multistem	Good
390	5	18 T 438180 5012418	White Cedar	16											16	Bark falling off / Single Stem	Dead
391	5	18 T 438178 5012420	American Elm	26											26	Single Stem	Good
392	5	18 T 438174 5012424	White Cedar	8	10	10	17	12	10	10	8	8	6	10	9.90909	Multistem	Good
393	5	18 T 438170 5012425	White Cedar	8	8	8	9	10	10	3	4	5			7.22222	Multistem	Good
394	5	18 T 438171 5012426	Balsam Fir	29											29	Single Stem	Good
395	5	18 T 438135 5012536	White Cedar	16	15	13	12	14	10	10	12	10			12.4444	Multistem	Good

ID	BLOCK #	UTM NAD83	SPECIES	DBH (cm)											AVERAGE DBH (cm)	COMMENTS	HEALTH
				15	16	17	18	19	20	21	22	23	24	25			
396	5	18 T 438125 5012544	White Cedar	15	15	16	10	10	12	13	8	9	10		11.8	Multistem	Good
397	5	18 T 438134 5012548	Manitoba Maple	16	10										13	Multistem	Good
398	5	18 T 438122 5012558	Manitoba Maple	16	16	15	14								15.25	Multistem	Good
399	5	18 T 438115 5012562	White Cedar	15	15	15	16								15.25	Multistem	Good
400	5	18 T 438145 5012512	Manitoba Maple	39											39	Single Stem	Good
401	5	18 T 438151 5012524	Largetooth Aspen	61											61	Single Stem	Good
402	5	18 T 438148 5012526	Largetooth Aspen	43											43	Single Stem	Good
403	3	18 T 438218 5012475	Scots Pine	12											12	Single Stem	Good
404	3	18 T 438222 5012467	American Elm	15	10	10	12	12	18	8					12.1429	Multistem	Good
405	3	18 T 438254 5012444	American Elm	28											28	Bark falling off / Single Stem	Dead
406	3	18 T 438249 5012439	American Elm	13											13	Bark falling off / Single Stem	Dead
407	3	18 T 438245 5012437	American Elm	24											24	Bark falling off / Single Stem	Dead
408	3	18 T 438237 5012432	American Elm	25											25	Single Stem	Good
409	3	18 T 438349 5012515	Sugar Maple	12											12	Single Stem	Good
410	3	18 T 438349 5012518	White Cedar	11											11	Single Stem	Good
411	3	18 T 438334 5012542	Black Maple	16											16	Single Stem	Good
412	3	18 T 438346 5012564	Trembling Aspen	15											15	Single Stem	Good
413	3	18 T 438378 5012583	White Pine	15											15	Single Stem	Good
414	2	18 T 438412 5012607	White Cedar	10	11										10.5	Multistem	Good
415	2	18 T 438443 5012596	Trembling Aspen	14											14	Single Stem	Good
416	2	18 T 438443 5012596	Trembling Aspen	13											13	Single Stem	Good
417	2	18 T 438443 5012595	Trembling Aspen	15											15	Single Stem	Good

ID	BLOCK #	UTM NAD83	SPECIES	DBH (cm)										AVERAGE DBH (cm)	COMMENTS	HEALTH		
418	2	18 T 438443 5012593	Trembling Aspen	10												10	Single Stem	Good
419	2	18 T 438439 5012591	Trembling Aspen	15												15	Single Stem	Good
420	2	18 T 438439 5012592	Trembling Aspen	15												15	Single Stem	Good
421	2	18 T 438439 5012591	Trembling Aspen	18												18	Single Stem	Good
422	2	18 T 438439 5012591	Trembling Aspen	16												16	Single Stem	Good
423	2	18 T 438437 5012593	Trembling Aspen	11												11	Single Stem	Good
424	2	18 T 438437 5012597	Trembling Aspen	13												13	Single Stem	Good
425	2	18 T 438425 5012568	Trembling Aspen	16												16	Single Stem	Good
426	2	18 T 438424 5012568	Trembling Aspen	15												15	Single Stem	Good
427	2	18 T 438424 5012568	Trembling Aspen	16	17											16.5	Multistem	Good
428	2	18 T 438412 5012556	Scots Pine	20												20	Single Stem	Good
429	2	18 T 438400 5012564	Balsam Poplar	10												10	Single Stem	Good
430	2	18 T 438401 5012563	Balsam Poplar	10												10	Single Stem	Good
431	2	18 T 438401 5012563	Balsam Poplar	11												11	Single Stem	Good
432	3	18 T 438378 5012541	Trembling Aspen	12												12	Single Stem	Good
433	3	18 T 438378 5012541	Trembling Aspen	24												24	Single Stem	Good
434	3	18 T 438378 5012541	Trembling Aspen	13												13	Single Stem	Good
435	3	18 T 438376 5012545	Trembling Aspen	10												10	Single Stem	Good
436	3	18 T 438373 5012547	Trembling Aspen	15												15	Single Stem	Good
437	3	18 T 438378 5012555	Trembling Aspen	11												11	Single Stem	Good
438	3	18 T 438379 5012555	Trembling Aspen	10												10	Single Stem	Good
439	3	18 T 438382 5012559	Trembling Aspen	12												12	Single Stem	Good

ID	BLOCK #	UTM NAD83	SPECIES	DBH (cm)										AVERAGE DBH (cm)	COMMENTS	HEALTH	
440	3	18 T 438384 5012563	White Spruce	16											16	Single Stem	Good
441	3	18 T 438380 5012562	Trembling Aspen	12											12	Single Stem	Good
442	3	18 T 438378 5012562	Trembling Aspen	24											24	Single Stem	Good
443	3	18 T 438377 5012562	Trembling Aspen	16											16	Single Stem	Good
444	3	18 T 438377 5012562	Trembling Aspen	16											16	Single Stem	Good
445	3	18 T 438371 5012559	White Cedar	16	17										16.5	Multistem	Good
446	3	18 T 438373 5012549	Trembling Aspen	14											14	Single Stem	Good
447	3	18 T 438366 5012537	Trembling Aspen	13											13	Single Stem	Good
448	3	18 T 438363 5012537	Trembling Aspen	12	13										12.5	Multistem	Good
449	3	18 T 438362 5012537	Trembling Aspen	13											13	Single Stem	Good
450	3	18 T 438361 5012539	Trembling Aspen	10											10	Single Stem	Good
451	3	18 T 438361 5012537	Trembling Aspen	11											11	Single Stem	Good
452	3	18 T 438362 5012536	Trembling Aspen	12											12	Single Stem	Good
453	3	18 T 438363 5012533	Trembling Aspen	10											10	Single Stem	Good
454	3	18 T 438356 5012538	Trembling Aspen	15	14	10									13	Multistem	Good
455	3	18 T 438355 5012537	Trembling Aspen	12	16										14	Multistem	Good
456	3	18 T 438363 5012514	Trembling Aspen	18	14	12									14.6667	Multistem	Good
457	3	18 T 438366 5012514	Trembling Aspen	12											12	Single Stem	Good
458	3	18 T 438370 5012510	White Cedar	16											16	Single Stem	Good
459	3	18 T 438372 5012508	Black Maple	24											24	Single Stem	Good
460	3	18 T 438365 5012504	Black Maple	19											19	Single Stem	Good
461	3	18 T 438371 5012504	White Cedar	21											21	Single Stem	Good

ID	BLOCK #	UTM NAD83	SPECIES	DBH (cm)										AVERAGE DBH (cm)	COMMENTS	HEALTH	
462	3	18 T 438370 5012504	White Cedar	16											16	Single Stem	Good
463	3	18 T 438371 5012503	White Spruce	14											14	Single Stem	Good
464	3	18 T 438375 5012503	White Cedar	15											15	Single Stem	Good
465	3	18 T 438375 5012503	White Cedar	16											16	Single Stem	Good
466	3	18 T 438375 5012505	White Cedar	12											12	Single Stem	Good
467	3	18 T 438376 5012506	White Cedar	14	10										12	Multistem	Good
468	3	18 T 438376 5012506	White Cedar	13											13	Single Stem	Good
469	3	18 T 438379 5012511	American Elm	36											36	Bark falling off / Single Stem	Poor
470	3	18 T 438379 5012514	Black Maple	12											12	Single Stem	Good
471	3	18 T 438383 5012506	White Cedar	13	14										13.5	Multistem	Good
472	3	18 T 438386 5012507	White Cedar	13											13	Single Stem	Good
473	3	18 T 438386 5012507	White Cedar	14											14	Single Stem	Good
474	3	18 T 438392 5012510	White Cedar	10											10	Single Stem	Good
475	3	18 T 438393 5012511	White Cedar	10											10	Single Stem	Good
476	3	18 T 438397 5012514	White Cedar	12											12	Single Stem	Good
477	3	18 T 438397 5012515	White Cedar	11											11	Single Stem	Good
478	3	18 T 438398 5012517	White Cedar	12											12	Single Stem	Good
479	2	18 T 438421 5012538	White Cedar	16											16	Single Stem	Good
480	2	18 T 438424 5012539	White Cedar	18											18	Single Stem	Good
481	2	18 T 438427 5012544	White Cedar	13											13	Single Stem	Good
482	2	18 T 438428 5012544	White Cedar	10											10	Single Stem	Good
483	2	18 T 438432 5012546	White Cedar	15											15	Single Stem	Good

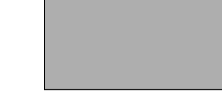
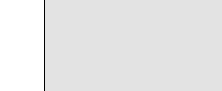



ID	BLOCK #	UTM NAD83	SPECIES	DBH (cm)										AVERAGE DBH (cm)	COMMENTS	HEALTH	
484	2	18 T 438435 5012546	White Cedar	13											13	Single Stem	Good
485	2	18 T 438435 5012546	White Cedar	16											16	Single Stem	Good
486	2	18 T 438438 5012548	White Cedar	17											17	Single Stem	Good
487	2	18 T 438440 5012549	Black Maple	13											13	Single Stem	Good
488	2	18 T 438446 5012552	American Elm	16											16	Single Stem	Good
489	2	18 T 438449 5012557	White Cedar	16											16	Single Stem	Good
490	2	18 T 438452 5012558	White Cedar	17											17	Single Stem	Good
491	2	18 T 438455 5012557	American Basswood	10	13	24									15.6667	Multistem	Good

Figure 1 TREE LOCATIONS



PLAN TO BE READ IN CONJUNCTION WITH
TREE CONSERVATION REPORT PREPARED
BY IFS ASSOCIATES DATED
DECEMBER 02, 2022

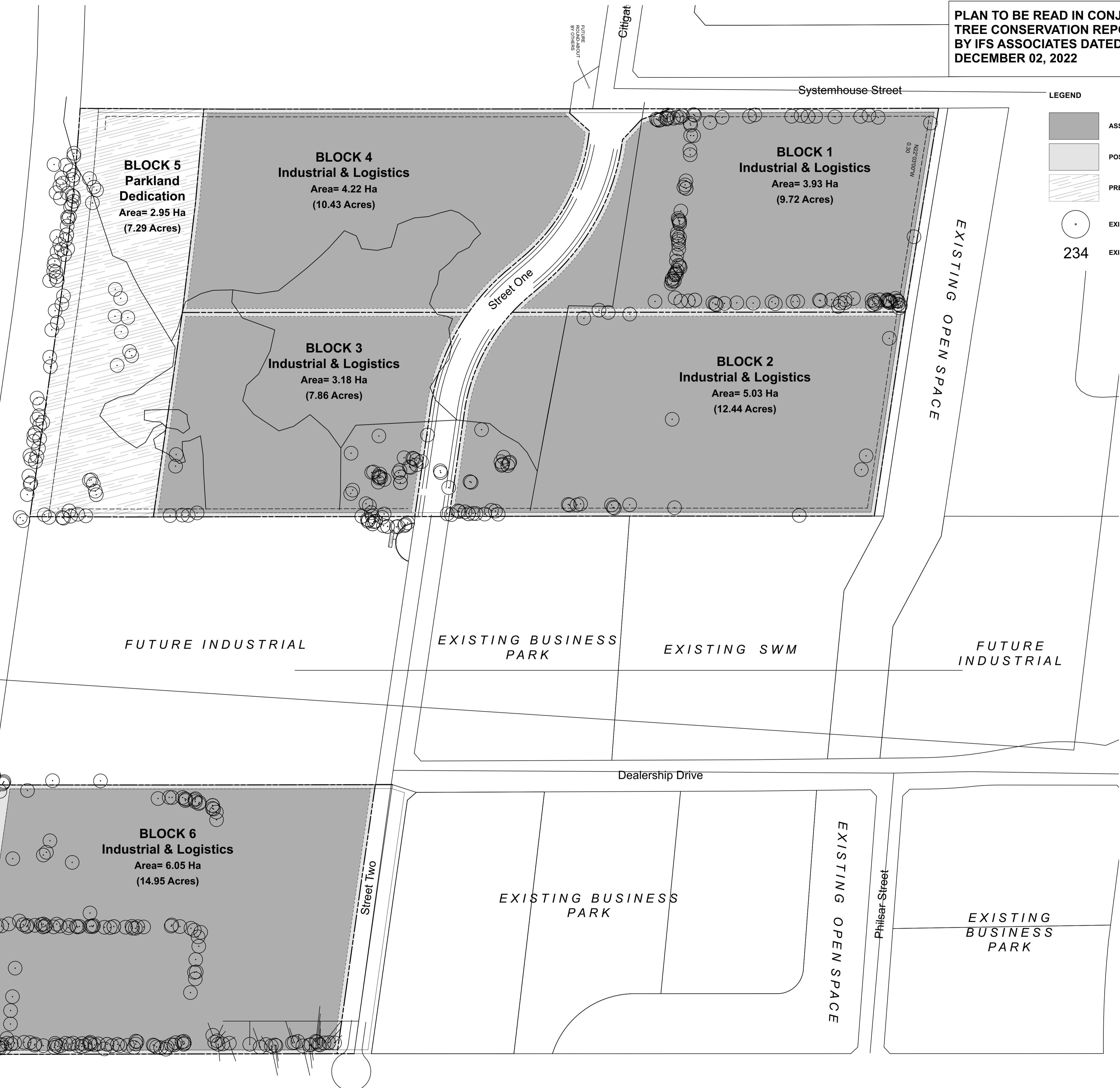
LEGEND

-  ASSUMED DEVELOPMENT AREA
-  POSSIBLE PRESERVATION AREA
-  PRESERVATION AREA
-  EXISTING TREE
-  EXISTING TREE ID #

ASSUMED DEVELOPMENT AREA:
ASSUMPTION MADE THAT THE SITES WILL BE DEVELOPED TO THEIR FULL POTENTIAL. REVIEW IF ANY FURTHER TREES MAY BE PRESERVED WITHIN THIS AREA AFTER A SITE PLAN HAS BEEN DEVELOPED FOR THE INDIVIDUAL BLOCKS.

POSSIBLE PRESERVATION AREA:
WITHIN THE LADSCAPE SETBACKS, PRESERVATION OF EXISTING TREES MAY BE FEASIBLE ONCE SITE CONSTRAINTS SUCH AS GRADING AND SERVICING HAS BEEN DESIGNED FOR THE INDIVIDUAL BLOCKS.

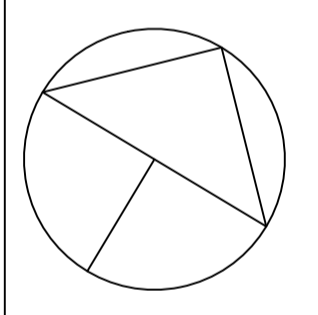
PRESERVATION AREA:
EXISTING VEGETATION TO BE PRESERVED WITHIN THE DEDICATED PARKLAND BLOCK.



1	Issued for Plan of Subdivision	Dec 02 '22
no.	issue / revision	date

north

seal




Ruhland & Associates Ltd
landscape architecture • urban design • site planning
Ph 613-224-4744 Fx 613-224-1131 info@rala.ca www.rala.ca

project
CITIGATE SYSTEMHOUSE

drawing title
EXISTING VEGETATION OVERALL PLAN

scale 1:1500	drawn by M. Malkov	designed by R. Ruhland
date November 2022	checked by R. Ruhland	plot date

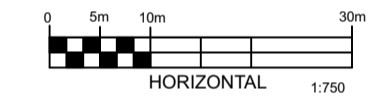
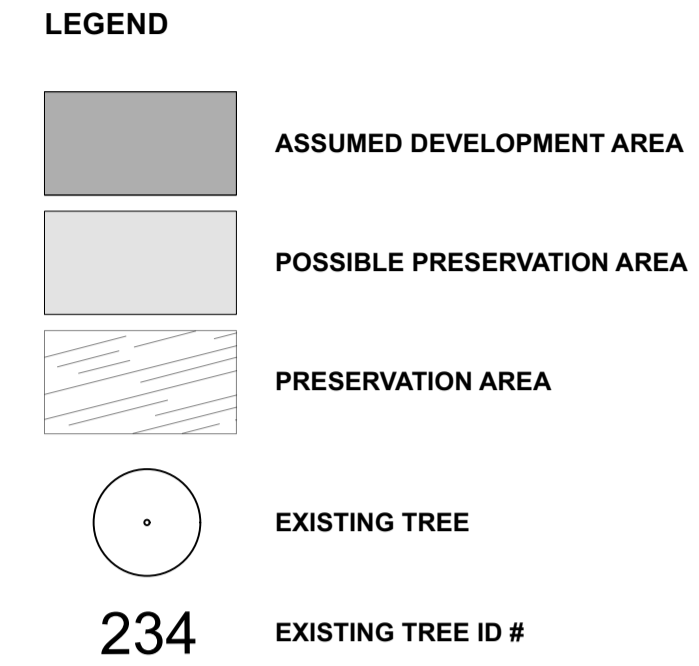
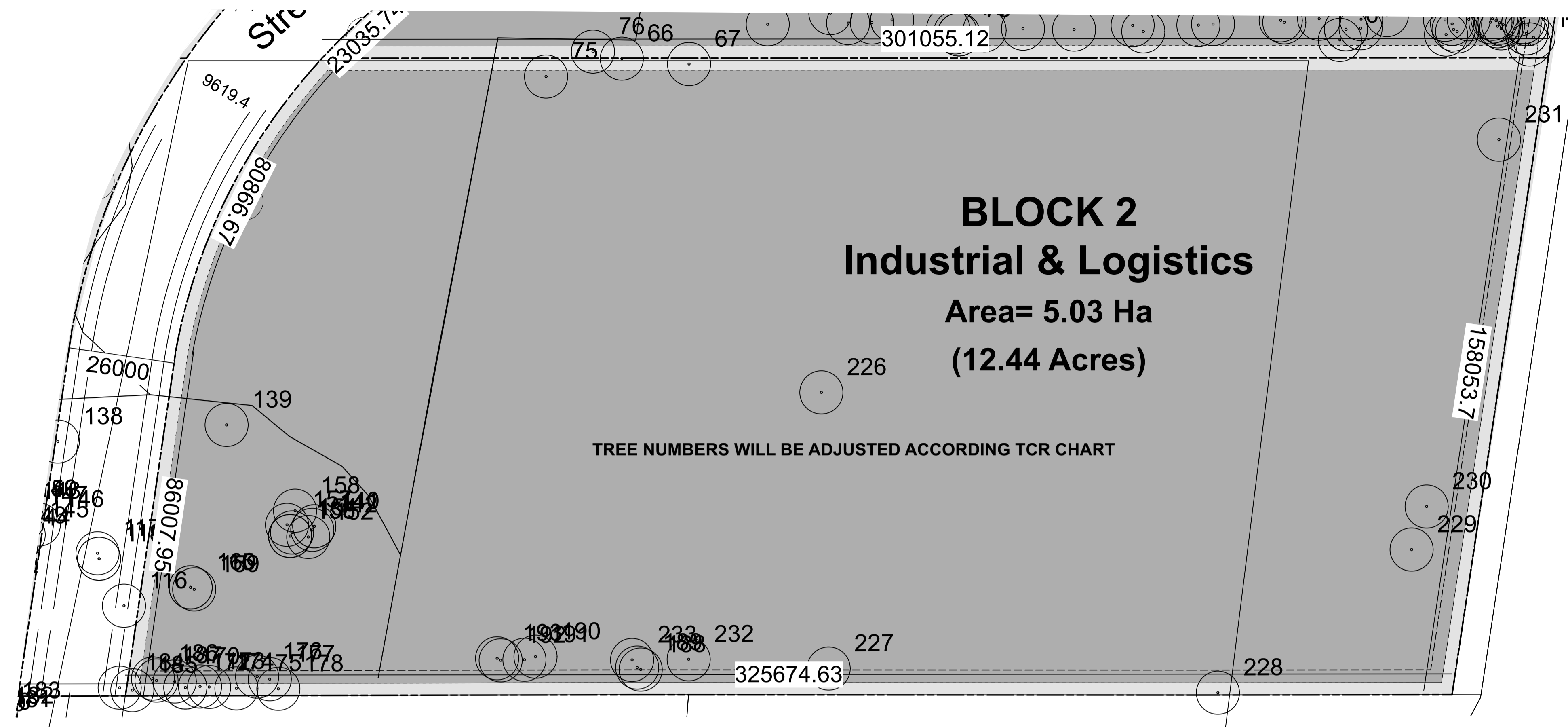
project number 22-1700	drawing number L - 01
----------------------------------	---------------------------------

Contractor to check and verify all dimensions on the job

D07-xxxxx

xxxx

PLAN TO BE READ IN CONJUNCTION WITH TREE CONSERVATION REPORT PREPARED BY IFS ASSOCIATES DATED DECEMBER 02, 2022



ASSUMED DEVELOPMENT AREA:
ASSUMPTION MADE THAT THE SITES WILL BE DEVELOPED TO THEIR FULL POTENTIAL. REVIEW IF ANY FURTHER TREES MAY BE PRESERVED WITHIN THIS AREA AFTER A SITE PLAN HAS BEEN DEVELOPED FOR THE INDIVIDUAL BLOCKS.

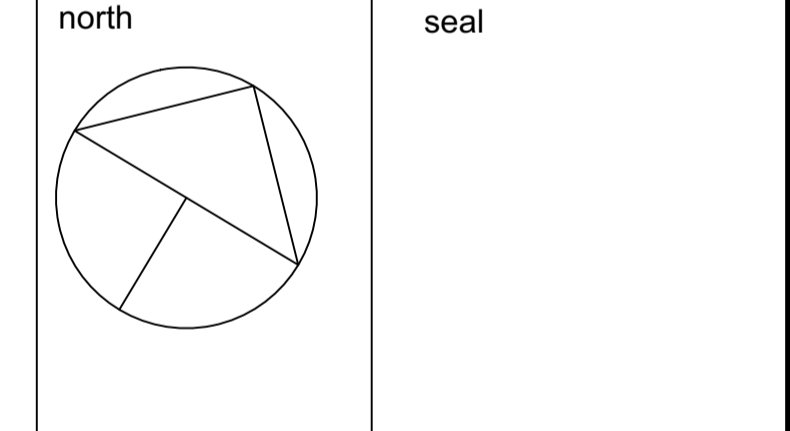
POSSIBLE PRESERVATION AREA:
WITHIN THE LADSCAPE SETBACKS, PRESERVATION OF EXISTING RTEES MAY BE FEASIBLE ONCE SITE CONSTRAINTS SUCH AS GRADING AND SERVICING HAS BEEN DESIGNED FOR THE INDIVIDUAL BLOCKS.

PRESERVATION AREA:
EXISTING VEGETATION TO BE PRESERVED WITHIN THE DEDICATED PARKLAND BLOCK.

ID	MARK	BLOCK	UTM NAD83	SPECIES	DBH_cm	AVG	COMMENTS	HEALTH	
1	213	2	18 T 438438 5012720	White Ash	20		Single Stem	Good	
2	214	2	18 T 438445 5012731	White Ash	25	18 32	Multistem	Poor	
3	215	2	18 T 438452 5012733	American Elm	30		Single Stem	Dead	
4	216	2	18 T 438467 5012740	American Elm	24	16 11 13	Multistem	Dead	
125	337	2	18 T 438570 5012628	Manitoba Maple	34	12 14	Multistem	Good	
126	338	2	18 T 438656 5012670	Eastern Cottonwood	14		Single Stem	Good	
127	339	2	18 T 438680 5012724	Manitoba Maple	11	12 9 14 13 10 10 11 12	11.3333	Multistem	Good
128	340	2	18 T 438678 5012735	Manitoba Maple	10		Single Stem	Good	
129	341	2	18 T 438649 5012822	Manitoba Maple	25	27	Multistem	Good	
130	342	2	18 T 438539 5012613	American Elm	42		Single Stem	Dead	
131	343	2	18 T 438527 5012606	Black Cherry	14		Single Stem	Good	
132	344	2	18 T 438530 5012605	American Elm	17		Single Stem	Dead	
133	345	2	18 T 438529 5012605	Manitoba Maple	44	30	Multistem	Good	
134	346	2	18 T 438506 5012595	American Elm	40		Single Stem	Dead	
135	347	2	18 T 438504 5012593	American Elm	25		Single Stem	Dead	
136	348	2	18 T 438499 5012590	American Elm	22		Single Stem	Dead	
137	349	2	18 T 438498 5012590	American Elm	12		Single Stem	Good	
414	398	2	18 T 438412 5012607	White Cedar	10	11	Multistem	Good	
415	400	2	18 T 438443 5012596	Trembling Aspen	14		Single Stem	Good	
416	401	2	18 T 438443 5012596	Trembling Aspen	13		Single Stem	Good	
417	402	2	18 T 438443 5012595	Trembling Aspen	15		Single Stem	Good	
418	403	2	18 T 438443 5012593	Trembling Aspen	10		Single Stem	Good	
419	404	2	18 T 438439 5012591	Trembling Aspen	15		Single Stem	Good	
420	405	2	18 T 438439 5012592	Trembling Aspen	15		Single Stem	Good	
421	406	2	18 T 438439 5012591	Trembling Aspen	18		Single Stem	Good	
422	407	2	18 T 438439 5012591	Trembling Aspen	16		Single Stem	Good	
423	408	2	18 T 438437 5012593	Trembling Aspen	11		Single Stem	Good	
424	409	2	18 T 438437 5012597	Trembling Aspen	13		Single Stem	Good	
425	410	2	18 T 438425 5012568	Trembling Aspen	16		Single Stem	Good	
426	411	2	18 T 438424 5012568	Trembling Aspen	15		Single Stem	Good	
427	412	2	18 T 438424 5012568	Trembling Aspen	16	17	Multistem	Good	
428	413	2	18 T 438412 5012556	Scots Pine	20		Single Stem	Good	
429	414	2	18 T 438400 5012564	Balsam Poplar	10		Single Stem	Good	
430	415	2	18 T 438401 5012563	Balsam Poplar	10		Single Stem	Good	
431	416	2	18 T 438401 5012563	Balsam Poplar	11		Single Stem	Good	
479	464	2	18 T 438421 5012538	White Cedar	16		Single Stem	Good	
480	465	2	18 T 438424 5012539	White Cedar	18		Single Stem	Good	
481	466	2	18 T 438427 5012544	White Cedar	13		Single Stem	Good	
482	467	2	18 T 438428 5012544	White Cedar	10		Single Stem	Good	
483	468	2	18 T 438432 5012546	White Cedar	15		Single Stem	Good	
484	469	2	18 T 438435 5012546	White Cedar	13		Single Stem	Good	
485	470	2	18 T 438435 5012546	White Cedar	16		Single Stem	Good	
486	471	2	18 T 438438 5012548	White Cedar	17		Single Stem	Good	
487	472	2	18 T 438440 5012549	Black Maple	13		Single Stem	Good	
488	473	2	18 T 438446 5012552	American Elm	16		Single Stem	Good	
489	474	2	18 T 438449 5012557	White Cedar	16		Single Stem	Good	
490	475	2	18 T 438452 5012558	White Cedar	17		Single Stem	Good	
491	476	2	18 T 438455 5012557	American Basswood	10	13 24	Multistem	Good	

1 Issued for Plan of Subdivision Dec 02 '22

no. issue / revision date



Ruhland & Associates Ltd
landscape architecture • urban design • site planning
Ph 613-224-4744 Fx 613-224-1131 info@rala.ca www.rala.ca

project
CITIGATE SYSTEMHOUSE

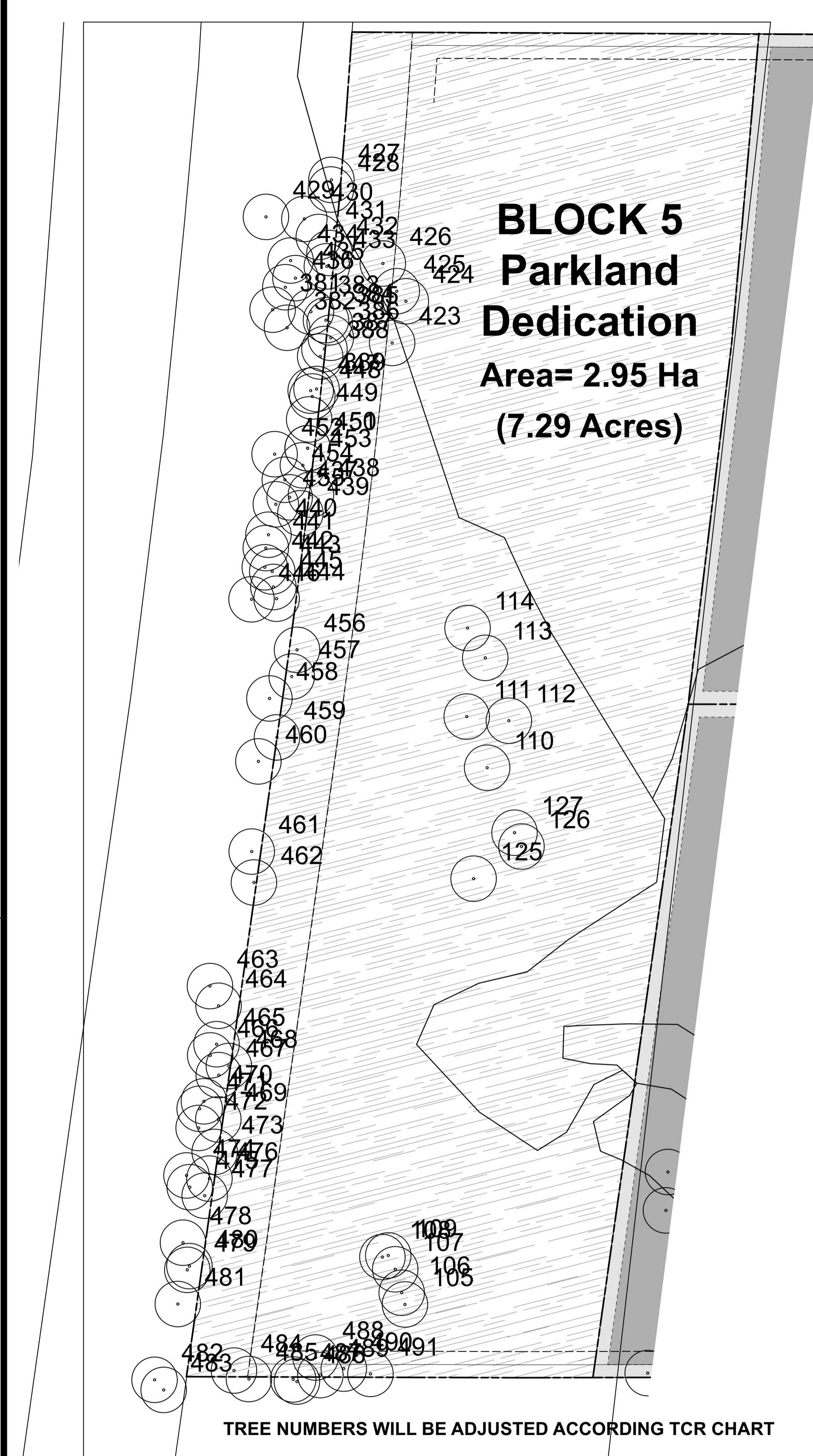
drawing title
EXISTING VEGETATION BLOCK #2

scale 1:750 drawn by M. Malkov designed by R. Ruhland
date November 2022 checked by R. Ruhland plot date

project number 22-1700 drawing number L - 03

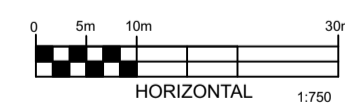
Contractor to check and verify all dimensions on the job

PLAN TO BE READ IN CONJUNCTION WITH TREE CONSERVATION REPORT PREPARED BY IFS ASSOCIATES DATED DECEMBER 02, 2022



BLOCK 5
Parkland
Dedication
Area= 2.95 Ha
(7.29 Acres)

TREE NUMBERS WILL BE ADJUSTED ACCORDING TCR CHART



LEGEND

- ASSUMED DEVELOPMENT AREA
- POSSIBLE PRESERVATION AREA
- PRESERVATION AREA
- EXISTING TREE
- EXISTING TREE ID # 234

ASSUMED DEVELOPMENT AREA: ASSUMPTION MADE THAT THE SITES WILL BE DEVELOPED TO THEIR FULL POTENTIAL. REVIEW IF ANY FURTHER TREES MAY BE PRESERVED WITHIN THIS AREA AFTER A SITE PLAN HAS BEEN DEVELOPED FOR THE INDIVIDUAL BLOCKS.

POSSIBLE PRESERVATION AREA: WITHIN THE LADSCAPE SETBACKS, PRESERVATION OF EXISTING TREES MAY BE FEASIBLE ONCE SITE CONSTRAINTS SUCH AS GRADING AND SERVICING HAS BEEN DESIGNED FOR THE INDIVIDUAL BLOCKS.

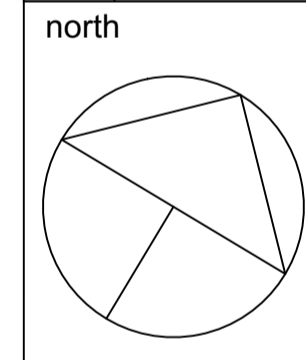
PRESERVATION AREA: EXISTING VEGETATION TO BE PRESERVED WITHIN THE DEDICATED PARKLAND BLOCK.

Table with 12 columns: ID, MARK, BLOCK, UTM NAD83, SPECIES, DBH_cm, AVG, COMMENTS, HEALTH. Lists tree data for blocks 110-114, 125-126, 127-128, 150-152, 153-154, 155-156, 157-158, 159-160, 161-162, 163-164, 165-166, 167-168, 169-170, 171-172, 173-174, 175-176, 177-178, 179-180, 181-182, 183-184, 185-186, 187-188, 189-190, 191-192, 193-194, 195-196, 197-198, 199-200, 201-202, 203-204, 205-206, 207-208, 209-210, 211-212, 213-214, 215-216, 217-218, 219-220, 221-222, 223-224, 225-226, 227-228, 229-230, 231-232, 233-234, 235-236, 237-238, 239-240, 241-242, 243-244, 245-246.

Table with 12 columns: ID, MARK, BLOCK, UTM NAD83, SPECIES, DBH_cm, AVG, COMMENTS, HEALTH. Lists tree data for blocks 247-252, 253-254, 255-256, 257-258, 259-260, 261-262, 263-264, 265-266, 267-268, 269-270, 271-272, 273-274, 275-276, 277-278, 279-280, 281-282, 283-284, 285-286, 287-288, 289-290, 291-292, 293-294, 295-296, 297-298, 299-300, 301-302, 303-304, 305-306, 307-308.

1 Issued for Plan of Subdivision Dec 02 '22

no. issue / revision date



Ruhland & Associates Ltd
landscape architecture • urban design • site planning
Ph 613-224-4744 Fx 613-224-1131 info@rala.ca www.rala.ca

CITIGATE SYSTEMHOUSE

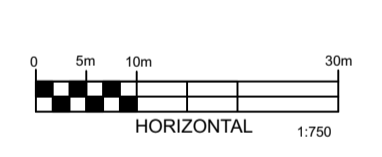
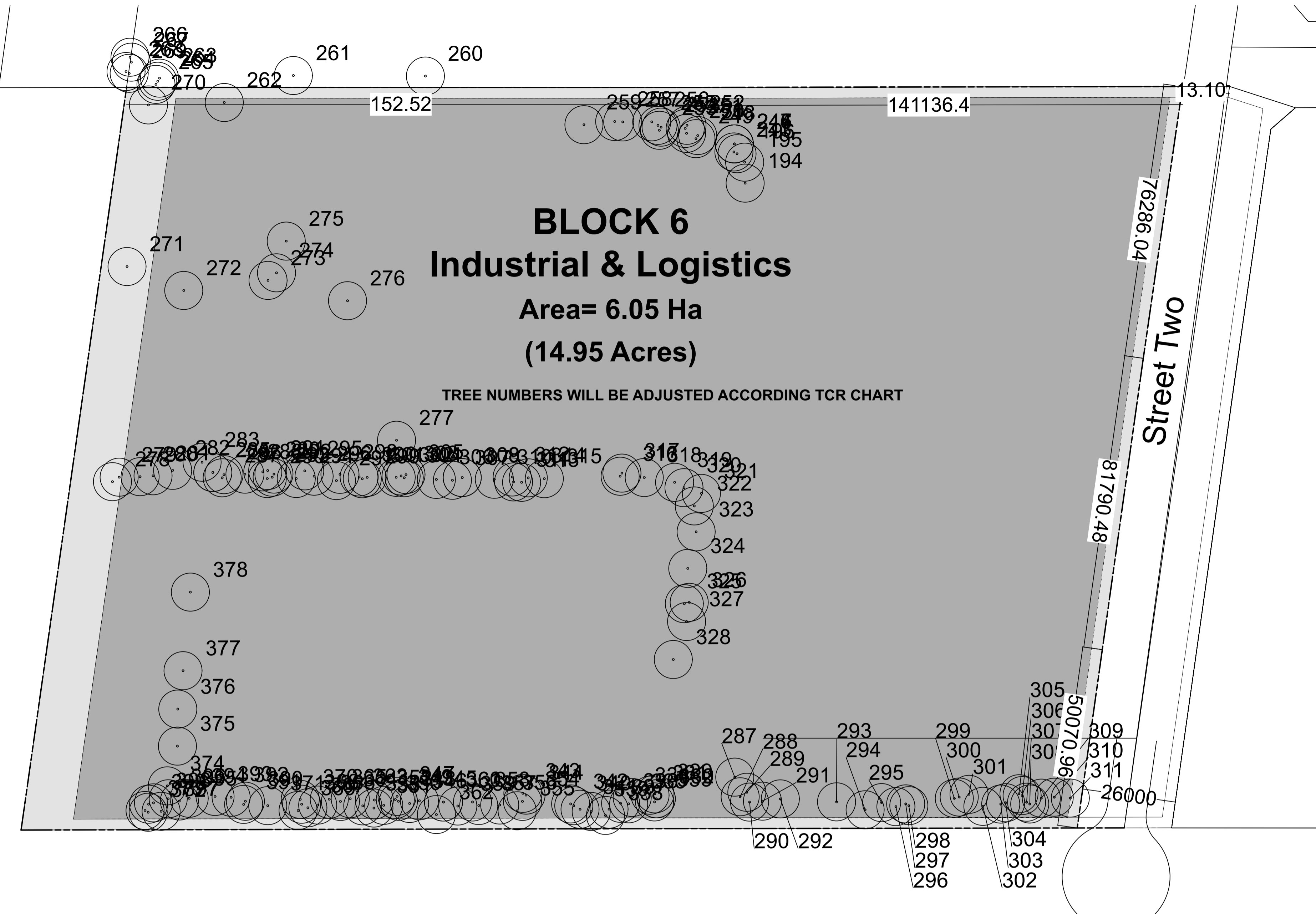
drawing title
EXISTING VEGETATION
BLOCKS #5
scale 1:750
date November 2022
project number 22-1700

drawn by M. Malkov
designed by R. Ruhland
checked by R. Ruhland
plot date
drawing number
L - 05
Contractor to check and verify all dimensions on the job

PLAN TO BE READ IN CONJUNCTION WITH TREE CONSERVATION REPORT PREPARED BY IFS ASSOCIATES DATED DECEMBER 02, 2022

LEGEND

- ASSUMED DEVELOPMENT AREA
- POSSIBLE PRESERVATION AREA
- PRESERVATION AREA
- EXISTING TREE
- 234 EXISTING TREE ID #



ASSUMED DEVELOPMENT AREA:
ASSUMPTION MADE THAT THE SITES WILL BE DEVELOPED TO THEIR FULL POTENTIAL. REVIEW IF ANY FURTHER TREES MAY BE PRESERVED WITHIN THIS AREA AFTER A SITE PLAN HAS BEEN DEVELOPED FOR THE INDIVIDUAL BLOCKS.

POSSIBLE PRESERVATION AREA:
WITHIN THE LADSCAPE SETBACKS, PRESERVATION OF EXISTING RTEES MAY BE FEASIBLE ONCE SITE CONSTRAINTS SUCH AS GRADING AND SERVICING HAS BEEN DESIGNED FOR THE INDIVIDUAL BLOCKS.

PRESERVATION AREA:
EXISTING VEGETATION TO BE PRESERVED WITHIN THE DEDICATED PARKLAND BLOCK.

1 Issued for Plan of Subdivision Dec 02 '22

no.	issue / revision	date
-----	------------------	------

north	seal
-------	------



Ruhland & Associates Ltd

landscape architecture • urban design • site planning
Ph 613-224-4744 Fx 613-224-1131 info@rala.ca www.rala.ca

project

CITIGATE SYSTEMHOUSE

drawing title

**EXISTING VEGETATION
BLOCK #6**

scale 1:750	drawn by M. Malkov	designed by R. Ruhland
----------------	-----------------------	---------------------------

date November 2022	checked by R. Ruhland	plot date
-----------------------	--------------------------	-----------

project number 22-1700	drawing number L - 06
---------------------------	--------------------------

project number 22-1700	drawing number L - 06
---------------------------	--------------------------

Contractor to check and verify all dimensions on the job

