

TOPOGRAPHICAL PLAN OF  
**560 DEALERSHIP DRIVE  
 BEING PART OF LOT 17  
 CONCESSION 4 (RIDEAU FRONT)  
 GEOGRAPHIC TOWNSHIP OF NEPEAN  
 CITY OF OTTAWA**

Prepared by Annis, O'Sullivan, Vollebek Ltd.  
 Field Work Completed December 23, 2020



Metric  
 DISTANCES SHOWN ON THIS PLAN ARE IN METRES AND  
 CAN BE CONVERTED TO FEET BY DIVIDING BY 0.3048

JAN 25 2021  
 Date  
 E. H. Herweyer  
 Ontario Land Surveyor

**Notes & Legend**

- Denotes
- ⊕ FH - Fire Hydrant
  - ⊗ T-P - Test Pit
  - ⊕ W - Water Valve
  - T/G - Top of Grate
  - Inv.E - Invert East
  - GE - Location of Ground Elevations
  - BOS - Bottom of Slope
  - TOS - Top of Slope
  - SRW - Stone Retaining Wall
  - EP - Edge of Pavement
  - MF - Metal Fence
  - PWF - Post and Wire Fence
  - ⊙ FP - Flag Pole
  - ⊙ LS - Light Standard
  - ⊙ MH-ST - Maintenance Hole (Storm Sewer)
  - ⊙ MH-S - Maintenance Hole (Sanitary)
  - ST — - Underground Storm Sewer
  - S — - Underground Sanitary Sewer
  - W — - Underground Water
  - + 65.00 - Location of Elevations
  - + 65.00 - Top of Wall Elevation
  - - - - Property Line

Caution  
 This is NOT a Plan of Survey and shall not be used except for the purpose indicated in the title block.

SITE AREA = 6.3237 Ha.

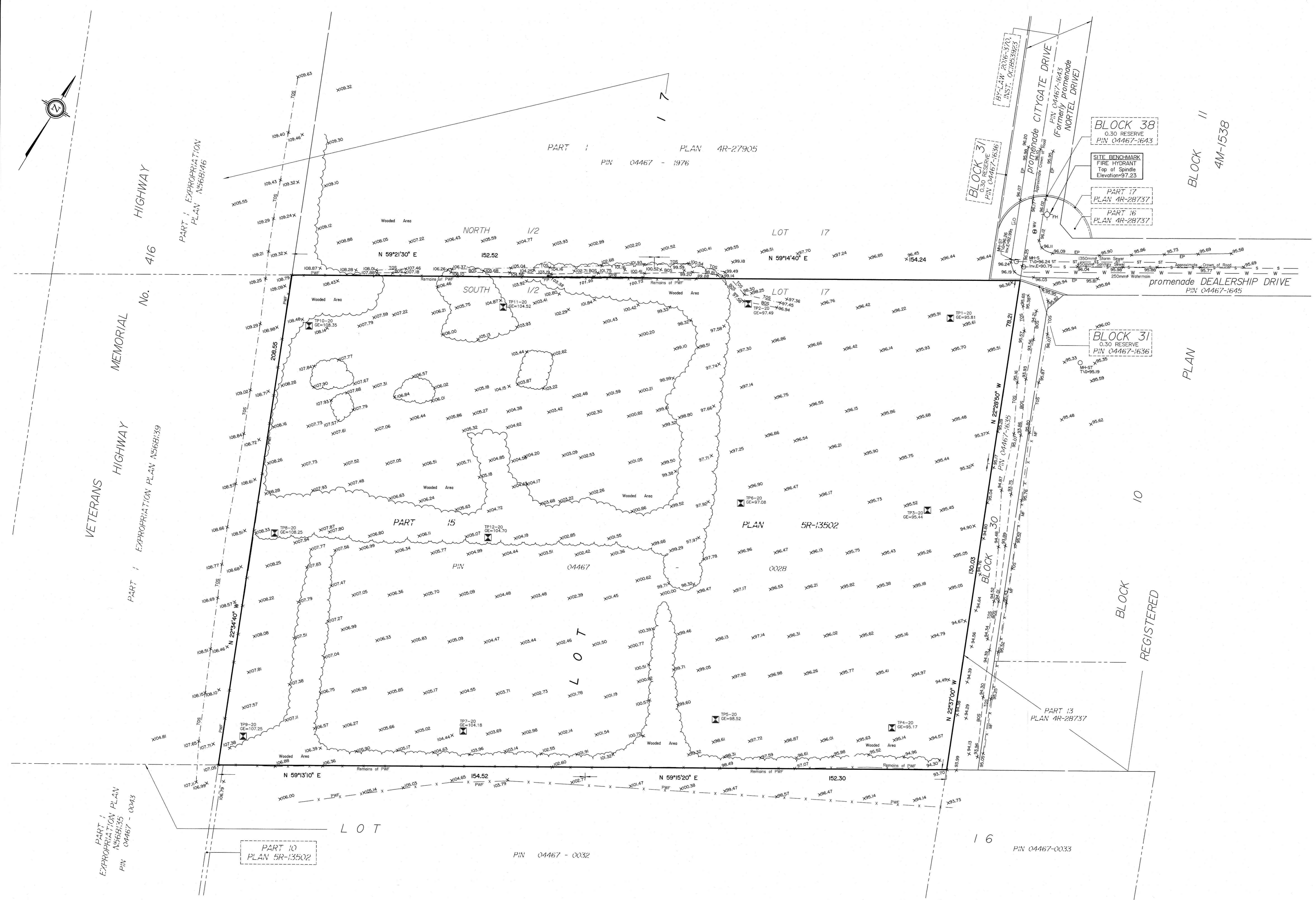
BOUNDARY INFORMATION COMPILED FROM  
 REGISTERED PLAN 4M-1538, PLANS 4R-27905, 5R-13502  
 AND SURVEY RECORDS.

**ELEVATION NOTES**

1. Elevations shown are geodetic and are referred to the CGVD28 geodetic datum, derived from control monument No. 00820118014, having a published elevation of 103.306m.
2. It is the responsibility of the user of this information to verify that the job benchmark has not been altered or disturbed and that its relative elevation and description agrees with the information shown on this drawing.

**UTILITY NOTES**

1. This drawing cannot be accepted as acknowledging all of the utilities and it will be the responsibility of the user to contact the respective utility authorities for confirmation.
2. Only visible surface utilities were located.
3. A field location of underground plant by the pertinent utility authority is mandatory before any work involving breaking ground, probing, excavating, etc.
4. Sanitary and Storm Sewer grades and inverts were taken from a Plan by Farley, Smith & Denis Surveying Ltd. dated June 9, 2018.
5. Underground Utility Data derived from City of Ottawa utility sheet drawing no. 109203-CG-P5 & 109203-CG-P6.



PART 1  
 EXPROPRIATION PLAN  
 N5668/46  
 PIN 04467-0043

PART 10  
 PLAN 5R-13502

PART 1  
 EXPROPRIATION PLAN N5668/39

PART 1  
 EXPROPRIATION PLAN N5668/46

