

**DRAFT PLAN OF SUBDIVISION OF
PART OF LOTS 26 and 27
CONCESSION 4**
Geographic Township of Goulbourn
CITY OF OTTAWA
Prepared by Annis, O'Sullivan, Vollebek Ltd.

Scale 1: 1250
0 10 20 30 40 50 Metres

Metric
DISTANCES SHOWN ON THIS PLAN ARE IN METRES AND
CAN BE CONVERTED TO FEET BY DIVIDING BY 0.3048

SURVEYOR'S CERTIFICATE

I CERTIFY THAT:
The boundaries of the lands to be subdivided and their relationship to
adjoining lands have been accurately and correctly shown.
Date _____ T. Hartwick
ONTARIO LAND SURVEYOR

OWNER'S CERTIFICATE

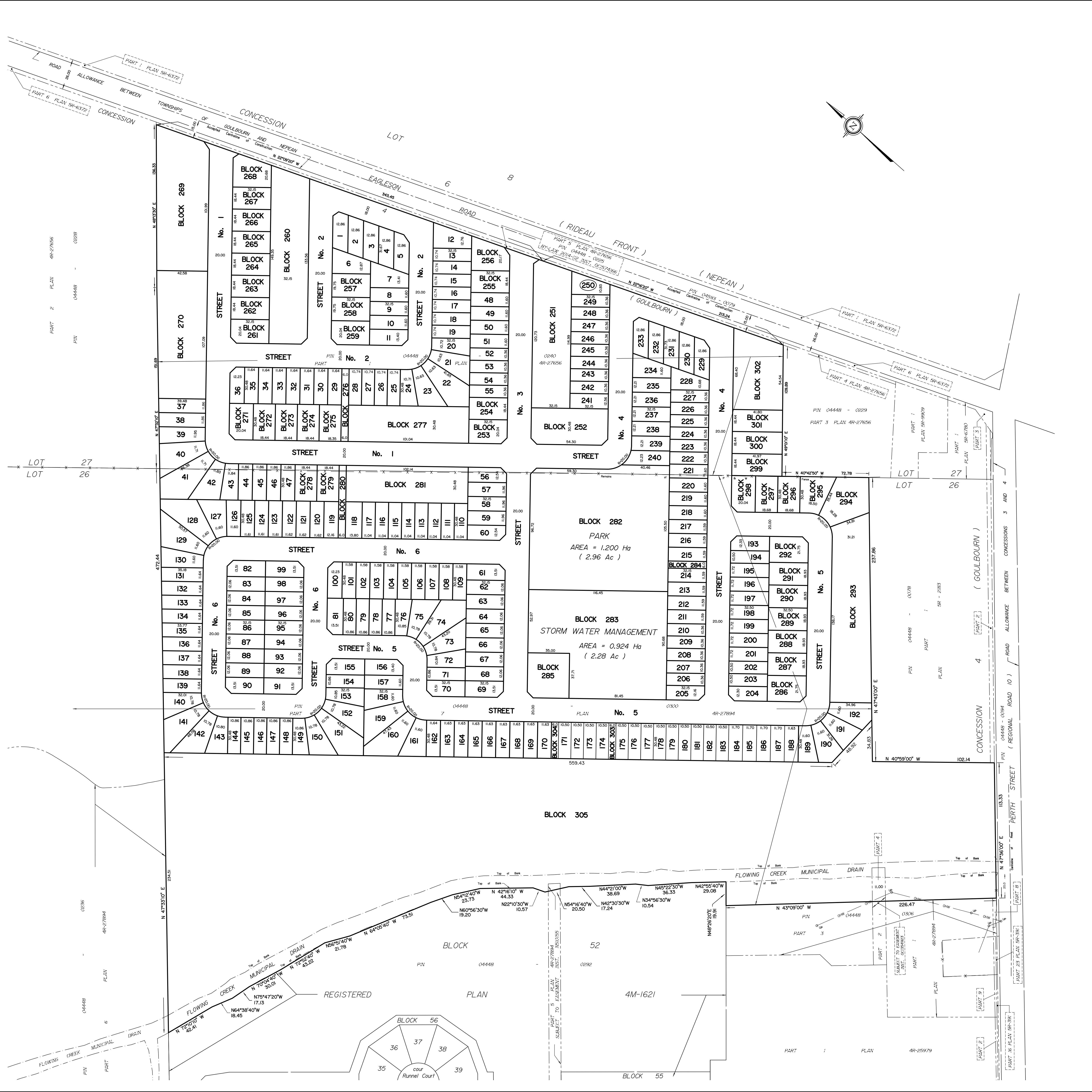
This is to certify that I am the owner / agent of the lands to be subdivided and
that this plan was prepared in accordance with my instructions.
Date _____ Greg Graham
1470424 Ontario Inc.
Castel Group of Companies
I have authority to bind the corporation

**ADDITIONAL INFORMATION REQUIRED UNDER
SECTION 51-17 OF THE PLANNING ACT**

- (a) see plan
- (b) see plan
- (c) see plan
- (d) single and multi-family residential housing, park land, storm water management
- (e) see plan
- (f) see plan
- (g) see plan
- (h) City of Ottawa
- (i) see soils report
- (j) see plan
- (k) sanitary, storm sewers, municipal water, bell, hydro, cable and gas to be available
- (l) see plan

PROPOSED LAND USE TABLE			
PROPOSED USE	LOTS / BLOCKS	NUMBER OF UNITS	AREA (sqm)
SINGLE DETACHED	1 - 250	250	99 986
TOWNHOMES	251, 252, 260, 269, 270, 277, 281, 293	130	31 043
SEMI DETACHED	253-259, 261-268, 271-275, 278, 279, 286-292, 294-301	74	23 887
STREETS	1 - 6		63 800
PARK LAND			12 000
WALKWAYS	276, 280, 284, 303, 304		1 229
STORM WATER LANDS	283		9 240
PUMPING STATION	285		1 307
OTHER	302		2 561
	305		92 268
TOTAL		454	337 321

ANNIS, O'SULLIVAN, VOLLEBEK LTD.
14 Concourse Gate, Suite 500
Nepean, ON K2E 7S9
Phone: (613) 727-0850 / Fax: (613) 727-1079
Email: info@anniso.com
Job No. 20204-20 Con. P1 L26 C4 00 DPS 03



PART 2 PLAN 4R-27866
PIN 04448 - 0228

LOT 27
LOT 26

CONCESSION 4
STREET PERTH
STREET PERTH
STREET PERTH
STREET PERTH

ANNIS, O'SULLIVAN, VOLLEBEK LTD.
14 Concourse Gate, Suite 500
Nepean, ON K2E 7S9
Phone: (613) 727-0850 / Fax: (613) 727-1079
Email: info@anniso.com