

LEGEND

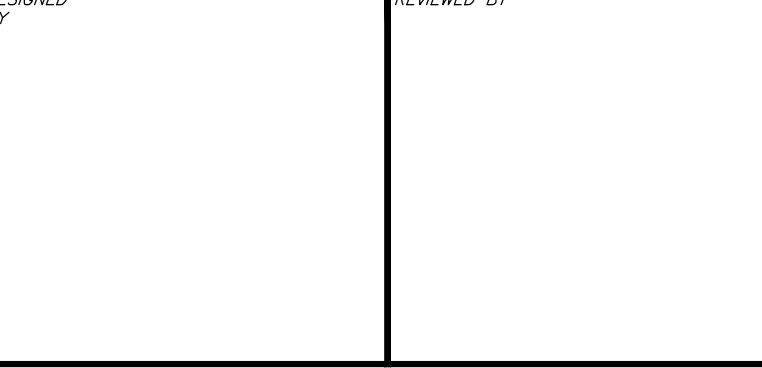
- PROPERTY LINE
- 115 SANITARY MH NUMBER
- 215 PROPOSED SANITARY MH/SEWER
- 215 STORM MH NUMBER
- 215 PROPOSED STORM MH/SEWER
- PROPOSED REAR YARD CATCH-BASIN TEE/ ELBOW PER CITY DETAIL S30 & S31
- PROPOSED 600x600 PCC CATCH-BASIN PER OPSD 705.010
- PROPOSED 600x600 PCC CATCH-BASIN PER OPSD 705.010 C/W ICD
- PROPOSED 1200mm PCC STORM MAINTENANCE HOLE PER OPSD 701.010 C/W ICD
- PROPOSED PVC DR-18 WATERMAIN
- PROPOSED FIRE HYDRANT & VALVE
- PROPOSED WATERMAIN FITTINGS
- OUTSIDE PROPOSED DEVELOPMENT
- FIRE RATED WALL (2HR)

CAUTION
 THE POSITION OF ALL POLE LINES, CONDUITS, WATERMANS, SEWERS AND OTHER UNDERGROUND AND OVERGROUND UTILITIES AND STRUCTURES IS NOT NECESSARILY SHOWN ON THE CONTRACT DRAWINGS, AND WHERE SHOWN, THE ACCURACY OF THE POSITION OF SUCH UTILITIES AND STRUCTURES IS NOT GUARANTEED. BEFORE STARTING WORK, DETERMINE THE EXACT LOCATION OF ALL SUCH UTILITIES AND STRUCTURES AND ASSUME ALL LIABILITY FOR DAMAGE TO THEM.

JOB BENCH MARK JBM ▲
 TOP OF HEAD OF MAGNETIC NAIL SET IN SIDE OF CONCRETE SIGN
 BASE 0.2± ABOVE GRADE ELEVATION=120.77
 NORTHING=5014575.29 EASTING=349007.23

TOPOGRAPHIC INFORMATION
 PART OF LOT 12, CONCESSION 12, GEOGRAPHIC TOWNSHIP OF GOULBOURN, CITY OF OTTAWA.
 TOPOGRAPHIC INFORMATION PROVIDED BY FAIRHALL MOFFATT & WOODLAND LIMITED O.L.S (P3862) SURVEY DATED JANUARY 14, 2020.
 SITE GRID SYSTEM NAD 83, ZONE 9.

REV	REVISION DESCRIPTION	DATE	BY	APPD
5	ISSUED FOR APPROVAL	05/12/22	SK	BMT
4	ISSUED FOR COORDINATION	02/08/22	JH	BMT
3	REVISED PER CITY COMMENTS	09/24/21	SK	BMT
2	SUBMISSION NO.2	04/27/21	SK	BMT
1	SUBMISSION NO.1	04/08/20	SK	BMT



DESIGNED BY: [Signature]

REVIEWED BY: [Signature]

OWNER: **LATITUDE HOMES**
 1202 CARP ROAD
 STITTVILLE, ON. K2S 1B9

PROJECT No. 258780
 SURVEY 238800-FMW
 DATE 24/07/20

exp. Services Inc.
 1-813-688-1899 | +1-613-225-7330
 1000 Highway 100, Unit 100
 Ottawa, ON K2B 8R6
 Canada
 www.exp.com

BASEPLAN SK
 DESIGN JLF
 CHECKED BMT
 CAD SK
 PROJECT MANAGER JLF
 APPROVED BMT

HAZELDEAN HORIZONS
 6171 HAZELDEAN ROAD
 OTTAWA, ONTARIO.

SERVICING PLAN 2

C101