

LEGEND

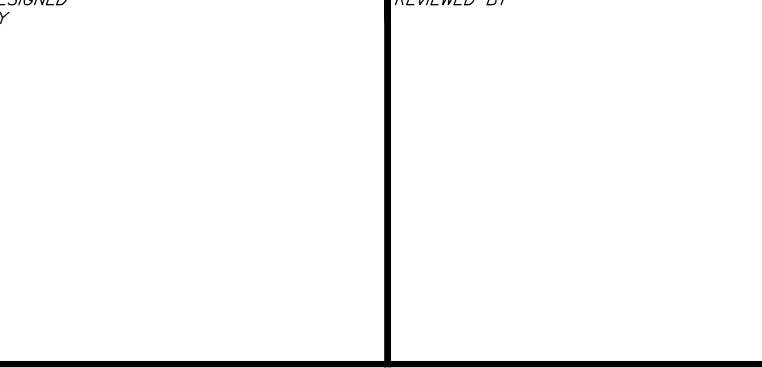
- PROPERTY LINE
- SANITARY MH NUMBER
- PROPOSED SANITARY MH/SEWER
- STORM MH NUMBER
- PROPOSED STORM MH/SEWER
- PROPOSED REAR YARD CATCH-BASIN TEE/ ELBOW PER CITY DETAIL S30 & S31
- PROPOSED 600x600 PCC CATCH-BASIN PER OPSD 705.010
- PROPOSED 600x600 PCC CATCH-BASIN PER OPSD 705.010 C/W ICD
- PROPOSED 1200mm PCC CATCH-BASIN MAINTENANCE HOLE PER OPSD 701.010 C/W ICD
- PROPOSED PVC DR-18 WATERMAIN
- PROPOSED FIRE HYDRANT & VALVE
- PROPOSED WATERMAIN FITTINGS
- OUTSIDE PROPOSED DEVELOPMENT
- FIRE RATED WALL (2HR)

CAUTION
 THE POSITION OF ALL POLE LINES, CONDUITS, WATERMANS, SEWERS AND OTHER UNDERGROUND AND OVERGROUND UTILITIES AND STRUCTURES IS NOT NECESSARILY SHOWN ON THE CONTRACT DRAWINGS, AND WHERE SHOWN, THE ACCURACY OF THE POSITION OF SUCH UTILITIES AND STRUCTURES IS NOT GUARANTEED. BEFORE STARTING WORK, DETERMINE THE EXACT LOCATION OF ALL SUCH UTILITIES AND STRUCTURES AND ASSUME ALL LIABILITY FOR DAMAGE TO THEM.

JOB BENCH MARK \blacktriangle
 TOP OF HEAD OF MAGNETIC NAIL SET IN SIDE OF CONCRETE SIGN
 BASE 0.2± ABOVE GRADE ELEVATION=120.77
 NORTHING=5014575.29 EASTING=349007.23

TOPOGRAPHIC INFORMATION
 PART OF LOT 12, CONCESSION 12, GEOGRAPHIC TOWNSHIP OF GOULBOURN, CITY OF OTTAWA.
 TOPOGRAPHIC INFORMATION PROVIDED BY FAIRHALL MOFFATT & WOODLAND LIMITED O.L.S (P3882) SURVEY DATED JANUARY 14, 2020.
 SITE GRID SYSTEM NTM NAD 83, ZONE 9.

REV	REVISION DESCRIPTION	DATE	BY	APPD
5	ISSUED FOR APPROVAL	05/12/22	SK	BMT
4	ISSUED FOR COORDINATION	02/08/22	JH	BMT
3	REVISED PER CITY COMMENTS	09/24/21	SK	BMT
2	SUBMISSION NO.2	04/27/21	SK	BMT
1	SUBMISSION NO.1	04/08/20	SK	BMT



DESIGNED BY: SK
 CHECKED BY: JLF
 DRAWN BY: BMT
 PROJECT MANAGER: SK
 TITLE: JLF
 APPROVED BY: BMT

LATITUDE HOMES
 1202 CARP ROAD
 STITTSVILLE, ON. K2S 1B9

exp.
 exp Services Inc.
 1-833-688-1899 | T: 613 225 7330
 1000 Highway 70, Unit 100
 Ottawa, ON K2B 8R6
 Canada
 www.exp.com

• BUILDINGS • EARTH & ENVIRONMENT • ENERGY •
 • INDUSTRIAL • INFRASTRUCTURE • SUSTAINABILITY •

PROJECT No.	258780
SURVEY	238800-FMW
DATE	24/07/20
DRAWING No.	C100

HAZELDEAN HORIZONS
 6171 HAZELDEAN ROAD
 OTTAWA, ONTARIO.

SERVICING PLAN 1