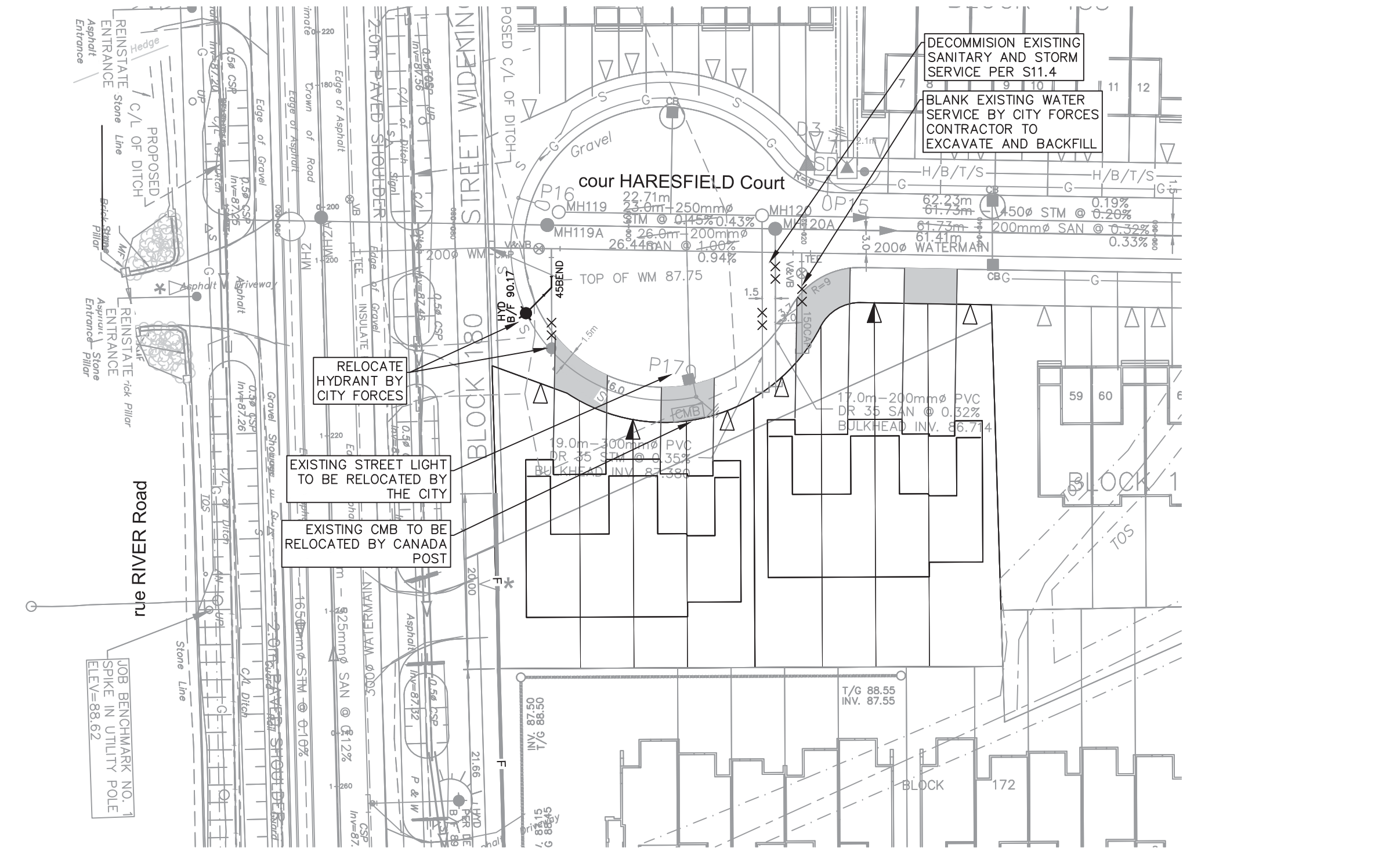


SERVICING PLAN



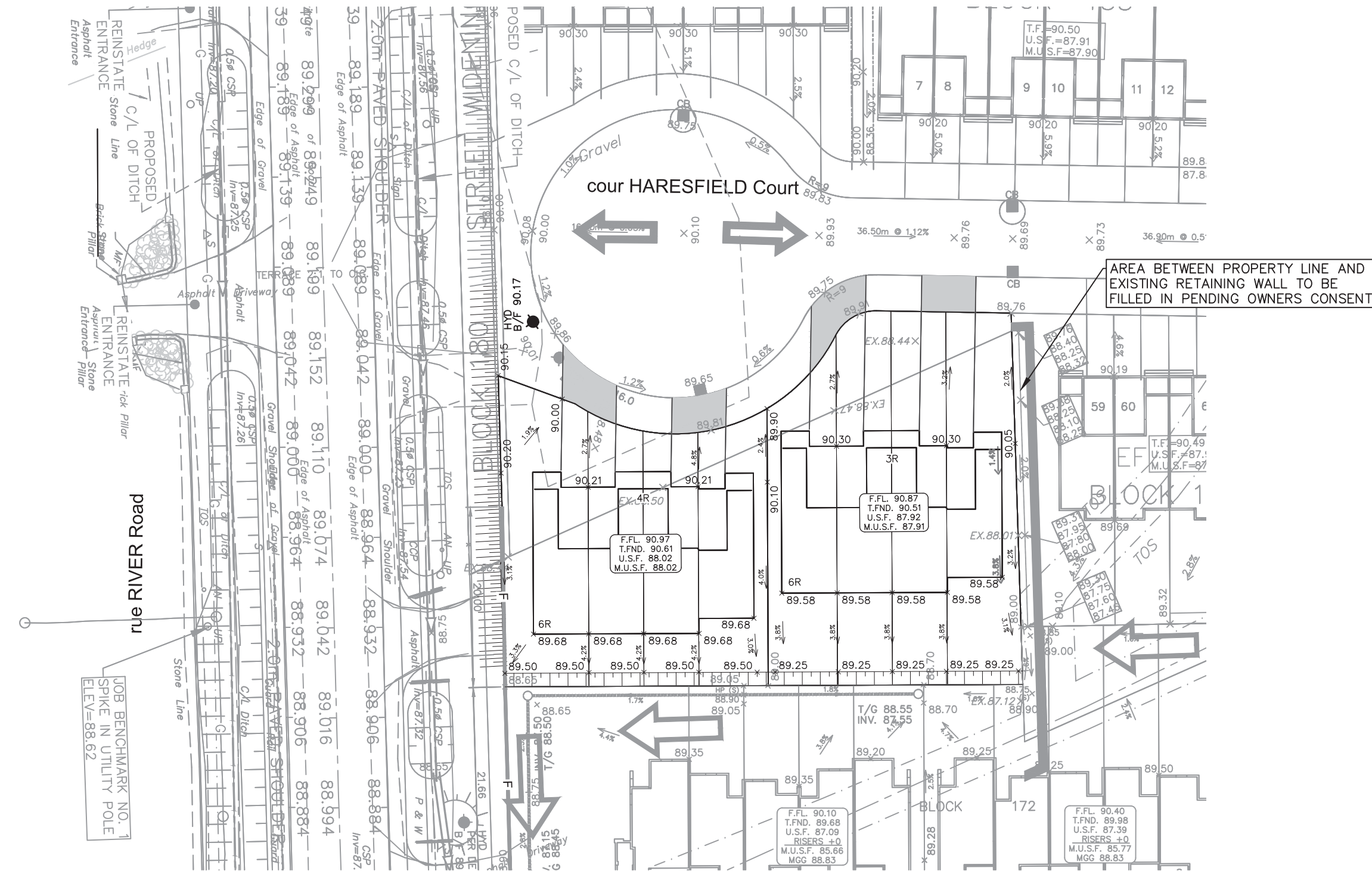
SERVICING LEGEND

- MH118A EXISTING SANITARY MANHOLE
- 200mm SAN EXISTING SANITARY SEWER
- MH109 ○ MH118 EXISTING STORM MANHOLE
- 825mm STM EXISTING STORM SEWER
- 200Ø WATERMAIN EXISTING WATERMAIN
- 17/6 104.10 EXISTING STREET CATCHBASIN C/W TOP OF GRATE
- ◆ HYD 104.35 FIRE HYDRANT C/W BOTTOM OF FLANGE ELEVATION
- ▲ SINGLE SERVICE LOCATION
- ▲▲ DOUBLE SERVICE LOCATION

EXISTING UTILITY LEGEND

- ⊠ TRANSFORMER
- ⊙ STREET LIGHT
- ⊙ STREET LIGHT DISCONNECT
- ⊙ STREET LIGHT GROUNDING
- H/B/T/C/S JOINT UTILITY TRENCH
- H HYDRO CABLE AND DUCTS
- B BELL CABLE
- BB BELL DUCTS
- T ROGERS CABLE
- TT ROGERS DUCTS
- G GAS
- S STREET LIGHT CABLE
- UTILITY DROP LOCATIONS
- CONCRETE ENCASED DUCT BANK C/W NUMBER OF DUCTS
- COMMUNITY MAILBOX

GRADING PLAN



GRADING LEGEND

- SLOPE C/W FLOW DIRECTION
- PROPOSED SPOT GRADE
- TERRACING 3:1 MAXIMUM UNLESS NOTED OTHERWISE
- FINISHED FLOOR ELEVATION
- TOP OF FOUNDATION ELEVATION
- UNDERSIDE OF FOOTING ELEVATION
- MINIMUM UNDERSIDE OF FOOTING (Based on the higher of the sewer covers, or hydraulic grade line)
- F NOISE FENCE LOCATION
- EXISTING BARRIER CURB
- EXISTING MOUNTABLE CURB
- EXISTING DEPRESSED BARRIER CURB

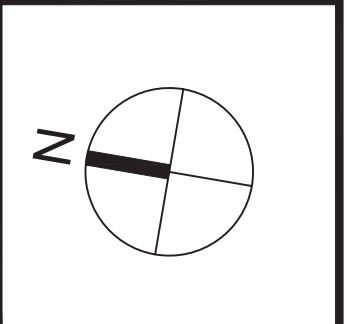
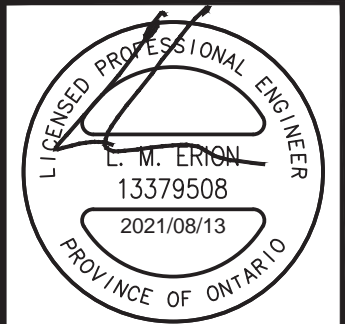
21			
20			
19			
18			
17			
16			
15			
14			
13			
12			
11			
10			
9			
8			
7			
6	ISSUED FOR REVIEW	L.M.E	2021.08.13
No.	REVISIONS	By	Date

SUMMERHILL VILLAGE

IBI GROUP
 400 - 333 Preston Street
 Ottawa ON K1S 5N4 Canada
 tel 613 225 1311 fax 613 225 9868
 ibigroup.com

Project Title

737 RIVER ROAD
 RIVERSIDE SOUTH



GRADING AND
 SERVICING PLAN

Scale 1 : 500

Design	L.E.	Date	SEPT. 2018
Drawn	C.C.	Checked	L.E.
Project No.	3766	Drawing No.	C-001