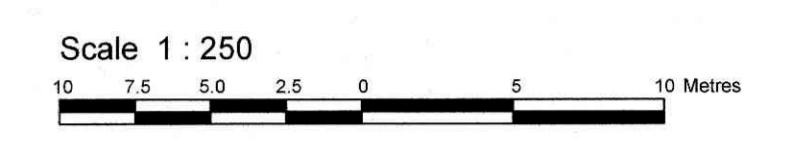


PART OF LOT 1
CONCESSION 1
GEOGRAPHIC TOWNSHIP OF HUNTLEY
CITY OF OTTAWA

Prepared by Annis, O'Sullivan, Vollebek Ltd.



Metric
DISTANCES SHOWN ON THIS PLAN ARE IN METRES AND
CAN BE CONVERTED TO FEET BY DIVIDING BY 0.3048

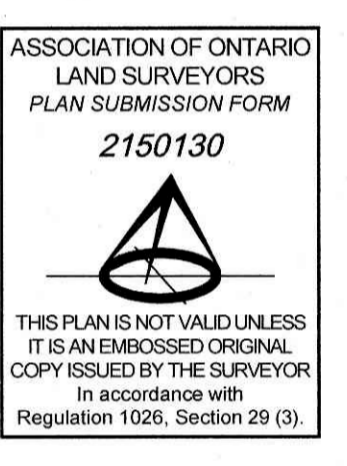
Surveyor's Certificate

I CERTIFY THAT:
1. This survey and plan are correct and in accordance with the Surveys Act, the Surveyors Act and the regulations made under them.
2. The survey was completed on the 21st day of December, 2020.

Date: 21 Dec 2020
T. Hartwick
Ontario Land Surveyor

Notes & Legend

- Denotes
- Survey Monument Planted
 - Survey Monument Found
 - SIB Standard Iron Bar
 - SSIB Short Standard Iron Bar
 - IB Iron Bar
 - (WIT) Witness
 - Mess. Measured
 - (AOS) Annis, O'Sullivan, Vollebek Ltd.
 - (PI) Plan 4R-20914
 - (P2) (B57) Plan April 10, 1984
 - Deciduous Tree
 - Coniferous Tree
 - BH Borehole
 - FH Fire Hydrant
 - WV Water Valve
 - W Well Cap
 - MH-ST Maintenance Hole (Storm Sewer)
 - MH-S Maintenance Hole (Sanitary)
 - HM Hydro Meter
 - VC Valve Chamber (Watermain)
 - △ S Sign
 - UP Utility Pole
 - AN Anchor
 - AC Air Conditioner
 - MB Mail Box
 - P — Approximate Underground Power
 - OHW — Overhead Wires
 - CBRW — Concrete Block Retaining Wall
 - CSP — Corrugated Steel Pipe
 - INV — Invert
 - T/G — Top of Grate
 - ∅ Diameter
 - Location of Elevations
 - Top of Wall Elevation
 - BOS Bottom of Slope
 - TOS Top of Slope
 - PWF Post & Wire Fence
 - RF Rail Fence
 - C/L Centreline
 - CH Cedar Hedge
 - Property Line



SITE AREA = 8917.7 m²
0.89 hectares

Bearings are grid, derived from Can-Net 2016 Real Time Network GPS observations, MTM Zone 9 (78°30' West Longitude) NAD-83 (original).

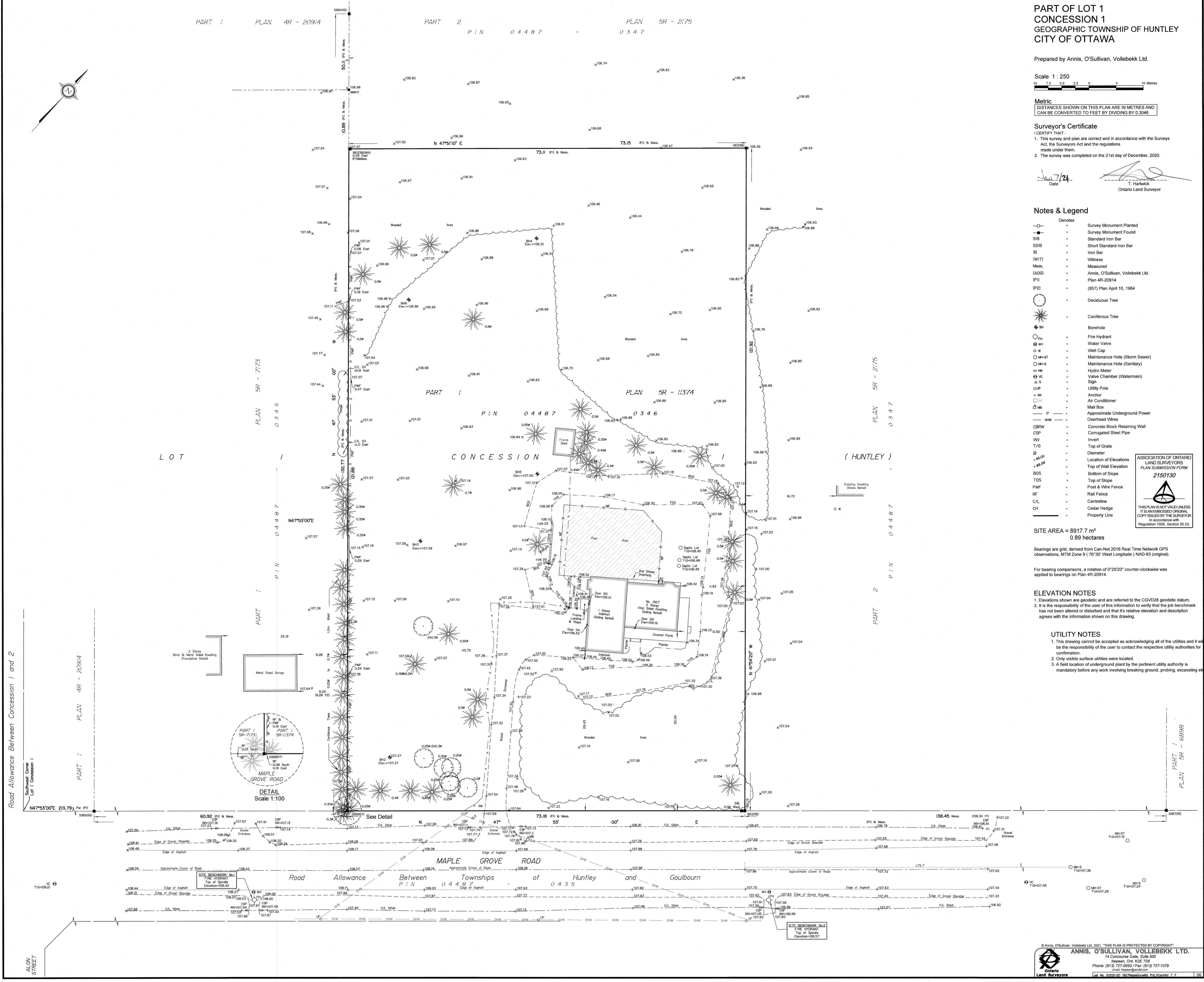
For bearing comparisons, a rotation of 0°25'20" counter-clockwise was applied to bearings on Plan 4R-20914.

ELEVATION NOTES

1. Elevations shown are geodetic and are referred to the CGVD28 geodetic datum.
2. It is the responsibility of the user of this information to verify that the job benchmark has not been altered or disturbed and that its relative elevation and description agrees with the information shown on this drawing.

UTILITY NOTES

1. This drawing cannot be accepted as acknowledging all of the utilities and it will be the responsibility of the user to contact the respective utility authorities for confirmation.
2. Only visible surface utilities were located.
3. A field location of underground plant by the pertinent utility authority is mandatory before any work involving breaking ground, probing, excavating etc.



Road Allowance Between Concession 1 and 2

PART 1
PLAN 5R - 68598