

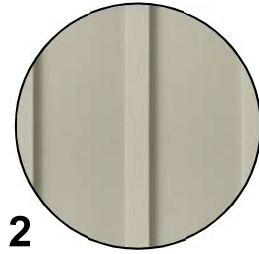
WILDPINE DEVELOPMENT MODEL 1



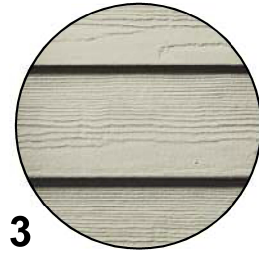
TOWNHOUSE EXTERIOR MATERIALS OPTION 2



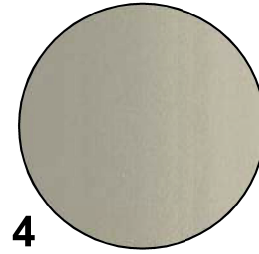
1
MASONRY - PERMACON
LAFITT STONE
COLOR RANGE
MARGAUX BEIGE



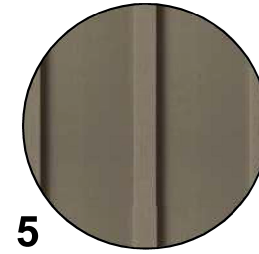
2
VERTICAL BOARD & BATTEN SIDING
JAMESHARDIE
SMOOTH COLOR
COBBLE STONE



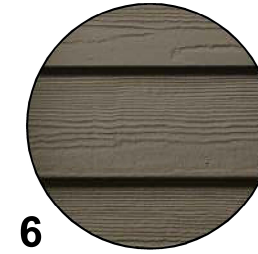
3
HORIZONTAL LAP SIDING
JAMESHARDIE
CEDARMILL COLOR
COBBLE STONE



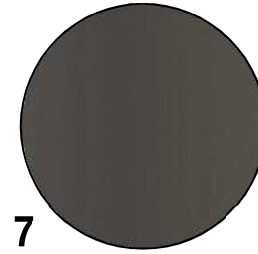
4
TRIM & ACCESSORIES
JAMESHARDIE
SMOOTH COLOR
COBBLE STONE



5
VERTICAL BOARD & BATTEN SIDING
JAMESHARDIE
SMOOTH COLOR
TIMBER BARK



6
HORIZONTAL LAP SIDING
JAMESHARDIE
CEDARMILL COLOR
TIMBER BARK



7
TRIM & ACCESSORIES
JAMESHARDIE
SMOOTH COLOR
RICH ESPRESSO



FRONT ELEVATION
SCALE 1:150

TOWNHOUSE CD 7 UNITS

WILDPINE DEVELOPMENT

37 WILDPINE COURT, STITTSVILLE

PROJECT
21010

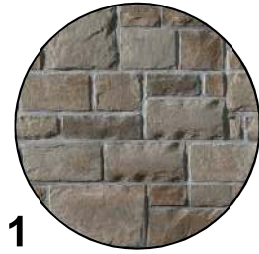
2021.08.25



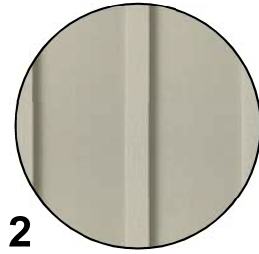
DRAWN : FLORENCE POMERLEAU
DESIGNED : PIERRE MARTIN
CHECKED : PASCAL POMERLEAU



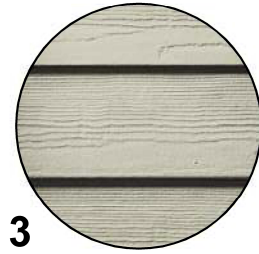
TOWNHOUSE EXTERIOR MATERIALS OPTION 2



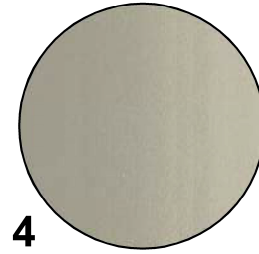
1
MASONRY - PERMACON
LAFITT STONE
COLOR RANGE
MARGAUX BEIGE



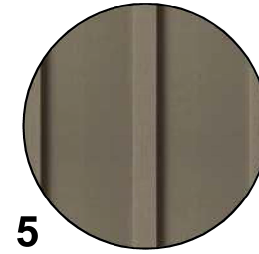
2
VERTICAL BOARD & BATTEN SIDING
JAMESHARDIE
SMOOTH COLOR
COBBLE STONE



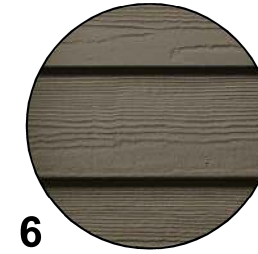
3
HORIZONTAL LAP SIDING
JAMESHARDIE
CEDARMILL COLOR
COBBLE STONE



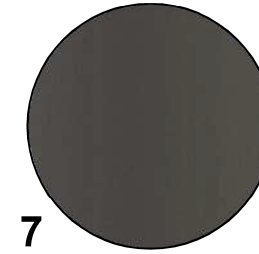
4
TRIM & ACCESSORIES
JAMESHARDIE
SMOOTH COLOR
COBBLE STONE



5
VERTICAL BOARD & BATTEN SIDING
JAMESHARDIE
SMOOTH COLOR
TIMBER BARK

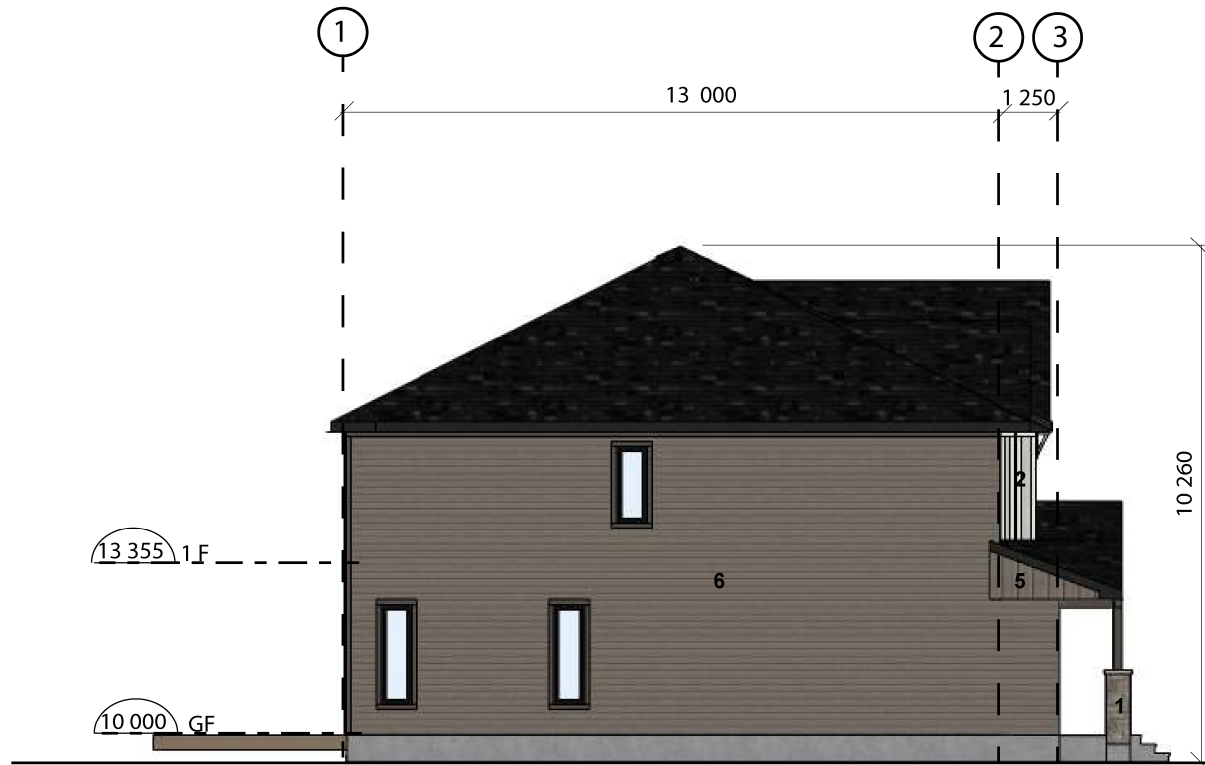


6
HORIZONTAL LAP SIDING
JAMESHARDIE
CEDARMILL COLOR
TIMBER BARK

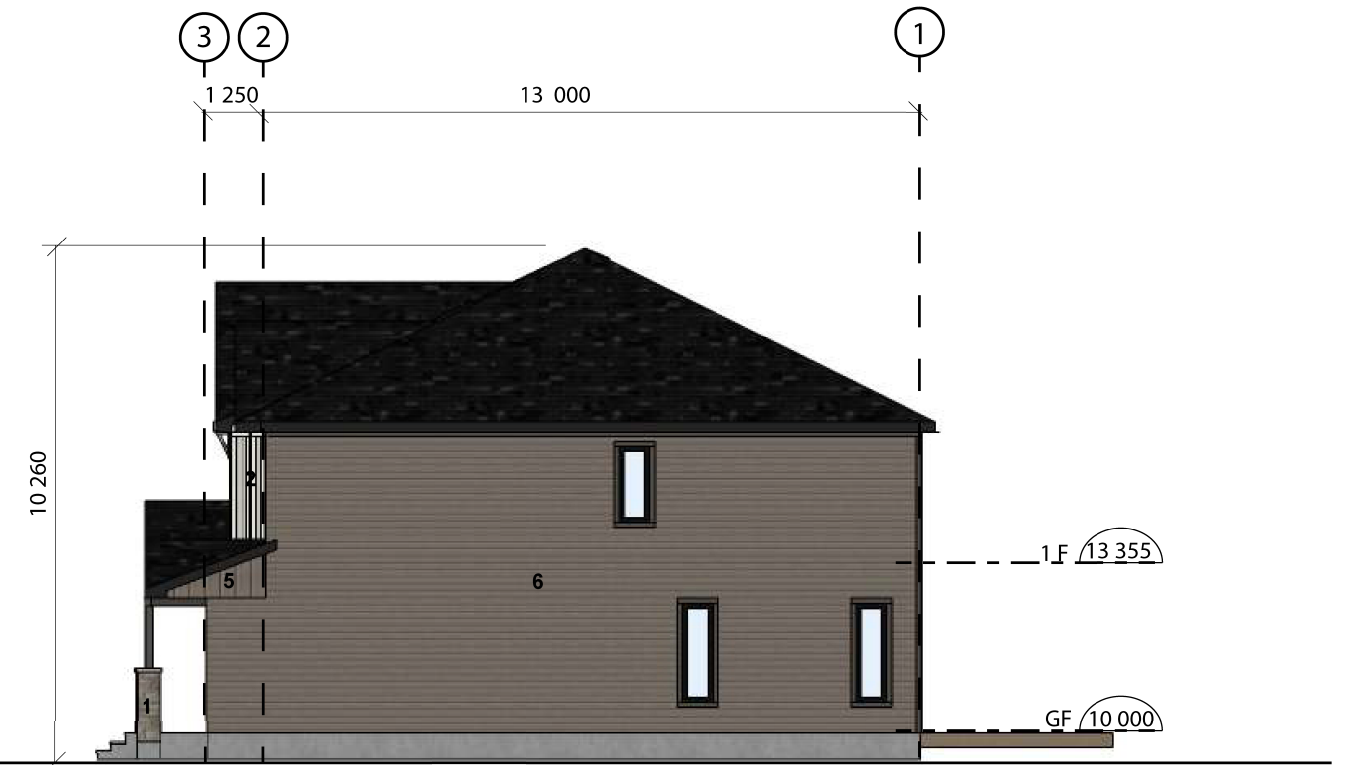


7
TRIM & ACCESSORIES
JAMESHARDIE
SMOOTH COLOR
RICH ESPRESSO

TOWNHOUSE CD 7 UNITS



LEFT SIDE ELEVATION
SCALE 1:150



RIGHT SIDE ELEVATION
SCALE 1:150

WILDPINE DEVELOPMENT

37 WILDPINE COURT, STITTSVILLE

PROJECT
21010

2021.08.25



53 Boul. St-Raymond, Suite 200



(418) 651-8954
INFO@PMAARCHITECTES.COM

3070, CHEMIN DES QUATRE-BOURGEOIS
QUÉBEC (QC) G1W 2K4
PMAARCHITECTES.COM

DRAWN : FLORENCE POMERLEAU

DESIGNED : PIERRE MARTIN

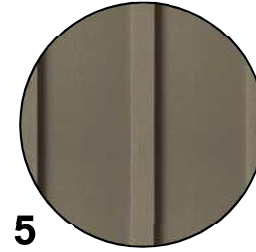
CHECKED : PASCAL POMERLEAU



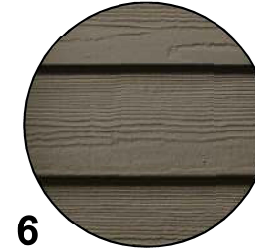
TOWNHOUSE EXTERIOR MATERIALS OPTION 2



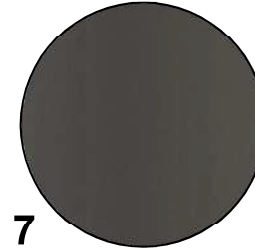
1
MASONRY - PERMACON
LAFITT STONE
COLOR RANGE
MARGAUX BEIGE



5
VERTICAL BOARD & BATTEN SIDING
JAMESHARDIE
SMOOTH COLOR
TIMBER BARK



6
HORIZONTAL LAP SIDING
JAMESHARDIE
CEDARMILL COLOR
TIMBER BARK



7
TRIM & ACCESSORIES
JAMESHARDIE
SMOOTH COLOR
RICH ESPRESSO



BACK ELEVATION
SCALE 1:150

TOWNHOUSE CD 7 UNITS

WILDPINE DEVELOPMENT

37 WILDPINE COURT, STITTSVILLE

PROJECT
21010

2021.08.25



DRAWN : FLORENCE POMERLEAU
DESIGNED : PIERRE MARTIN
CHECKED : PASCAL POMERLEAU



WILDPINE DEVELOPMENT MODEL 2



WILDPINE DEVELOPMENT

37 WILDPINE COURT, STITTSVILLE

PROJECT
21010

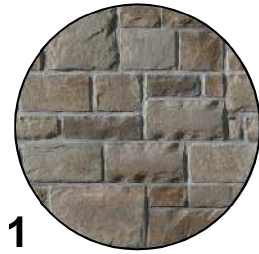
2021.08.25



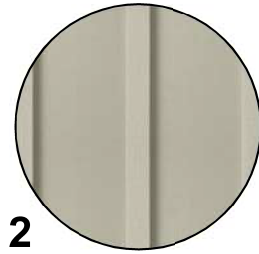
DRAWN : FLORENCE POMERLEAU
DESIGNED : PIERRE MARTIN
CHECKED : PASCAL POMERLEAU



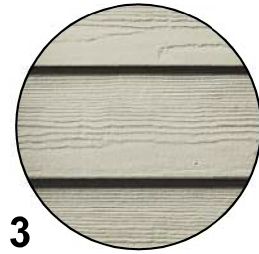
TOWNHOUSE EXTERIOR MATERIALS OPTION 2



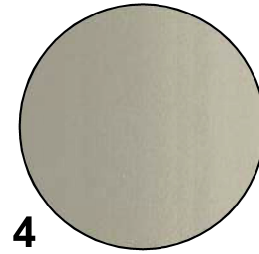
1
MASONRY - PERMACON
LAFITT STONE
COLOR RANGE
MARGAUX BEIGE



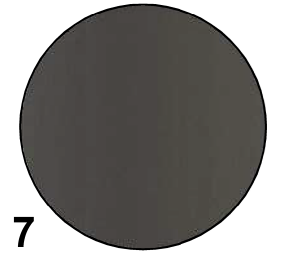
2
VERTICAL BOARD & BATTEN SIDING
JAMESHARDIE
SMOOTH COLOR
COBBLE STONE



3
HORIZONTAL LAP SIDING
JAMESHARDIE
CEDARMILL COLOR
COBBLE STONE



4
TRIM & ACCESSORIES
JAMESHARDIE
SMOOTH COLOR
COBBLE STONE

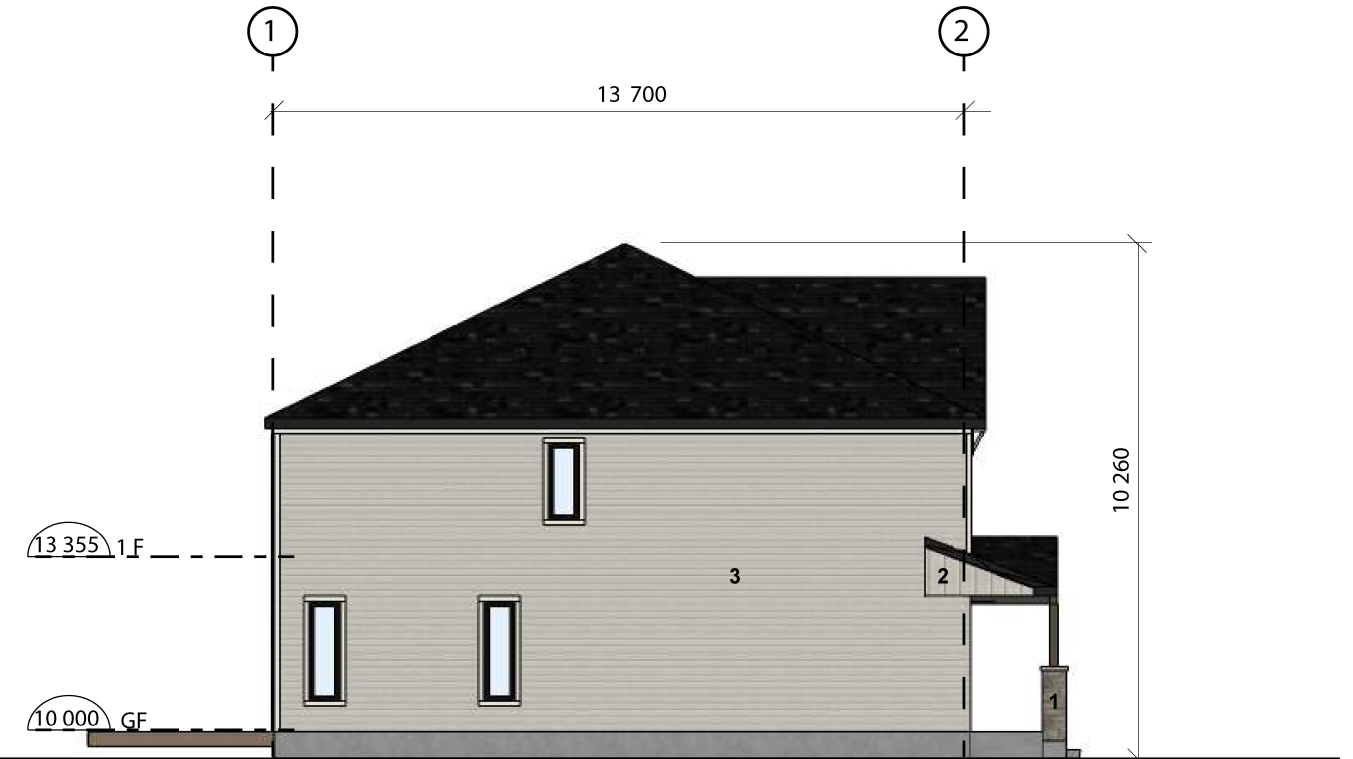


7
TRIM & ACCESSORIES
JAMESHARDIE
SMOOTH COLOR
RICH ESPRESSO

TOWNHOUSE DD 2 UNITS



FRONT ELEVATION
SCALE 1:150



LEFT SIDE ELEVATION
SCALE 1:150



53 Boul. St-Raymond, Suite 200



(418) 651-8954
INFO@PMAARCHITECTES.COM
3070, CHEMIN DES QUATRE-BOURGEOIS
QUÉBEC (QC) G1W 2K4
PMAARCHITECTES.COM

DRAWN : FLORENCE POMERLEAU
DESIGNED : PIERRE MARTIN
CHECKED : PASCAL POMERLEAU



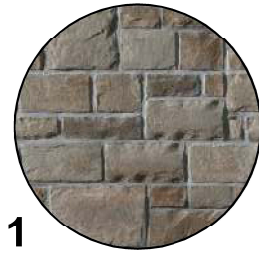
WILDPINE DEVELOPMENT

37 WILDPINE COURT, STITTSVILLE

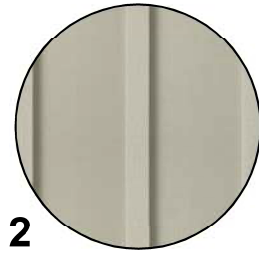
PROJECT
21010

2021.08.25

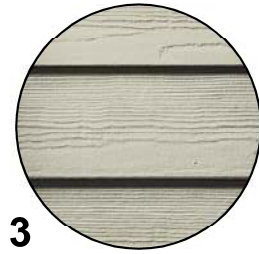
TOWNHOUSE EXTERIOR MATERIALS OPTION 2



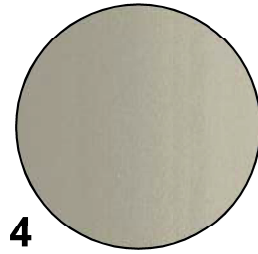
1
MASONRY - PERMACON
LAFITT STONE
COLOR RANGE
MARGAUX BEIGE



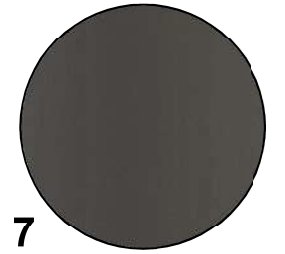
2
VERTICAL BOARD & BATTEN SIDING
JAMESHARDIE
SMOOTH COLOR
COBBLE STONE



3
HORIZONTAL LAP SIDING
JAMESHARDIE
CEDARMILL COLOR
COBBLE STONE

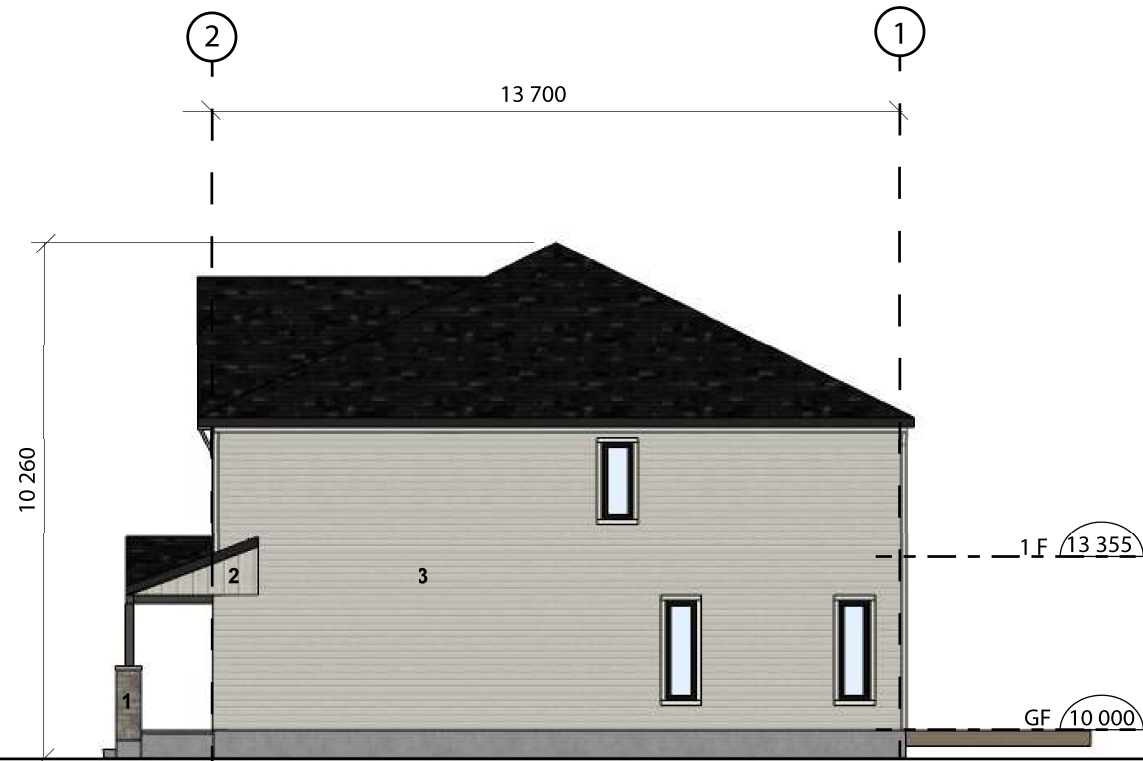


4
TRIM & ACCESSORIES
JAMESHARDIE
SMOOTH COLOR
COBBLE STONE

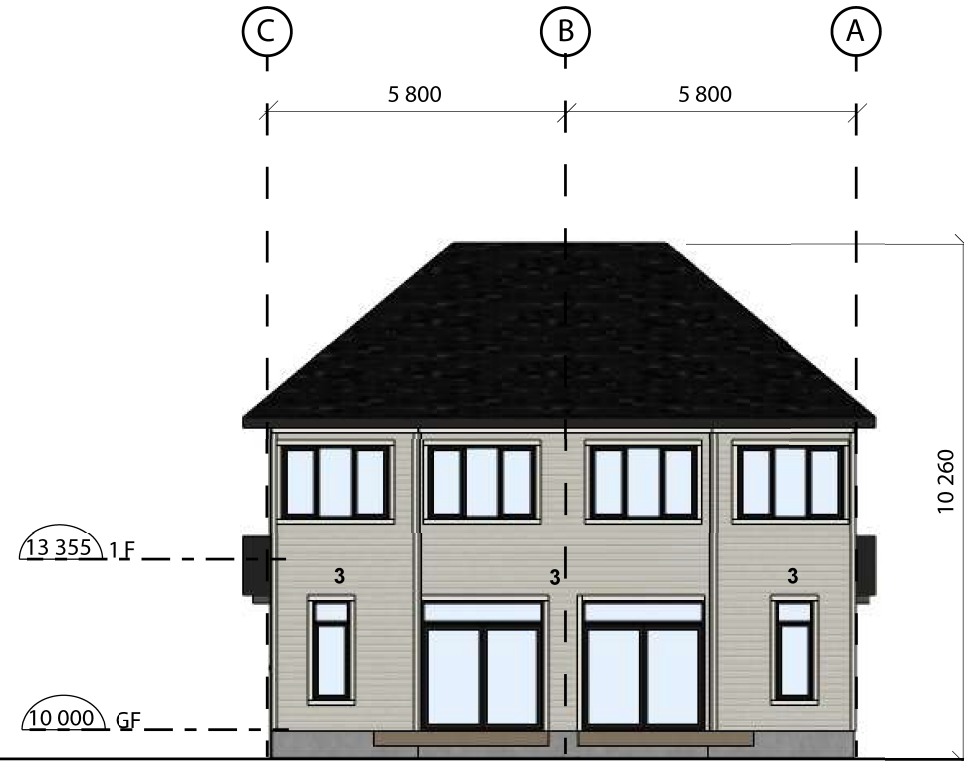


7
TRIM & ACCESSORIES
JAMESHARDIE
SMOOTH COLOR
RICH ESPRESSO

TOWNHOUSE DD 2 UNITS



RIGHT SIDE ELEVATION
SCALE 1:150



BACK ELEVATION
SCALE 1:150



53 Boul. St-Raymond, Suite 200



(418) 651-8954
INFO@PMAARCHITECTES.COM

3070, CHEMIN DES QUATRE-BOURGEOIS
QUÉBEC (QC) G1W 2K4
PMAARCHITECTES.COM

DRAWN : FLORENCE POMERLEAU
DESIGNED : PIERRE MARTIN
CHECKED : PASCAL POMERLEAU



WILDPINE DEVELOPMENT

37 WILDPINE COURT, STITTSVILLE

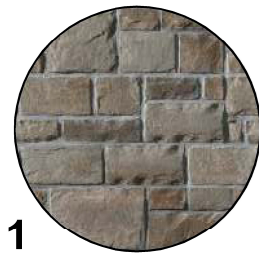
PROJECT
21010

2021.08.25

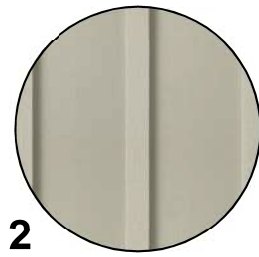
WILDPINE DEVELOPMENT MODEL 3



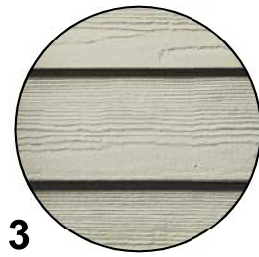
TOWNHOUSE EXTERIOR MATERIALS OPTION 2



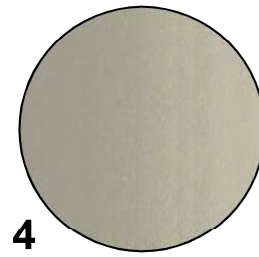
1
MASONRY - PERMACON
LAFITT STONE
COLOR RANGE
MARGAUX BEIGE



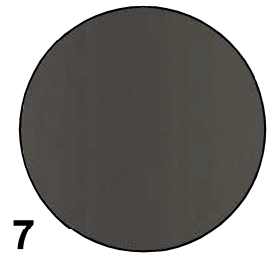
2
VERTICAL BOARD & BATTEN SIDING
JAMESHARDIE
SMOOTH COLOR
COBBLE STONE



3
HORIZONTAL LAP SIDING
JAMESHARDIE
CEDARMILL COLOR
COBBLE STONE



4
TRIM & ACCESSORIES
JAMESHARDIE
SMOOTH COLOR
COBBLE STONE



7
TRIM & ACCESSORIES
JAMESHARDIE
SMOOTH COLOR
RICH ESPRESSO



FRONT ELEVATION
SCALE 1:150

TOWNHOUSE DD 7 UNITS

WILDPINE DEVELOPMENT

37 WILDPINE COURT, STITTSVILLE

PROJECT
21010

2021.08.25



53 Boul. St-Raymond, Suite 200



(418) 651-8954
INFO@PMAARCHITECTES.COM

3070, CHEMIN DES QUATRE-BOURGEOIS
QUÉBEC (QC) G1W 2K4
PMAARCHITECTES.COM

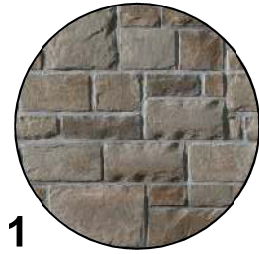
DRAWN : FLORENCE POMERLEAU

DESIGNED : PIERRE MARTIN

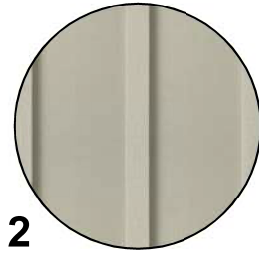
CHECKED : PASCAL POMERLEAU



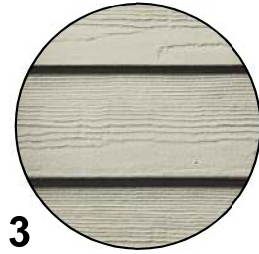
TOWNHOUSE EXTERIOR MATERIALS OPTION 2



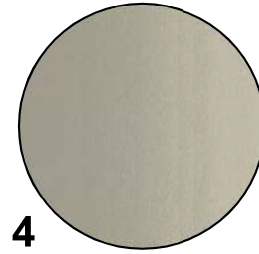
1
MASONRY - PERMACON
LAFITT STONE
COLOR RANGE
MARGAUX BEIGE



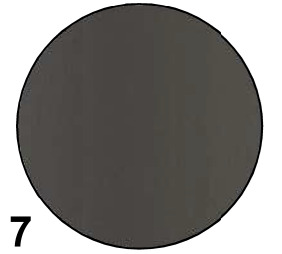
2
VERTICAL BOARD & BATTEN SIDING
JAMESHARDIE
SMOOTH COLOR
COBBLE STONE



3
HORIZONTAL LAP SIDING
JAMESHARDIE
CEDARMILL COLOR
COBBLE STONE

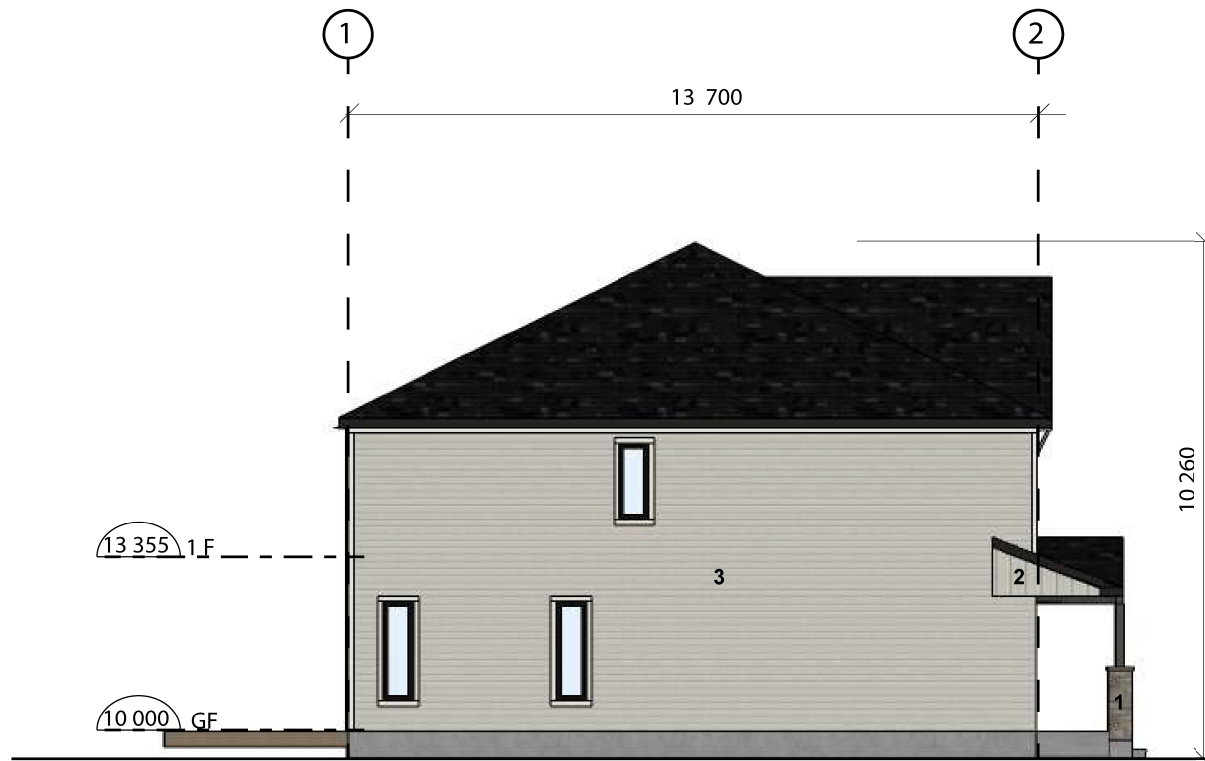


4
TRIM & ACCESSORIES
JAMESHARDIE
SMOOTH COLOR
COBBLE STONE

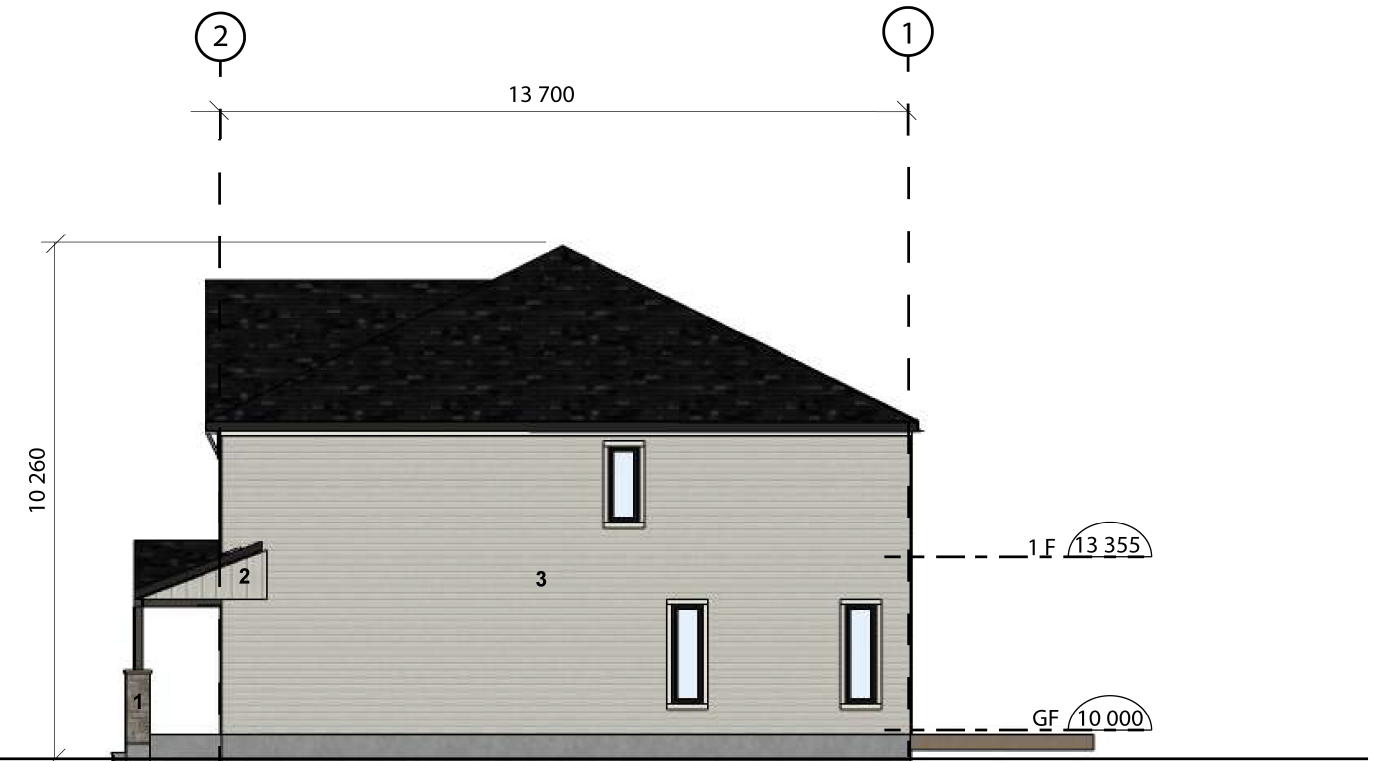


7
TRIM & ACCESSORIES
JAMESHARDIE
SMOOTH COLOR
RICH ESPRESSO

TOWNHOUSE DD 7 UNITS



LEFT SIDE ELEVATION
SCALE 1:150



RIGHT SIDE ELEVATION
SCALE 1:150



DRAWN : FLORENCE POMERLEAU
DESIGNED : PIERRE MARTIN
CHECKED : PASCAL POMERLEAU



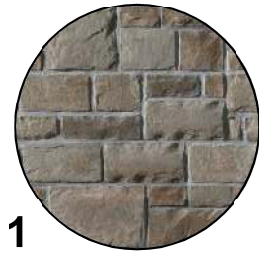
WILDPINE DEVELOPMENT

37 WILDPINE COURT, STITTSVILLE

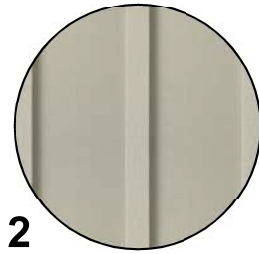
PROJECT
21010

2021.08.25

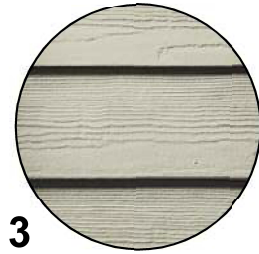
TOWNHOUSE EXTERIOR MATERIALS OPTION 2



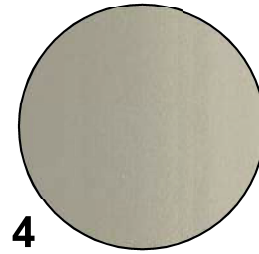
1
MASONRY - PERMACON
LAFITT STONE
COLOR RANGE
MARGAUX BEIGE



2
VERTICAL BOARD & BATTEN SIDING
JAMESHARDIE
SMOOTH COLOR
COBBLE STONE



3
HORIZONTAL LAP SIDING
JAMESHARDIE
CEDARMILL COLOR
COBBLE STONE



4
TRIM & ACCESSORIES
JAMESHARDIE
SMOOTH COLOR
COBBLE STONE



BACK ELEVATION
SCALE 1:150

TOWNHOUSE DD 7 UNITS

WILDPINE DEVELOPMENT

37 WILDPINE COURT, STITTSVILLE

PROJECT
21010

2021.08.25



53 Boul. St-Raymond, Suite 200



(418) 651-8954
INFO@PMAARCHITECTES.COM

3070, CHEMIN DES QUATRE-BOURGEOIS
QUÉBEC (QC) G1W 2K4
PMAARCHITECTES.COM

DRAWN : FLORENCE POMERLEAU

DESIGNED : PIERRE MARTIN

CHECKED : PASCAL POMERLEAU



WILDPINE DEVELOPMENT MODEL 4



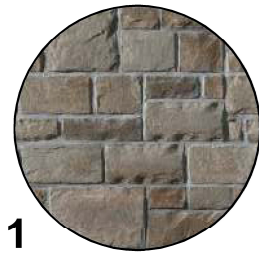
WILDPINE DEVELOPMENT

37 WILDPINE COURT, STITTSVILLE

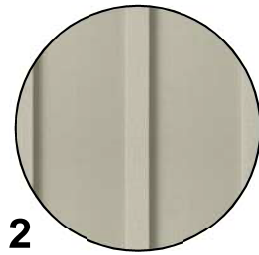
PROJECT
21010

2021.08.25

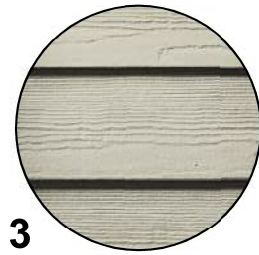
TOWNHOUSE EXTERIOR MATERIALS OPTION 2



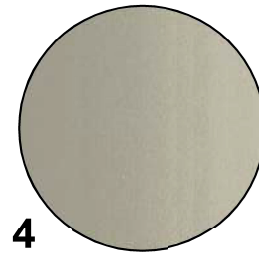
1
MASONRY - PERMACON
LAFITT STONE
COLOR RANGE
MARGAUX BEIGE



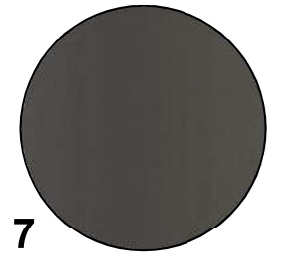
2
VERTICAL BOARD & BATTEN SIDING
JAMESHARDIE
SMOOTH COLOR
COBBLE STONE



3
HORIZONTAL LAP SIDING
JAMESHARDIE
CEDARMILL COLOR
COBBLE STONE



4
TRIM & ACCESSORIES
JAMESHARDIE
SMOOTH COLOR
COBBLE STONE

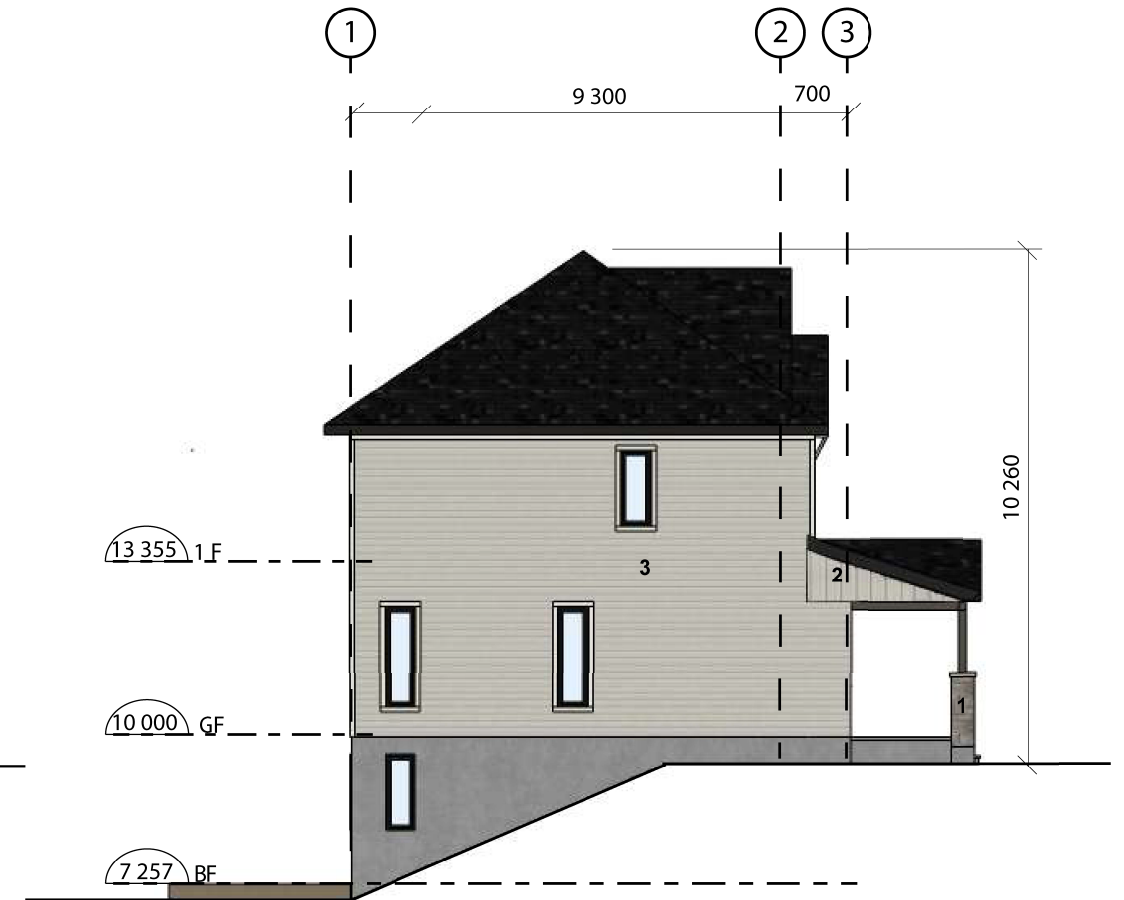


7
TRIM & ACCESSORIES
JAMESHARDIE
SMOOTH COLOR
RICH ESPRESSO

TOWNHOUSE EE 5 UNITS



FRONT ELEVATION
SCALE 1:150



LEFT SIDE ELEVATION
SCALE 1:150

WILDPINE DEVELOPMENT

37 WILDPINE COURT, STITTSVILLE

PROJECT
21010

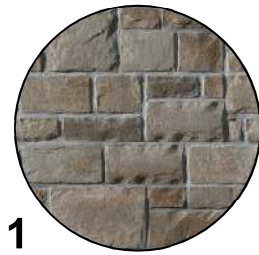
2021.08.25



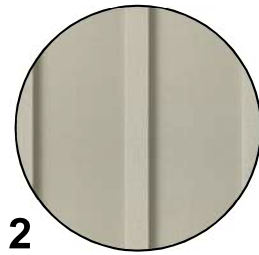
DRAWN : FLORENCE POMERLEAU
DESIGNED : PIERRE MARTIN
CHECKED : PASCAL POMERLEAU



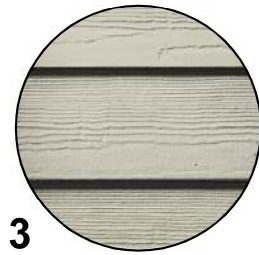
TOWNHOUSE EXTERIOR MATERIALS OPTION 2



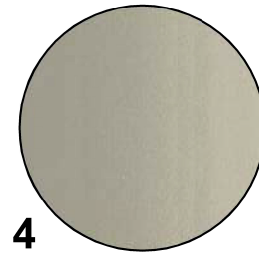
1
MASONRY - PERMACON
LAFITT STONE
COLOR RANGE
MARGAUX BEIGE



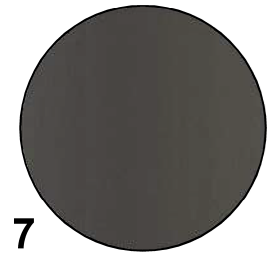
2
VERTICAL BOARD & BATTEN SIDING
JAMESHARDIE
SMOOTH COLOR
COBBLE STONE



3
HORIZONTAL LAP SIDING
JAMESHARDIE
CEDARMILL COLOR
COBBLE STONE

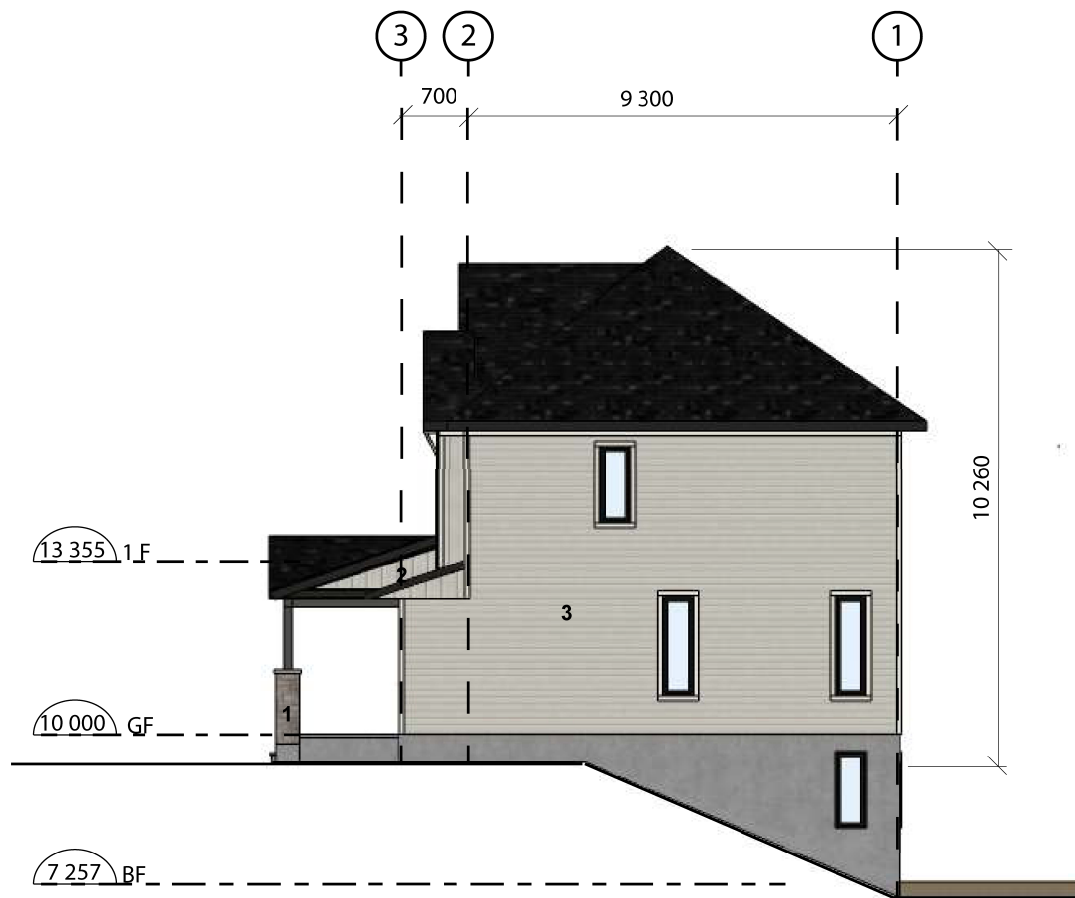


4
TRIM & ACCESSORIES
JAMESHARDIE
SMOOTH COLOR
COBBLE STONE



7
TRIM & ACCESSORIES
JAMESHARDIE
SMOOTH COLOR
RICH ESPRESSO

TOWNHOUSE EE 5 UNITS



RIGHT SIDE ELEVATION
SCALE 1:150



BACK ELEVATION
SCALE 1:150

WILDPINE DEVELOPMENT

37 WILDPINE COURT, STITTSVILLE

PROJECT
21010

2021.08.25



53 Boul. St-Raymond, Suite 200



(418) 651-8954
INFO@PMAARCHITECTES.COM

3070, CHEMIN DES QUATRE-BOURGEOIS
QUÉBEC (QC) G1W 2K4
PMAARCHITECTES.COM

DRAWN : FLORENCE POMERLEAU

DESIGNED : PIERRE MARTIN

CHECKED : PASCAL POMERLEAU



WILDPINE DEVELOPMENT MODEL 5



WILDPINE DEVELOPMENT

37 WILDPINE COURT, STITTSVILLE

PROJECT
21010

2021.08.25



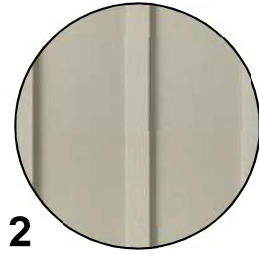
DRAWN : FLORENCE POMERLEAU
DESIGNED : PIERRE MARTIN
CHECKED : PASCAL POMERLEAU



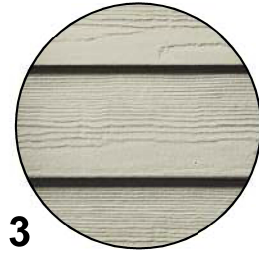
TOWNHOUSE EXTERIOR MATERIALS OPTION 2



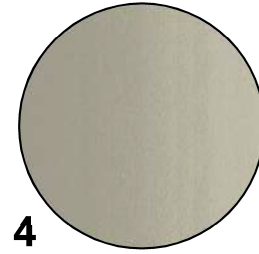
1
MASONRY - PERMACON
LAFITT STONE
COLOR RANGE
MARGAUX BEIGE



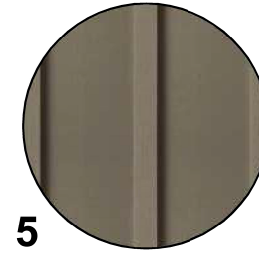
2
VERTICAL BOARD & BATTEN SIDING
JAMESHARDIE
SMOOTH COLOR
COBBLE STONE



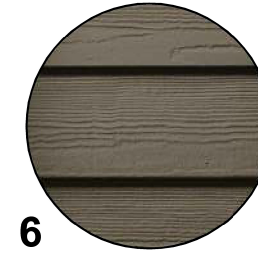
3
HORIZONTAL LAP SIDING
JAMESHARDIE
CEDARMILL COLOR
COBBLE STONE



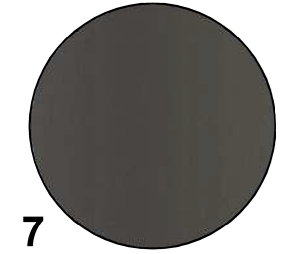
4
TRIM & ACCESSORIES
JAMESHARDIE
SMOOTH COLOR
COBBLE STONE



5
VERTICAL BOARD & BATTEN SIDING
JAMESHARDIE
SMOOTH COLOR
TIMBER BARK



6
HORIZONTAL LAP SIDING
JAMESHARDIE
CEDARMILL COLOR
TIMBER BARK



7
TRIM & ACCESSORIES
JAMESHARDIE
SMOOTH COLOR
RICH ESPRESSO



TOWNHOUSE EE 8 UNITS

FRONT ELEVATION
SCALE 1:150

WILDPINE DEVELOPMENT

37 WILDPINE COURT, STITTSVILLE

PROJECT
21010

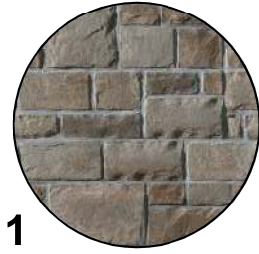
2021.08.25



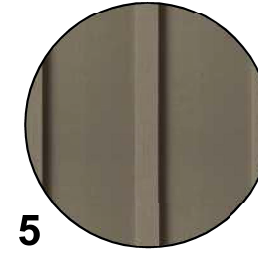
DRAWN : FLORENCE POMERLEAU
DESIGNED : PIERRE MARTIN
CHECKED : PASCAL POMERLEAU



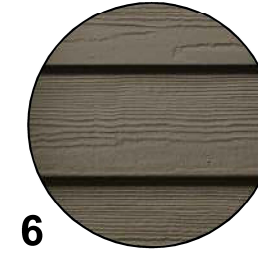
TOWNHOUSE EXTERIOR MATERIALS OPTION 2



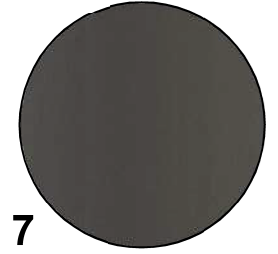
1
MASONRY - PERMACON
LAFITT STONE
COLOR RANGE
MARGAUX BEIGE



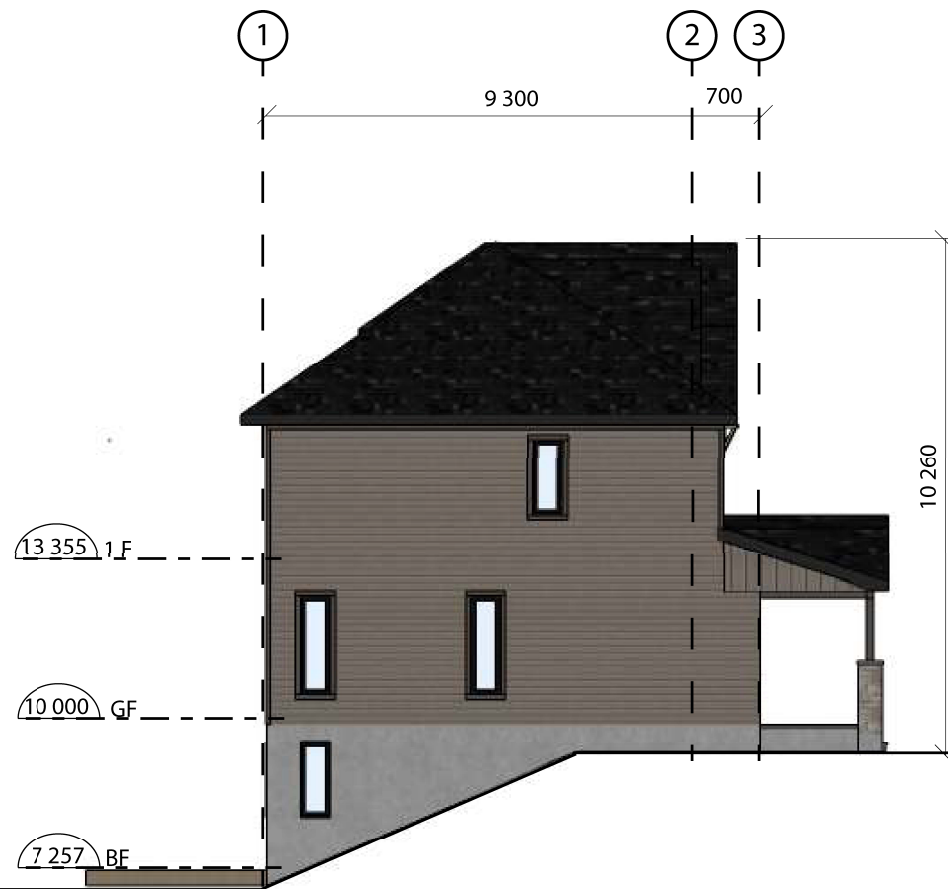
5
VERTICAL BOARD & BATTEN SIDING
JAMESHARDIE
SMOOTH COLOR
TIMBER BARK



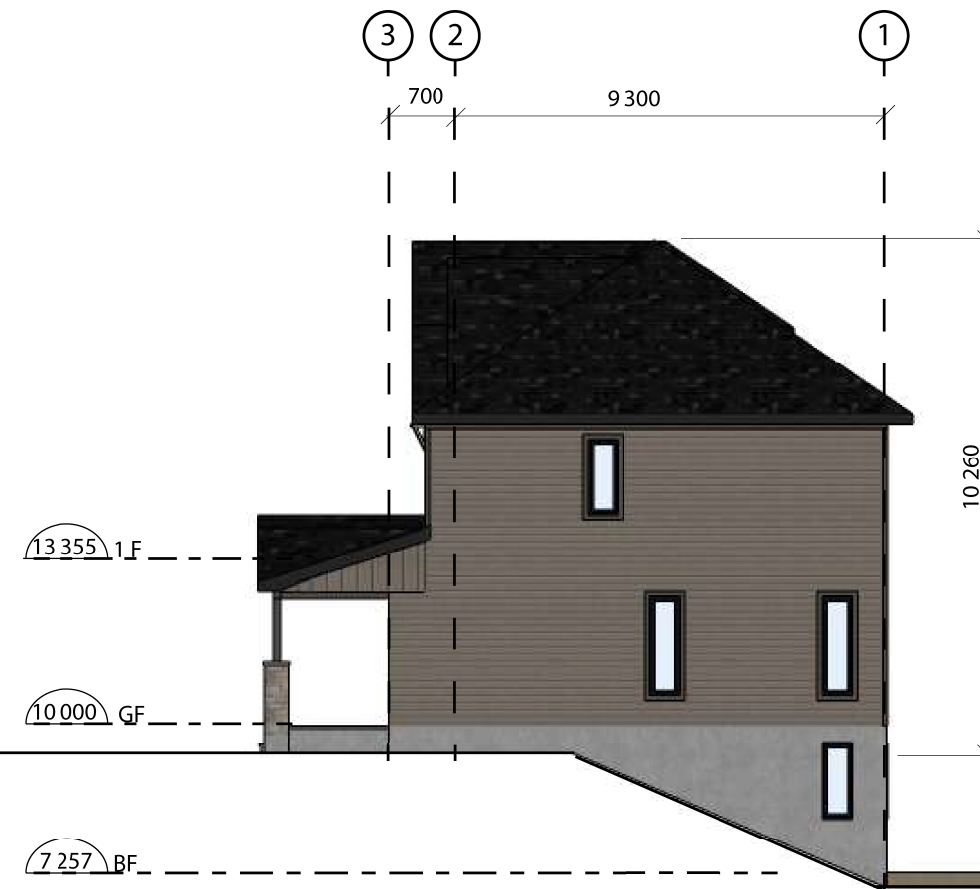
6
HORIZONTAL LAP SIDING
JAMESHARDIE
CEDARMILL COLOR
TIMBER BARK



7
TRIM & ACCESSORIES
JAMESHARDIE
SMOOTH COLOR
RICH ESPRESSO



LEFT SIDE ELEVATION
SCALE 1:150



RIGHT SIDE ELEVATION
SCALE 1:150

TOWNHOUSE EE 8 UNITS

WILDPINE DEVELOPMENT

37 WILDPINE COURT, STITTSVILLE

PROJECT
21010

2021.08.25



53 Boul. St-Raymond, Suite 200



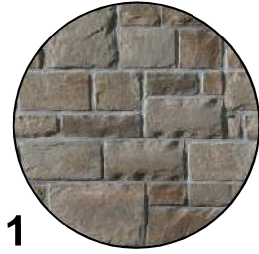
(418) 651-8954
INFO@PMAARCHITECTES.COM

3070, CHEMIN DES QUATRE-BOURGEOIS
QUÉBEC (QC) G1W 2K4
PMAARCHITECTES.COM

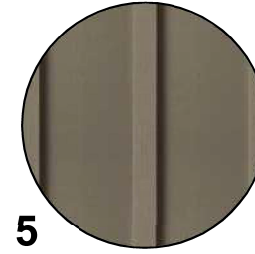
DRAWN : FLORENCE POMERLEAU
DESIGNED : PIERRE MARTIN
CHECKED : PASCAL POMERLEAU



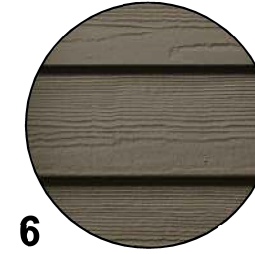
TOWNHOUSE EXTERIOR MATERIALS OPTION 2



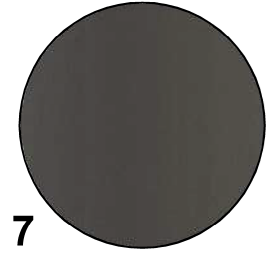
1
MASONRY - PERMACON
LAFITT STONE
COLOR RANGE
MARGAUX BEIGE



5
VERTICAL BOARD & BATTEN SIDING
JAMESHARDIE
SMOOTH COLOR
TIMBER BARK



6
HORIZONTAL LAP SIDING
JAMESHARDIE
CEDARMILL COLOR
TIMBER BARK



7
TRIM & ACCESSORIES
JAMESHARDIE
SMOOTH COLOR
RICH ESPRESSO

TOWNHOUSE EE 8 UNITS



BACK ELEVATION
SCALE 1:150

WILDPINE DEVELOPMENT

37 WILDPINE COURT, STITTSVILLE

PROJECT
21010

2021.08.25



53 Boul. St-Raymond, Suite 200



(418) 651-8954
INFO@PMAARCHITECTES.COM

3070, CHEMIN DES QUATRE-BOURGEOIS
QUÉBEC (QC) G1W 2K4
PMAARCHITECTES.COM

DRAWN : FLORENCE POMERLEAU
DESIGNED : PIERRE MARTIN
CHECKED : PASCAL POMERLEAU

