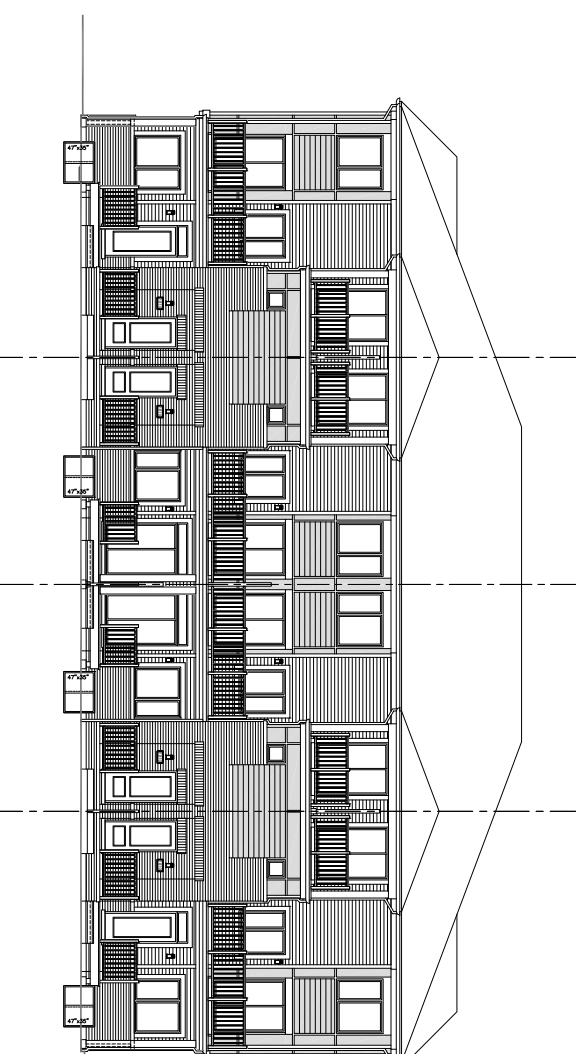


- 5A** **ASTC 'TN'** REV.
 8566 NIGHTSHADE
12B **ASTD 'TN'** REV.
 8572 POPPY
- 6A** **ASTA 'TN'** REV.
 8566 BUTTERCUP
11B **ASTB 'TN'** REV.
 8571 FOXGLOVE
- 7A** **ASTA 'TN'** REV.
 8567 BUTTERCUP
10B **ASTB 'TN'** REV.
 8570 FOXGLOVE
- 8A** **ASTC 'TN' UPG.** REV.
 8568 NIGHTSHADE
9B **ASTD 'TN' UPG.** REV.
 8569 POPPY

FRONT ELEVATION – SITE INTERIOR SIDE (EAST)



- 1A** **ASTC 'TN' UPG.** REV.
 8561 NIGHTSHADE
9B **ASTD 'TN' UPG.** REV.
 8569 POPPY
- 2A** **ASTA 'TN'** REV.
 8562 BUTTERCUP
10B **ASTB 'TN'** REV.
 8570 FOXGLOVE
- 3A** **ASTA 'TN'** REV.
 8563 BUTTERCUP
11B **ASTB 'TN'** REV.
 8571 FOXGLOVE
- 4A** **ASTC 'TN'** REV.
 8564 NIGHTSHADE
12B **ASTD 'TN'** REV.
 8572 POPPY

REAR ELEVATION – STREET SIDE (WEST)

(LOCATION AND NUMBER OF HYDRO & GAS METERS TO BE VERIFIED AND CONFIRMED PRIOR TO CONSTRUCTION)

Specifications, terms and conditions are subject to change without notice. Note that plans and room dimensions may vary according to elevation. Plan may be built as the mirror image. "Quiet wall" (where shown) means a wall in which additional insulation has been installed. This will assist in reducing, but not eliminating, ambient sound from adjoining rooms and mechanical systems. The extent of the reduction will vary depending upon various factors including, without limitation, the presence and extent of mechanical systems located in the wall. Drawing is not to scale and all dimensions are approximate. Actual usable floor space may vary from the stated floor area. E.&O.E. Copyright 2012 – Mattamy Homes Limited. September 26, 2018



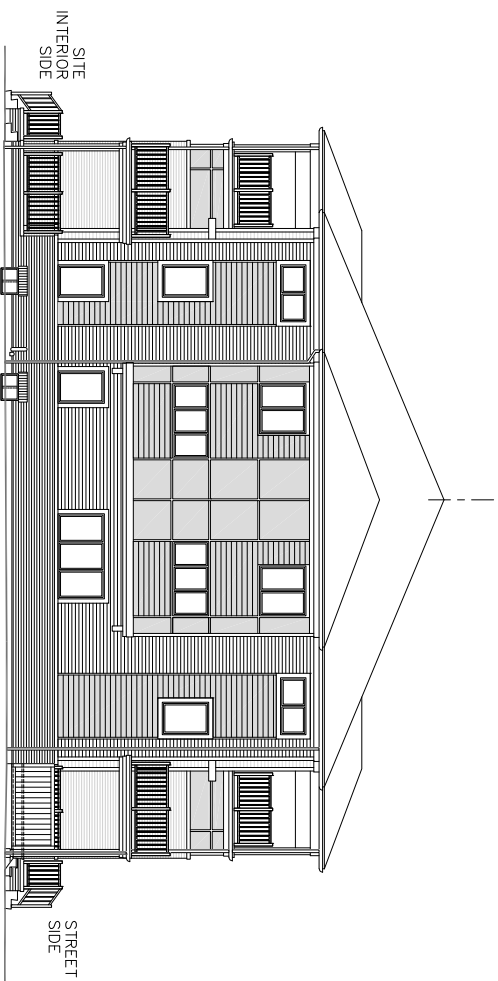
Block Plan
6

Phase: Lot No:

8

Initials:

Date:

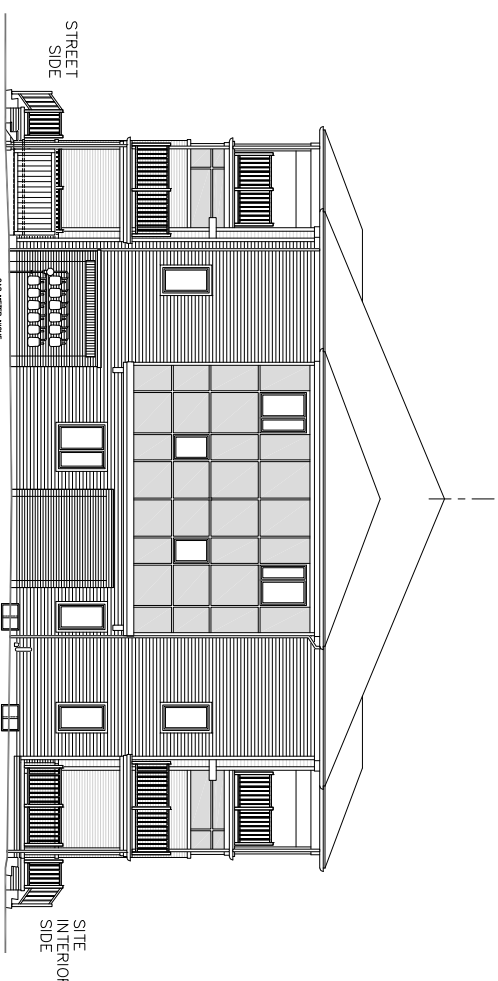


8A ASTC 'TN' UPG.
NIGHTSHADE
REV.
8568

9B ASTD 'TN' UPG.
POPPY
REV.
8569

1A ASTC 'TN' UPG.
NIGHTSHADE
REV.
8561

RIGHT SIDE ELEVATION (NORTH)



4A ASTC 'TN'
NIGHTSHADE
REV.
8564

12B ASTD 'TN'
POPPY
REV.
8572

5A ASTC 'TN'
NIGHTSHADE
REV.
8565

LEFT SIDE ELEVATION (SOUTH)

(LOCATION AND NUMBER OF HYDRO & GAS METERS TO BE VERIFIED AND CONFIRMED PRIOR TO CONSTRUCTION)

Specifications, terms and conditions are subject to change without notice. Note that plans and room dimensions may vary according to elevation. Plan may be built as the mirror image. "Quiet wall" (where shown) means a wall in which additional insulation has been installed. This will assist in reducing, but not eliminating, ambient sound from adjoining rooms and mechanical systems. The extent of the reduction will vary depending upon various factors including, without limitation, the presence and extent of mechanical systems located in the wall. Drawing is not to scale and all dimensions are approximate. Actual usable floor space may vary from the stated floor area. E.&O.E. Copyright 2012 – Mattamy Homes Limited. **September 26, 2018**



Block Plan
6

Phase: Lot No:

8

Initials:

Date: