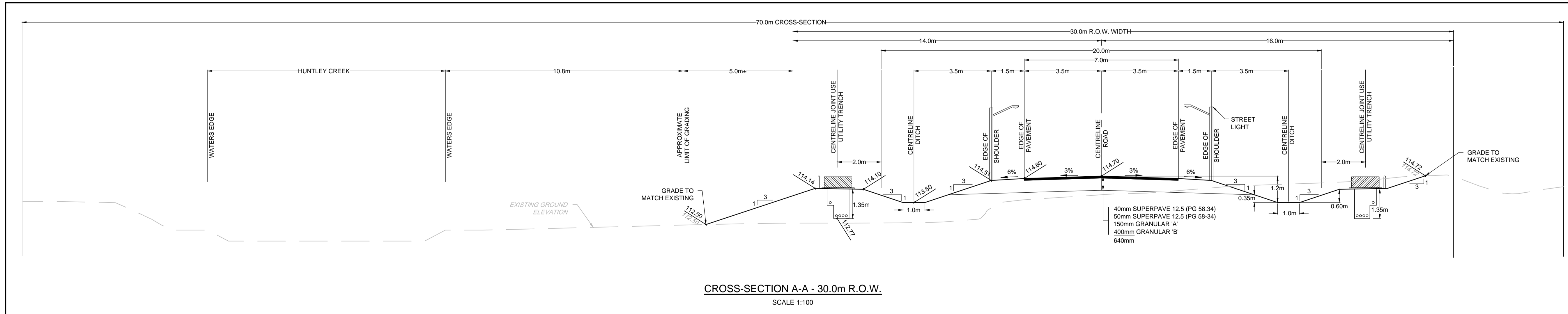
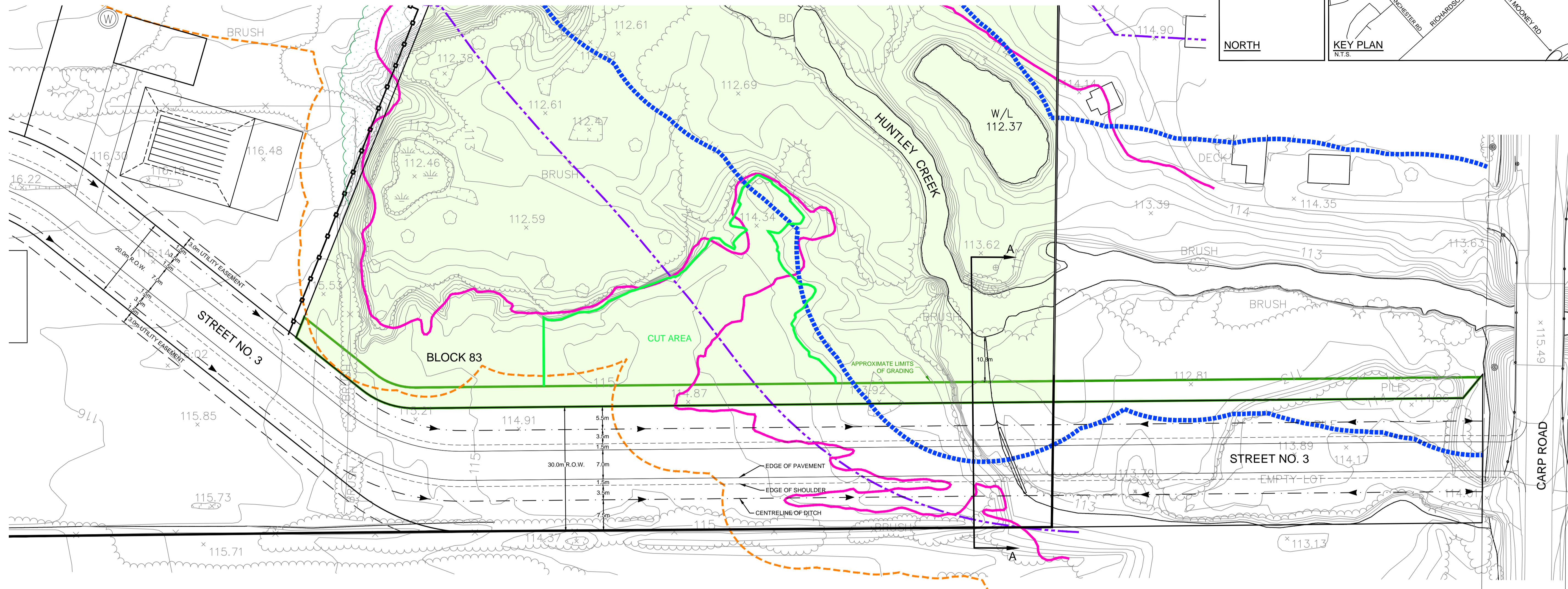
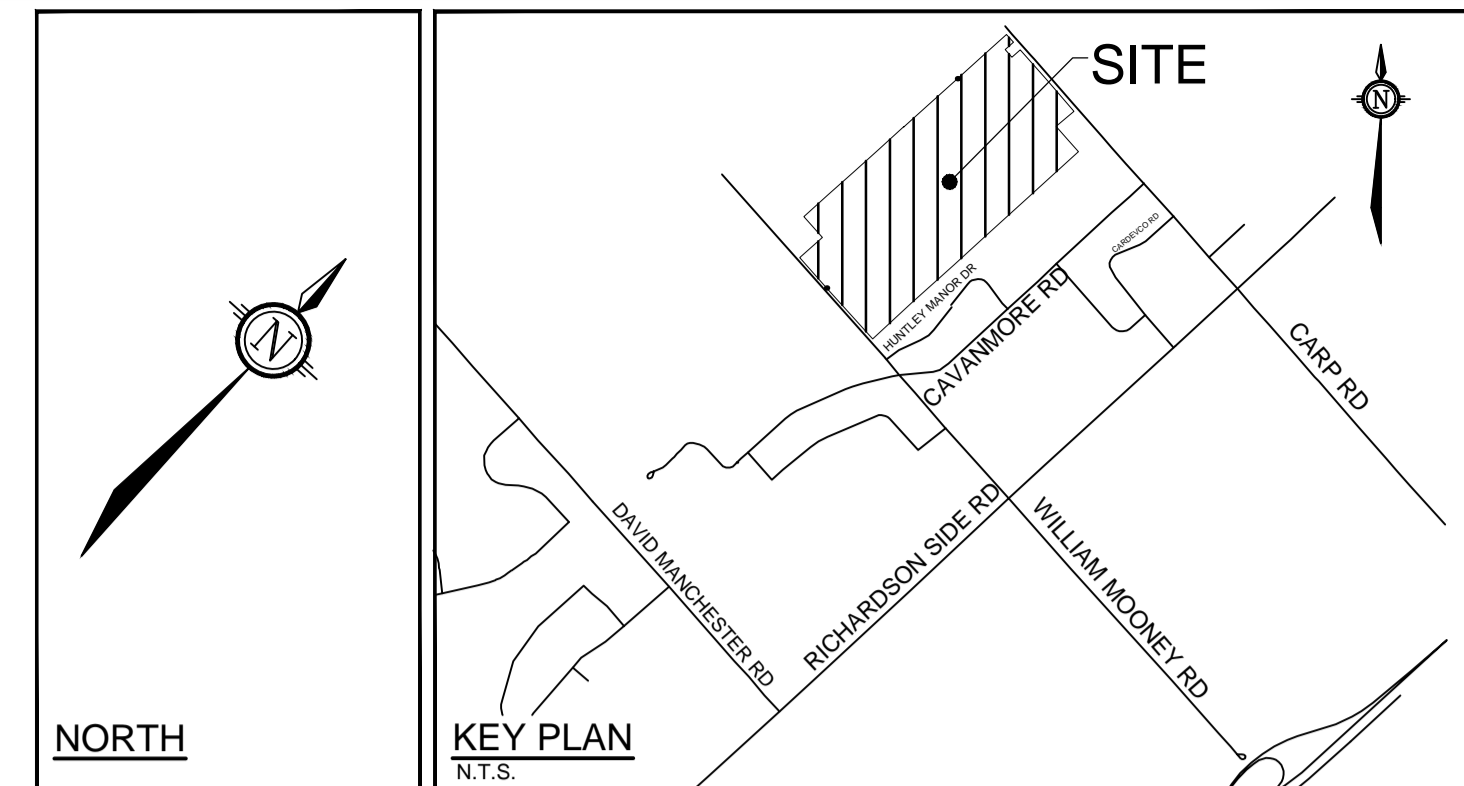


LEGEND

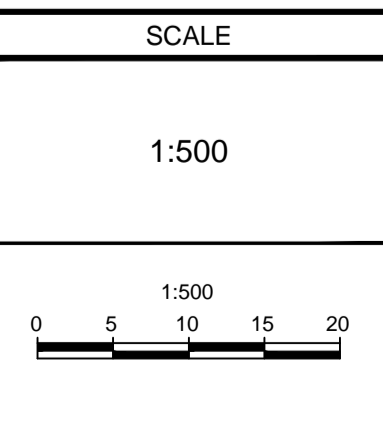
- - - - - 30m SETBACK LINE (FROM NHWM)
- - - - - MEANDER BELT (PROVIDED BY MVCA)
- - - - - 1:100 YR FLOODPLAIN (PROVIDED BY MVCA)
- - - - - REGULATORY LIMIT (PROVIDED BY MVCA)
- - - - - APPROXIMATE AREA OF CUT
- - - - - APPROXIMATE LIMIT OF GRADING



CROSS-SECTION A-A - 30.0m R.O.W.
SCALE 1:100

NOTE:
THE POSITION OF ALL POLE LINES, CONDUITS, WATERMANS, SEWERS AND OTHER UNDERGROUND AND OVERGROUND UTILITIES AND STRUCTURES IS NOT NECESSARILY SHOWN ON THE CONTRACT DRAWINGS, AND WHERE SHOWN, THE ACCURACY OF THE POSITION OF SUCH UTILITIES AND STRUCTURES IS NOT GUARANTEED. BEFORE STARTING WORK, DETERMINE THE EXACT LOCATION OF ALL SUCH UTILITIES AND STRUCTURES AND ASSUME ALL LIABILITY FOR DAMAGE TO THEM.

No.	REVISION	DATE	BY
1.	ISSUED FOR COORDINATION	MAY 7/20	LKC



DESIGN	LAB
CHECKED	SMG
DRAWN	LKC
CHECKED	LAB
APPROVED	SMG

FOR REVIEW ONLY

NOVATECH
Engineers, Planners & Landscape Architects
Suite 200, 240 Michael Cowpland Drive
Ottawa, Ontario, Canada K2M 1P6
Telephone: (613) 254-9643
Facsimile: (613) 254-5867
Website: www.novatech-eng.com

LOCATION
CITY OF OTTAWA
2727 CARP ROAD
DRAWING NAME
**CROSS-SECTION A-A
30.0m RIGHT OF WAY**

PROJECT No.	100149-00
REV	REV # 1
DRAWING No.	100149-XSA

M:\2000\100149\CAD\DWG\NEW\DESIGN\CPL100149-TJS.dwg, XSA, May 07, 2020, 2:01pm, leedy