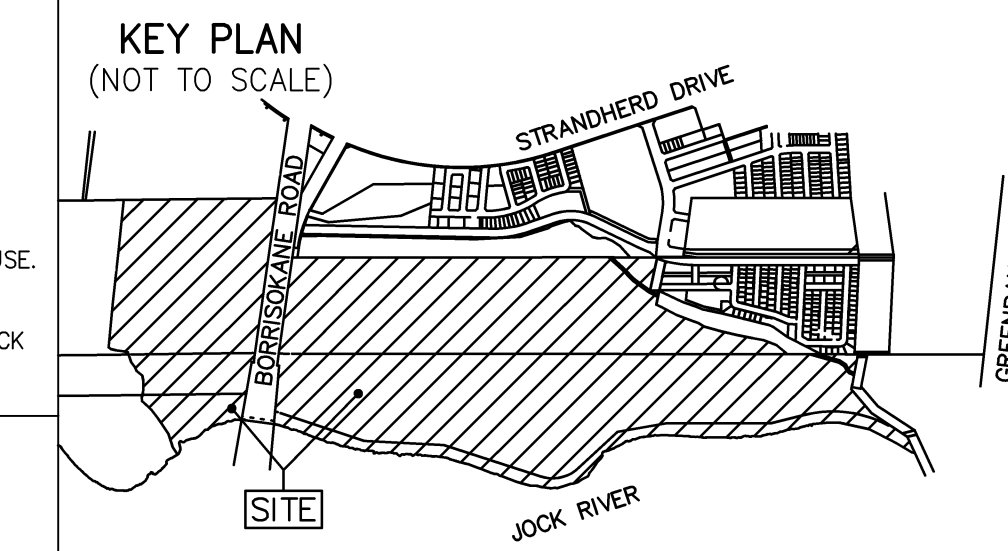


SUBJECT TO THE CONDITIONS, IF ANY, SET FORTH IN OUR LETTER DATED: THIS DRAFT PLAN IS APPROVED BY THE CITY OF OTTAWA UNDER SECTION 51 OF THE PLANNING ACT THIS DAY OF, 2020.

LILY XU, MCIIP, RPP, MANAGER
DEVELOPMENT REVIEW SOUTH
PLANNING, INFRASTRUCTURE AND ECONOMIC DEVELOPMENT DEPARTMENT,
CITY OF OTTAWA

ADDITIONAL INFORMATION AS REQUIRED UNDER SECTION 51(17) OF THE PLANNING ACT R.S.O. 2001

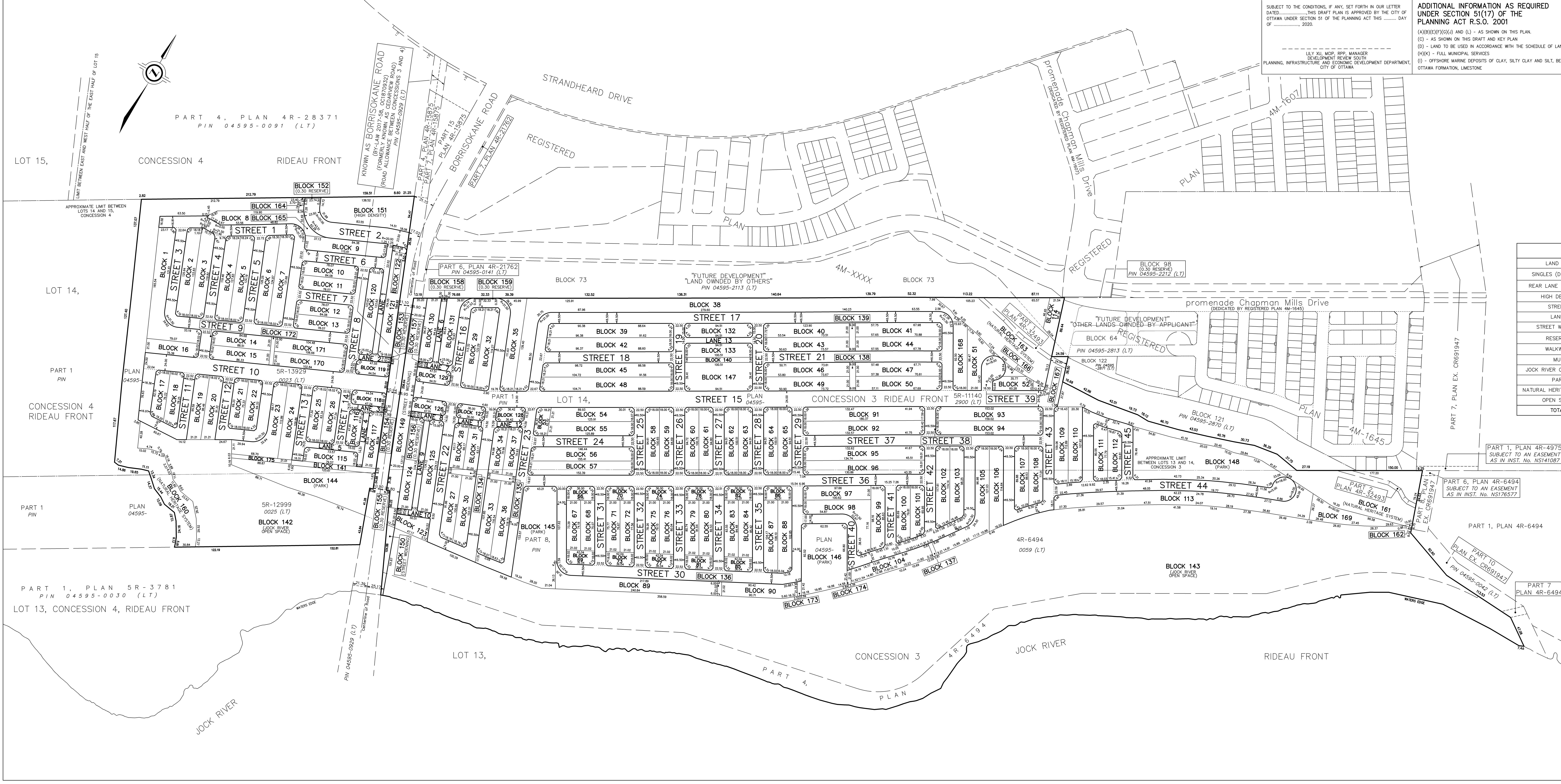
(A)(B)(E)(F)(G)(J) AND (L) - AS SHOWN ON THIS PLAN.
(C) - AS SHOWN ON THIS DRAFT AND KEY PLAN
(D) - LAND TO BE USED IN ACCORDANCE WITH THE SCHEDULE OF LAND USE.
(H)(K) - FULL MUNICIPAL SERVICES
(I) - OFFSHORE MARINE DEPOSITS OF CLAY, SILTY CLAY AND SILT, BEDROCK OTTAWA FORMATION, LIMESTONE



DRAFT PLAN OF SUBDIVISION
PART OF LOTS 13 AND 14 CONCESSION 3 (RIDEAU FRONT)
PART OF LOTS 13 AND 14 CONCESSION 4 (RIDEAU FRONT)
GEOGRAPHIC TOWNSHIP OF NEPEAN
CITY OF OTTAWA
SCALE 1:2000
© COPYRIGHT 2020
J.D. BARNES LIMITED
DISTANCES AND/OR COORDINATES SHOWN ON THIS PLAN ARE IN METRES AND CAN BE CONVERTED TO FEET BY DIVIDING BY 0.3048.

SCHEDULE OF LAND USE

LAND USE	BLOCK(S)	AREA (ha.)
SINGLES (DETACHED)	1 TO 114, BOTH INCLUSIVE, AND 170 AND 171	28.0±
REAR LANE TOWNHOME	115 TO 133, BOTH INCLUSIVE	3.2±
HIGH DENSITY	151	0.6±
STREETS	STREET 1 TO 45, BOTH INCLUSIVE	18.6±
LANES	LANES 1 TO 13, BOTH INCLUSIVE	0.86±
STREET WIDENING	149 AND 150	0.7±
RESERVES	152 TO 159, BOTH INCLUSIVE	0.003±
WALKWAYS	134 TO 139, BOTH INCLUSIVE, AND 172, 173 AND 174	0.22±
MUP	140, 141 AND 175	0.23±
JOCK RIVER OPEN SPACE	142 AND 143	23.8±
PARK	144 TO 148, BOTH INCLUSIVE	3.9±
NATURAL HERITAGE SYSTEM	160 TO 163, BOTH INCLUSIVE	5.1±
OPEN SPACE	164 TO 169, BOTH INCLUSIVE	0.55±
TOTAL:		85.8±



OWNER'S CERTIFICATE
BARRHAVEN CONSERVANCY DEVELOPMENT CORPORATION, BEING THE REGISTERED OWNER OF THE SUBJECT LANDS HEREBY AUTHORIZES J. D. BARNES LIMITED TO PREPARE AND SUBMIT THIS DRAFT PLAN OF SUBDIVISION FOR APPROVAL.

DATE:
FRANK CARO
PRESIDENT
I HAVE THE AUTHORITY TO BIND THE CORPORATION

SURVEYOR'S CERTIFICATE
I HEREBY CERTIFY THAT THE BOUNDARIES OF THE LAND TO BE SUBDIVIDED ARE CORRECTLY SHOWN.

DATE:
C.M. FOX
ONTARIO LAND SURVEYOR

BOUNDARY INFORMATION IS COMPILED FROM AVAILABLE RECORDS AND HAS NOT BEEN VERIFIED BY ACTUAL FIELD MEASUREMENTS.

J.D. BARNES LIMITED
SURVEYING MAPPING GIS
LAND INFORMATION SPECIALISTS
2450 DON REDD DRIVE, SUITE 304, OTTAWA, ON K1B 1E1
T: (613) 731-7244 F: (613) 731-8955 www.jdbarnes.com

DRAWN BY: NS CHECKED BY: XX
REFERENCE NO.: 18-10-127-00-DP
FILE: 0-18-10-127-00-DP-Drawn-Plan-Overall-18-10-127-00-DP-Part-4p DATE: 8/4/2020