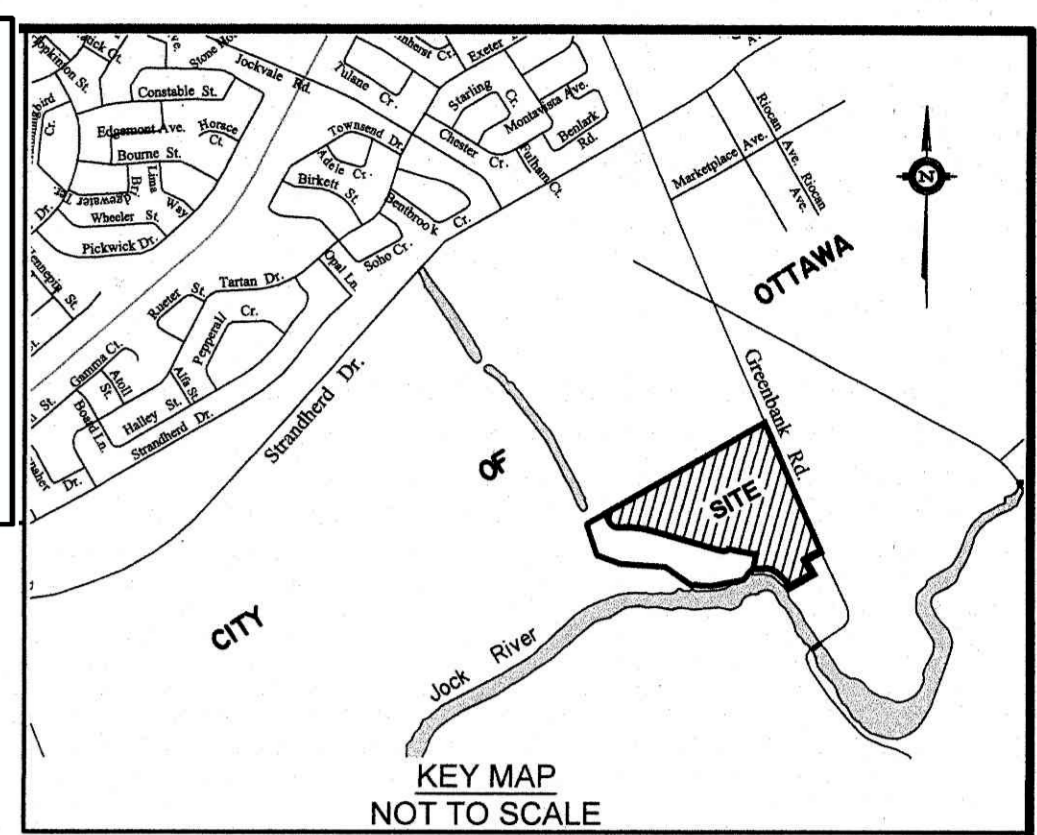


SUBJECT TO THE CONDITIONS, IF ANY, SET FORTH IN OUR LETTER DATED May 22, 2020, THIS DRAFT PLAN IS APPROVED BY THE CITY OF OTTAWA UNDER SECTION 51 OF THE PLANNING ACT THIS 12 DAY OF JUNE, 2020.

[Signature]

LILY XU, M.C.P., R.P.P. MANAGER
DEVELOPMENT REVIEW SOUTH
PLANNING, INFRASTRUCTURE AND ECONOMIC
DEVELOPMENT DEPARTMENT, CITY OF OTTAWA



**DRAFT PLAN OF SUBDIVISION OF
PART OF LOT 13
CONCESSION 3 (RIDEAU FRONT)
Geographic Township of Nepean
CITY OF OTTAWA**
Prepared by Annis, O'Sullivan, Vollebek Ltd.

Scale 1:1000
0 10 20 30 40 Metres

Metric
DISTANCES SHOWN ON THIS PLAN ARE IN METRES AND CAN BE CONVERTED TO FEET BY DIVIDING BY 0.3048

SURVEYOR'S CERTIFICATE

I CERTIFY THAT:
The boundaries of the lands to be subdivided and their relationship to adjoining lands have been accurately and correctly shown.

March 10/20
Date
[Signature]
T. Hartwick
ONTARIO LAND SURVEYOR

OWNER'S CERTIFICATE

This is to certify that we are the owners of the lands to be subdivided and that this plan was prepared in accordance with our instructions.

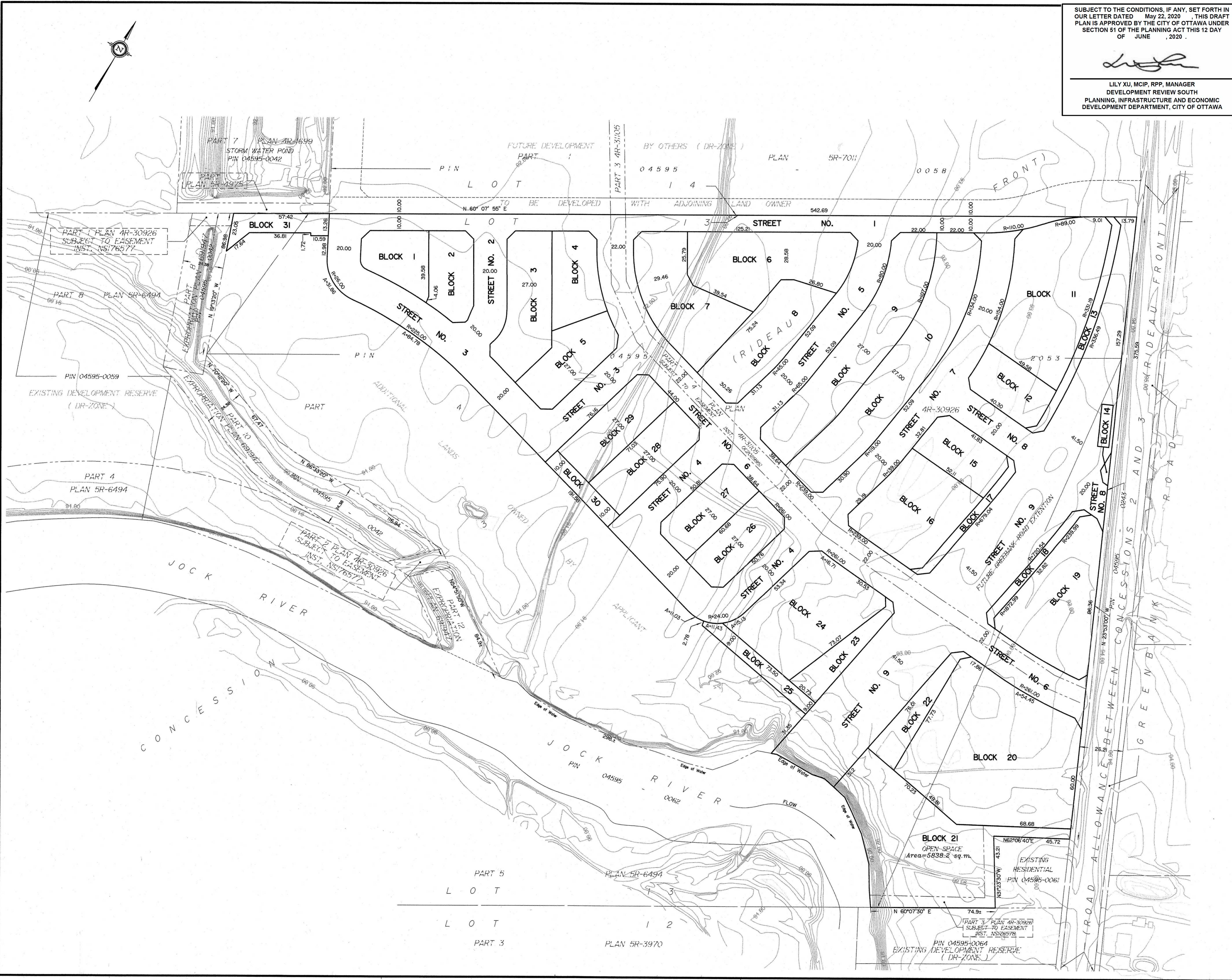
March 10/20
Date
[Signature]
Jim Burghout
CLARIDGE HOMES (SOUTH NEPEAN) INC.
I have the authority to bind the corporation.

ADDITIONAL INFORMATION REQUIRED UNDER SECTION 51-17 OF THE PLANNING ACT

- (a) see plan
- (b) see plan
- (c) see plan
- (d) multi-family residential housing, park land, open space
- (e) see plan
- (f) see plan
- (g) see plan
- (h) City of Ottawa
- (i) see soils report
- (j) see plan
- (k) sanitary, storm sewers, municipal water, bell, hydro, cable and gas to be available
- (l) see plan

| REVISION SCHEDULE | | | |
|-------------------|---------------------------|---------------|----|
| NO. | REVISION | DATE | BY |
| F2 D8 | ADDED GREENBANK AS STREET | OCT. 28, 2019 | N |
| F2 D7 | ADDED BLOCKS 27 AND 28 | JUNE 20, 2019 | N |
| F2 D6 | REMOVED BLKS 26 AND 27 | APR. 29, 2019 | N |
| F2 D5 | REVISIONS | MAR. 20, 2019 | DG |
| F2 D4 | REVISIONS | JAN. 16, 2019 | N |
| F2 D3 | REVISIONS | NOV. 13, 2017 | DG |
| F2 D2 | REVISIONS | SEPT. 8, 2017 | N |
| F2 D1 | REVISION | SEPT. 5, 2017 | N |
| 1 | PLAN PREPARED | 2017 | ?? |

ANNIS, O'SULLIVAN, VOLLEBEK LTD.
14 Concourse Gate, Suite 500
Nepean, Ont. K2E 7S8
Phone: (613) 727-0850 / Fax: (613) 727-1079
Email: Nepean@annisovl.com
Ontario Land Surveyors
Use No. 16396-15, Claridge PILLIS CS RF NP DPS F2 D8



\\C:\ADVERT\16396-15\Drawings\16396-15 Claridge PILLIS CS RF NP DPS F2 D8.dwg