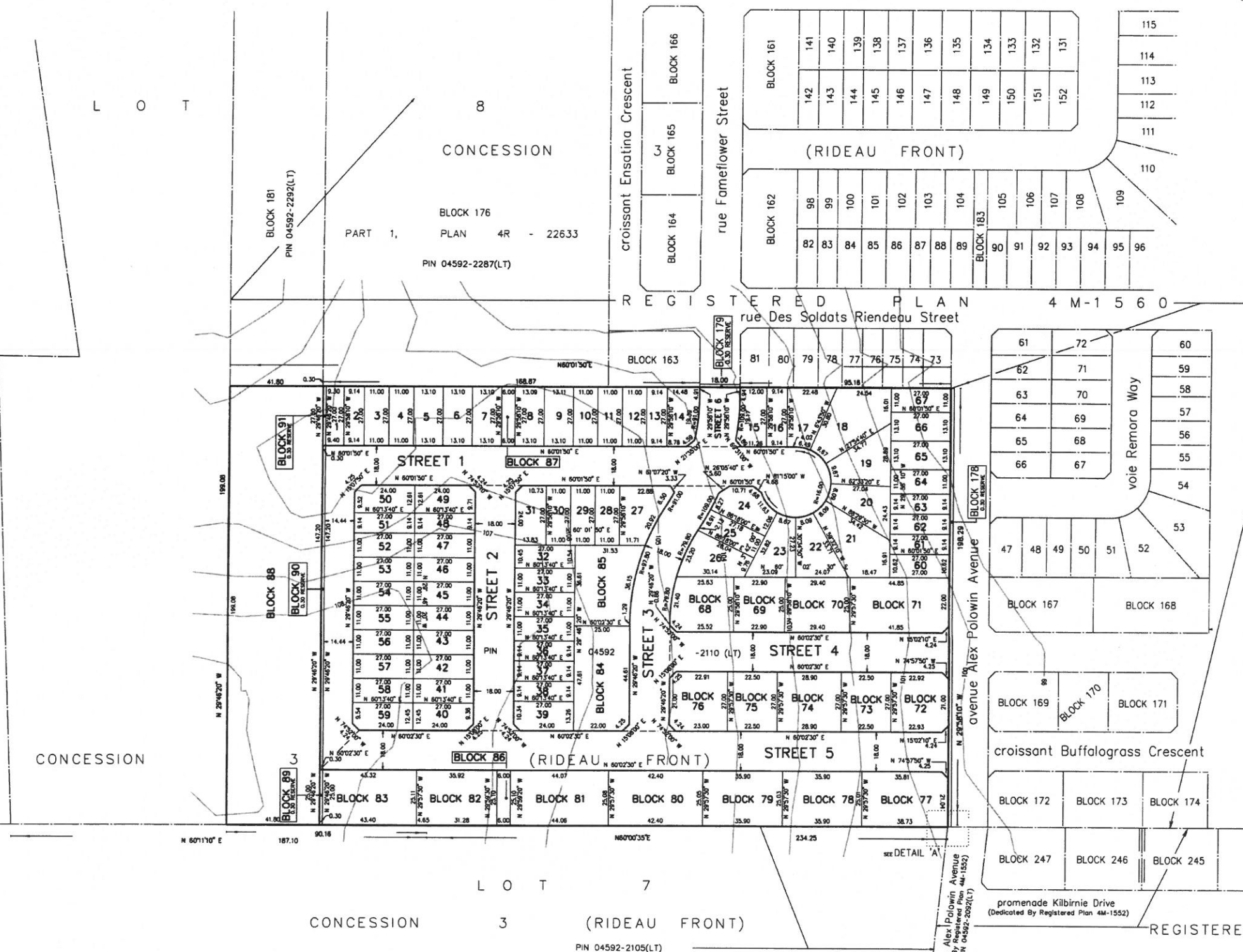
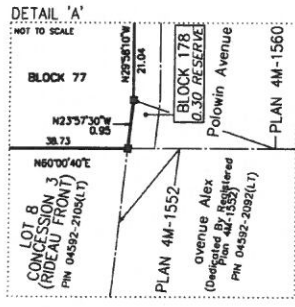
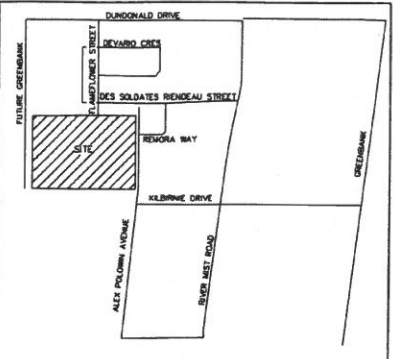


PART 2, PLAN 5R-1 3403
PART 1, PLAN 4R-743
PIN 04592-0037(LT)



SUBJECT TO THE CONDITIONS, IF ANY, SET FORTH IN OUR LETTER DATED..... THIS DRAFT PLAN IS APPROVED BY THE CITY OF OTTAWA UNDER SECTION 51 OF THE PLANNING ACT THIS DAY OF, 2019.

LILY XU, M.C.P., R.P.P. (A) MANAGER
DEVELOPMENT REVIEW SOUTH
PLANNING, INFRASTRUCTURE AND ECONOMIC DEVELOPMENT DEPARTMENT,
CITY OF OTTAWA



ADDITIONAL INFORMATION REQUIRED UNDER SECTION 51 OF THE PLANNING ACT.

ADDITIONAL INFORMATION As required under section 51(17) of the Planning Act R.S.O. 2001

(a)(b)(c)(d)(e)(f) and (i) - As shown on this Plan.
(c) - As shown on this Draft and Key Plan
(d) - Land to be used in accordance with the Schedule of Land Use.
(h)(k) - Full Municipal Services
(i) - Offshore Marine Deposits of clay, silty clay and silt, Bedrock Ottawa Formation, limestone

DRAFT PLAN OF SUBDIVISION OF
PART OF LOT 8
CONCESSION 3 (RIDEAU FRONT)
GEOGRAPHIC TOWNSHIP OF NEPEAN
NOW IN THE
CITY OF OTTAWA

J.D. BARNES LIMITED
© COPYRIGHT 2019

SCALE 1 : 1000

METRIC DISTANCES AND/OR COORDINATES SHOWN ON THIS PLAN ARE IN METRES AND CAN BE CONVERTED TO FEET BY DIVIDING BY 0.3048.

Schedule of Land Use		
Land Use	Blocks/Lots	AREA (ha)
Singles	Lots 1 to 67	2.23
Regular Townhomes	Blocks 68 to 71, 77 to 85	1.22
Back to Back Townhomes	Blocks 72 to 76	0.34
Walkway	Blocks 86 and 87	0.03
0.30m Reserve	Blocks 89 to 91	0.01
Streets	Street 1 to 6, BLOCK 88	2.63
Total		6.46

OWNER'S CERTIFICATE
MATTAMY (HALF MOON BAY 5) LIMITED, BEING THE REGISTERED OWNERS OF THE SUBJECT LANDS HEREBY AUTHORIZES J. D. BARNES LIMITED TO PREPARE AND SUBMIT THIS DRAFT PLAN OF SUBDIVISION FOR APPROVAL

Dec 5, 2019
DATE

KEVIN MURPHY
DIRECTOR, LAND DEVELOPMENT
(I HAVE THE AUTHORITY TO BIND THE CORPORATION)
MATTAMY (HALF MOON BAY 5) LIMITED

SURVEYOR'S CERTIFICATE
I HEREBY CERTIFY THAT THE BOUNDARIES OF THE LAND TO BE SUBDIVIDED ARE CORRECTLY SHOWN.

NOVEMBER 27th, 2019
DATE

C.W. FOX
ONTARIO LAND SURVEYOR

J.D. BARNES LIMITED SURVEYING MAPPING GIS
LAND INFORMATION SPECIALISTS
340 DON REED DRIVE, SUITE 204, OTTAWA, ON K1H 1E1
T: (613) 731-7244 F: (613) 731-8955 www.jdbarnes.com

DRAWN BY: EC CHECKED BY: CF REFERENCE NO.: 18-10-127-00
FILE: G:\18-10-127\00\Drawing\Drawl Plan\18-10-127-00\18-10-127-00.dwg
PLOTTED: 12/3/2019