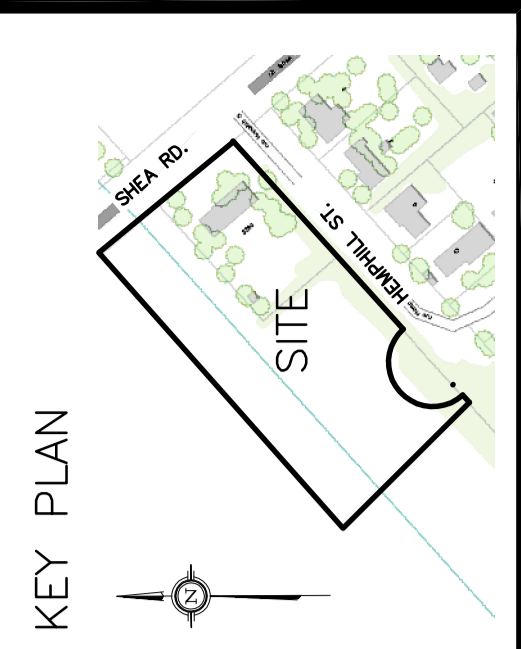


DRAWING LEGEND	
CB	CATCH BASIN
MH	MANHOLE
CB/MH	CATCH BASIN/MANHOLE
WS/WM	WATER SERVICE / WATERMAIN
SS	SANITARY SEWER
ST	STORM SEWER
FI	FIRE HYDRANT
UP	UTILITY POLE
---	EXISTING GRADE ELEVATION
+	PROPOSED GRADE ELEVATION
0.5%	EXISTING SLOPE OF GRADE
0.5%	SLOPE OF GRADE
---	SWALE/DITCH (CENTERLINE)
---	TOP OF SLOPE
---	BOTTOM OF SLOPE
---	PROPERTY LINE
F.F.L.	FIRST FLOOR ELEVATION
T.O.F.	TOP OF FOUNDATION ELEVATION
B.F.L.	BASMENT FLOOR ELEVATION
U.S.F.	UNDERSIDE OF FOOTING ELEVATION



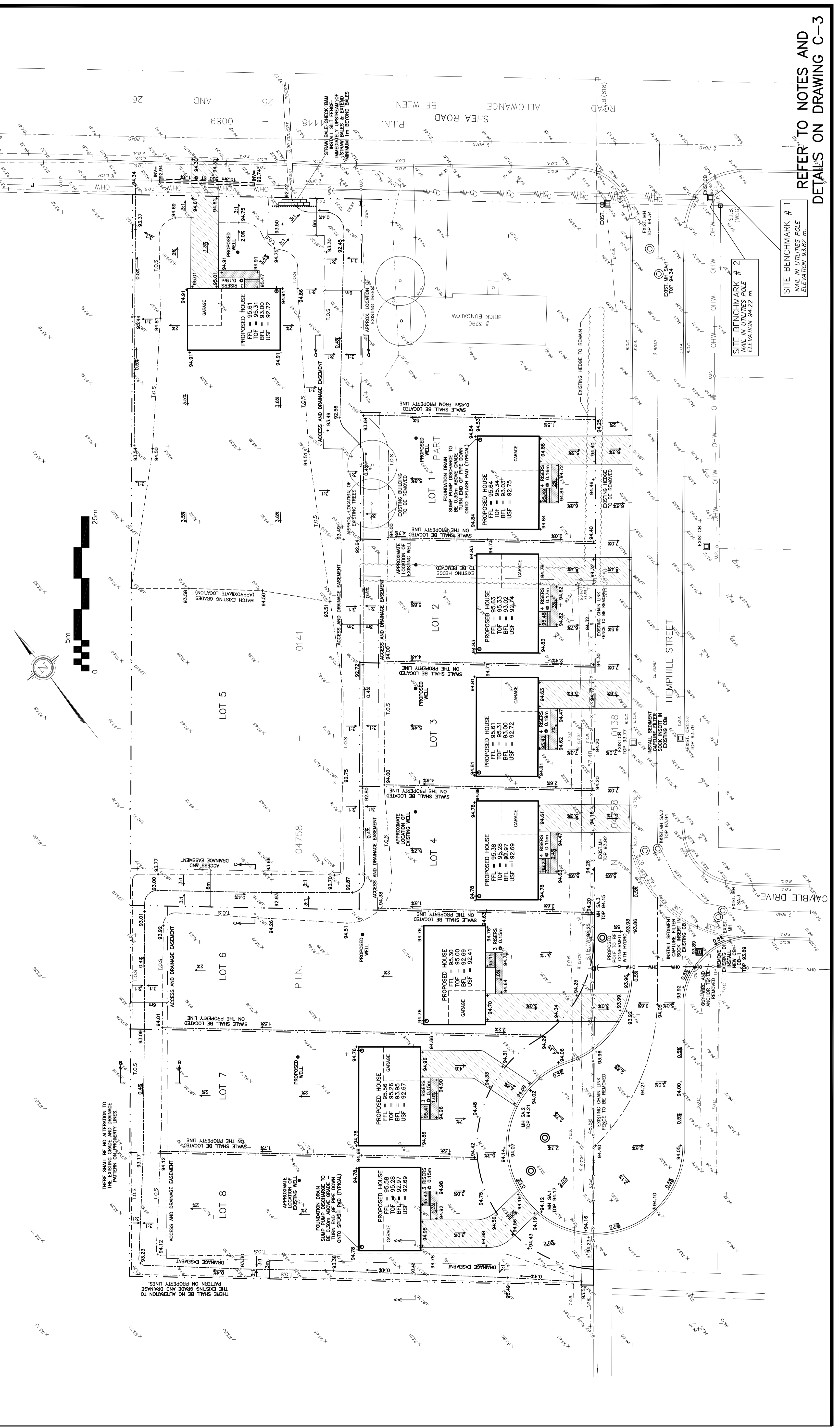
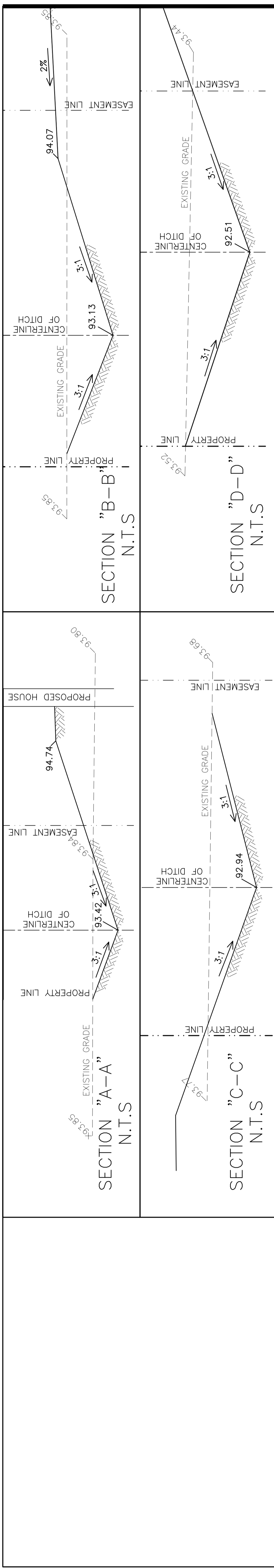
No.	Date	REVISION
2	AUG 29-18	ISSUED FOR APPROVAL
1	DEC 15-17	ISSUED FOR CLIENT REVIEW

**D. B. GRAY ENGINEERING INC.**  
 700 Long Point Circle  
 Ottawa, Ontario K1T 4E9  
 Tel: 613-425-8044  
 dgray@engr.com

**PROPOSED 8-LOT RESIDENTIAL DEVELOPMENT**  
 HEMPHILL STREET/SHEA ROAD  
 RICHMOND, ONTARIO

**GRADING PLAN AND EROSION & SEDIMENT CONTROL PLAN**

Engineer's Seal  
  
 Drawing No. **C-2** of **3**  
 NOT VALID UNLESS SIGNED & DATED



REFER TO NOTES AND DETAILS ON DRAWING C-3

SITE BENCHMARK # 1  
 NAIL IN UTILITIES POLE  
 ELEVATION 93.82 m.

SITE BENCHMARK # 2  
 NAIL IN UTILITIES POLE  
 ELEVATION 94.22 m.