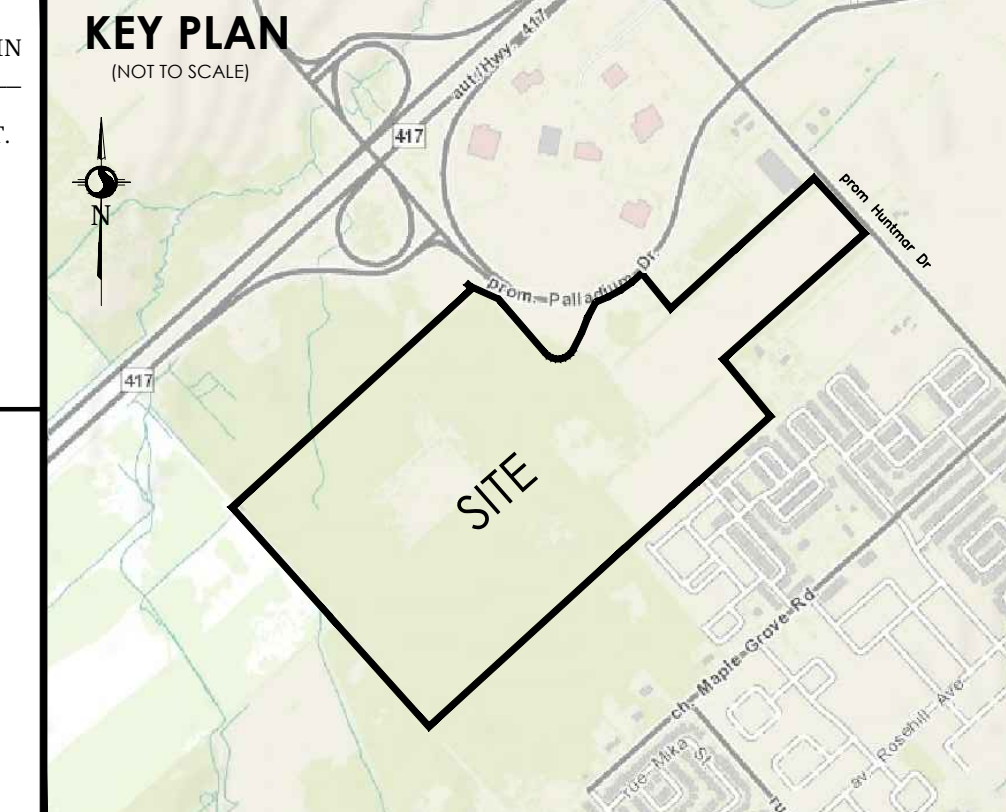


SUBJECT TO THE CONDITIONS, IF ANY, SET FORTH IN OUR LETTER DATED \_\_\_\_\_ 2010.  
 THIS DRAFT PLAN IS APPROVED BY THE CITY OF OTTAWA UNDER SECTION 51 OF THE PLANNING ACT, THIS \_\_\_\_\_ DAY OF \_\_\_\_\_ 2010.

DERRICK MOORE  
 MANAGER, DEVELOPMENT BRANCH - WEST  
 PLANNING, INFRASTRUCTURE AND ECONOMIC  
 DEVELOPMENT DEPARTMENT, CITY OF OTTAWA



**DRAFT PLAN OF SUBDIVISION OF  
 PART OF LOTS 1 AND 2  
 CONCESSION 1**  
 (TOWNSHIPS OF HUNTLEY)  
 CITY OF OTTAWA

Scale: 1:1250  
 METRIC CONVERSION  
 DISTANCES AND COORDINATES SHOWN ON THIS PLAN ARE IN METRES  
 AND CAN BE CONVERTED TO FEET BY DIVIDING BY 0.3048

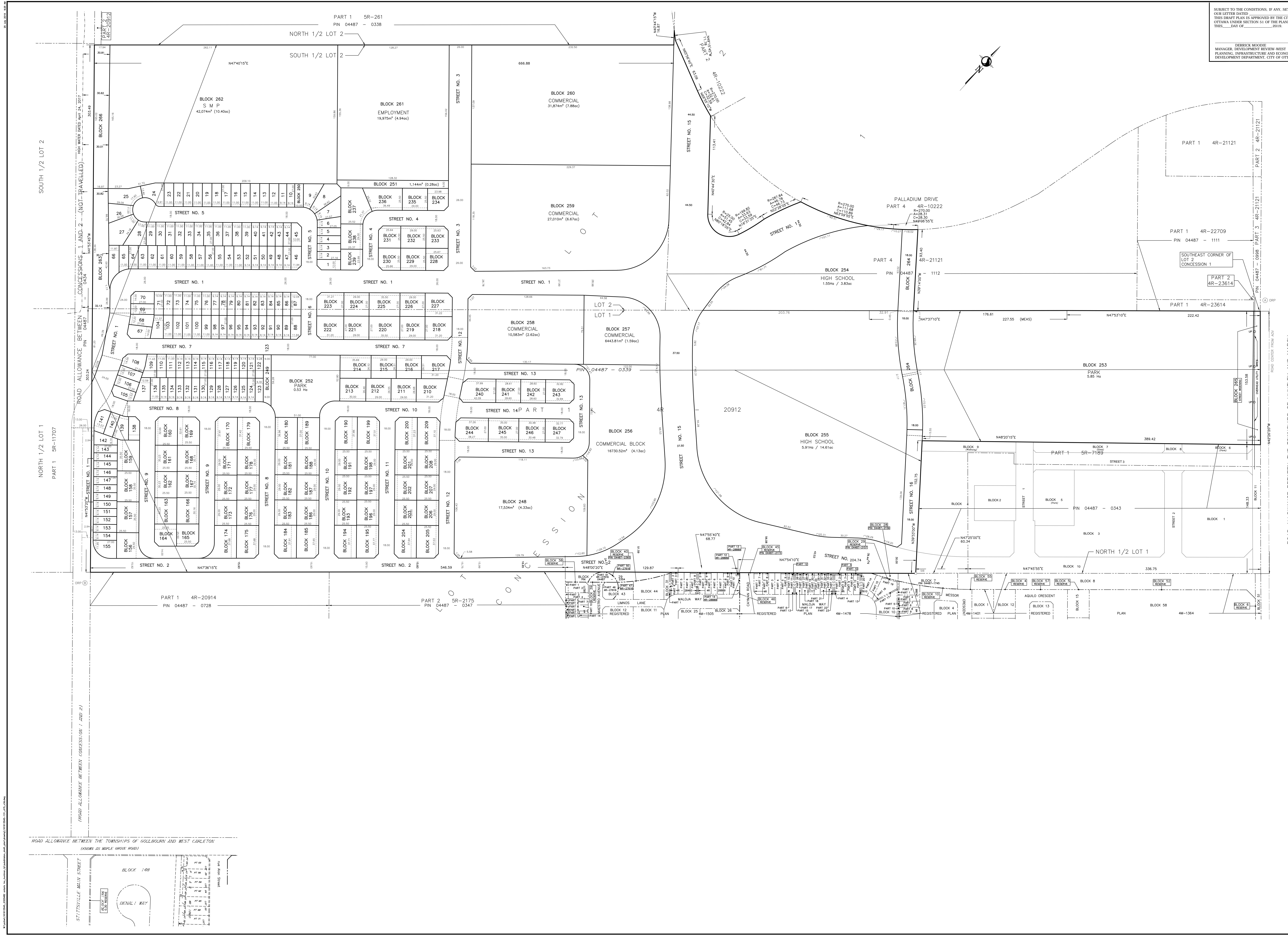
LOT/BLOCK	USE	UNITS	AREA (M <sup>2</sup> /AC)
1 TO 155	RESIDENTIAL SINGLES	155	4,807.11/3.2
156 TO 229	RESIDENTIAL TOWNS	302	4,807.16/3.2
230 TO 247	RES.	64	9.71/1.25
248	CONDO	143	1.75/4.33
249 TO 251	SPORCH/CHILDREN		0.17/0.46
252 AND 253	PARK	2	4.36/10.74
254 AND 255	SCHOOL	2	2,467.18/6.4
256 TO 260	COMMERCIAL	5	9.36/22.97
261	EMPLOYMENT		2,002.43/5.4
262	OPEN SPACE		4,217.40/10.4
263 AND 264	OPEN SPACE		3,657.15/9.5
264	PROPOSED STREET		0.41/1.05
265	STREET PROPOSED		0.18/0.45
STREETS			13,527.33/45
TOTAL		714	58,127.44/150

**INFORMATION REQUIRED UNDER SECTION 51 (7) OF THE PLANNING ACT R.S.O. 1990**  
 A. SEE PLAN  
 B. SEE PLAN  
 C. SEE PLAN  
 D. SEE PROPOSED LAND USE SCHEDULE (ANNEX)  
 E. SEE PLAN  
 F. SEE PLAN  
 G. SEE PLAN  
 H. CITY WATER AVAILABLE: WELL  
 I. SEE SOIL REPORT  
 J. SEE TOPOGRAPHICAL INFORMATION  
 K. ALL CITY SERVICES AVAILABLE  
 L. NO ENCUMBRANCES REGISTERED ON TITLE

**SURVEYOR'S CERTIFICATE**  
 I HEREBY CERTIFY THAT THE BOUNDARIES OF THE SUBJECT LANDS AND THEIR RELATIONSHIP TO ADJOINING LANDS HAVE BEEN ACCURATELY AND CORRECTLY SHOWN.

DATE \_\_\_\_\_  
 BRAUN J. WEBSTER  
 CHIROD LAND SURVEYOR

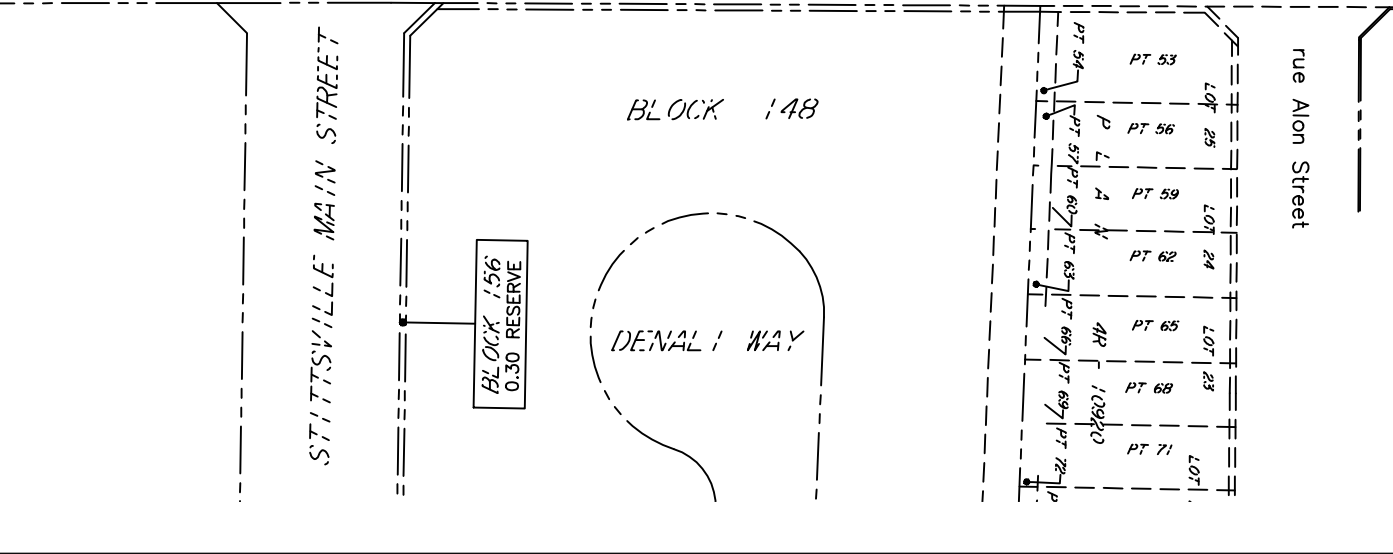
**Stantec Geomatics Ltd.**  
 CANADA LAND SURVEYORS  
 ONTARIO LAND SURVEYORS  
 131 CLIVE AVENUE, SUITE 400  
 OTTAWA, ONTARIO, K2C 3G4  
 TEL: (416) 224-4200 FAX: (416) 224-2399  
 WWW.STANTEC.COM



SOUTH 1/2 LOT 2

NORTH 1/2 LOT 1  
 PART 1 5R-11707

ROAD ALLOWANCE BETWEEN THE TOWNSHIPS OF GOLDBURN AND WEST CARLETON  
 (KNOWN AS MAPLE GROVE ROAD)



ROAD ALLOWANCE BETWEEN THE TOWNSHIPS OF HUNTLEY AND MARCH  
 (KNOWN AS HUNTER ROAD)

DATE \_\_\_\_\_

DRAWN: CJC CHECKED: JF BY: JF RECD: NVA PROJECT NO: 14141545101