

PART 2, PLAN 5R-1 3403
 PART 1, PLAN 4R-743
 PIN 04592-0037(LT)

L O T

CONCESSION

CONCESSION

L O T

CONCESSION 3 (RIDEAU FRONT)

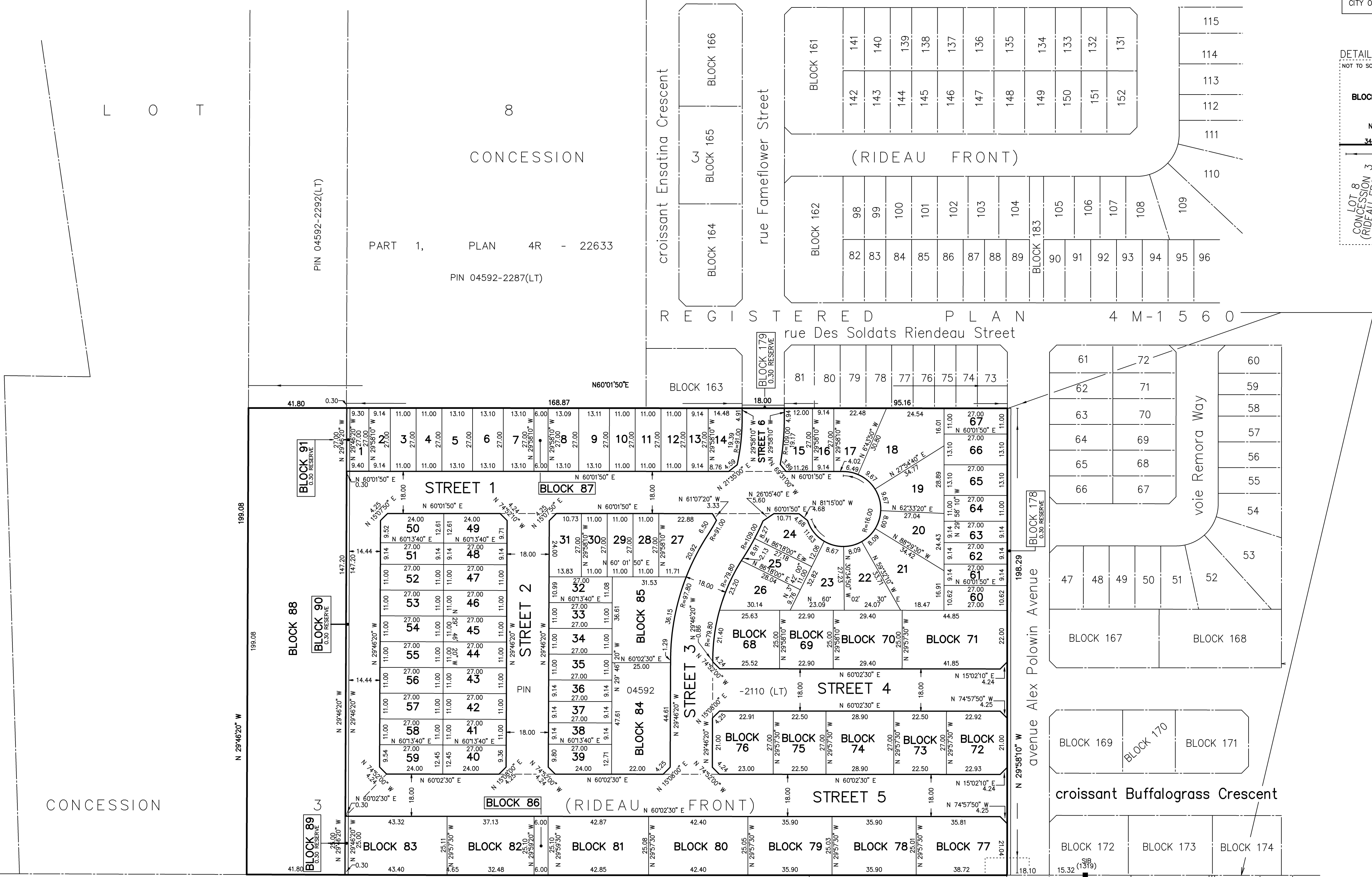
PIN 04592-2105(LT)
 PART 3, PLAN 4R-28416

PART 1, PLAN 4R - 22633

PIN 04592-2287(LT)

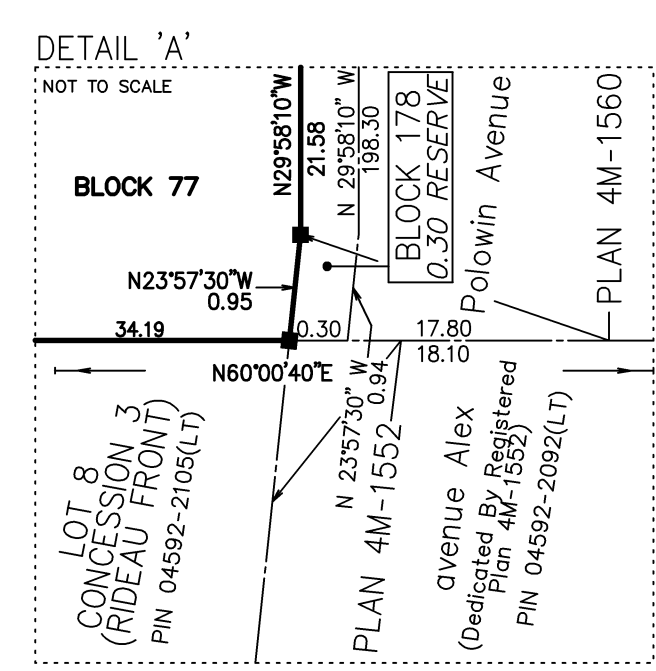
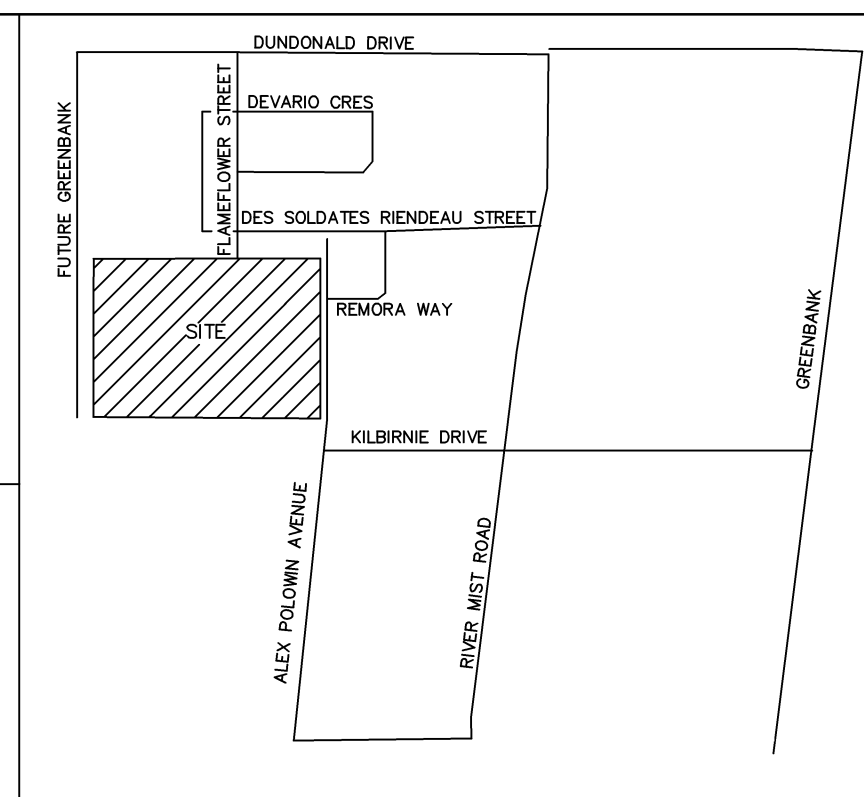
REGISTERED PLAN 4M-1560

REGISTERED PLAN 4M-1552



SUBJECT TO THE CONDITIONS, IF ANY SET FORTH IN OUR LETTER DATED _____ 2017
 THIS DRAFT PLAN IS APPROVED BY THE CITY OF OTTAWA UNDER SECTION 51 OF THE PLANNING ACT. THIS _____ DAY OF _____ 2018

FELICE PETTI, P. ENG. MANAGER
 DEVELOPMENT REVIEW SUBURBAN SERVICES
 PLANNING AND GROWTH MANAGEMENT DEPARTMENT
 CITY OF OTTAWA



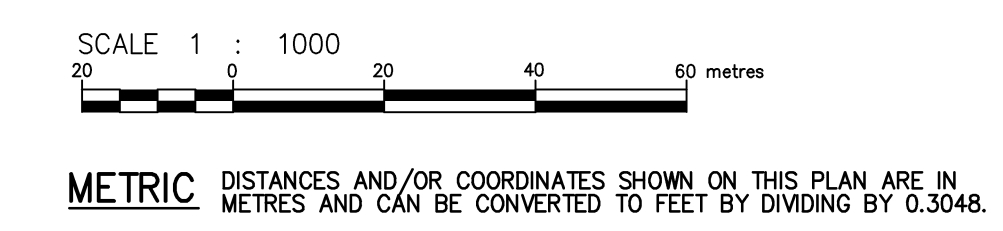
ADDITIONAL INFORMATION REQUIRED UNDER SECTION 51 OF THE PLANNING ACT.

ADDITIONAL INFORMATION As required under section 51(17) of the Planning Act R.S.O. 2001

- (a)(b)(e)(f)(g)(j) and (l) - As shown on this Plan.
- (c) - As shown on this Draft and Key Plan
- (d) - Land to be used in accordance with the Schedule of Land Use.
- (h)(k) - Full Municipal Services
- (i) - Offshore Marine Deposits of clay, silty clay and silt. Bedrock Ottawa Formation, limestone

DRAFT PLAN OF SUBDIVISION OF
**PART OF LOT 8
 CONCESSION 3 (RIDEAU FRONT)**
 GEOGRAPHIC TOWNSHIP OF NEPEAN
 NOW IN THE
CITY OF OTTAWA

J.D. BARNES LIMITED
 © COPYRIGHT 2018



Schedule of Land Use		
Land Use	Blocks/Lots	AREA (ha)
Singles	Lots 1 to 67	2.23
Regular Townhomes	Blocks 68 to 71, 77 to 85	1.22
Back to Back Townhomes	Blocks 72 to 76	0.34
Walkway	Blocks 86 and 87	0.03
0.30m Reserve	Blocks 89 to 91	0.01
Streets	Street 1 to 6, BLOCK 88	2.63
Total		6.46

SURVEYOR'S CERTIFICATE

I CERTIFY THAT:
 1. THIS SURVEY AND PLAN ARE CORRECT AND IN ACCORDANCE WITH THE SURVEYS ACT, THE SURVEYORS ACT AND THE LAND TITLES ACT AND THE REGULATIONS MADE UNDER THEM.
 2. THE SURVEY WAS COMPLETED ON _____ 201 .

DATE _____ X
 ONTARIO LAND SURVEYOR

DRAWN BY: EC	CHECKED BY: CF	REFERENCE NO.: 18-10-127-00
FILE: G:\18-10-127\00\Drawing\Draft Plan\18-10-127-00\DRP\Plan(24/18).dgn		
PLOTTED: 1/24/2019		